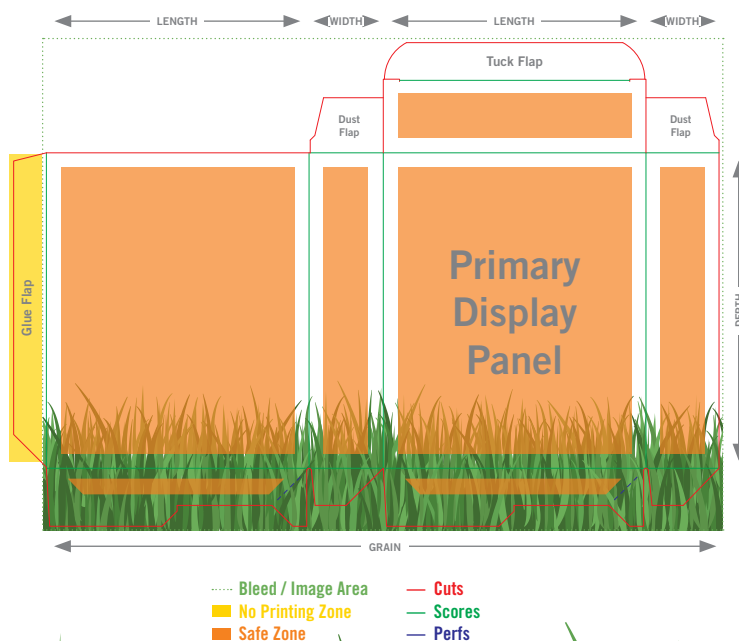




Before submitting your folding carton artwork, please check the following:

- Use scaled dieline files provided by Franklin Printing. (PDFs accepted but native Illustrator or InDesign files are preferred)
- Submit native files including all fonts and links.
- Dieline included on separate layer.
- Art layers neatly organized. Do not combine all art into a single layer.
- Delete hidden elements and layers that should not print.
- Files un-flattened.
- Photograph and image resolutions 300 pixels per inch (minimum).
- Photographs in CMYK color mode.
- Blacks 100% K, not Registration Black.
- Printing 4 color process? No spot/PMS colors in file.
- Printing a spot/PMS ink? Spot swatch set up in file and applied to graphic elements.
- If using foil, set it up as a spot/PMS swatch. Label the swatch FOIL and include the foil number in the swatch name.
- Bleeds extend 1/8 inch (.125") past all cuts (exception glue tab).
- No printing on glue tabs except for bleed.
- Wrap panel edge art 1/32 inch (.03125") over the score line.
- Important design content placed away from the edges, seams, and score lines.
- Upload your files to Franklin Printing through our website: franklinprinting.com/file



If you require our assistance with any artwork preparation, please specify the details and we will gladly furnish a quote for these services.

The Proofing Process: First you will receive a PDF proof. Once that is approved, you will receive an Epson color proof with dieline and an assembled inkjet proof.

