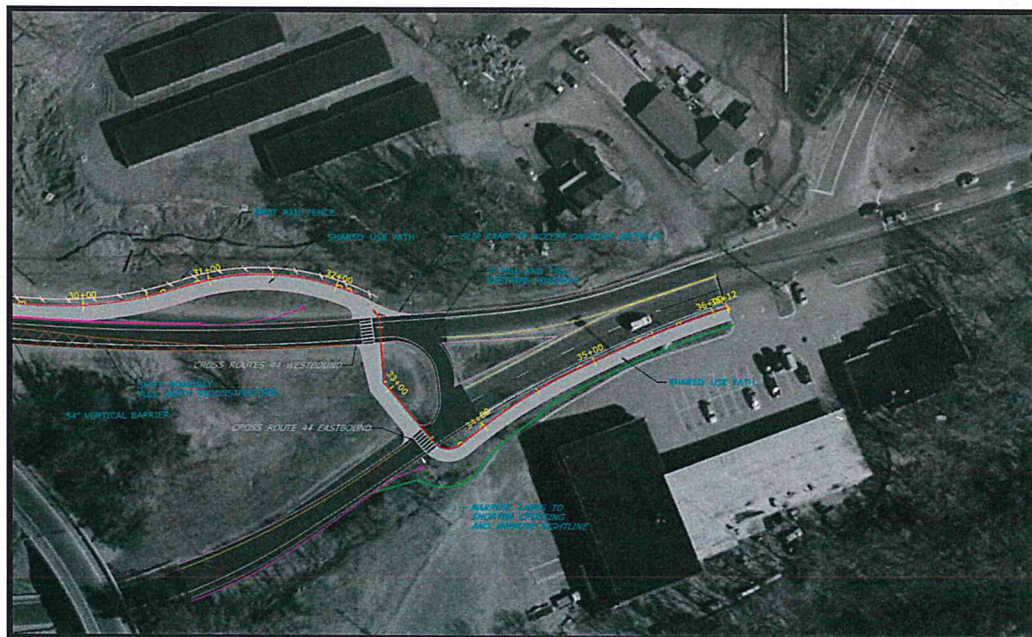
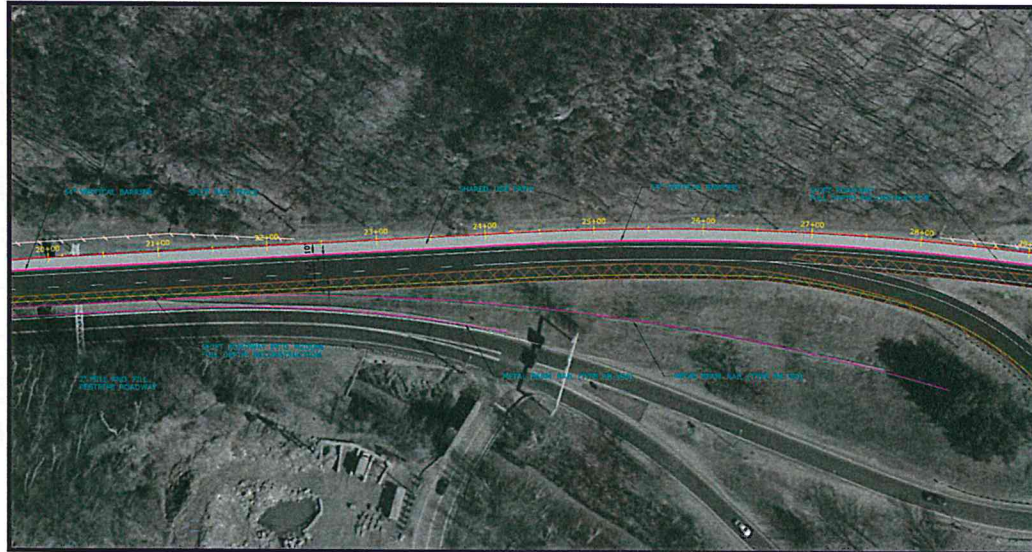


Preferred Alignment - Shared Use Path Connection



FEASIBILITY STUDY

SHARED USE PATH CONNECTING THE HOP RIVER TRAIL TO QUARRY ROAD
State Project 12-98
TOWN OF BOLTON



**CONNECTICUT
DEPARTMENT OF TRANSPORTATION
REPRESENTATIVES:**

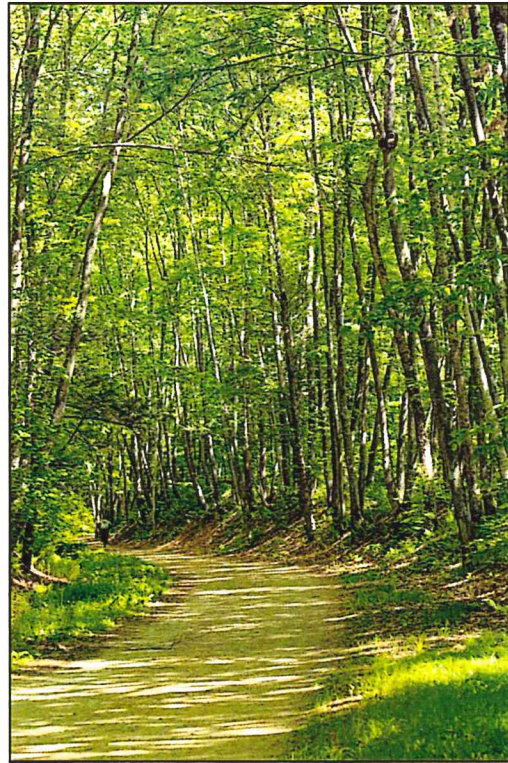
Division of Highway Design

William Britnell, P.E.
Principal Engineer
Phone No. (860) 594-3274
William.Britnell@ct.gov

Matthew Vail, P.E.
Project Manager
Phone No. (860) 594-3342
Matthew.Vail@ct.gov

Marissa Washburn, P.E.
Project Engineer
Phone No. (860) 594-3470
Marissa.Washburn@ct.gov



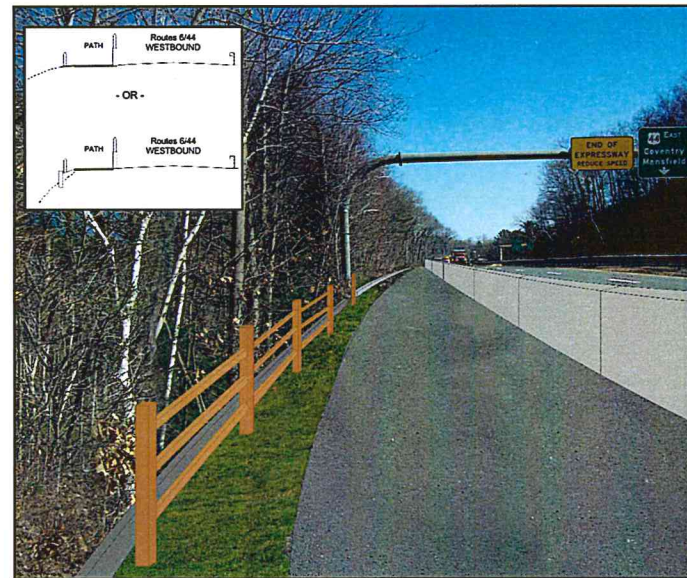


Study History

In February 2014, a public informational meeting was held for Project 12-96, the extension of the Charter Oak Greenway Shared Use Path in the Towns of Manchester and Bolton. At the meeting, Bolton Town officials and members of the public requested that the Department of Transportation extend the shared-use path from its planned terminus at the Hop River State Park Trail at Bolton Notch State Park to Quarry Road, a town road located approximately 0.5 miles to the east. During a subsequent meeting between the Department, Town of Bolton, and the Capitol Region Council of Governments (CRCOG), it was agreed that the Department would study possible linkages between the Hop River Trail State Park and a shopping plaza located opposite Quarry Road. This meeting will present the Department's findings.

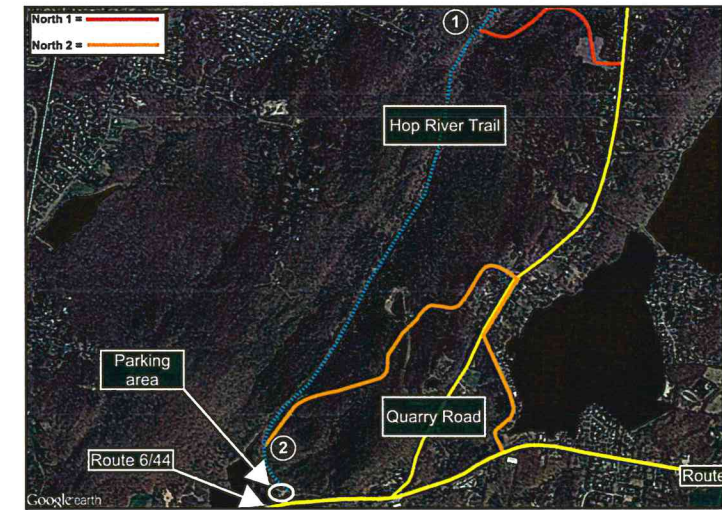
Purpose and Need

The purpose of this path connection is to provide access to the East Coast Greenway (Hop River State Park Trail & Charter Oak Greenway) from Route 44 and the communities to the east of Bolton Notch Pond. The connection is needed because pedestrian and bicyclists are prohibited from using the roadway, an overlapping section of Routes 6/44, to reach the trail network because the high speeds, vehicular volumes, and steep roadside characteristics which make the roadway unsafe for such users.

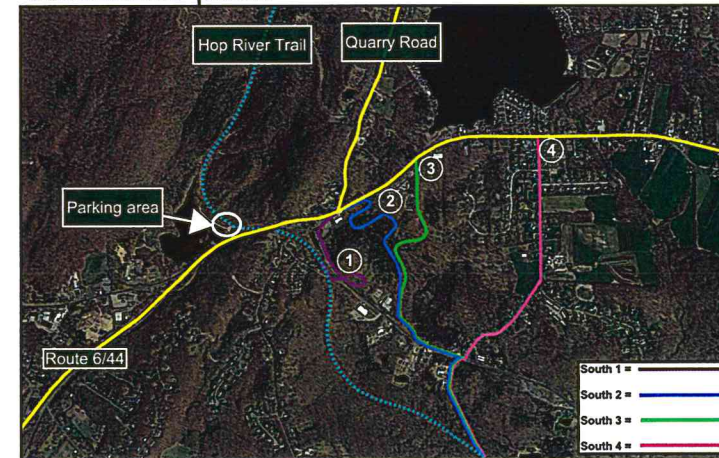


Feasibility Study

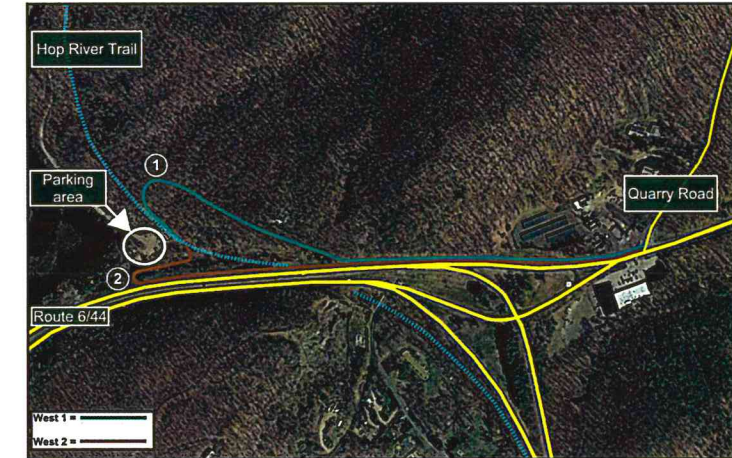
This study investigated alignment options that traveled to the north, south and west of Route 6 and Route 44, as well as along the roadway itself. Approximately 0.5 miles separates the Hop River State Park Trail parking area and Quarry Road. The major design considerations for the connection path include environmental impacts, historical & cultural impacts, utility impacts, the total length of connector path, cost, right-of-way impacts, and compliance with the American with Disabilities Act (ADA). In an effort to reduce impacts, the Department initially investigated alignments that utilized existing trails in the design of the connector path.



Northern Route Alternatives



Southern Route Alternatives



Western Route Alternatives

Many challenges and impacts were present for all of the off-road alternatives. The preferred route is depicted below. It follows Routes 6/44 and uses a concrete barrier to separate path users from high speed vehicular traffic. The path crosses Route 44 and ends at the Post Office plaza located across from Quarry Road.

Preferred Alignment - Shared Use Path Connecting the Hop River Trail to Quarry Road

