

January 20, 2023

BOLTON
222 BOLTON CENTER RD
BOLTON, CT 06043
Attention Municipal Official for BOLTON,

At Eversource, we are dedicated to delivering reliable energy and providing excellent customer service. Our comprehensive vegetation management program includes year-round tree work to protect the electric system. Trees are the number one cause of outages during storms in Connecticut.

Statewide, our data shows a continued need for regular tree maintenance in the face of drought, tree disease and stronger storms. Each year, we complete tree work along 4,000 miles of overhead electric distribution lines around the state. Included in this mailing is a map of the town with the roads with planned work highlighted. Planned tree work in your town is estimated to begin in February.

Julian Picciano, an Eversource Arborist, will be the point of contact for all aspects of the work in your community. Julian Picciano can be reached at 860-306-6071.

The enclosed Tree Reliability Scorecard provides a visual representation of vegetation management **in your community**.

It includes:

- An overview of our 2023 tree work plan
 - The number of blocked roads caused by trees during storms
 - The number of customers who refused our proposed tree work
- The impact of tree reliability on customers

We believe these enhanced communications make it easier than ever to understand how thoughtful tree work strengthens the grid. In the coming weeks, our expert Arborists plan to work closely with community leaders and residents to discuss plans and seek permission before tree work begins.

Please contact me at 860-665-6103 for any questions regarding Eversource's vegetation management program.

Sincerely,

Sean Redding, Eversource Manager of Vegetation Management

Enc: Town Trimming Map, Town Scorecard

BOLTON



DISTRIBUTION TREE RELIABILITY



TOTAL MILES SCHEDULED

19.4

TOWN TOTAL

51.0

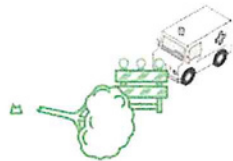


BACKBONE MILES SCHEDULED

4.8

TOWN TOTAL

7.4



BLOCKED ROADS (2018-2022)

13



CUSTOMER REFUSALS & LIGHT TRIMS
(2018-2022)

54

TREE RELIABILITY 2022

CUSTOMERS SERVED

2,268

PERCENT TREE-RELATED OUTAGES

48%

OUTAGES

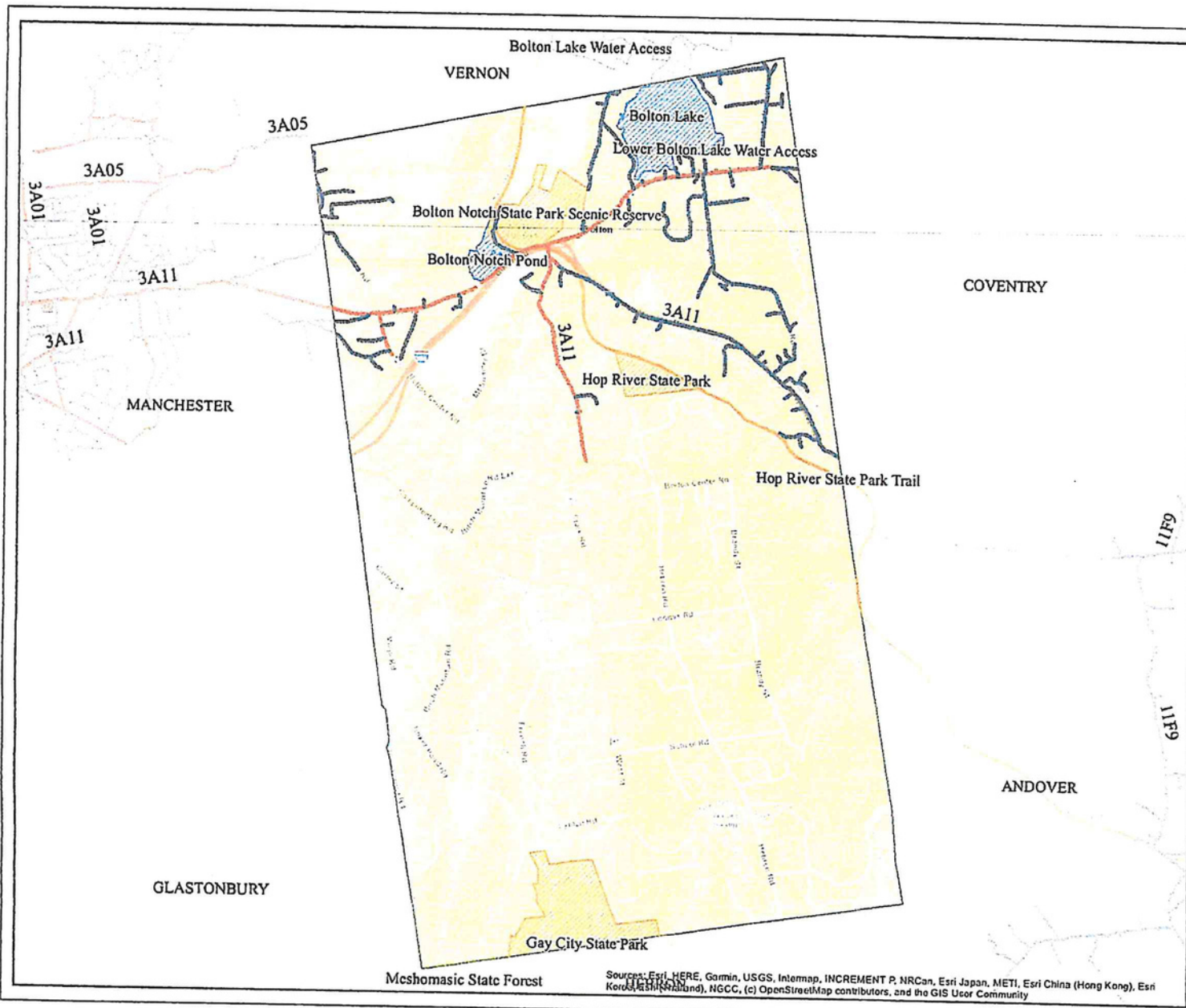
78

CUSTOMERS IMPACTED

1,430

MINUTES CUSTOMERS IMPACTED

219,616

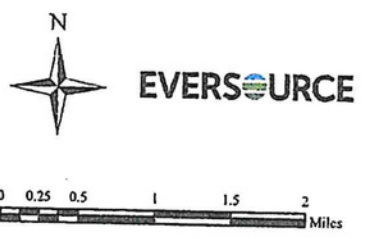


BOLTON

- OH Primary 2023 Trimming**
- Backbone Maintenance Trimming
 - Scheduled Maintenance Trimming
 - State Forest
 - State Park or Preserve
 - Wildlife Area or Sanctuary
 - Other DEP Property
 - Stations
 - Town Boundary

Town Mileage Summary

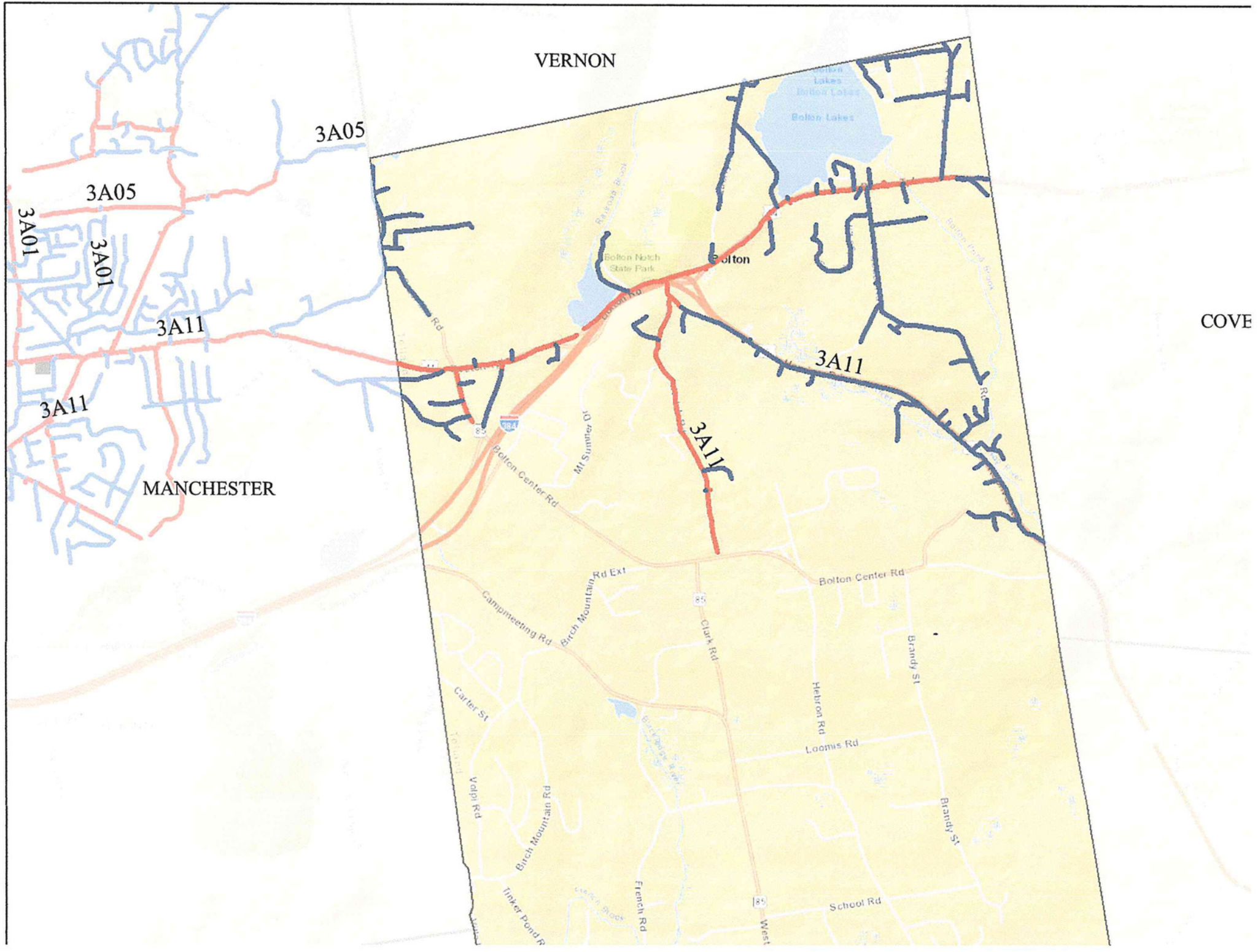
BB METT:	4.80
SMT:	14.58
Total:	19.38



PROPRIETARY INFORMATION: The material contained on the Overhead Distribution Circuit Map shall be considered proprietary to Eversource (ES), and Users (which shall be defined as any person or entity who has received the Map through sale, purchase, exchange gift, or otherwise) shall keep it in confidence and shall not furnish or disclose it to any third party without the prior written permission of Eversource.

Date: 6/20/2022

Sources: Esri, HERE, Garmin, USGS, Intermap, INCREMENT P, NRCan, Esri Japan, METI, Esri China (Hong Kong), Esri Korea, Swire, and NGCC, (c) OpenStreetMap contributors, and the GIS User Community



VERNON

3A05

3A05

3A01

3A01

3A11

3A11

MANCHESTER

Bolton Notch State Park

Bolton

3A11

3A12

COVE

Bolton Center Rd

Mt Summer Ct

Campmeeting Rd
Birch Mountain Rd Ext

Clark Rd

Bolton Center Rd

Carter St

Volpi Rd

Birch Mountain Rd

Tinker Pond Rd

French Rd

Loomis Rd

Hebron Rd

Brandy St

Brandy St

School Rd

West