

Bentley Happenings

January 2025



Why a Library?

"A library is a gateway to wisdom and knowledge."

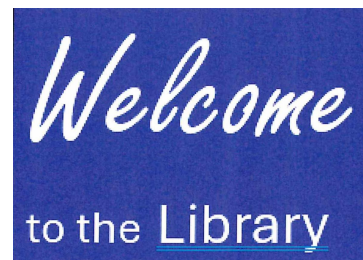
-- Lailah Gifty Akita

[Visit our Website](#)



Martin Luther King Day Monday, January 20th

The Dr. Martin Luther King, Jr. holiday will mark the 30th anniversary as a National Day of Service.



Bentley Memorial Library
206 Bolton Center Road
Bolton, CT
860-646-7349 bentley@biblio.org

Hours

Mon. - Thurs., 10 a.m. - 8 p.m.
Sat., 10:00 a.m. - 3:00 p.m.

Holiday Hours

The library will be open on December 31st, New Year's Eve Day from 10:00 to 4:00 and will be closed on Wednesday, January 1st - New Year's Day. On Monday, January 20th, the library will be closed in recognition of Martin Luther King Day.

Museum Pass Update

TixKeeper, our current online museum pass provider, ceased operations at the end of December. Bentley is committed to providing patrons with an easily accessible way to sign out our passes and plans to have a new system up and running shortly. In the meantime, patrons are encouraged to contact the library after January 1st if they

**MUSEUM
PASSES**
AT THE LIBRARY



wish to sign out a pass. Until the new online system is operational, patrons will need to stop by Bentley to physically pick up a pass. There will be no cash deposit required to reserve your pass. Bentley has also added a new pass, the Springfield Basketball Hall of Fame to our collection of museum passes. If you have any questions, stop by the library or give us a call at 860-646-7349.

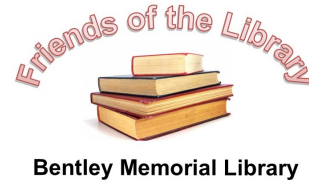
The Trees Around Me

Created by Dorothy L. Hall

Dorothy Hall, professional artist and Bolton resident, has created a collection centered on trees around us. The art is painted in Gouache, watercolor and acrylics. The trees are also drawn with pastels and ink, and some works are crafted from cut paper.

Friends of the Library

Our January Book Sale will feature **cookbooks**. You will find these books on a Book Cart in the library, with prices ranging from 50 cents to \$3.00. On our kiosk in the front lobby, we'll be continuing the sale of "Odds and Ends" books on a wide variety of topics including Gardening, Crafts, Health and Fitness, Self-Help, Animals, hardcover and paperback fiction and more. The Friends of the Library are also selling reusable book bags for \$3.00 each. All proceeds from the book and bag sales are much appreciated and help support the library throughout the year.



To enhance your experience while visiting the library, do stop by our new Coffee Bar located near the Reference Desk to enjoy a warm cup of coffee.

If you have any suggestions for the Friends of BML or have a few hours to volunteer, please join us at the library for our next meeting on Wednesday, January 8, 2025 at 6:30.

Thank You! 5th Annual Blanket Drive The Giving Tree

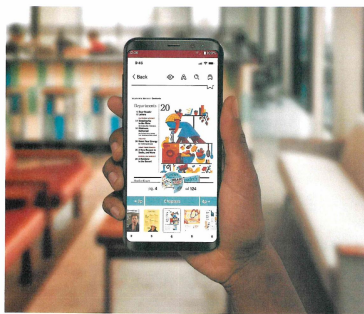
Thank you to everyone who contributed to the Giving Tree sponsored by Bolton Social Services.



Thank you to all who donated 14 blankets to the Cornerstone Shelter in Rockville to support the Blanket Drive.

Read Magazines with Libby

Magazines can be borrowed through your regular Libby account. A patron only needs to open their Libby account, select Bentley Memorial Library and browse for magazines. When you see the cover of a magazine you'd like to read, tap the cover and then tap borrow. When you wish to read the magazine tap the shelf icon. Tap the middle of the screen to view a



page, tap the left or right side of the screen to navigate through the magazine.

Magazines are always available to read, but they must be subscriptions that Bentley Memorial Library has subscribed to. These magazines will not count towards your checkout limit. Also, magazines automatically return at the end of the loan period so there are no overdue issues.



Borrow magazines for free from our library!

Libby.
The library reading app

The Libby app is a great way to access magazines. **Please remember that Bentley has print copies of 50 magazine titles and 6 newspapers.**

Connecticut's Countryside Four-town Website



In 2020, Coventry partnered with the towns of Bolton, Mansfield, and Tolland to create a regional economic vitality plan. The towns share a commitment to preserving natural spaces and promoting outdoor activities, fostering vibrant arts communities, and maintaining rich agricultural traditions.

Over the summer of 2024 a four-town website was launched to increase the visibility of our area programs, businesses and environment. Please take a moment to explore this site and see what you might discover!

[Connecticut's Countryside](#)

Tech Assistance for the Winter

Bentley will be providing technical support for our patrons throughout the Winter. If you need assistance with email, Hoopla, Libby, Facebook, your online account, or other tech related issues – we're here to help. To schedule your in-library session, please call Bentley at 860-646-7349 or email us at [**bmlprograms@biblio.org**](mailto:bmlprograms@biblio.org) to select your date and time slot. Advance registration is essential to ensure that we are prepared to offer you the most useful assistance possible.

Why Preregister?

For many of our events you are asked to register. We do this for very practical reasons. Seating, handouts, prizes and refreshments all need to be ordered. Even more importantly, we need to know if it is viable to continue with a given event. Most of our programs have a significant cost and cannot be canceled at the last minute.

What does this really mean? We want you here to enjoy the programs we schedule. Please register to let us know you are coming so we can make all the preparations necessary to maximize your enjoyment. If you can no longer attend, please let us know.

Upcoming Programs!

Register online, by phone at 860-646-7349, or by email at [**bmlprograms@biblio.org**](mailto:bmlprograms@biblio.org).



Storytime at the Library Wednesday, January 8th, 15th & 22nd from 11:45-12:15

Join us for Storytime in January! Come and enjoy stories and a simple craft. Feel free to bring your own snack or lunch. Registration is not required.



Bulletin Board designed by Amber Mosely

Calling All Teens! Learn about Korea & build your own Lotus Lantern Saturday, January 18th at 12:30 - a teen only event -

Come to Bentley and explore what it's like to be involved with a study abroad program. As you learn about Korea you will also have the chance to build your own lotus lantern. There are only 8 slots available, so register early!



[Preregister here](#)

JANUARY IS RADON AWARENESS MONTH!
LEARN ABOUT RADON
AND RADON TESTING



This FREE event is open to anyone interested in learning about Radon and Radon Testing.
This program raises awareness about what radon is, how it enters a home, health effects, radon testing, and how values fluctuate over time and area with the weather. Limited radon home test kits will be available at this event.
WHERE: Bentley Memorial Library
206 Bolton Center Rd.
Bolton, CT
DATE & TIME: JAN 28TH
6:30PM-7:30PM
Presented by:
EHHHD

Radon Awareness & Testing Tuesday, January 28th from 6:30 - 7:45 Presented by the Eastern Highlands Health District

Stop by Bentley to learn about radon; what it is, how it enters a home, health effects, radon testing and how values fluctuate with time and weather. Limited radon home testing kits will be available. Registration is not required.

The Fashions of Downton Abbey Wednesday, January 29th at noon Presented by Spirits of Fashion (snow date is February 5th)

Are you a fan of Downton Abbey? Would you love to know more about the fashions of the period? If so, join us for an informative presentation about the lives and fashions of the residents of Downton Abbey. Travel with us through time while we explore the styles of 1912, represented in Season 1 of Downton Abbey, through the 1920s, when major changes occurred both in fashion and in society. Immerse yourself in Downton Abbey, where we will explore all of the changing fashions of this intriguing period.



[Register here](#)



December Program Wrap-up

December was another busy month at the Bentley Memorial Library with varied programs, story times and engaging displays. We wrapped up our two-month initiatives supporting both the **Blanket Drive** and **The Giving Tree** to help area residents. Bentley hosted the Eastern Highlands Health District as they presented information on **blood pressure screening and alcohol abuse**. Toby & Amelia, two **certified therapy dogs**, visited Bentley to share a morning reading with our young patrons. Bentley shared a holiday story as part of the **town-wide holiday celebration**. **The Korean Spirit & Culture Promotion Project** shared an evening exploring Korean culture and constructing lotus lanterns. **the Lido** was a holiday inspiration for our **book discussion group** as community, friendship and dedication were explored. A **holiday pajama storytime** gave our young patrons the opportunity to enjoy holiday stories, crafts and a scavenger hunt.

Future Programs!

Register online, by phone at 860-646-7349, or by email at bmlprograms@biblio.org.

Bolton Public Schools
Students of Bolton High School Art Show
The month of February
Reception, Tuesday February 4th at 6:00

All About Pastels
Presented by Susan Bosworth
Thursday, February 6th at 6:30

3 Book/3 Month Book Discussion Series
'Books That Inspired Movies'

Led by Mark Nystrom

Timeline by Michael Crichton
Wednesday, February 26th at noon

Chocolat by Joanne Harris
Wednesday, March 26th at noon

The 39 Steps by John Buchan
Wednesday, April 30th at noon

Show Your Interest: Main Display Case

Do you have a craft you'd like to share with our community? Have you been to exotic or fascinating places? Do you belong to a group that makes a positive contribution to our area? If you answer **yes** to any of these questions, we'd love to feature you in our Main Display Case! June, July, August, September, November and December are still available for the 2025 calendar year. Contact the library and find a month that works for you.



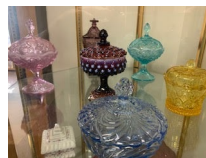
Featured Displays

Main Display Case

During the month of January the Main Display Case will feature information on home schooling.

Summer Sisters' Display Case

The Summer Sisters' Display Case, located in the study room, features a collection of covered candy dishes from the Depression Era. These dishes are richly varied in color, size, shape, and pattern. This display is courtesy of Jim Dwire and John Toomey.



On Display Throughout the library

Adult Fiction: Staff Picks
Adult Nonfiction: True Crime
J & E: Dragons

UPCOMING EVENTS

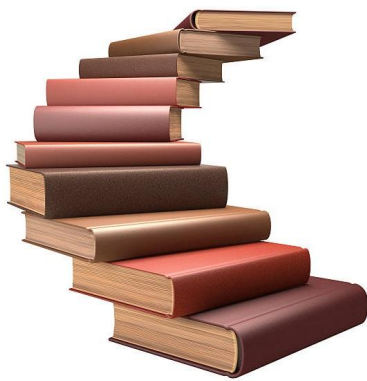
January

Wednesdays
8th, 15th & 22nd
Storytime
11:45 - 12:15

Sat. 18th
Learn about Korea &
Build a Lotus Lantern
-a teen only event-
12:30
Preregistration required

Tue. 28th
EHHD Presents
Radon & Radon
Testing
6:30

Wed. 29th



**Fashions of
Downton Abbey
Presented by Spirits
of Fashion
6:30 - 7:45
Preregistration Required**

Bentley has discount coupons for the Connecticut Science Center. These coupons will take 20% off the admission price for up to four people.



2024-2025 Bolton Calendar Bolton Conservation Commission

The library is selling the annual Conservation Commission calendar for \$10.00 each. All proceeds from sales go directly back to the Conservation Commission.

Hop River Trail Alliance 2025 Calendar

Hop River Trail Alliance calendars for the 2025 year are on sale at Bentley for \$10.00 each. Proceeds will go to support initiatives related to the Hop River Trail.



Knitting and Handcraft Tuesdays Tuesday, 6:30-7:45 p.m.

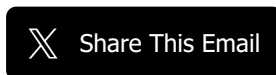
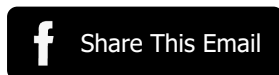
Drop in any Tuesday to join this friendly and experienced group. All skill levels are welcome! Join the group anytime. Registration is not required.

Facebook

Remember to follow us at Bentley Memorial Library.



**Thank you Friends of the Library for providing refreshments
and supplies for our programs throughout the year.**





Try email marketing for free today!