



107 Selden Street
Berlin, CT 06037-1616

January 20, 2024

BOLTON
222 BOLTON CENTER RD
BOLTON, CT 06043
Attention Municipal Official for BOLTON

At Eversource, we are dedicated to delivering reliable energy and providing excellent customer service. Our comprehensive vegetation management program includes year-round tree work to protect the electric system. Trees are the number one cause of outages during storms in Connecticut.

Statewide, our data shows a continued need for regular tree maintenance due to the challenges posed by drought, tree disease and more intense storms. A total of 4,193 roadside distribution miles are planned under the 2024 scheduled maintenance. Eversource's Vegetation Management team inspects and assesses trees along each circuit and performs & prioritizes tree work to maximize reliability for the greatest number of customers. Included in this mailing is a map of the town. The roads scheduled for vegetation assessment are highlighted. Scheduled maintenance tree work in your town is estimated to begin in July.

Julian Picciano, an Eversource Arborist, will be the point of contact for all aspects of the work in your community. Julian Picciano can be reached at 860-306-6071.

The enclosed Tree Reliability Scorecard provides a visual representation of vegetation management in your community.

It includes:

- An overview of our 2024 scheduled maintenance for your town
- The number of blocked roads caused by trees during storms
- The number of customers who refused our proposed tree work
- The impact of tree reliability on customers

We believe these enhanced communications make it easier than ever to understand how thoughtful tree work strengthens the grid. In the coming weeks, our expert Arborists plan to work closely with community leaders and residents to discuss plans before tree work begins.

Please contact me at 860-665-6149 for any questions regarding Eversource's vegetation management program.

Sincerely,

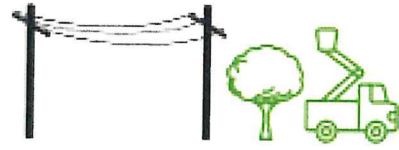
Jenna Turner, Manager of Connecticut Distribution Vegetation Management

Enc: Town Trimming Map, Town Scorecard

BOLTON



DISTRIBUTION TREE RELIABILITY

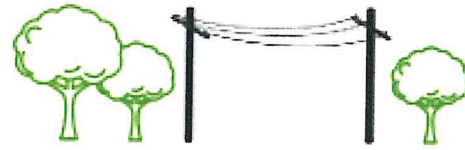


TOTAL MILES ASSESSED

10.2

TOWN TOTAL

51.0

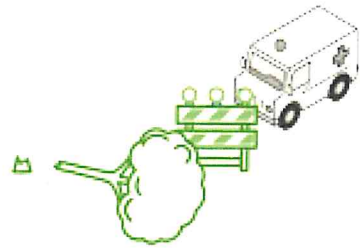


BACKBONE MILES ASSESSED

2.1

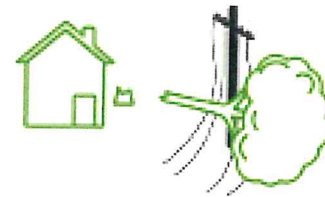
TOWN TOTAL

7.4



BLOCKED ROADS (2019-2023)

25



CUSTOMER REFUSALS & LIGHT TRIMS
(2019-2023)

134

TREE RELIABILITY 2023

CUSTOMERS SERVED

2,310

PERCENT TREE-RELATED OUTAGES

47%

OUTAGES

70

CUSTOMERS IMPACTED

779

MINUTES CUSTOMERS IMPACTED

198,965

BOLTON

OH Primary 2024 Trimming

- Backbone Maintenance Trimming
- Scheduled Maintenance Trimming
- Substations
- Town Boundary

Town Mileage Summary

<u>BB METT:</u>	<u>2.12</u>
<u>SMT:</u>	<u>8.05</u>
<u>Total:</u>	<u>10.17</u>

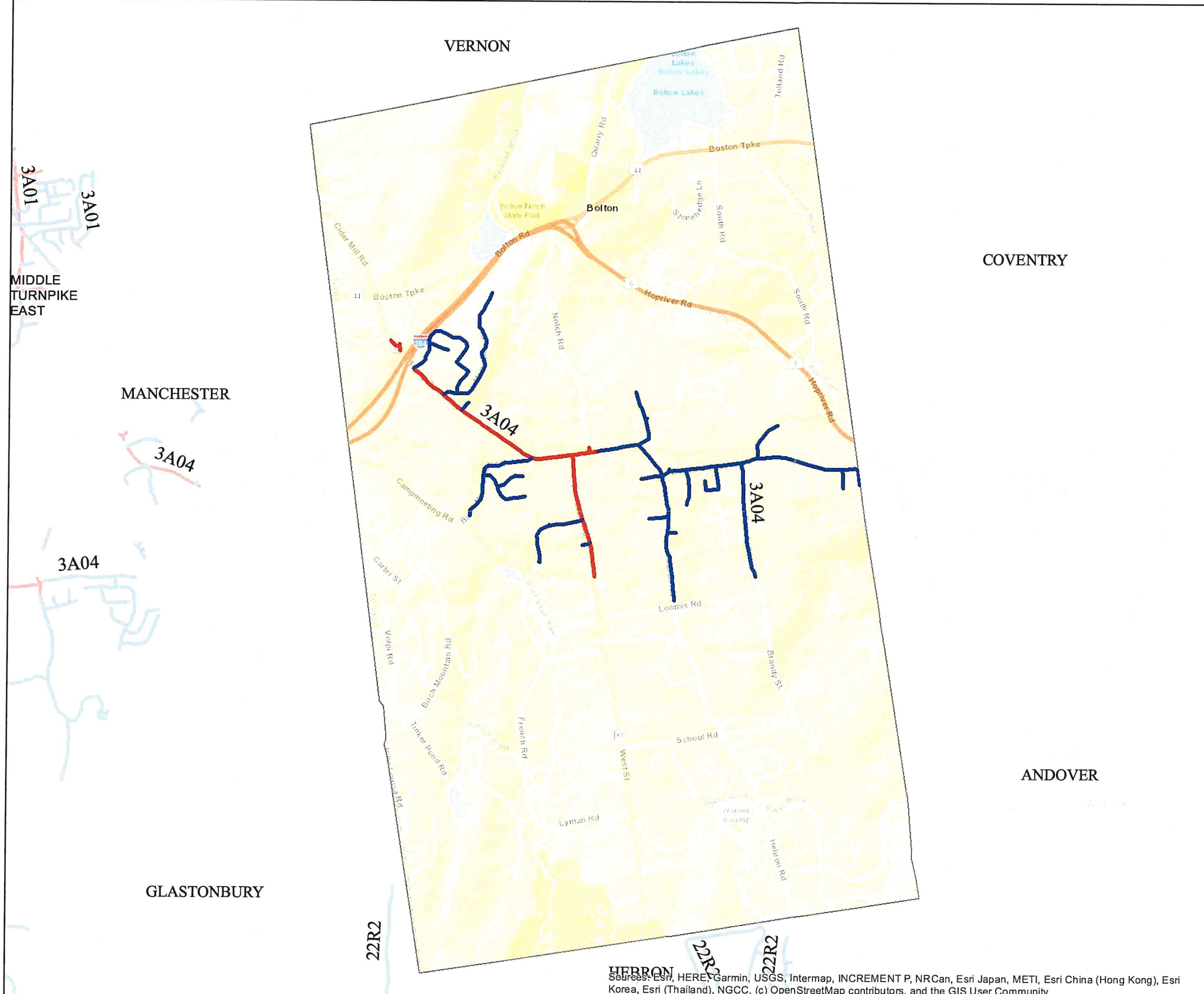


EVERSOURCE



PROPRIETARY INFORMATION: The material contained on the Overhead Distribution Circuit Map shall be considered proprietary to Eversource (ES), and Users (which shall be defined as any person or entity who has received the Map through sale, purchase, exchange gift, or otherwise) shall keep it in confidence and shall not furnish or disclose it to any third party without the prior written permission of Eversource.

Date: 12/6/2023



Sources: Esri, HERE, Garmin, USGS, Intermap, INCREMENT P, NRCan, Esri Japan, METI, Esri China (Hong Kong), Esri Korea, Esri (Thailand), NGCC, (c) OpenStreetMap contributors, and the GIS User Community