



Department of Planning & Community Development (DPCD) May 2025 Newsletter

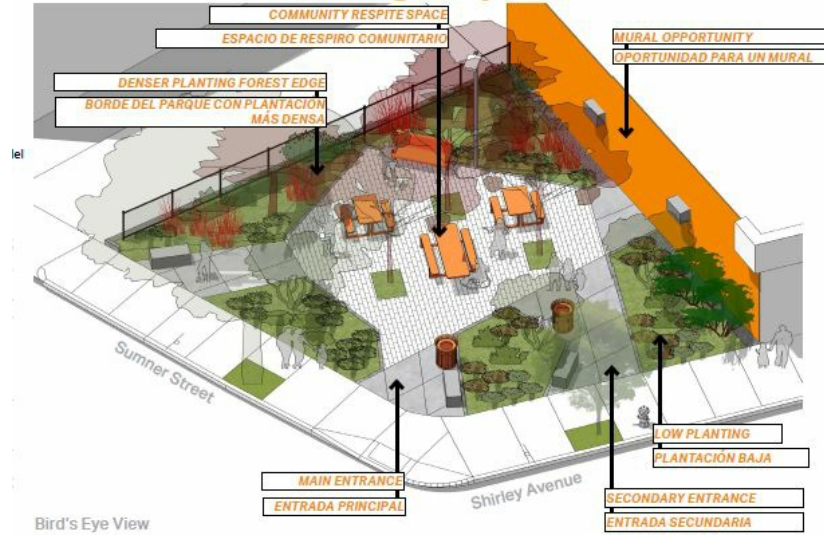


"Road to Revere" Squire Road Event Recap

On May 1st, a student group from the Harvard Graduate School of Design presented their findings of the "Road to Revere", their Squire Road Corridor Study. Among other things, the student projects explored:

- The long-term potential to connect Northgate to the Rumney Marsh
- Improvements to walkability on Squire Road
- The redevelopment potential of Wonderland Marketplace
- Short-term ways to activate spaces such as the former Sozio's furniture site

The studio instructors will be compiling the results into a final report later this summer, and we'll make sure to share it on this newsletter when it becomes available!



Shirley Avenue TDI to hold a Community Projects Update on June 18th

The Planning & Community Development Department in collaboration with TDI and the new Shirley Ave Neighborhood Association, will be hosting a public meeting on Wednesday, June 18th at 6pm.

This public meeting will be located at Women Encouraging Empowerment headquarters located at 50 Walnut Ave, Revere. This meeting will be providing updates about public realm projects that Shirley Ave residents voted on through participatory budgeting. For example, two projects that will be shared based on residents desire for more trees is the Shirley Avenue Tree Planting Master Plan and the Shirley Ave "silva cell" tree planting pilot project. Come learn about the different projects happening in your neighborhood that you voted on!



Flaherty Square Work Set to Begin this Summer

As part of the [Participatory Budgeting](#) work on Shirley Avenue, Flaherty Square--located at the intersection of Beach and Kimball--was identified as an area to incorporate more green space in the neighborhood.

In partnership with Weston and Sampson, DPCD has designed a new open space at this location (pictured). Bids closed in late May on this project, with work anticipated to begin this summer.



Neighborhoods Designs to Improve Wayfinding at the Central Ave Lot

The City of Revere has contracted [Neighborhoods Design Consultants](#) to design the entry ways (pictured) to the Central Avenue Parking Lot on Broadway, Central Avenue, and Sprague Street. Neighborhoods plan is to do artistic “breadcrumbs” to facilitate pedestrian crossings and wayfinding in the parking lot and to integrate and compliment the design with existing wayfinding and color branding proposed for the Broadway District.

If you are interested in providing input on the designs, please use this [survey link](#) to send us comments by June 15th.

The paintings will be designed such that the art can be installed with the assistance of Revere residents during a community paint day: **please save the date of July 19th, if you are interested in participating in this exciting event!** If you have any questions, please don't hesitate to call John Festa at 781-286-8194 x 20318.



Walk, Bike Roll Event Held at Revere High School

On May 18th, City officials and our partners at MAPC held a community event to discuss the initial findings of our Walk, Bike Roll Plan. Revere TV was on hand to [capture some of the fun!](#)

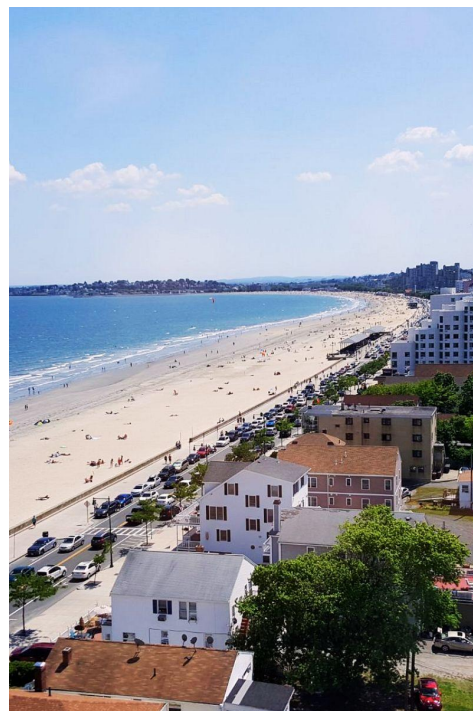
Based off of the feedback provided at the event, the team is now preparing a final draft of the report, scheduled for a summer release. Stay tuned to our newsletter or the [project page](#) for more updates!



Food Truck Ordinance Amendments Appear Before the Council

In May, City officials presented an [updated Food Truck amendment to](#) the City Council for their consideration. The changes would make food trucks an allowed use in the RC2, PDD1, HB and TED Districts, on either public or private property (find those districts on our zoning map [here](#)). Food trucks are prohibited on private property within the current ordinance.

This item will get referred to the Zoning Sub-Committee before it returns to the City Council for a vote at some point this summer.



Emerging Developers Fellowship Opportunity

Are you an emerging developer looking for an opportunity to grow in your field? The

Builder Coalition (TBC)—a Boston-based nonprofit working to increase access and diversity in the commercial real estate industry through training, mentorship, and connection to opportunities—is currently recruiting for the next cohort of our Affordable Housing Developer Fellowship, a six-month, hands-on program designed to support emerging developers who are committed to building inclusive and affordable housing across Massachusetts.

This round of the fellowship is specifically focused on Gateway Cities like Revere. You can find [more details HERE](#) and the [application HERE](#).

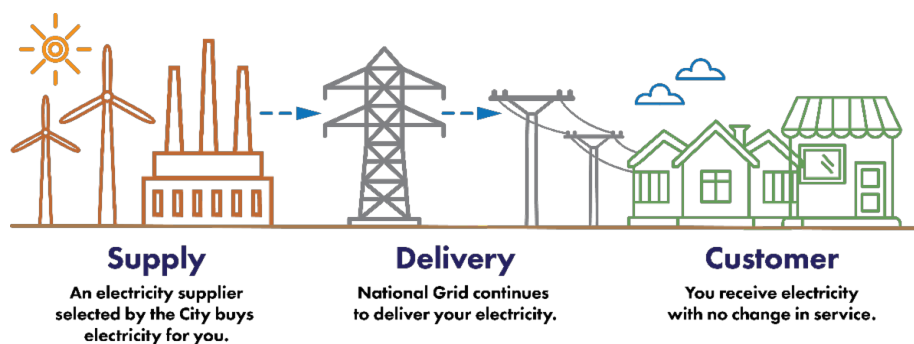


Downpayment Assistance Program: Funds Still Available!!

The City of Revere and the Affordable Housing Trust Fund have reopened the First-Time Homebuyer Downpayment Assistance Program, thanks to an additional \$75,000 earmark secured by Senator Lydia Edwards. Eligible Revere residents can receive funding to purchase a condo or single-family home at an affordable or market price rate. If buying a 2-3 family home, applicants must agree to rent all non-owner-occupied units below market rate per EOHLC guidelines.

This first-come, first-served program requires a completed application with supporting documentation, proof of eligibility, at least two years of Revere residency, and an income at or below 80% of the Area Median Income.

You can find the application on the City website [here](#).



Municipal Aggregation Launches June 1st

Starting in June 2025, Revere Power Choice will provide residents and businesses with 30 months of stable electricity supply prices, helping to protect against market fluctuations and support predictable energy costs. Any resident that is enrolled in the default National

Grid supply will automatically be enrolled into this program. **Enrolled residents will see this change in their July bill from National Grid.**

On April 28th, DPCD and Mass Power Choice reps [spoke to the City Council to answer some questions](#) about the program. You can also find more details about the program on the [Revere Power Choice website](#), including how to contact customer support service that can be found at "[Customer Support](#)" tab. Still have questions? 311, DPCD and the Mayor's Office are also available for local support.



Commercial Leasing Handbook

This guide to commercial lease negotiation is intended to help new entrepreneurs looking for space learn how to navigate a commercial lease, the questions they can ask, and the people they can talk to. It may also help more seasoned business owners who need to relocate.

While it is tailored to Somerville, the message applies to other communities in Massachusetts. It is available in four languages. The work was funded by a Community Compact Cabinet Best Practices Program grant, completed by the City of Somerville with technical assistance from MAPC. Revere is partnering with MAPC on an effort to support small businesses across the region, and this item comes up often in this work.

[The Lease Handbook: Protecting Your Small Business.](#)

If you are interested in receiving monthly communication from the Department of Planning and Community Development, please join our mailing list below.

**Join Our Mailing
List**

City of Revere | 281 Broadway | Revere, MA 02151 US

[Unsubscribe](#) | [Update Profile](#) | [Constant Contact Data Notice](#)



Try email marketing for free today!