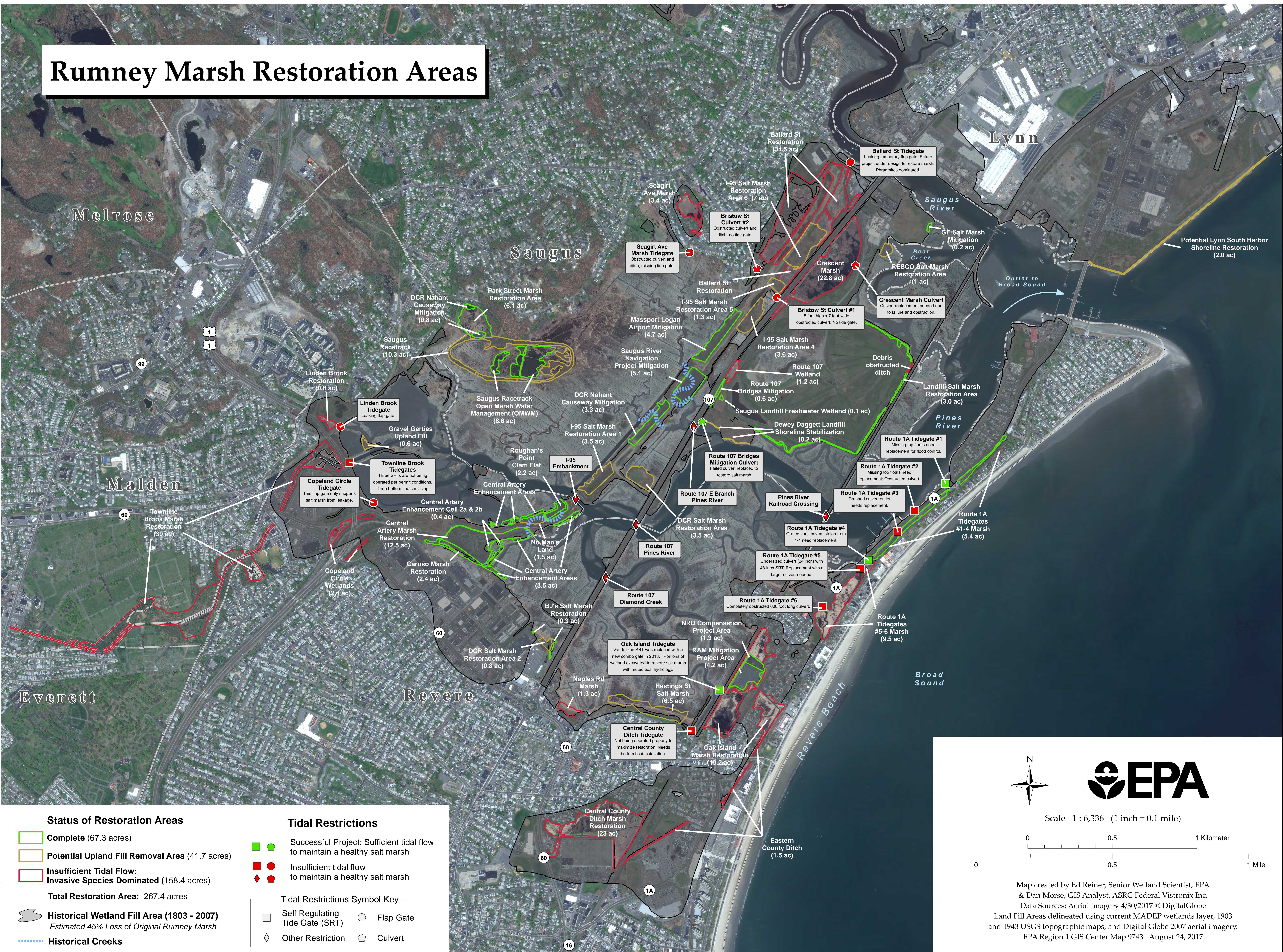


Rumney Marsh Restoration Areas



Status of Restoration Areas

- Complete (67.3 acres)
- Potential Upland Fill Removal Area (41.7 acres)
- Insufficient Tidal Flow; Invasive Species Dominated (158.4 acres)

Total Restoration Area: 267.4 acres

 Historical Wetland Fill Area (1803 - 2007)
Estimated 45% Loss of Original Rumney Marsh

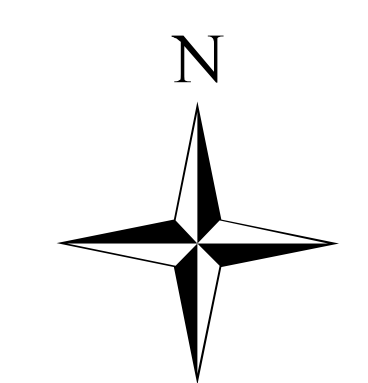
Historical Creeks

Tidal Restrictions

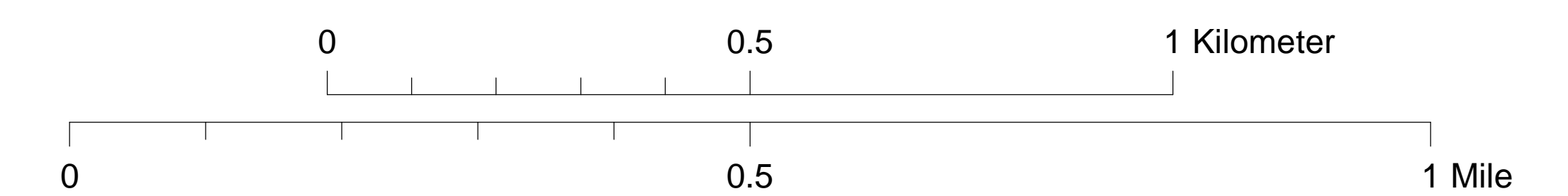
- Successful Project: Sufficient tidal flow to maintain a healthy salt marsh
- Insufficient tidal flow to maintain a healthy salt marsh

Tidal Restrictions Symbol Key

- Self Regulating Tide Gate (SRT)
- Flap Gate
- ◇ Other Restriction
- ◊ Culvert



Scale 1:6,336 (1 inch = 0.1 mile)



Map created by Ed Reiner, Senior Wetland Scientist, EPA & Dan Morse, GIS Analyst, ASRC Federal Vistronix Inc.
Data Sources: Aerial imagery 4/30/2017 © DigitalGlobe
Land Fill Areas delineated using current MADEP wetlands layer, 1903 and 1943 USGS topographic maps, and Digital Globe 2007 aerial imagery.
EPA Region 1 GIS Center Map 9743 August 24, 2017