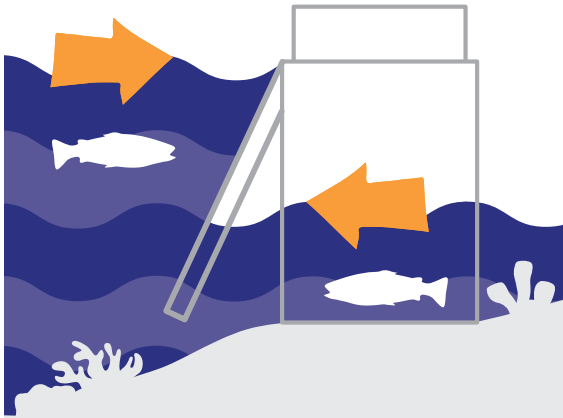


## What is a tide gate?

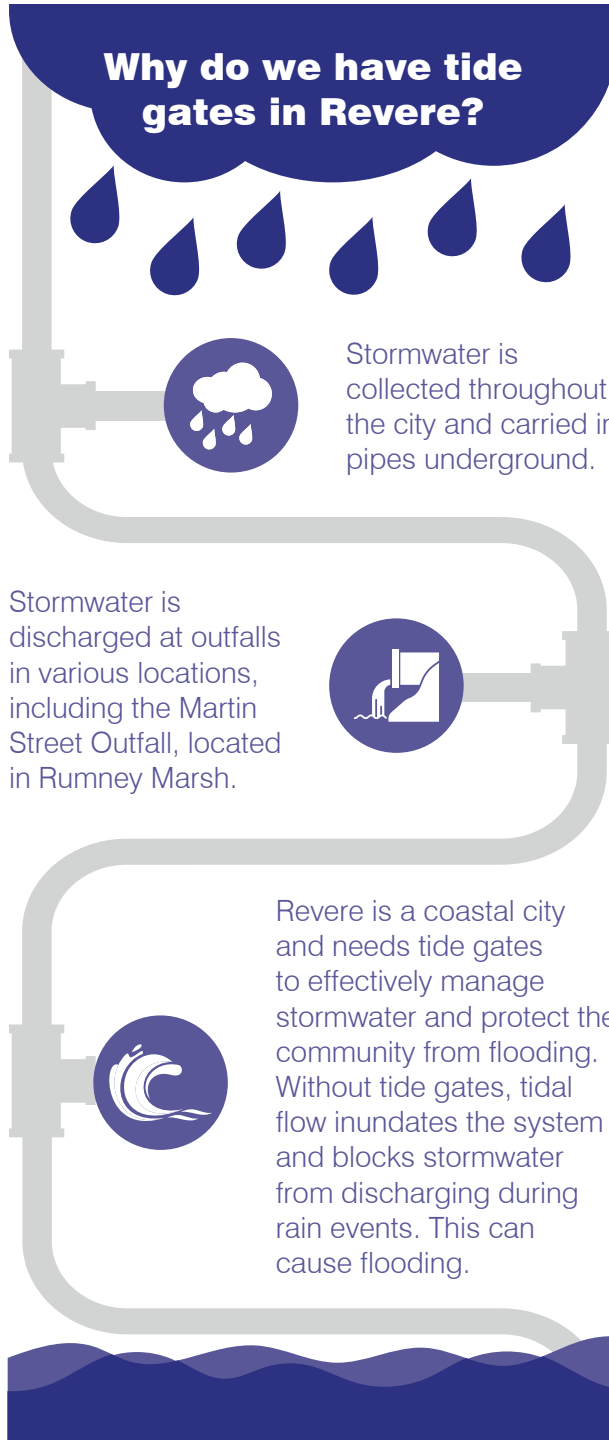
A tide gate is a device used to control water flow in a coastal area where stormwater and streams flow - out to sea and the ocean flows in toward land.



## How does a tide gate work?

Tide gates open to allow stormwater to flow freely out to sea, but close to prevent seawater from flowing back in toward land. The tide gate acts as an outfall to discharge stormwater at low tide, while preventing seawater from flooding into the stormwater system when the outfall is submerged at high tide.

## Why do we have tide gates in Revere?



## What is a salt marsh?



Salt marshes are coastal wetlands where seawater flows in and out with the tides. They have many important benefits including:



Reducing flooding



Improving water quality



Fostering biodiversity



Providing habitat and shelter for birds and animals



Sequestering carbon



# Project Overview



The City of Revere is working with consultants from Weston & Sampson to improve the Martin Street tide gate and outfall to Rumney Marsh.



Design, permitting, and community engagement are expected to occur through June 2025.



The Diamond Creek Catchment Climate Resilience Improvements – Tide Gate Design and Permitting Project is funded by the Municipal Vulnerability Preparedness grant program and will help to reduce flooding and protect the community.



Scan the QR code or visit the link to access **Revere's Engineering website**  
[tinyurl.com/RevereEngineering](https://tinyurl.com/RevereEngineering)



Escanea el código QR o visita el enlace para leer el folleto en español  
[tinyurl.com/RevereBrochureSpanish](https://tinyurl.com/RevereBrochureSpanish)



امسح رمز الاستجابة السريعة بكاميرا تليفونك أو قم بزيارة الرابط لقراءة الكتيب باللغة العربية  
[tinyurl.com/RevereBrochureArabic](https://tinyurl.com/RevereBrochureArabic)



Escaneie o código QR ou acesse o link para ler o folheto em português  
[tinyurl.com/RevereBrochurePortuguese](https://tinyurl.com/RevereBrochurePortuguese)



扫描二维码或访问链接阅读中文手册  
[tinyurl.com/RevereBrochureChinese](https://tinyurl.com/RevereBrochureChinese)



**MVP**  
Municipal Vulnerability Preparedness



## The Diamond Creek Catchment **Climate Resilience Improvements** Tide Gate Design & Permitting Project

