

CHECK SIZE DESIRED			
(✓)	SIZE	"A"	"B"
	20"	20"	25"
	24"	24"	31"
	30"	30"	37"
	34"	34"	41"
	36"	36"	43"
	42"	42"	49"

(✓) CHECK MATERIAL TYPE			
	304L		6%MOLY
	316L		C.S.
	317L		OTHER

GASKET MATERIAL:

PRESSURE RATING:

CERTIFIED BY:

DATE:

REMARKS:

---



---

**CUSTOMER:**

---

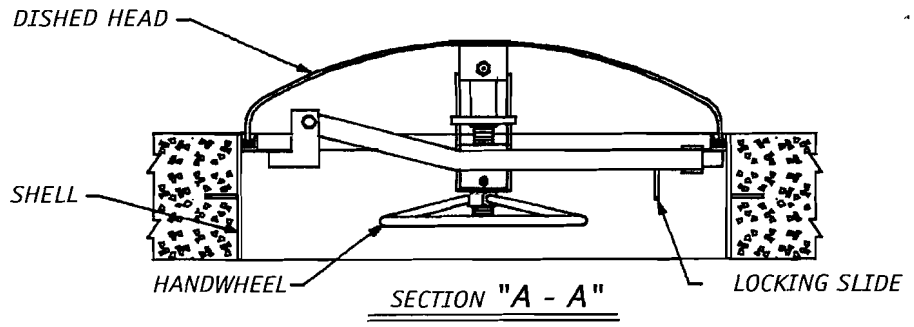
C.A.I. S.O. #	REV. DATE
------------------	--------------

**PRODUCT NO. CM-1**  
**CONCRETE WALL INSTALLATION**

**QUICK-OPENING  
HIDDEN-HINGED MANWAY**

**CHASE ASSOCIATES**

P.O. BOX 75  
EDGECOMB, MAINE 04556  
TEL 207-882-7526 • FAX 207-882-6392  
www.manways.com



MANWAY OPERATION:

- (1) SECTION VIEW "A-A" SHOWS MANWAY IN LOCKED (SEALED) POSITION.
- (2) TURN HANDWHEEL TWO FULL TURNS TO LEFT - UNLATCH LOCKING SLIDE BY PULLING IT TO THE LEFT.
- (3) CONTINUE TO TURN HANDWHEEL TO THE LEFT. PULL HANDWHEEL MECHANISM TO LEFT TO OBTAIN VIEW "B" - FINAL OPENING PREPARATION.
- (4) PUSH ENTIRE HANDWHEEL AND COVER ASSEMBLY "IN" TO OBTAIN VIEW "C" - FULLY OPEN MANWAY.

