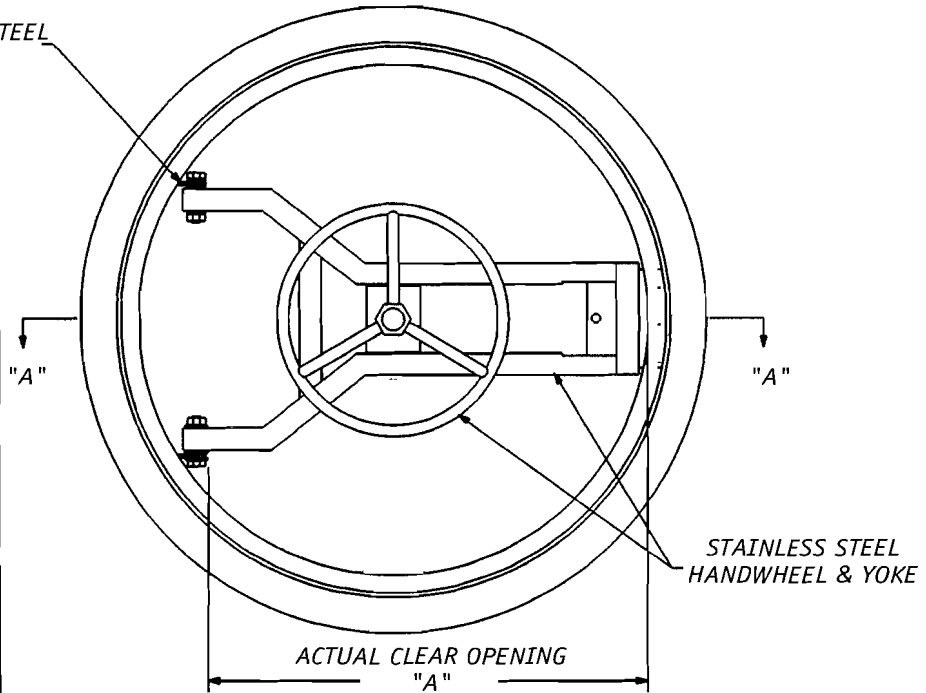


STAINLESS STEEL HINGES

CHECK SIZE DESIRED			
<input checked="" type="checkbox"/>	SIZE	"A"	"B"
	20"	20"	25"
	24"	24"	31"
	30"	30"	37"
	34"	34"	41"
	36"	36"	43"
	42"	42"	49"

CHECK MATERIAL TYPE		
<input checked="" type="checkbox"/>	304L	6%MOLY
	316L	C.S.
	317L	OTHER

GASKET MATERIAL:
PRESSURE RATING:
CERTIFIED BY:
DATE:



REMARKS:

CUSTOMER:

C.A.I.  
S.O. #

REV.  
DATE

PRODUCT NO.

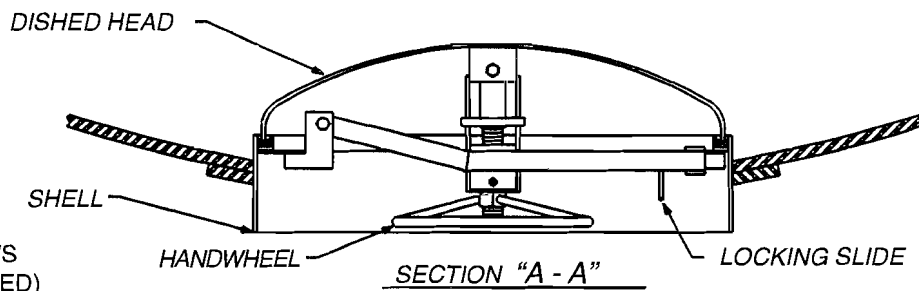
**CM-2**

**STEEL TANK INSTALLATION**

## QUICK-OPENING, HIDDEN-HINGED MANWAY

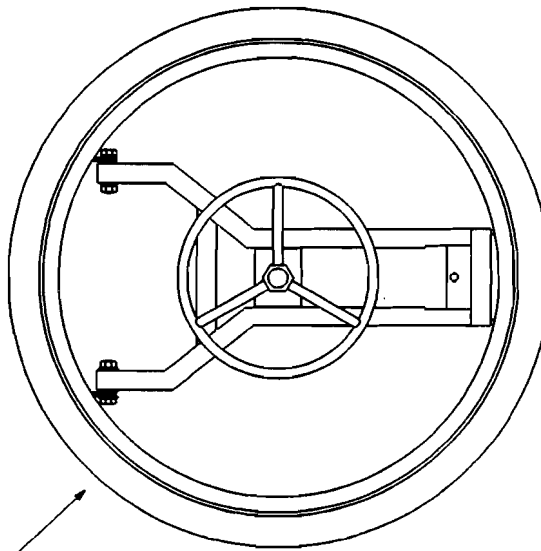
**CHASE ASSOCIATES**

P.O. BOX 75  
EDGEComb, MAINE 04556  
TEL 207-882-7526 • FAX 207-882-6392  
[www.manways.com](http://www.manways.com)



MANWAY OPERATION:

- (1) SECTION VIEW "A-A" SHOWS MANWAY IN LOCKED (SEALED) POSITION.
- (2) TURN HANDWHEEL TWO FULL TURNS TO LEFT - UNLATCH LOCKING SLIDE BY PULLING IT TO THE LEFT.
- (3) CONTINUE TO TURN HANDWHEEL TO THE LEFT. PULL HANDWHEEL MECHANISM TO LEFT TO OBTAIN VIEW "B" - FINAL OPENING PREPARATION.
- (4) PUSH ENTIRE HANDWHEEL AND COVER ASSEMBLY "IN" TO OBTAIN VIEW "C" - FULLY OPEN MANWAY



ELEVATION VIEW OUTSIDE TANK

