

Twenty-third Annual Report

of the

Trustees and Officers

of the

Augusta Water District

for the

Year Ending December 31, 1927

Printed by
The Augusta Press
Augusta, Maine

OFFICERS
AUGUSTA WATER DISTRICT

Trustees

WALTER S. WYMAN	Term expires 1928
ELMER E. NEWBERT	Term expires 1929
WILLIAM D. HUTCHINS	Term expires 1930

President

ELMER E. NEWBERT

Treasurer

WILLIAM D. HUTCHINS

Clerk

WALTER S. WYMAN

Superintendent and Engineer

SIDNEY S. ANTHONY

Foreman

JOHN H. ELLIS, Jr.

Trustees of the Augusta Water District since organization

George E. Macomber	1903 to 1924 (Resigned)
John F. Hill	1903 to 1912 (Died Mar. 16, 1912)
Thomas J. Lynch	1903 to 1916 (Died April 16, 1916)
Robert Morang	1912 to 1919
Percy V. Hill	1916 to 1924 (Resigned)
Frederick W. Plaisted	1919 to 1923 (Resigned)
Robert Morang	1923 to 1924 (Resigned)
Walter S. Wyman	1924—
Elmer E. Newbert	1924—
William D. Hutchins	1924—

Legislative Acts Relating to the Augusta Water District

- Private and Special Laws 1903, Chapter 334, AN ACT to Incorporate the Augusta Water District.
- Private and Special Laws 1905, Chapter 4, AN ACT to Authorize the Augusta Water District to take water from Carleton Pond.
- Private and Special Laws 1905, Chapter 306, AN ACT to Amend the Charter of Augusta Water District.
(Changes compensation of Trustees from \$300 to \$100 each)
- Private and Special Laws 1905, Chapter 360, AN ACT to prevent the Pollution of the waters of Carleton Pond.
- Private and Special Laws 1907, Chapter 17, AN ACT to Amend the Charter of Augusta Water District.
(Extends powers granted by Chapter 4, Laws 1905; provides for filing of report by Trustees with municipal officers of Augusta, annually; authorizes supplying of water in East Winthrop).
- Private and Special Laws 1909, Chapter 405, AN ACT to amend the Charter of the Augusta Water District.
(Authorizes supplying water to City of Hallowell or State Industrial School for Girls).
- Private and Special Laws 1923, Chapter 4, AN ACT to Amend the Charter of the Augusta Water District.
(Relates to territorial limits)
- Public Laws 1925, Chapter 133, AN ACT Relating to the Authorization of Issues of Stocks, Bonds and Notes by Public Utilities
(Authorization for issue of bonds of the District 1926)
- Private and Special Laws 1927, Chapter 52, AN ACT Relating to The Augusta Water District.
(Fixes salary of Board of Trustees at \$1,200.)

Trustees' Report

The Trustees of the Augusta Water District herewith submit their twenty-third annual report for the year ending December 31, 1927.

FINANCIAL

The financial affairs of the District are in a sound and satisfactory condition. The income for 1927 was \$96,687.09 and the expense \$91,812.37. The surplus account carried at \$246,032.78 shows a net increase of \$4,874.72 for the year, while the capital assets stand at \$1,333,343.16, less reserve for depreciation of \$113,879.97.

There are no outstanding temporary loans, the only obligation of the District being the long term bonded indebtedness amounting to \$840,000, against which is the sinking fund reserve of \$98,328.26. The new issue of \$300,000 Extension and Improvement Bonds, issued and sold in 1926, are payable \$10,000 annually. The first installment of \$10,000 was paid out of earnings September 12, 1927.

SINKING FUND RESERVE

This account now stands at \$98,328.26, and with the exception of cash deposits in Augusta banks, is made up of Augusta Water District bonds purchased from time to time in the market at prices below par.

One year ago the sinking fund was reported at \$244,326.20 and the long term bonded debt at \$1,000,000. With the new statement of the sinking fund at \$98,328.26, the long term bonded debt is carried at \$840,000. The change is explained by a new detail in the Auditor's report showing \$160,000 of the bonded debt retired through surplus.

WATER RATES

The water rates effective June 1, 1924, and modified on petition of the District providing for certain reductions in rates effective March 1, 1926, are working satisfactorily and appear to the Trustees equitable.

It is important to remember that Augusta is getting its water at cost. This has been true since the formation of the District. No profit accrues either to persons in the form of dividends or to the city through surplus. The charter provides that any surplus remaining at the end of the year may be paid to the city of Augusta. There has never been such a surplus and never will be. For if such a surplus were earned, reduction in rates would follow.

So closely do expenditure and income balance in this regard that in 1926 a net loss was shown of \$239.75, while at the close of business, December 31, 1927, the books show a net profit of \$4,874.72.

COLLECTIONS

Water customers are well educated to the necessity of prompt payments, and your Trustees are happy to report that the collections, both for water rentals and services, are practically 100%. And this is as it should be, for no water customer should be called upon to bear the burden of carrying other customers who do not pay. Accounts for the installation of services are promptly paid because a rule of the District requires a deposit from every applicant before work is begun. This rule is necessary and is enforced without respect to persons, firms or corporations. It works no hardship and protects the District against loss in a mixed group of nearly 3,000 customers connected by services with the system.

WESTERN AVENUE

In 1925-6 as much was done for Western Avenue as seemed to the Trustees advisable or perhaps possible. During the year, however, Merrill T. Lee and other residents of outer



PUMPING STATION AND GROUNDS INCLUDING RESIDENCE

The total consumption of water for the year amounted to 961,900,000 gallons, the average daily consumption being 2,635,000 gallons. Electric current used represents 166,868 KWH at a cost of \$3,337.36.

NEW PUMP

In order to maintain and improve the efficiency of the pumping station, the District has contracted for a new and improved type of electric centrifugal pump. This new pump will be installed early in 1928 and in conjunction with one of the older electric pumps, which will be improved and put into first class condition, the capacity of the station will be increased to 5,000,000 gallons daily. This increased capacity insures fewer pumping hours and a consequent decrease in the cost of electric current. In view of an emergency, where water is needed and a lot of it, the importance of this proposed improvement at the pumping station should not be lost sight of.

STEAM PLANT

The pumping station has an auxiliary steam plant installed as an emergency outfit and connected with Lake Cobbosseecontee. Carleton Pond, however, continues to supply the water for the District and for 16 years no water from Lake Cobbosseecontee has been pumped into the mains. It is necessary, however, that this steam plant be ready at all times for instant service. The big steam pump was overhauled in the fall and is now in perfect condition. An emergency of one sort or another may arise at any time when this steam pump connection with Lake Cobbosseecontee would become the main dependence of the District.

With the installation of the new electric centrifugal pump and the complete overhauling of the steam plant, the pumping station at East Winthrop will be a unit of which the District may justly be proud and in whose efficiency the Trustees have every confidence.

EXTENSION AND IMPROVEMENT PROGRAMME COMPLETED

This programme, outlined in a survey by Metcalf & Eddy in 1924, is practically completed. A few items left unfinished, including the insertion of a number of gate valves in the distribution mains, will be cared for in the new year.

Among the necessary items of repair calling for immediate attention is the re-planking of the old railroad bridge which carries a 16" pipeline supporting distribution on the east side of the Kennebec River. This work will be done with care, and a type of wood used that will withstand the elements for many years.

RETURN TO NORMAL

After three years of special work the District is prepared to settle down to the routine work of maintenance and extension demanded in a normal upkeep of the system. It is of interest to note that the large programme of betterment undertaken three years ago has been worked out without burden to the city, while a reduction of rates was asked for by the Trustees and made effective by the Public Utilities Commission on March 1, 1926.

The principal item in this new rate, and affecting all water customers, is a reduction in the first faucet charge from \$6 to \$5.

Respectfully submitted,

ELMER E. NEWBERT
WILLIAM D. HUTCHINS
WALTER S. WYMAN

Trustees

Auditor's Report

Augusta, Maine, February 1, 1927.

The Board of Trustees,
Augusta Water District,
Augusta, Maine.

Gentlemen:

I have made an examination of the accounts of the Augusta Water District for the calendar year ending December 31, 1927, and present herewith the following statements:

- Schedule No. 1. Statement of Assets and Liabilities as of December 31, 1927.
- Schedule No. 2. Detail of Assets and Liabilities as of December 31, 1927.
- Schedule No. 3. Statement of Income and Expense for the year 1927.
- Schedule No. 4. Statement of Cash Receipts and Cash Expenditures for the year 1927.
- Schedule No. 5. Comparative Statement of Assets and Liabilities, December 31, 1926, and December 31, 1927.

CERTIFICATE

I certify that I have made an examination of all accounts representing cash and securities as of December 31, 1927, either by physical examination of such assets or by obtaining certifications of depositaries as to their custody, and in my opinion, the accompanying Balance Sheet is correct and in accordance with the books of accounts.

Respectfully submitted,
WALTER B. FRASER,
Public Accountant

SCHEDULE No. 1

Statement of Assets and Liabilities as of December 31, 1927

<i>Current Assets</i>		<i>Current Liabilities</i>	
Cash in General Fund		Accrued Interest on Long Term Debt	
Detail No. 1	\$22,396 38	Detail No. 8	\$25,566 66
Accounts Receivable		Surplus General Fund	
Detail No. 2	10,807 21	Detail No. 11	26,569 62
Materials and Supplies			
Detail No. 3	15,105 56		
Bond Discount & Expense			
Detail No. 4	4,827 13		
	<hr/>		<hr/>
	\$53,136 28		\$53,136 28
 <i>Sinking Funds Invested</i>		 <i>Sinking Funds</i>	
Cash in State Trust Co.		Sinking Fund Reserve	
Detail No. 5	\$ 7,281 99	Detail No. 5	\$98,328 26
Cash in Augusta Trust Co.			
Detail No. 5	9,851 04		
Cash in First Nat'l Granite			
Detail No. 5	3,455 05		
Bonds Detail No. 5	77,740 18		
	<hr/>		<hr/>
	\$98,328 26		\$98,328 26
 <i>Capital Assets</i>		 <i>Capital Liabilities</i>	
Plant or Fixed Value		Long Term Debt	
Detail No. 6	\$1,333,343 13	Detail No. 9	\$840,000 00
<i>Less</i>		Long Term Debt, Retired	
Reserve for Depreciation		Detail No. 10	160,000 00
Detail No. 7	113,879 97	Capital Surplus	
	<hr/>	Detail No. 11	219,463 16
	\$1,219,463 16		<hr/>
			\$1,219,463 16

SCHEDULE No. 2

<i>Detail No. 1</i>			
<i>Cash as per General Fund</i>			
Bank Balance as per bank			\$23,089 90
	<i>Less</i>		
Checks Outstanding			
Check No. 8857		\$452 33	
8858		76 44	
8859		164 12	
8860		63	693 52
		<hr/>	<hr/>
Balance as per Statement			\$22,396 38

*Detail No. 2**Accounts Receivable*

Due on Water Rents	\$10,706 58	
Due on Services	100 63	10,807 21

*Detail No. 3**Materials and Supplies*

Pipe and fittings on hand		15,105 56
---------------------------	--	-----------

*Detail No. 4**Bond Discount and Expense*

This is the net amount to be pro rated over the life of the issue of bonds		4,827 13
--	--	----------

*Detail No. 5**Sinking Fund Investments*

Cash in State Trust Co. Book No. 16402	\$7,281 99	
Cash in Augusta Trust Co. Book No. 13138	9,851 04	
Cash in First National Granite Bank Book No. 852	3,455 05	
Augusta Water District Bonds Par Value \$84,500 00	77,740 18	\$98,328 26

*Detail No. 6**Plant or Fixed Capital Account*

Balance June 30, 1915		\$827,488 11
Additions to Plant since June 30, 1915		
Land devoted to Water operations	\$ 8,199 39	
General Structures	35,463 65	
Works & Station Structures	31,666 77	
Purification System	13,108 12	
Reservoirs and Standpipes	143,787 60	
Distribution Mains	243,112 07	
Services	7,086 31	
Meters	7,997 83	
Customers Installations	453 90	
Hydrants & Fire Cisterns	272 48	
General Office Equipment	1,395 38	
Stable and Garage Equipment	3,969 04	
Other Equipment	7,454 58	
Engineering & Superintendence	592 47	
Law Expenditures	1,305 43	505,855 02

\$1,333,343 13

*Detail No. 7**Reserve for Depreciation*

Balance January 1, 1927	100,546 54	
Additions during year 1927	13,333 43	113,879 97

*Detail No. 8**Accrued Interest on Long Term Debt*

Actual Interest accrued on bonds but coupons not yet matured		26,566 66
---	--	-----------

*Detail No. 9**Long Term Debt*

Bonds Outstanding	840,000 00
-------------------	------------

*Detail No. 10**Long Term Debt Retired through Surplus*

This account represents the amount of debt retired	160,000 00
--	------------

*Detail No. 11**Surplus and how employed**Assets Increased*

Cash Sinking Fund	\$1,002 06
Accounts Receivable	4,047 01
Materials and Supplies	8,803 45
Fixed Capital	32,547 27

Liabilities Decreased

Long Term Debt	160,000 00
Sinking Fund Reserve	145,997 94

\$ 352,397 73

*Less**Assets Decreased*

Cash General Fund	21,121 68
Bonds Discount and Expense	167 90
Sinking Fund Bonds	147,000 00

Liabilities Increased

Accrued Interest	5,900 00
Long Term Debt Retired	160,000 00
Depreciation Reserve	13,333 43

\$347,523 01

Net increase for year	4,874 72
-----------------------	----------

Surplus Jan. 1, 1927	241,158 06
----------------------	------------

Surplus December 31, 1927	\$246,032 78
---------------------------	--------------

SCHEDULE No. 3

*Statement of Income and Expense Year Ending December 31, 1927**Income*

Commercial Revenues	\$83,968 96
Hydrant Revenue	5,910 00
Street Sprinkling	308 00
Fountains	45 00
Profit on Jobbing Accounts	826 41
Other Utilities	268 32
Non Operating Revenue	450 00
Interest and Dividends	4,910 40
	\$96,687 09

REPORT OF AUDITOR

15

Expenses

Pumping Expense	\$5,979 77	
Purification Expense	710 86	
Distribution	5,493 94	
Commercial	2,171 76	
Salaries and Expenses, General Officers	3,683 06	
General Office Supplies and Expenses	1,477 66	
General Expense	98 86	
General Law Expense	282 00	
Injuries and Damages	7 76	
Insurance	979 83	
Stable and Garage Expense	2,730 16	
Storeroom Expense	89 45	
Maintenance General Structures	41 20	
Taxes	662 67	
Interest Deductions	39,900 00	
Sinking Funds	14,002 06	
Extinguishment on Discount on Debt	167 90	
Depreciation	13,333 43	91,812 37
		<hr/>
Profit for year		4,874 72
		<hr/>
		\$96,687 09

SCHEDULE NO. 4

Statement of Cash Receipts and Cash Expenditures Year Ending Dec. 31, 1927

Bank Balance, January 1, 1927 \$43,518 06

Receipts

Water Rents	\$86,273 67	
Services	5,466 01	
Non Operating Revenue	450 00	
Interest and Dividends	4,018 51	
Interest	908 34	
Sinking Fund	3,016 45	
Rebate Insurance	171 00	
Stable and Garage	94 95	
Distribution Supplies	12 80	
Services	87 50	
Purification Supplies	779 24	
Time Deposits	30,000 00	131,278 47
		<hr/>
		\$174,796 53

Expenditures

→ Distribution Mains	\$13,041 02	-12,005.57	5353.25
Works and Station Structures	13 00		
Reservoirs and Standpipes	20,649 50		
→ Services	6,063 00	-3,767.11	
→ Meters	1,087 81	-3,763.43	
→ Customers Installations	22 20		
→ Stable and Garage Equipment	2,281 07	-967.26	574.68
→ Hydrants and Fire Cisterns	272 48	-1,218.84	
		-205.13	

→ Land Devoted to Water Operations	100 59	1720.80	10150
→ Other Equipment	80	770.88	
→ General Structures	440 70	140.00	
→ General office supplies	1,477 66	644.17	
→ Insurance	1,150 83	643.50	
→ Stable and Garage Expense	2,825 11	3445.02	
→ Storeroom expense	89 45	375.28	
→ Maintenance Hydrants	615 79	144.63	
→ Materials and supplies	1,903 88	1768.58	
→ Sinking Fund	17,018 51	474.50	
→ General Exp.	98 86		
→ Pumping labor	1,627 60	1310.85	
→ Other supplies and expenses	100 08	54.83	
→ Maintenance of services	332 18	3568.30	250.63
→ Maintenance of Distribution Mains	617 72	567.61	562.61
→ Distribution of Labor	2,785 80	334.89	
→ Distribution supplies	761 11	2012.97	
→ Commercial salaries	2,138 44	3123.75	
→ Power	3,615 82	1330.55	
→ Maintenance Meters	212 43	327.99	314.49
→ Salaries and expenses general officers	3,683 06	3612.65	
→ Interest Long Term Debt	34,000 00	29900.00	
→ Commercial Revenue	22 17	19.09	
→ Maintenance General Structures	41 20	122.53	
→ Purification supplies	1,335 46	526.04	
→ Maintenance Purification system	154 64	71.44	
→ Maintenance Pumping Station Equipment	375 17	76.80	54.65
→ Water Meters and Installation Work	101 61	141.14	129.41
→ Maintenance of Reservoirs and Standpipes	69 80	2765.60	
→ Maintenance Pumping Station Structures	148 95	57.71	
→ Maintenance of Distribution Structures	7 30	1.51	
→ Taxes	662 67	239.77	
→ Maintenance Dams and Wells	56 05	471.33	
→ Commercial office supplies and expenses	33 32	218.48	
→ General Law expenses	282 00		
→ Maintenance of Fountains	3 00		
→ Maintenance of Aqueducts	56 10		69.65
→ Injuries and Damages	7 76		
→ Time Deposits	30,000 00		
→ Interest	16 45	152,400 15	7,880.

Bank Balance December 31, 1927

22,396 38

\$174,796 53

Electric Power Pump Equip

31,733.43

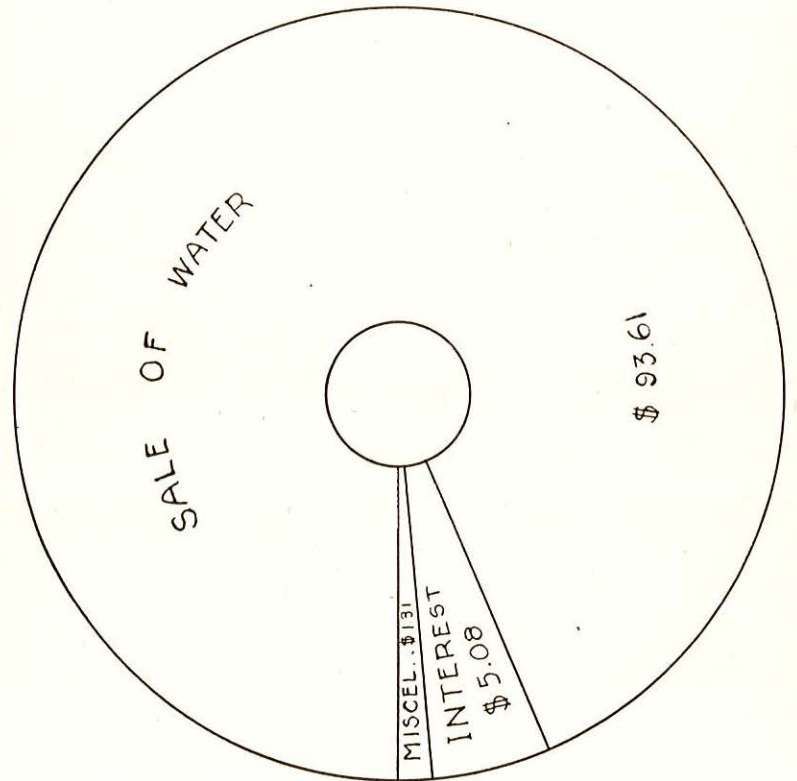
Purification System
Gen office Equipment12,500.00
1443.00
371.93

SCHEDULE NO. 5

*Comparative Statement of Assets, Liabilities and Surplus
December 31, 1927—December 31, 1926*

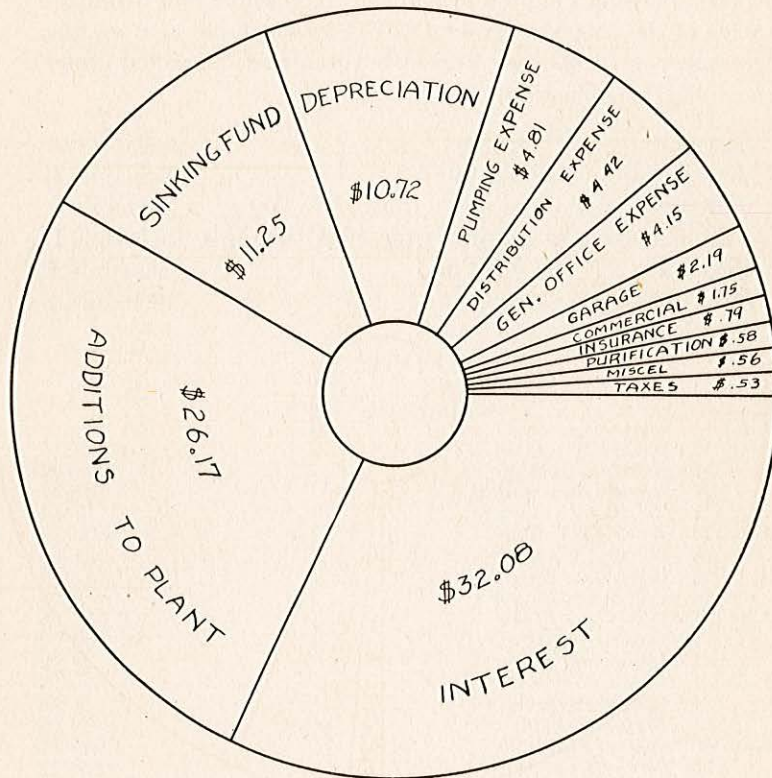
<i>Assets</i>			
	Dec. 31 1927	Dec. 31 1926	Increase or decrease*
Cash General Fund	\$ 22,396 38	43,518 06	21,121 68*
Cash Sinking Fund	20,588 08	19,586 02	1,002 06
Accounts Receivable	10,807 21	6,760 20	4,047 01
Materials and Supplies	15,105 56	6,302 11	8,803 45
Bond Discount and Expense	4,827 13	4,995 03	167 90*
Sinking Fund Bonds	77,740 18	224,740 18	147,000 00*
Fixed Capital	1,333,343 13	1,300,795 86	32,547 27
			<hr/> 121,889 79
	<hr/> \$1,484,807 67	<hr/> \$1,606,697 46	
<i>Liabilities and Surplus</i>			
Accrued Interest	\$ 25,566 66	20,666 66	5,900 00
Long Term Debt	840,000 00	1,000,000 00	160,000 00*
Long Term Debt Retired	160,000 00		160,000 00
Sinking Fund Reserve	98,328 26	244,326 20	145,997 94*
Depreciation Reserve	113,879 97	100,546 54	13,333 43
			<hr/> \$126,764 51
Surplus	246,032 78	241,158 06	
Net Increase			<hr/> 4,874 72
	<hr/> \$1,484,807 67	<hr/> \$1,606,697 46	

INCOME CHART



HOW THE DISTRICT DERIVED
EACH \$100⁰⁰ OF INCOME

EXPENSE CHART



HOW THE DISTRICT SPENT
EACH \$100⁰⁰ OF INCOME

Treasurer's Report

The following itemized account of the receipts and disbursements of the Augusta Water District for the fiscal year ending December 31, 1927, are herewith submitted, classified under the following schedules:

Receipts from Operations	Schedule A
Receipts from Sinking Fund	Schedule B
Disbursements of receipts from Operations	Schedule C
Disbursements of receipts from Sinking Fund	Schedule D
Statement of Sinking Fund	Schedule E
Additions to Sinking Fund	Schedule F

SCHEDULE A

Receipts from Operations

1927		\$
Jan.	31 Water Collections	6,704 15
	31 Service Collections	123 62
	31 Interest on Deposits	97 87
	31 Rebate on Cylinders	77 87
Feb.	28 Water Collections	692 73
	28 Service Collections	128 96
	28 Interest on Deposits	52 93
	28 Rebate on Cylinders	116 98
Mar.	31 Water Collections	6,017 98
	31 Service Collections	42 52
	31 Interest on Deposits	20 72
	31 Rental of Wires on Bridge	50 00
	31 Rebate on Gasoline	1 40
	31 Rebate on Paint	39 98
April	30 Water Collections	1,967 82
	30 Service Collections	220 72
	30 Interest on Deposits	20 10
	30 Rebate on Cylinders	96 78
	30 Sale of Shop	300 00
	30 Rebate on Insurance	71 00
May	31 Water Collections	804 04
	31 Service Collections	348 09
	31 Interest on Deposits	14 71
June	30 Water Collections	27,758 79
	30 Service Collections	481 42
	30 Interest on Deposits	17 37
	30 Rebate on Insurance	31 00
	30 Rebate on Cylinders	136 53

REPORT OF TREASURER

21

July	31	Water Collections	8,497	69
	31	Service Collections	370	55
	31	Interest on Deposits	31	44
	31	Rebate on Insurance	69	00
	31	Toll Calls and Gasoline	19	10
Aug.	31	Water Collections	1,370	14
	31	Service Collections	273	10
	31	Interest on Deposits	27	27
	31	Rebate on Cylinders	117	03
Sept.	30	Water Collections	5,280	21
	30	Service Collections	648	58
	30	Interest on Deposits	8	76
	30	Interest on Time Deposits	582	77
Oct.	31	Water Collections	1,647	99
	31	Service Collections	1,027	49
	31	Interest on Deposits	12	10
	31	Rebate on Cylinders	97	52
	31	Rebate on Gasoline	22	10
	31	Sale of Tires	18	00
Nov.	30	Water Collections	699	22
	30	Service Collections	1,060	79
	30	Interest on Deposits	13	74
	30	Rebate on Cylinders	136	53
Dec.	31	Water Collections	24,832	91
	31	Service Collections	740	17
	31	Interest on Deposits	8	56
	31	Rebate on Fittings	87	50
	31	Rebate on Gasoline	7	17
	31	Sale of Hay	100	00
1927		Total Receipts from Operations	\$94,243	51
Jan.	1	Cash on Hand	43,518	06
		Total Receipts for Year	\$137,761	57

SCHEDULE B

Receipts from Sinking Fund

Feb.	28	Cash for \$2,000 Augusta Water Dist. 1934 Bonds	\$2,001	56
Mar.	31	Interest Deposit State Trust Co.	38	35
	31	Interest Deposit Augusta Trust Co.	54	34
	31	Interest Deposit First National Granite Bank	75	15
	31	Coupons Augusta Water District	870	00
April	30	Coupons Augusta Water District	760	00
June	30	Interest Deposit Augusta Trust Co.	80	22
	30	Cash for \$1,000 Augusta Water District Bond	1,014	89
Sept.	30	Interest Deposit State Trust Co.	142	05
	30	Interest Deposit First National Granite Bank	67	74
	30	Interest Deposit Augusta Trust Co.	84	99
Oct.	31	Interest Deposit State Trust Co.	72	09
	31	Coupons Augusta Water District	1,690	00
Dec.	31	Interest Deposit Augusta Trust Co.	83	58
			\$7,034	96

SCHEDULE C

Disbursements of Receipts from Operations

Jan.	1	Sterling Product Co. Paint and Cement	\$ 56 01
	1	John H. Ellis, Jr. Telephone Service	18 00
	1	Central Maine Power Co. Lighting and Power Service	16 23
	3	Maine Central Railroad Co. Freight	1 68
	3	Pay Roll Dec. 27, 1926—Jan. 1, 1927	313 12
	10	Pay Roll Jan. 2-8	312 17
	13	National Shawmut Bank Coupons due Feb. 1, 1927	11,000 00
	17	Pay Roll Jan. 10-15	288 27
	17	Hallowell Granite Works Plug Drills	10 44
	17	O. B. Frost Co. Labor and Material	9 20
	17	Quimby's Art Store Office Supplies	3 60
	17	Macomber, Farr & Whitten Insurance	58 89
	17	Maine Water Utilities Ass'n Dues	10 00
	17	E. E. Burnham Co. Inc. Pipe	2,195 31
	17	Stone & Cooper Coal Co. Coal	103 15
	17	Fifield Bros. Co. Automobile Supplies	15 92
	17	Waterville Motor Co. Automobile Supplies	2 50
	17	New England Tel. & Tel. Co. Telephone Service	29 88
	17	Central Maine Power Co. Lighting and Power Service	439 84
	17	Brooks Hardware Co. Supplies	42 15
	17	Augusta Press Rubber Stamp	2 94
	24	Pay Roll Jan. 17-22	297 47
	31	Pay Roll Jan. 24-29	304 06
Feb.	3	New England Tel. & Tel. Co. Telephone Service	35 53
	3	Maine Central Railroad Co. Freight	9 97
	3	Augusta Auto Supply Co. Automobile Supplies	14 50

REPORT OF TREASURER

23

	3	Nichols Garage	
		Labor	1 67
	3	Kennebec Journal Co.	
		6" Adv.	6 36
	3	Walter B. Fraser	
		Annual Audit	75 00
	3	Central Maine Power Co.	
		Lighting and Power Service	18 43
	3	Darling Automobile Co.	
		Automobile Supplies	1 90
	3	George W. Merrill	
		Office Supplies	4 55
	3	Capital City Motor Co.	
		Labor and Material	5 55
Feb.	3	Augusta Ice Co.	
		Coal	100 00
	3	Waldo Bros. & Bond Co.	
		Shovels	57 82
	3	E. E. Abbott	
		Rebate on Water Bill	5 00
	3	Pay Roll	
		Jan. 31—Feb. 5	297 37
	10	Braman-Dow Co.	
		Pipe	4 17
	10	Hussey Hardware Co.	
		Gasoline and Supplies	97 60
	14	Pay Roll	
		Feb. 7-12	295 67
	15	Electro Bleaching Gas Co.	
		Chlorine	165 78
	15	Macomber, Farr & Whitten	
		Insurance	63 60
	15	Maine Central Railroad Co.	
		Freight	1 77
	15	Central Maine Power Co.	
		Lighting and Power Service	427 11
	15	Fifield Bros. Co.	
		Supplies	7 42
	15	Harry T. Jose	
		Oil	1 20
	15	National Shawmut Bank	
		Services as paying Agent for Coupons	55 00
	15	J. H. Cogan Co.	
		Sundries	4 23
	15	Brooks Hardware Co.	
		Supplies	6 70
	15	Associated Architects Printing and Supply Co.	
		2 Gelithos on white cloth	19 20
	15	Tracy and Metcalf	
		Labor and Material	11 96
	15	National Meter Co.	
		Meter Parts	6 00
	21	Pay Roll	
		Feb. 14-19	281 75
	28	Pay Roll	
		Feb. 21-26	303 75

Mar. 2	The American Brass Co. Goosenecks.....	86 63
2	R. W. Soule Emporium Shades.....	4 90
2	Augusta Press Printing Pay Rolls.....	14 70
2	Maine Central Railroad Co. Freight.....	2 17
2	W. S. Darley & Co. Dipping Needle.....	22 99
2	Maine Central Railroad Freight.....	5 50
2	Central Maine Power Co. Power and Lighting Service.....	15 35
2	Kennebec Oil Co. Kerosene.....	8 50
3	Petty Cash Express and Sundries.....	16 07
7	Pay Roll Feb. 28—Mar. 6.....	311 15
8	P. F. McDonald & Co. Paving Breakers and Steel Cutters.....	15 52
9	Ingersoll-Rand Co. Compressor Parts.....	2 52
9	Wallace & Tiernan Co. Inc. Chlorinator Parts.....	120 90
9	Stone & Cooper Coal Co. Coal.....	100 00
9	Macomber, Farr & Whitten Insurance.....	331 50
9	Fifield Bros Co. Chains.....	4 00
9	Builders Iron Foundry Offset.....	17 28
9	New England Tel. & Tel. Co. Telephone Service.....	28 20
11	Hussey Hardware Co. Gasoline and Supplies.....	29 01
11	Brown & Wales Co. Meuller Tapping Machine and Parts.....	103 63
11	National Meter Co. Repairing Meters.....	8 15
11	Cement Lined Pipe Co. Pipe and Fittings.....	431 22
11	Capital City Motor Co. Labor and Supplies.....	5 23
14	Pay Roll Mar. 7 12.....	302 15
14	Old Colony Trust Co. Coupons Due Apr. 1, 1927.....	6,000 00
21	Pay Roll Mar. 14-19.....	303 75
24	Maine Central Railroad Co. Freight.....	16 25
24	Central Maine Power Co. Lighting and Power Service.....	382 79

REPORT OF TREASURER

25

24	The Sterling Product Co.	
	Paint	3 28
24	Electro Bleaching Gas Co.	
	Liquid Chlorine	165 78
24	Macomber, Farr & Whitten	
	Insurance	79 75
24	Braman-Dow & Co.	
	Fittings	18 78
24	John A. Manson	
	Price Cards	2 55
25	National Meter Co.	
	Meter Parts and Meters	699 59
25	Water Works Engineering Co.	
	Subscription	3 00
25	Brown-Wales Co.	
	Pipe and Fittings	282 29
25	Cement Lined Pipe Co.	
	Nipples	16 65
25	Darling Automobile Co.	
	Automobile Supplies	20 35
28	Pay Roll	
	Mar. 21-26	288 80
April 1	Augusta Press	
	Printing	12 74
1	Rensselaer Valve Co.	
	Hydrant	68 12
1	Sterling Product Co.	
	Paint	24 70
1	Motor Tool Specialty Co.	
	Fittings	16 71
4	Pay Roll	
	Mar. 28—April 2	316 53
8	Builders Iron Foundry	
	Offset	16 06
8	New England Tel. & Tel. Co.	
	Telephone Service	32 95
8	Central Maine Power Co.	
	Power and Lighting Service	389 37
8	Maine Central Railroad Co.	
	Freight	2 47
8	National Meter Co.	
	Meter Parts	5 92
April 8	Worthington Pump and Machinery Corp.	
	Basket and Strainer	80 00
8	Tracy & Metcalf	
	Labor and Material	1 88
8	Hussey Hardware Co.	
	Gasoline and Supplies	40 27
8	Purinton Bros. Co.	
	Cement	3 50
8	Fifield Bros. Co.	
	Flashlight and Batteries	4 05
8	Quimby's Art Store	
	Office Supplies	12 35
8	Augusta Machine Shop Inc.	
	Labor	3 50

	11	Pay Roll		
		April 4-9	322	97
	15	Stone & Cooper Coal Co.		
		Coal	50	00
	15	Brooks E. Carter		
		Ledger	20	20
	15	Waldo Bros. & Bond Co.		
		Hose	23	27
	15	Swift & Turner Co.		
		Mop	1	00
	18	Pay Roll		
		April 11-16	339	75
	21	H. L. Pishon		
		Services	75	00
	25	Pay Roll		
		April 18-24	319	60
	26	S. S. Anthony		
		Fare to Portland	5	40
	30	Gardiner Motor Co.		
		Graham Truck	1,095	00
	30	Bradstreet Motor Co.		
		Chevrolet Roadster	585	00
May	2	Pay Roll		
		April 25-30	355	05
	2	Darling Automobile Co.		
		Automobile Supplies	50	66
	2	Macomber, Farr & Whitten		
		Insurance	43	50
	2	National Meter Co.		
		Meters	332	40
	2	Motor Tool Specialty Co.		
		Supplies	8	48
	2	J. J. Bidden Cordage Co.		
		Supplies	32	77
	2	Rensselaer Valve Co.		
		Hydrants	204	36
	2	Central Maine Power Co.		
		Lighting & Power Service	10	03
	2	Maine Central Railroad Co.		
		Freight	10	98
	9	Pay Roll		
		May 2-7	361	18
	12	J. C. Arnold, P. M.		
		Stamps	70	21
	12	New England Tel. & Tel. Co.		
		Telephone Service	25	63
	12	Central Maine Power Co.		
		Power	289	34
	12	Harry H. Cushman		
		Services at Carleton Pond	100	00
	12	Braman-Dow & Co.		
		Pipe	110	21
	12	Augusta Trust Co.		
		Deposit Box	20	00
	16	Pay Roll		
		May 9-14	361	30

REPORT OF TREASURER

27

16	Petty Cash	
	Express and Sundries	22 04
21	Augusta Press	
	Annual Reports	280 00
23	J. T. Wyman	
	Repairing Fence	2 00
23	Pay Roll	
	May 16-21	382 90
27	George W. Merrill	
	Office Supplies	53 30
27	Ellis & Ford Mfg. Co.	
	Cutter Wheels	14 97
27	State Forest Nursery	
	Spruce Trees	50 00
27	Chase Bros. & Co.	
	Shrubs.....	29 00
27	Rensselaer Valve Co.	
	Screw and Valves.....	72 00
27	Augusta Lumber Co.	
	Lumber	4 00
27	American LaFrance Fire Engine Co.	
	Fire Extinguisher	52 50
27	Hussey Hardware Co.	
	Gasoline and Supplies	68 71
27	Gasoline Service Inc.	
	Oil	1 15
27	Purinton Bros. Co.	
	Cement	17 50
27	American Tar Co.	
	Tarite	8 25
27	Maine Central Railroad Co.	
	Freight	12 77
27	Brooks Hardware Co.	
	Sundries	12 50
27	Harry T. Jose	
	Labor	3 50
27	Fifield Bros. Co.	
	Automobile Supplies	3 09
27	Central Maine Power Co.	
	Lighting and Power Service	10 00
27	Macomber, Farr & Whitten	
	Insurance	172 00
27	Braman-Dow & Co.	
	Brass Couplings	2 85
31	Pay Roll	
	May 23-29	389 10
June	4 Charles E. Nash & Son	
	Water and Meter Bills	58 50
	4 Cushnoc Paper Co.	
	Fittings	8 20
	4 Economy Sign Service	
	Lettering Trucks	7 00
	4 Brown-Wales & Co.	
	Brass Pipe & Fittings	135 05
	4 E. Corey & Co.	
	Supplies	5 14

4	Maine Central Railroad Co.	
	Freight	2 58
4	Electro Bleaching Gas Co.	
	Liquid Chlorine	165 78
6	Pay Roll	
	May 30-June 5	342 40
6	Maine Central Railroad Co.	
	Freight	6 26
8	Walter Fraser	
	Services	25 00
8	Purinton Bros. Co.	
	Cement	5 25
8	Motor Tool Specialty Co.	
	Supplies	4 43
8	New England Tel. & Tel. Co.	
	Telephone Service & Moving Pole	45 22
8	Central Maine Power Co.	
	Power	209 20
8	Western Union Tel. Co.	
	Telegraph Service	1 42
8	E. Corey & Co.	
	Steel	1 68
8	Eagle Oil and Supply Co.	
	Supplies	21 60
13	Pay Roll	
	June 6-11	468 15
20	Augusta Machine Shop Inc.	
	Steel	1 56
20	Hussey Hardware Co.	
	Gasoline and Supplies	114 65
20	Brown-Wales Co.	
	Nipples and Couplings	10 86
20	Builders Iron Foundry	
	Fittings	14 61
20	Brooks Hardware Co.	
	Fittings	3 95
20	W. L. Blake & Co.	
	Pipe and Fittings	89 89
20	Burroughs Adding Machine Co.	
	Care of Machine	5 55
20	George W. Merrill	
	Office Supplies	1 80
20	George Fullers Sons Inc.	
	Labor	2 20
20	Art Sign Co.	
	Gold Leaf Sign	18 00
20	Augusta Press	
	Rubber Stamp	2 06
20	Wallace & Tiernan Co. Inc.	
	Gas Mask Canisters	5 25
20	Cement Lined Pipe Co.	
	Pipe	166 88
20	R. B. McKim Co. Inc.	
	Shovels	11 76
20	Town of Readfield	
	Taxes	110 34

REPORT OF TREASURER

29

	20	Pay Roll		
		June 13-18	728	71
	23	Maine Central Railroad Co.		
		Freight	5	36
	23	Elmer E. Parkman		
		Rebate on water bills	13	30
	23	Minwax Co. Inc.		
		4 Drums Heavy Water proofing	439	82
	27	Ripley Co.		
		Trailer	10	75
	27	Pay Roll		
		June 20-25	888	05
	27	Augusta Auto Supply Co.		
		Battery	10	00
	27	Addressograph Co.		
		Inspection and Supplies	10	25
	27	Abbott-McKay Inc.		
		Metallic Tape	5	87
	28	Maine Central Railroad Co.		
		Freight	8	97
	28	Tracy and Metcalf		
		Labor and Material	15	22
	28	Nichols Garage		
		Labor	1	50
	28	Standard Oil Co. of New York		
		Gasoline	113	30
	28	Taber & Reid		
		Supplies		96
	28	Darling Automobile Co.		
		Automobile Supplies	1	15
	28	Augusta Lumber Co.		
		Lumber	7	40
July	2	Chester Worthing		
		Bolting Tree		9 00
	5	Pay Roll		
		June 27-July 2	751	80
	11	Pay Roll		
		July 4-9	756	91
	11	Petty Cash		
		Express and Sundries	19	04
	11	National Shawmut Bank		
		Coupons due Aug. 1, 1927	11,000	00
	13	A. C. Horn Sales Corp.		
		Cement and Dehydratine	86	24
	18	Purinton Bros Co.		
		Cement and Coal	15	87
	18	The Maine Central Railroad Co.		
		Freight	6	74
	18	Macomber, Farr & Whitten		
		Insurance	57	64
	18	Augusta Lumber Co.		
		Lumber	30	95
	18	Rensselaer Valve Co.		
		Tapping Sleeve and Valve	454	90
	18	Brown-Wales Co.		
		Fittings	5	93

18	Bradstreet Motor Co.		
	Labor on Chevrolet	5	72
18	Kennebec Oil Co.		
	Kerosene	7	50
18	The Bond Co.		
	Supplies	33	13
18	Kennebec Journal Co.		
	12" Adv.	16	80
18	Central Maine Power Co.		
	Lighting & Power Service & Supplies	201	12
18	Louis Bourgette		
	Sand and Gravel	161	75
18	Pay Roll		
	July 11-16	848	35
18	New England Tel. & Tel. Co.		
	Telephone Service	38	29
18	Mansur Photo Laboratory		
	Negatives & Prints of Reservoir	33	00
18	Standard Oil Co. of New York		
	Gasoline	126	60
18	Hussey Hardware Co.		
	Gasoline and Supplies	99	33
18	Brooks Hardware Co.		
	Supplies	106	44
21	Maine Central Railroad Co.		
	Freight	12	98
21	Capital City Motor Co.		
	Labor and Material	1	70
22	Cement Lined Pipe Co.		
	Nipples	16	20
21	Fifield Bros Co.		
	Automobile Supplies	6	61
21	W. L. Blake & Co.		
	Pump and Fittings	113	17
21	Brown-Wales Co.		
	Pipe and Fittings	493	91
21	Hand E. Wrench Co.		
	Wrenches	13	96
25	Pay Roll		
	July 18-23	738	77
26	Augusta Lumber Co.		
	Lumber	4	20
26	Rensselaer Valve Co.		
	Tapping Sleeve and Valves	99	05
26	A. C. Horn Sales Corp.		
	Dehydratine	12	74
26	Maine Central Railroad Co.		
	Freight	3	07
26	The Bond Co.		
	Moil Points	4	90
Aug. 1	Pay Roll		
	July 25-30	823	11
1	J. A. Folsom		
	Supplies	7	90
2	W. L. Blake & Co.		
	Pipe Fittings	68	95

REPORT OF TREASURER

31

2	Eagle Oil and Supply Co.	
	Compressor Parts	8 21
2	Electro Bleaching Gas Co.	
	Liquid Chlorine	165 78
2	Wallace & Tirman Co. Inc.	
	Chlorinator Parts	6 05
2	Augusta Lumber Co.	
	Lumber	4 90
2	Rensselaer Valve Co.	
	Tapping Sleeves and Valves	138 15
2	New England Tel. & Tel. Co.	
	Telephone Service	27 26
2	Central Maine Power Co.	
	Lighting and Power Service	10 00
2	Macomber, Farr & Whitten	
	Insurance	25 00
2	Town of Winthrop	
	Taxes	100 00
4	Wyman & Simpson	
	Bal. due on Contract new Reservoir	10,431 73
8	Pay Roll	
	Aug. 1-6	1,144 13
11	Maine Central Railroad Co.	
	Freight	53 92
11	Braman-Dow Co.	
	Pipe and Fittings	26 44
11	George Fullers Sons Inc.	
	Brass pipe Bender	4 90
11	The Bond Co.	
	Chisel Blanks	6 47
11	Darling Automobile Co.	
	Labor	4 04
11	Standard Oil Co. of New York	
	Gasoline	54 90
11	Ingersoll-Rand Co. of New England	
	Compressor Parts	3 69
11	Rensselaer Valve Co.	
	Tapping Sleeves and Valves	111 18
11	Hennings Motor Co.	
	Tube	2 52
11	George W. Merrill	
	Office Supplies	2 70
11	Kennebec Oil Co.	
	Kerosene	7 50
11	Louis Bourgette	
	Sand and Gravel	108 25
13	Petty Cash	
	Express and Sundries	28 43
15	Pay Roll	
	Aug. 8-13	1,071 84
18	Maine Central Railroad Co.	
	Freight	3 59
18	The Bond Co.	
	Chisel Blanks	12 94
18	Central Maine Power Co.	
	Lighting and Power Service	254 43

	18	Nichols Garage	
		Labor and Material	3 00
	18	Augusta Machine Shop Inc.	
		Labor and Material	3 75
	18	Kennebec Journal Co.	
		Display Ad.	1 30
Aug.	22	Pay Roll	
		Aug. 15-10	1,046 06
	29	Pay Roll	
		Aug. 22-27	1,044 24
Sept.	1	Pay Roll	
		Aug. 29-Sept. 3	100 00
	1	Bradstreet Motor Co.	
		Chevrolet Truck	500 00
	1	O. B. Frost Co.	
		Use of Mixer	130 00
	2	Maine Central Railroad Co.	
		Freight	22 05
	2	Hedge & Mattheis Co.	
		Clamps for Air Hose	97
	2	Portland Directory Co.	
		Directory	7 00
	2	The Bond Co.	
		Pipe and Fittings	126 45
	2	A. C. Horn Sales Corp.	
		Dehydratine	44 59
	2	Braman-Dow & Co.	
		Service Boxes and Rods	122 30
	2	Spraco Painting Equipment Co.	
		Paint, Paint Guns and Fittings	186 74
	2	The Barrett Co.	
		Asphalt	75 57
	6	Pay Roll	
		Aug. 29-Sept. 3	831 36
	12	Pay Roll	
		Sept. 5-10	802 65
	12	Old Colony Trust Co.	
		Retirement of Bonds, \$10,000	
		Coupons due Oct. 1, 1927, \$6,000	16,000 00
	13	Maine Central Railroad Co.	
		Freight	9 37
	13	Chadwick-Boston Lead Co.	
		Pig Lead	83 31
	13	Swift & Anderson	
		Repairing Pavement on Water St.	48 10
	13	Tracy & Metcalf	
		Labor and Material	1 15
	13	Johns Manville Inc.	
		Asphalt	21 15
	13	Darling Automobile Co.	
		Automobile Supplies	1 90
	13	Rensselaer Valve Co.	
		Valve Boxes with Lock Covers	60 00
	13	Wallace & Tiernan Co. Inc.	
		Hose Bushings	1 85

REPORT OF TREASURER

33

13	Grinnell Co.	
	Fittings	11 73
13	Hennings Motor Co.	
	Tires and Tubes	45 49
13	State Highway Commission	
	Labor	5 25
14	Purinton Bros. Co.	
	Hydrated Lime	45 50
14	Edson Mfg. Corp.	
	Force Pumps and Fittings	47 77
14	A. P. Smith Mfg. Co.	
	Inserting Sleeves and Valves	500 38
14	Central Maine Power Co.	
	Power and Lighting Service and repairing Motor	378 55
14	Brown & Wales Co.	
	Fittings and Pipe	248 98
14	W. L. Blake & Co.	
	Bell and Spigot Bends	79 17
14	Hussey Hardware Co.	
	Supplies and Gasoline	251 43
14	Brooks Hardware Co.	
	Supplies and Cement	319 15
14	Petty Cash	
	Express and Sundries	24 40
14	Pay Roll	
	Sept. 12-17	75 00
14	Augusta Lumber Co.	
	Lumber	3 78
17	Pay Roll	
	Sept. 12-17	60 00
19	Pay Roll	
	Sept. 12-17	621 96
19	Gardiner Water District	
	Use of Compressor	262 50
19	New England Tel. & Tel. Co.	
	Telephone Service	31 30
19	Standard Oil Co. of New York	
	Gasoline	204 65
19	Electro Bleaching Gas Co.	
	Liquid Chlorine	165 78
19	Ingersoll-Rand Co. of New England	
	Gaskets and Valves	18 81
19	Kennebec Oil Co.	
	Kerosene	22 50
19	H. H. Cushman	
	Cutting Brush and Burning Same at Carlton Pond	44 80
19	Edson Mfg. Corp.	
	Diaphragm	5 15
19	Chester A. Fuller	
	Safety Goggles	2 25
19	Taber & Reid	
	Sundry Expense	3 75
21	Pay Roll	
	Sept. 19-21	98 46

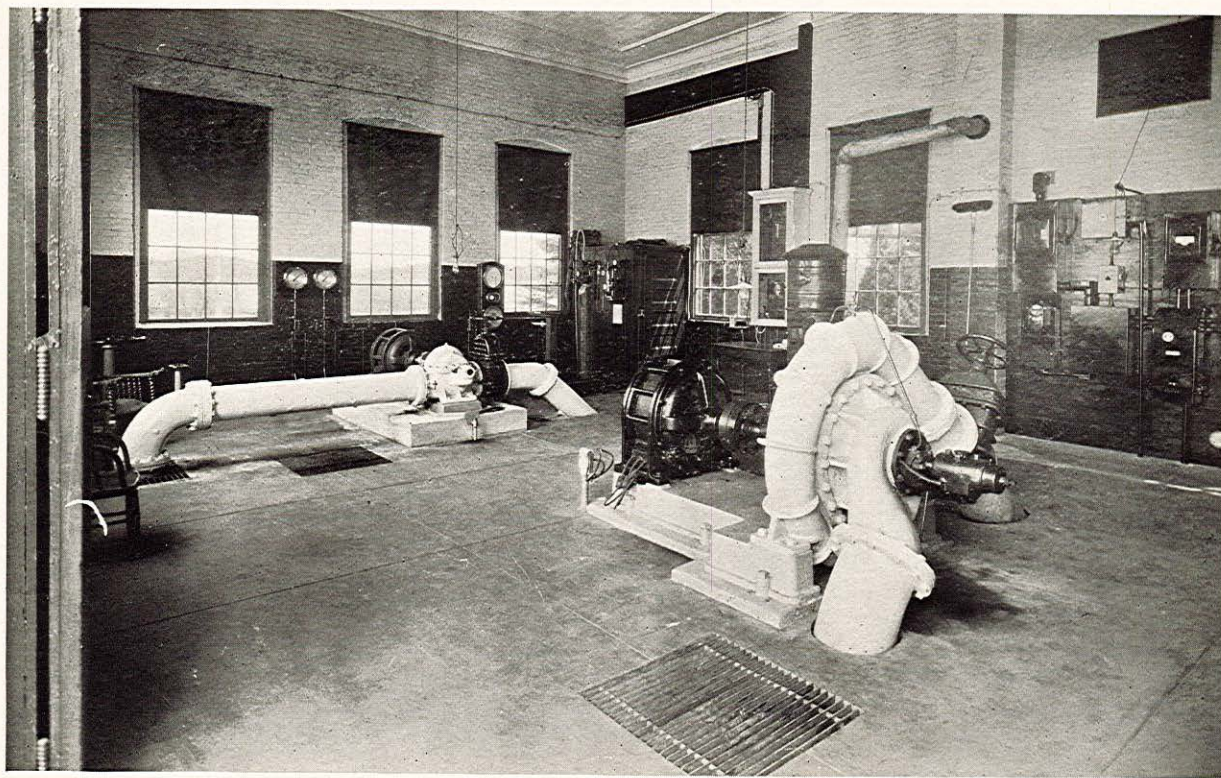
	23	Brooks Hardware Co. Cement and Supplies	1,062 61
	26	Pay Roll Sept. 19-24	416 65
	27	Petty Cash Express and Sundries	22 59
	27	Fifield Bros. Co. Supplies	5 08
	27	Tracy and Metcalf Labor and Material	4 59
	27	Minwax Co. Inc. 1 Drum heavy Waterproofing	58 80
	27	Nichols Garage Labor	6 00
Oct.	3	Pay Roll Sept. 26—Oct. 1	447 55
	5	F. E. Berry Services Blister Rust Prevention	25 20
	5	A. E. Dudley Services Blister Rust Prevention	23 60
	5	Augusta Press Shut off Notices	8 33
	5	A. P. Smith Mfg. Co. Inserting Sleeves and Valves	107 00
	5	Brown-Wales Co. Copper Couplings	6 63
	5	Cottle Bros. Crushed Stone	9 00
	5	Red Hed Mfg. Co. Tapping Machine and Parts	4 02
	6	Maine Central Railroad Co. Freight	3 84
	7	New England Tel. & Tel. Co. Telephone Service	26 90
	10	Augusta Press Water Bills	33 32
	10	Taber & Reid Valves	5 30
	10	Pay Roll Oct. 3-8	398 05
	17	Pay Roll Oct. 10-15	401 50
	18	Eagle Oil & Supply Co. Cotton Waste and Oil	98 52
	18	Worthington Pump and Machinery Corp. Pump Parts	25 00
	18	Maine Central Railroad Co. Freight	13 98
	18	Standard Oil Co. of New York Gasoline	92 70
	18	Rensselaer Valve Co. Tapping Sleeve and Valve	28 75
	18	Tensile Steel Co. Tool Steel	106 61
	20	Central Maine Power Co. Lighting and Power Service	325 74

REPORT OF TREASURER

35

24	Brown-Wales Co.	
	Pipe	584 92
24	Pay Roll	
	Oct. 17-22	422 35
31	Pay Roll	
	Oct. 24-29	427 45
31	Hussey Hardware Co.	
	Supplies	16 95
31	Rensselaer Valve Co.	
	Tapping Sleeves and Valves	239 45
31	Macomber, Farr & Whitten	
	Insurance	31 00
31	Edson Mfg. Corp.	
	Pump Parts	8 77
31	Tracy and Metcalf	
	Labor and Material	9 77
31	Brooks Hardware Co.	
	Sundries	54 62
31	Fifield Bros. Co.	
	Grease	1 84
31	Electro Bleaching Gas Co.	
	Liquid Chlorine	165 32
31	W. L. Blake & Co.	
	Pipe and Fittings	590 77
Nov. 7	Addressograph Co.	
	Repairing Addressograph	1 86
7	Pay Roll	
	Oct. 31—Nov. 5	439 95
7	Elmer E. Newbert	
	Salary	250 00
7	William D. Hutchins...	
	Salary	250 00
7	Walter S. Wyman	
	Salary	250 00
14	Red Hed Mfg. Co.	
	Fittings	102 50
14	Braman-Dow & Co.	
	Supplies	6 00
14	Augusta Press	
	Rubber Stamps	1 47
14	Purinton Bros Co.	
	Clay and Coal	34 75
14	Bradstreet Motor Co.	
	Labor and Material	1 10
14	Maine Central Railroad Co.	
	Freight	42 11
14	Meuller Co.	
	Tools	50 27
14	Brown-Wales Co.	
	Pipe and Fittings	254 80
14	New England Tel. & Tel. Co.	
	Telephone Service	29 54
14	Worthington Pump & Machinery Corp.	
	Valves	15 84
14	Hussey Hardware Co.	
	Supplies	3 66

14	Fifield Bros Co.	
	Supplies	6 47
14	Central Maine Power Co.	
	Lighting and Power Service	301 76
Nov. 14	J. H. Cogan Co.	
	Heater	406 41
14	George Fullers Sons Inc.	
	Labor and Material	13 59
14	Gardiner Motor Co.	
	Labor and Supplies	2 25
14	Kennebec Journal Co.	
	Cash Books	53 00
14	Petty Cash	
	Express and Sundries	23 64
14	J. C. Arnold, P. M.	
	Stamps	70 21
14	Pay Roll	
	Nov. 7-12	417 20
16	John Grady	
	Pipe	43 50
21	Pay Roll	
	Nov. 14-19	520 00
21	Augusta Ice Co.	
	Coal	85 00
21	Brooks Hardware Co.	
	Supplies	36 19
21	Chadwick-Boston Lead Co.	
	Pig Lead	78 03
21	McLean, Fogg & Southard	
	Legal Services	282 00
21	Wallace-Tiernan Co.	
	Chlorinator Parts	31 29
21	Kennebec Oil Co.	
	Gasoline, Kerosene and Pump	195 17
21	Augusta Press	
	Notices	8 57
21	Brown-Wales Co.	
	Fittings	18 96
21	Addressograph Co.	
	Addressograph Parts	1 36
21	Central Maine Power Co.	
	Lighting and Power Service	12 19
28	National Shawmut Bank	
	Service as paying Agent for Coupons	27 50
28	Rensselaer Valve Co.	
	Hydrant Parts	21 30
28	Brown-Wales Co.	
	Fittings	19 11
28	Braman-Dow & Co.	
	Fittings	36 05
28	George Fuller's Sons Inc.	
	Repairing Pump	26 25
28	Bradstreet Motor Co.	
	Labor and Material	10 20
28	Pay Roll	
	Nov. 21-26	437 28



SECTION OF PUMPING STATION HOUSING ELECTRIC PUMPS AND LIQUID CHLORINATOR

REPORT OF TREASURER

37

Dec.	5	Pay Roll	
		Nov. 28-Dec. 3	443 55
	5	The Arco Co.	
		Paint	6 00
	5	Crosby Steam Gage & Valve Co.	
		Charts	10 63
	5	Wallace & Tiernan Co. Inc.	
		Chlorinator Parts	34 48
	5	Standard Oil Co. of New York	
		Tank Gauge	73 00
	5	Worthington Pump and Machinery Corp.	
		Pump Parts	75 39
	5	Brown-Wales Co.	
		Pipe and Fittings	132 89
	5	Purinton Bros Co.	
		Coal	86 00
	5	Maine Central Railroad Co.	
		Freight	50
	12	Pay Roll	
		Dec. 5-10	346 05
	12	Red Hed Mfg. Co.	
		Fittings	140 00
	12	Cottle Bros.	
		Crushed Rock	6 25
	12	Central Maine Power Co.	
		Lighting and Power Service	237 35
	12	Brown-Wales Co.	
		Pipe	2,678 77
	12	Fifield Bros, Co.	
		Supplies	46 16
	12	Burroughs Adding Machine Co.	
		Care of Machine	5 55
	12	H. H. Cushman	
		Cedar Posts	18 00
	12	Newhall & Hanson Co.	
		Double Windows House at Pumping Station	40 70
	12	New England Tel. & Tel. Co.	
		Telephone Service	25 63
	12	Macomber, Farr & Whitten	
		Insurance	6 25
	12	Wesley W. Albee	
		Wood	56 00
	19	National Meter Co.	
		Meter Parts	67 48
	19	Brooks Hardware Co.	
		Nipples	1 00
	19	Tracy & Metcalf	
		Labor and Material	2 95
	19	Art Sign Co.	
		Sign	5 00
	19	Hussey Hardware Co.	
		Supplies	24 38
	19	Central Maine Power Co.	
		Lighting & Power Service	15 95
	19	Macomber, Farr & Whitten	
		Insurance	281 70

AUGUSTA WATER DISTRICT

19	Worthington Pump and Machinery Corp.	
	Parts for Pump	44 35
19	Pay Roll	
	Dec. 12-17	377 55
19	Maine Central Railroad Co.	
	Freight	1,368 63
23	Town of Readfield	
	Taxes	452 33
27	Brown-Wales Co.	
	Fittings	76 44
27	Electro Bleaching Gas Co.	
	Liquid Chlorine	164 12
27	Wallace & Tiernan Co.	
	Gaskets	63
27	Pay Roll	
	Dec. 19-24	343 35
31	Petty Cash	
	Express and Sundries	24 75
		<hr/>
Dec. 30	Cash on Hand	\$115,365 19
		22,396 38
		<hr/>
	Total Disbursements for the year	\$137,761 57

SCHEDULE D

Disbursements of Receipts from Sinking Fund

Feb.	7	First National Granite Bank	
		Augusta Water District Bonds and Interest	\$2,001 56
Mar.	1	Deposit State Trust Co.	38 35
	1	Deposit Augusta Trust Co.	924 34
	1	Deposit First National Granite Bank	75 15
April	1	Deposit Augusta Trust Co.	760 00
June	1	Deposit Augusta Trust Co.	80 22
	15	Eldredge & Co.,	
		Augusta Water District Bonds and Interest	1,014 89
Sept.	1	Deposit State Trust Co.	142 05
	1	Deposit First National Granite Bank	67 74
	1	Deposit Augusta Trust Co.	84 99
Oct.	1	Deposit Augusta Trust Co.	1,690 00
	1	Deposit State Trust Co.	72 09
Dec.	1	Deposit Augusta Trust Co.	83 58
			<hr/>
			\$7,034 96

SCHEDULE E

Statement of Sinking Fund, December 31, 1927

	Par Value	Book Value	Market Value
Augusta Water District 1934 Bonds	\$46,500 00	\$40,378-20	\$46,500 00
Augusta Water District 1953- 54-55-56 Bonds	38,000 00	^{34,087.68} 37,361-98	38,000 00
Cash in First National Granite Bank		3,455 05	3,455 05
Cash in Augusta Trust Co.		9,851 04	9,851 04
Cash in State Trust Co.		7,281 99	7,281 99
		<u>\$98,328 26</u>	<u>\$105,088 08</u>

SCHEDULE F

Additions to Sinking Fund

Sept. 12	Paid from Receipts from Operations to retire \$10,000 bonds due Oct. 1, 1927	\$10,000 00
----------	---	-------------

Respectfully submitted,

W. D. HUTCHINS,
Treasurer.

Report of the Superintendent

Augusta, Maine, January 1, 1928.

To the Trustees of the Augusta Water District:

Gentlemen:

I herewith respectfully submit my report as Superintendent for the year ending December 31, 1927.

HEIGHT OF WATER IN CARLETON POND WITH REFERENCE TO THE OLD SPILLWAY

Jan. 1.....	—3' 0"	May 1.....	—1' 11"	Sept. 1.....	—1' 10"
Feb. 1.....	—3' 2"	June 1.....	—1' 0"	Oct. 1.....	—2' 11"
Mar. 1.....	—3' 11"	July 1.....	—1' 1"	Nov. 1.....	—2' 8"
Apr. 1.....	—1' 9"	Aug. 1.....	—1' 5"	Dec. 1.....	—1' 8"
				Dec. 31.....	—0' 2"

(Note: See 1926 report for previous records)

During the year 42 new services were added making a total of 2827 now connected to the system. During the year also there were 84 renewals of service pipes of various sizes and kinds. Those renewals were made necessary by the fact that the original pipes were of galvanized iron or steel and after a period of from 15 to 20 years these pipes become clogged with rust and the water pressure falls to a very low point. Of these 126 new and relaid services 66 were laid of copper tubing, 7 of brass pipe, 20 of cement lined iron pipe, 5 of galvanized iron pipe, 5 of galvanized steel pipe and 23 of various others or combinations such as half copper and half iron, half cement lined and half iron, and some cast iron. The sizes ranged from $\frac{3}{4}$ " pipe for dwelling houses to 6" cast iron pipe for fire services in public buildings.

New services have been added in the past years as shown by the following table.

To May 1, 1904	1,486
June 1, 1905	55
June 1, 1906	43
June 1, 1907	94
June 1, 1908	61
June 1, 1909	69

June 1, 1910	81
June 1, 1911	61
June 1, 1912	73
June 1, 1913	67
June 1, 1914	61
June 1, 1915	37
July 1, 1916	62
July 1, 1917	52
Dec. 31, 1917	16
Dec. 31, 1918	23
Dec. 31, 1919	18
Dec. 31, 1920	34
Dec. 31, 1921	62
Dec. 31, 1922	66
Dec. 31, 1923	97
Dec. 31, 1924	56
Dec. 31, 1925	65
Dec. 31, 1926	46
Dec. 31, 1927	42
Total	2,827

FIRE HYDRANTS

Three hydrants have been renewed during the past year as follows:

- Cor. State & Oak, Chapman replaced by Corey
- Grove opp. Penney Memorial Church, Chapman replaced by Corey
- Stone cor. Middle, Mathews replaced by Corey

Total now connected with the system	
Public Hydrants (West side)	88
Public Hydrants (East side)	69
Private Hydrants	60
Total	217

LOCATION, MAKE & EQUIPMENT OF ALL FIRE
HYDRANTS

To December 31, 1927

No.	Location	Year	Make	Pump Hose	
				Con.	Con.
1	Northern Av. opp. Franklin St.	*	Ch	1	2
2	Franklin St. cor. Oxford St.		C	1	2
3	Washington St. cor. Franklin St.	1912	C	1	2
4	Northern Ave. cor. Jefferson St.	*	Ch	1	2
5	Northern Ave. cor. Oxford St.	*	Ch	1	2
6	Jefferson St. opp. Kendall St.	1913	C	1	2
7	Washington St. cor. Waldo St.	*	Ch	1	2
8	Northern Ave. cor. York St.	*	Ch	1	2
9	Northern Ave. cor. Mill St.	1915	C	1	2
10	Canal St. opp. Edwards Mfg. Co.		C	1	2
11	Canal St. opp. Ice House		C	1	2
12	Mill St. cor. Mt. Vernon Ave.	1912	C	1	2
13	Mt. Vernon Ave., 1000' No. of Mill St.	1924	C	1	2
14	Mt. Vernon Ave., south of Mill St.	1912	C	1	2
15	Bond St. halfway Water to M.V. Ave.	1912	C	0	3
16	Royal Park		C	1	2
17	State St. cor. Laurel St.	1915	C	1	2
18	Water St. opp. Laurel St.	1912	C	0	3
19	Water St. at Railroad Bridge		C	0	3
20	Water St. nearly opp. City Hotel	1924	C	0	3
21	Water St. cor. Bridge St.	1908	M	0	4
22	Commercial St. cor. Bridge St.	1924	C	1	2
23	Crosby St. opp. Crosby Place	1924	C	1	2
24	Bridge St. cor. State St.	1911	C	1	2
25	Bridge St. opp. Summer St.	*	Ch	1	2
26	Bridge St. opp. Winter St.	*	Ch	1	2
27	North St., cor. Bridge St.	*	Ch	1	2
28	North St. near City Farm	*	Ch	1	2
29	N. Chestnut St. halfway Bridge to Winthrop	1926	C	1	2
30	Spring St. halfway Bridge to Winthrop	1911	C	1	2

31	Elm St. halfway Bridge to Winthrop	*	Ch	1	2
32	State St. cor. Oak St.	1927	C	1	2
33	Church St. cor. Flag St.	1915	C	1	2
34	Water St. front of No. 211	*	M	0	4
35	Front St. rear of No. 211 Water St.		C	0	3
36	Oak St. halfway Water to Commercial	1912	C	1	2
37	Water St. cor. Winthrop St.	1911	C	1	2
38	Dickman St. cor. Oak St.		C	1	2
39	Winthrop St. cor. Commercial St.	1925	C	1	2
40	Water St. front of Augusta Steam Laundry	1916	C	0	3
41	Court St. cor. Perham St.	*	Ch	1	2
42	Winthrop St. cor. State St.	1924	C	1	2
43	Chapel St. cor. Winthrop St.	*	Ch	1	2
44	Sewall St. cor. Winthrop St.	1912	C	1	2
45	Sewall St. opp. Weston St.	1910	C	1	2
46	South Chestnut St. opp. Court St.	1912	C	1	2
47	Green St. opp. Cushman St.	1911	C	1	2
48	South Chestnut St. cor. Green St.	*	Ch	1	2
49	Western Ave. cor. South Chestnut St.		C	1	2
50	Sewall St. cor. Lincoln St.	1909	M	1	2
51	Lincoln St. cor. Drew Street	1924	C	1	2
52	Melville St. halfway Green to Western Avenue	1911	C	1	2
53	Chapel St. cor. Green St.	*	Ch	1	2
54	Chapel St. cor. Western Ave.	1925	C	1	2
55	State St. opp. Percy Hill residence	1923	C	1	2
56	State St. opp. Chandler St.	*	Ch	1	2
57	Grove St. opp. East Crescent St.	1927	C	1	2
58	Green St. cor. Grove St.	1914	C	1	2
59	Gage St. cor. Swan St.	*	Ch	1	2
60	Gage St. at Shoe Factory	1908	M	1	2
61	Gage St. south of Shoe Factory	1910	C	1	2
62	Child St. cor. Center St.	*	M	1	2
63	Capitol St. halfway State to Gage	*	M	1	2
64	State St. nearly opp. Child St.	1910	C	1	2
65	State St. at Augusta House	1912	C	1	2

66	Grove St. opp. Chapel St.	*	Ch	1	2
67	Sewall St. cor. Capitol St.	1910	M	0	3
68	Sewall St. south of Capitol St.	*	M	1	2
69	State St. cor. Scott St.	*	M	1	2
70	State St. north of Car Barn		C	1	2
71	State St. opp. Glenwood St.	1916	C	1	2
72	Columbia St. opp. No. 12		C	1	2
73	Chapel St. cor. Weston St.		C	1	2
74	Higgins St. at Augusta House		C	0	3
75	Western Ave. cor. Florence St.	1908	M	1	2
76	Western Ave. near Gannett's	1910	M	1	2
77	Prospect St. cor. Winthrop St.	1915	C	1	2
78	Prospect St. cor. Bennett St.		C	1	2
79	Commercial St. rear of Cony House	1912	C	1	2
80	Front St. cor. Bridge St.		C	1	2
81	Front St. at Augusta Yacht Club		C	1	2
82	Front St. rear of Masonic Temple	1906	M	0	4
83	Front St. rear of Augusta Steam Laundry	1906	M	0	3
84	Sewall St. 800' south of No. 68	1925	C	1	2
85	Sewall St. 1600' south of No. 68	1925	C	1	2
86	Winthrop Road near Macomber Farm	1925	C	1	2
87	Orchard St. cor. Western Ave.	1925	C	1	2
88	Sewall St. cor. Wade St.	1925	C	1	2
89	Sewall St. halfway Western Ave. to Capitol St.		C	1	2
90	Sewall St. halfway Jackson St. to Glenwood St.		C	1	2
91	Sewall St. south of Glenwood St.		C	1	2

EAST SIDE

101	Hospital St. cor. Gowell St.		C	1	2
102	Hospital St. south of Arsenal Grounds *		M	1	2
103	Stone St. cor. Eastern Ave.	1915	M	1	2
104	Davenport St., halfway Stone to Ballard		C	1	2
105	Ballard St. cor. Eastern Ave.		C	1	2

106	Eastern Ave. halfway Arsenal to Middle		C	1	2
107	Arsenal St. opp. Augusta Lumber Co. *		M	0	4
108	Arsenal St. cor. Eastern Ave.		M	1	2
109	Arsenal St. cor. Cedar St.		C	0	3
110	Middle St. cor. Cedar St.		C	1	2
111	Brooks St. cor. St. Catherine St.	1916	C	1	2
112	Arsenal St. cor. East Chestnut St.		C	1	2
113	Middle St. cor. East Chestnut St. *		Ch	1	2
114	Stone St. cor. East Chestnut St.	1925	C	1	2
115	Stone St. cor. Middle St.	1927	C	1	2
116	Arsenal St. south of Williams St.	1925	C	0	3
117	Williams St. cor. Howard St.	1916	C	1	2
118	Bowman St. cor. Williams St.	1916	C	1	2
119	Cony St. cor. Bowman St.		M	0	4
120	Willow St. 150' north of Cony St.		C	0	4
121	Willow St. opp. Gannett Pub. Co.	1909	M	1	2
122	Willow St. opp. Maple St. *		Ch	1	2
123	Maple St. just south of Newhall- Hanson Co.		C	1	2
124	Maple St. at Railroad Crossing	1908	M	0	4
125	Bangor St. cor. Myrtle St.	1915	C	1	2
126	Cony St. cor. Arsenal St.	1913	C	1	2
127	Cony St. cor. Gannett St.	1925	C	1	2
128	Cony St. cor. Stone St.	1916	C	0	3
129	Cony St. cor. Pearl St.	1924	C	1	2
130	Cony St. cor. Pine St. *		M	1	2
131	Patterson St. cor. South Belfast Ave. *		M	1	2
132	Patterson St. cor. Pearl St. *		Ch	1	2
133	Patterson St. cor. Gannett St.		C	1	2
134	School St. halfway Pearl to Gannett	1911	C	1	2
135	School St. 500' east of Pearl St.	1924	C	1	2
136	Bangor St. opp. School St.	1913	C	1	2
137	Pearl St. halfway Quimby to Murray St.		C	1	2
138	Murray St. east of Pearl St. *		M	1	2
139	South Belfast Ave. cor. Murray St.	1916	C	1	2
140	Bangor St. cor. Quimby St. *		M	1	2
141	Fowler St. cor. Pearl St. Extension	1923	C	1	2

142	Bangor St. cor. North Belfast Ave.	1912	C	1	2
143	North Belfast Ave. opp. Ruel St.		C	1	2
144	North Belfast Ave. west of James St.		C	1	2
145	Locke St. opp. Allen St.		C	1	2
146	Bangor St. cor. Prince St.	1910	C	1	2
147	Longwood Ave. cor. White St.		C	1	2
148	Not set				
149	Not set				
150	Not set				
151	Bangor St. cor. Clark St.	1916	C	1	2
152	Riverside Drive	1916	C	1	2
153	" "	1916	C	1	2
154	" "	1916	C	1	2
155	" "	1916	C	1	2
156	" "	1916	C	1	2
157	" "	1916	C	1	2
158	" "	1916	C	1	2
159	" "	1920	C	1	2
160	" "	1920	C	1	2
161	" "		C	1	2
162	" "		C	1	2
163	" "		C	1	2
164	" "		C	1	2
165	" "		C	1	2
166	" "		C	1	2
167	" "	1925	C	1	2
168	" "	1925	C	1	2
169	" "	1925	C	1	2
170	" "	1925	C	1	2
171	" "	1925	C	1	2
172	Not set				
173	" "				
174	" "				
175	" "				
176	" "				
177	" "				
178	" "				

179 Howard St. 400' south of Williams 1926 C 0 3

* Hydrants set previous to formation of the Augusta Water District.

C indicates Corey Hydrants

M indicates Mathews Hydrants

Ch indicates Chapman Hydrants

F indicates Fairbanks Hydrants

PRIVATE HYDRANTS

501	State St. at Car Barn		C	1	2
502	State House, West side		C	1	2
503	State House, South side	1910	C	1	2
504	Pumping Station Yard, E. Winthrop	1916	C	1	2
505	East Winthrop near A&K Substation	1924	C	1	2
506	East Winthrop opp. Walter Thurber Residence	1924	C	1	2
507	Edwards Mfg. Co. Yard				
508	" " " "				
509	" " " "				
510	" " " "				
511	" " " "				
512	" " " "				
513	" " " "				
514	Maple St. rear of Cushnoc Paper Co. *		M	1	2
515	Maple St. at office of Cushnoc Paper Co.		C	1	2
516	Maple St. North of Paper Mill		C	1	2
1-518	Arsenal Grounds near Criminal Building				
2-519	Arsenal Grounds just off 10' Main				
3-520	Arsenal Grounds, south of Pavilion				
4-520	Arsenal Grounds, North of Burleigh Pavilion				
533-536	Maine Insane Hospital Grounds				
539-563	National Soldiers Home Grounds, Togus				

PUMPING STATION

The steam pump connected with Lake Cobbosseecontee has not been run since March 31st, 1912. All water used since that date has been drawn from Carleton Pond. During the past Fall however the steam pump has been thoroughly overhauled and placed in good running condition and the boiler has been tested and inspected. There is also a fair supply of coal in the yard so that in case of a serious drought or failure of the suction pipe line from Carleton Pond the City will have a sufficient supply of water of good quality.

It is expected that the new DeLaval electric centrifugal pump ordered in December will be installed this Spring to increase our pumping capacity to nearly five million gallons per day. This pump will replace the smaller of the two present pumps and the larger will be rebuilt to obtain higher efficiency.

AVERAGE DAILY CONSUMPTION OF WATER IN THE PAST

*Feb.	15, 1910	to	June	1, 1910	2,035,755	Gallons
June	1, 1910	to	June	1, 1911	2,287,945	"
June	1, 1911	to	June	1, 1912	2,103,770	"
June	1, 1912	to	June	1, 1913	1,895,315	"
June	1, 1913	to	June	1, 1914	1,992,712	"
June	1, 1914	to	June	1, 1915	1,870,411	"
June	1, 1915	to	July	1, 1916	1,971,262	"
July	1, 1916	to	July	1, 1917	2,052,600	"
July	1, 1917	to	Dec.	31, 1917	1,975,978	"
Jan.	1, 1918	to	Dec.	31, 1918	2,086,301	"
Jan.	1, 1919	to	Dec.	31, 1919	2,066,600	"
Jan.	1, 1920	to	Dec.	31, 1920	2,245,000	"
Jan.	1, 1921	to	Dec.	31, 2021	2,299,780	"
Jan.	1, 1922	to	Dec.	31, 1922	2,200,932	"
Jan.	1, 1923	to	Dec.	31, 1923	2,339,940	"
Jan.	1, 1924	to	Dec.	31, 1924	2,409,864	"
Jan.	1, 1925	to	Dec.	31, 1925	2,388,801	"
Jan.	1, 1926	to	Dec.	31, 1826	2,951,150	"
Jan.	1, 1927	to	Dec.	31, 1827	2,635,000	"

*(Feb 15, 1910: 24 x 9 Venturimeter installed on this date)

24 x 9 VENTURIMETER RECORD

Jan.	1, 1927	1,719,380,000	Reading
Dec.	31, 1927	2,584,970,000	Reading
		961,900,000	Gallons for year
		2,635,000	Average per day

MONTHLY CONSUMPTION OF WATER

1927	Hours pumped	Gals. pumped	Hours gravity	Gallons gravity	Monthly consumption	Daily average	KWH used
Jan.	672.5	91.6M	71.5	4.71M	96.31M	3,106,741	21,190
Feb.	651.5	86.055	20.5	1.085	87.14	3,112,143*	18,720
Mar.	733.75	90.47	10.25	.65	91.12	2,939,354	18,850
Apr.	591.5	70.76	128.5	8.5	79.26	2,642,000	14,390
May	321.25	44.58	422.75	27.11	71.69	2,312,580	10,410
June	327.0	45.82	393.0	26.51	72.33	2,411,000	9,980
July	403.5	56.27	340.5	22.87	79.14	2,552,000	11,680
Aug.	442.0	60.32	302.0	20.60	80.92	2,603,677	12,721
Sept.	463.75	63.83	256.25	17.41	81.24	2,708,000	14,321
Oct.	487.0	66.61	257.0	16.30	82.91	2,674,000	15,024
Nov.	381.75	52.25	338.25	22.49	74.74	2,491,333	11,765
Dec.	234.75	32.08	509.25	33.02	65.10	2,100,000†	7,817
Totals for the year	5,710.25	760.645	3,049.75	201.255	961.90	2,635,342	166,868

M—Millions of Gallons

*—Highest Month

†—Lowest Month

DISTRIBUTION PIPES AND GATES LAID TO DEC. 31, 1927

Streets	Length and Size of Cast Iron Pipe													Galv. Pipe		Gates Set										
	24"	20"	16"	12"	10"	8"	6"	4"	2"	1 1/4"	1"	3/4"	24	20	16	12	10	8	6	4	2	1 1/4	1	3/4		
Carleton Pond Intake																										
Carleton Pond to Pumping Station		500																								
Pumping Sta. Yard	30	191				32																				
Cobbosseecontee Intake	2533																									
Pumping Sta. to Reservoir	31292																									
By-Pass at Reservoir	560	502	42	28									5													
Blow Offs													3	1	1	1										
Allen Street							425			510																
Amherst St.							584			167																
Arsenal St.					2832		2632																			
Arsenal Grounds									1001																	
Bangor St.							3498																			
Ballard St.							230																			
Belfast Ave. North							2518			1100	740															
Belfast Ave. South							1375			45																
Bennett St.					400																					
Bond St.																										
Bowman St.							464																			
Bradbury St.				600			450																			
Bridge St.				2300	228		313			53																
Brooks St.							450			230																
Burleigh St.																										
Capitol St.					954					170																
Capitol St. to Child St.							2100			790		110														
Canal St.																										
Cedar St.																										
Center St.										1292																
Chapel St.										300																
Charles St.							1773			275																
Charles St. East							131																			
Chestnut St. North																										
Chestnut St. South							712																			
Child St.							1774																			
Church St.							100			650																
Church St.							342			20																
Columbia St.							262			532																
Clark St.																										
Congress St.										380																
Cony St.							390																			
Coughlin						1803	1459																			
Court Ave.										300																
										130	150															

Streets	Length and Size of Cast Iron Pipe										Galv. Pipe			Gates Set												
	24"	20"	16"	12"	10"	8"	6"	4"	2"	1 1/4"	1"	3/4"	24	20	16	12	10	8	6	4	2	1 1/4	1	3/4		
Court St.							687			1460									4							
Court St. Place										281													1			
Crescent St. East										469																
Crescent St. West										400																
Crosby Place							279												1							
Crosby St.										650													1			
Crosby St. Place										107																
Cross St.										250																
Crooker St.										177																
Cumberland St.										540																
Cushman St.							850												3							
Cushnoc Paper Co. Yard							327																			
Dayton St.										261																
Davenport St.							985													1						
Dickman St.							304													1						
Drew St.										860																
Eastern Ave.									1305											2						
Edwards Co. Yard				450		520	720			638										1						
Elm Ave.							50			400																
Elm St.							660													2						
Fairfield Ave.										337																
Federal St.										500																
First Ave.							90													2						
Flagg St.										260		115														
Flagg St. Place											130															
Florence St.										733																
Franklin St.							1400													1						
Front St.						1356	318																			
Forest Grove Cemetery										1349		550	90							1						
Fowler St.							535																			
Gage St.							1460	405												1						
Gannett St.										960																
Gannett Place										260																
George St.							184																			
Green St.							675	2325												1						
Greenleaf St.										630																
Grove St.							200	2637												7						
Glenwood St.										490																
Grand St.										290																
Gilman St.							403																			
Hartford Square										62																

Streets	Length and Size of Cast Iron Pipe							Galv. Pipe				Gates Set													
	24"	20"	16"	12"	10"	8"	6"	4"	2"	1 1/4"	1"	3/4"	24	20	16	12	10	8	6	4	2	1 1/4	1	3/4	
Hydrant Branches.....							1978																		
High St.....							423		386										1						
Hospital St.....					2833		3888		500										1						
Howard St.....							387		324										2		1				
Hichborn.....							350												1						
Higgins.....									270												1				
Hghland Ave.....									750												1				
Hillcrest Ave.....									200																
Hillcrest St.....									700													2			
Hillcrest Place.....									200																
James St.....									83												1				
Jackson St.....									346		60										1				
Jefferson St.....							308		740										1						
Johnson St.....									380																
Kendall St.....									560												1				
Lambard Court.....									225																
Laurel St.....									330													1			
Laurel St. to Morton Place.....									144													1			
Lincoln St.....							350		1215										1		5				
Linden St.....									368												1				
Locke St.....							856														1				
Longwood Ave.....							820														1				
Maine St.....						340															1				
Manley St.....									409																
Maple St.....							2157												3						
Melville St.....							839		257		93								2		1				
Middle St.....							1783		350										3		2				
Mill St.....							780												1						
Morton Place.....									235													1			
Mount Vernon Ave.....							1320		2475										2		4				
Murray St.....							220		1237										1		1				
Myrtle St.....						839			837										1		1				
Munroe St.....									1250													2			
Newland Ave.....									560													1			
North St.....				1400					38							2					1				
North St. Place.....									398													1			
Northern Ave.....						900	2068		1620										1	2		1			
Noyes Place.....									520														1		
North Belfast Ave. Place.....									188														1		
North St. to Reservoir.....				1425																	1		1		
Oak St.....							356														1				

Streets	Length and Size of Cast Iron Pipe													Galv. Pipe				Gates Set										
	24"	20"	16"	12"	10"	8"	6"	4"	2"	1 1/4"	1"	3/4"	24	20	16	12	10	8	6	4	2	1 1/4	1	3/4				
Orchard St.							200																					
Oxford St.									1499																			
Park St.									295																			
Page St.									650																			
Patterson St.							2278												7									
Pearl St.						428	710		510										5									
Perham St.									484																			
Pine St.											351																	
Pinehurst St.							.24												1									
Pike St.									718																			
Pleasant St.									828																			
Powhatten									193		262																	
Prince St.									311																			
Prospect St.						910											1											
Purinton Ave.									364																			
Quimby St.									600		1000																	
Reservoir Line			3762													2												
Reservoir Blow Off				177													1											
River Lines			1400			828										2												
Ryan Court									160																			
Riverside Drive							21350												11									
Riverton St.							250		220										1									
River St.									425																			
Royal Park							944																					
Ruel St.									316																			
School St.							1500		126																			
Scott St.									460																			
Second Ave.							450																					
Sewall St.				1080		1450	5660		1350								2											
Sewall to Jackson St.									165																			
Spring St.							694																					
Spruce St.									620																			
State St.				94		4077	6960																					
State House Grounds							680																					
St. Catherine St.									176																			
Stewarts Lane									170																			
Stone St.						2766	65																					
Stone St. Place									395																			
Sturgis Lane																												
South St.							428																					
Spaulding St.									222																			

Streets	Length and Size of Cast Iron Pipe								Galv. Pipe				Gates Set												
	24"	20"	16"	12"	10"	8"	6"	4"	2"	1 1/4"	1"	3/4"	24	20	16	12	10	8	6	4	2	1 1/4	1	3/4	
Summer St.									720																
Swan St.						591	489											1	2						
School St. Place									200																
Taylor St.							600		20										1						
Togus Lines					1011	28533												5							
Togus Grounds					566	1041	6538	1401	60								1	1	12	2					
Togus Road									935																
Union St.							300		205										1						
Valley St.									350																
Waldo St.												100													
Wabon St.							485		70										1						
Washington St.							1674		220										1						
Washington St. Place									163																
Water St.			1425	3350																					
Webber and Gage Yard							322												1						
Western Ave			7723	2270			4490												12						
Weston St.						400	50		958									1	1			2			
Williams St.						550													1						
Willow St.			930				1200													4					
Winter St.									665																
Winthrop Court.									490																
Winthrop St.						1028	2811												1	9					
Wyman Court									218																
Wyman St.									450			87													
York St.										167															
Young St.									150																
	34,415	12,225	15,282	14,128	14,177	43,460	118,564	2,807	56,005	1,187	2,541	377													

TOTAL PIPE

Cast Iron 255,058' or 48.31 Miles

Galv. Iron 60,110' or 11.38 Miles

Total 315,168' or 59.69 Miles

Distribution Gates 431 All Sizes

Hydrant Gates 157 6"

Total 588

SUMMARY OF STATISTICS

WATER SUPPLY

POND

In Place	Ser- vices	Hyd- rants	Street Mains Extended	Street Gates	Gals pumped Cobbossee Millions	Gals pumped Carleton Millions	Total Gals Millions	Daily Av. for year Millions	High Point	Low Point
June 1, 1906	1584	151	41.234 mi.	210						
Added to June 1, 1907	94	0	1.15	6		178.039				
Added to June 1, 1908	61	12	.85	5		13.229				
Added to June 1, 1909	69	1	.69	16		523.780		+0' 1/2"	-6' 6"	
Added to June 1, 1910	81	4	.98	15		453.958		+0' 0"	-5' 11"	
Added to June 1, 1911	61	0	.48	11	138.83	696.27	835.1	+2' 7"	-10' 5"	
Added to June 1, 1912	73	1	.65	11	304.45	465.53	769.98	+0' 9"	-10' 0"	
Added to June 1, 1913	67	0	.54	12		691.79	691.79	+1' 10"	-3' 3"	
Added to June 1, 1914	61	1	.70	3		727.34	727.34	+2' 10"	-1' 6"	
Added to June 1, 1915	37	2	1.19	15		682.70	682.70	+1' 5"	-4' 4"	
Added to July 1, 1916	62	7	.85	17		780.62	780.62	+2' 2"	-2' 7"	
Added to July 1, 1917	52					749.00	749.00	+2' 2"	-0' 6"	
Added to Jan. 1, 1918	16					721.00	721.00			
Added to Jan. 1, 1919	23					761.00	761.00			
Added to Jan. 1, 1920	18					754.00	754.00			
Added to Jan. 1, 1921	34					820.00	820.00			
Added to Jan. 1, 1922	62					840.00	840.00			
Added to Jan. 1, 1923	66					803.00	803.00	+2' 0"	-5' 11"	
Added to Jan. 1, 1924	97					854.00	854.00	+2' 9"	-3' 1"	
Added to Jan. 1, 1925	56	31				879.00	879.00	+2' 2"	-4' 6"	
Added to Jan. 1, 1926	65	10	7.696	206		871.91	871.91	+0' 0"	-5' 10"	
Added to Jan. 1, 1927	46	1	1.97	41		1077.27	1077.27	+0' 10"	-4' 3"	
Added to Jan. 1, 1928	42	0	.67	36		961.90	961.90	-0' 2"	-3' 11"	
Totals	2827	217	59.69	588						

REPORT OF SUPERINTENDENT

MAINS REMOVED AND REPLACED BY LARGER SIZE

Royal Park	370' 6"	pipe	replaced	370' 2"	pipe
Linden Street	168' 2"	pipe	replaced	168' 1"	pipe
Gage Street	405' 4"	pipe	replaced	405' 2"	pipe
Patterson St.	478' 6"	pipe	replaced	478' 2"	pipe

NEW GATES INSERTED IN MAINS

In accordance with a recommendation made in 1925 by Metcalf & Eddy, Consulting Engineers, there have been inserted in mains about the city gates in the following locations and sizes.

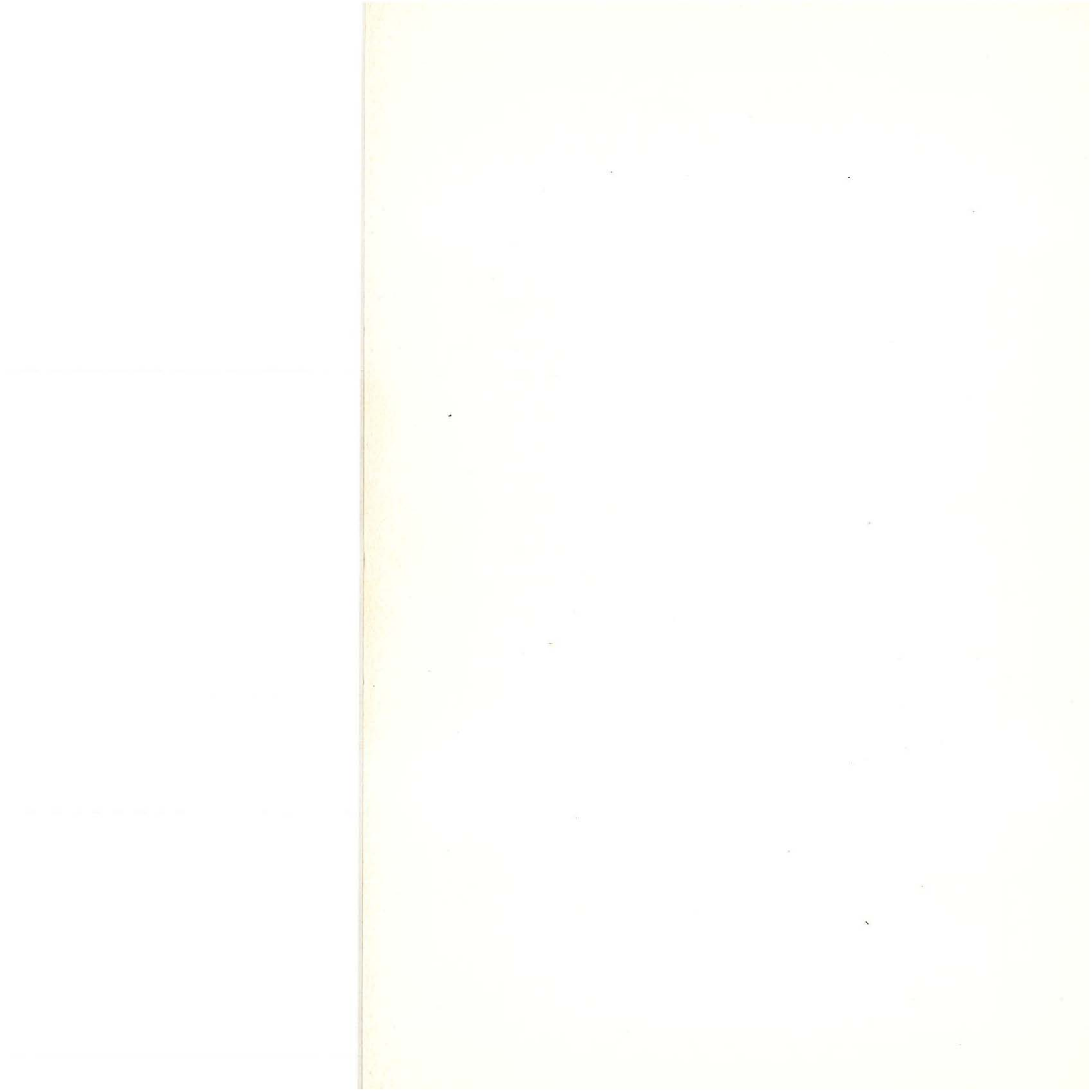
Location	Number	Size
Capitol near Gage	2	6"
Chapel cor. Green	1	6"
Elm cor. Winthrop	1	6"
Green cor. Chapel	2	6"
Green cor. So. Chestnut	1	6"
Melville cor. Green	1	6"
No. Chestnut and Winthrop	1	6"
Sewall cor. Green	2	6"
So. Chestnut and Green	1	6"
Spring cor. Winthrop	1	6"
Winthrop cor. Elm	1	6"
Murray cor. Pearl	1	6"
Patterson cor. Gannett	2	6"
Pearl cor. Quimby	1	6"
Quimby cor. Pearl	1	6"
School cor. Pearl	1	6"
State cor. Green	1	8"
State cor. Winthrop	1	8"
Stone cor. Middle	1	10"
North cor. Bennett	1	12"

REMAINING TO BE PLACED IN 1928

Location	Number	Size
Bond cor. State	1	6"
Arsenal cor. Howard	1	6"
Bangor cor. N. Belfast	1	6"
Bangor cor. Myrtle	1	6"
Franklin cor. Oxford	2	6"
Green cor. S. Chestnut	1	6"
Sewall cor. Western Ave.	1	6"
Western Ave cor. Cushman	1	6"
Eastern Ave cor. Middle	2	6"
Riverside Drive cor. Highland Ave.	2	6"
State cor. Capitol	1	6"



ARSENAL STREET FRONT OF SHOP AND GARAGE BUILDING SHOWING AUTOMOBILE EQUIPMENT



These gates are set by improved machinery recently purchased by the District, in order to give more complete control over the distribution mains, and to make it possible to divide the city into smaller districts, reducing the number of customers who would be without water in case of trouble in any particular section. It also adds to the safety factor in fire protection by keeping hydrants in service which might before have been deprived of water in case of a serious break in a main pipe.

PIPE LAID IN 1927

Street	Length and size of pipe laid	Gates set	Total Cost	Cost per Foot
Bypass, cor.				
Cony and Stone	65' 6"	2 6"	\$292.60	\$4.50
Gage Street	405' 4"	1 6"		
	62' 2"	1 2"	752.48	1.61
Hillcrest St.	388' 2"	1 2"	209.50	.54
Linden Street	168' 2"	1 2"	173.61	1.03
Lincoln Street	205' 2"	1 2"	186.04	.91
Middle Street	815' 6"	2 6"	1,689.06	2.07
N. Belfast Ave.	408' 6"	2 6"	969.43	2.37
Patterson St.	478' 6"	1 6"	906.05	1.89
Royal Park	370' 6"		663.65	1.79
Stone St. Place	187' 2"		145.64	.78

BRIEF ABSTRACTS FROM HISTORY OF THE
AUGUSTA WATER DISTRICT

1903 to 1906

Serious typhoid epidemic caused by Kennebec River water. As a result the Augusta Water District was formed by an act of the Legislature in 1903. May 16, 1904, the final papers of transfer of the property from the Augusta Water Company to the Augusta Water District were passed.

Many sources of supply were considered and the choice was finally made of Carleton Pond in Winthrop and Readfield because of its exceptional purity and situation high above the city permitting the greater part of the water to be delivered without pumping.

During the years 1905 and 1906 the District constructed the Carleton Pond dam, intake, gate house, and a cast iron

pipe line from Carleton Pond to the existing reservoir near the city farm, a distance of about eight miles. Also there was erected a pumping station in East Winthrop on the shores of Cobbosseecontee. In this station is a steam pump connected so as to take water from Cobbosseecontee and deliver it to the city, also two electric pumps, with a combined capacity of about three and one half million gallons per day, drawing water from Carleton Pond.

During these years many extensions and improvements in the distribution system in the city were made.

The new pumping station was placed in operation Jan. 19, 1906, drawing water from Cobbosseecontee. On that date the electric pumps started drawing from Carleton Pond. These two pumps have supplied virtually all the water that has been pumped since that time.

1907

16" Main laid in Water Street.

10" Main laid in Bridge, Cony & Stone Streets.

10" Main laid on Kennebec Bridge in addition to the one already in service there.

16" and 20" Suction line removed from Kennebec River.

1908

10" Main laid in Hospital St. from Cony St. to boiler house at State Hospital.

Overflow placed in reservoir embankment.

900' of 6" Main laid in Western Ave.

1910

Venturi Meter Tube installed at Pumping Station.

1911

Carleton Pond almost dry, being 10' 5" below the spillway. Necessary to pump from Cobbossee for nearly two months.

Concrete floor placed in pumping station after digging cellar.

1912

Carleton Pond again almost dry, being 10' 0" below the spillway. Pumped from Cobbossee from Oct. 26, 1911, to March 31, 1912. The Cobbossee pump has not been operated since that date.

All services removed from the 12" main in Water St., from Bridge St. south and new mains laid in Commercial and Front Sts. to supply buildings on Water St. This was done because of the laying of the concrete paving in Water St.

1913

12" Main laid from Water St. at Court, up Court to Bradbury and along Bradbury to Grove St. removing the main in Water St. from the Steam Laundry to the top of Rines Hill. This was done when the new railroad cut was made.

Reservoir bottom and sides lined with concrete to facilitate cleaning.

1915

Spillway at Carleton Pond raised two feet in October 1914. Carleton Pond fenced south of Readfield Road. New grading placed on road to the gate house at the pond.

Old railroad bridge purchased and 16" main laid thereon from Water Street across the river to Willow Street and to Cony St.

1340' of 10" main laid in Bennett St. and Prospect St. from North to Winthrop.

1916

Connection made with the Hallowell system for the purpose of supplying them with water in part.

1923

Chlorinator installed at pumping station.

1924

Engineer's survey of the condition of the physical condition of the system made by Metcalf & Eddy of Boston.

1925

Start on carrying out recommendations made by Metcalf & Eddy. 16" pipe laid from north of Winthrop Road across Macomber Farm to Western Ave. to Gannett's; 12" pipe laid from Gannett's down Western Ave. to Sewall, down Sewall to Capitol, down Capitol to State and down State to the Augusta House. One mile of 6" pipe laid to Vassalboro line in Riverside Drive.

Reduction in rates from \$6 to \$5 in first faucet charge. New buildings erected as follows: residence for pumping station operator at East Winthrop, new shop, garage, and storeroom building on Arsenal St., and new office building on Williams St.

Charter amended to permit issuing of more bonds.

Continuation of tree planting at Carleton Pond.

Purchase of additional land at Carleton Pond to protect water shed from pollution.

1926

Continuation of improvement program by inserting valves and enlarging mains in various parts of the city.

Start and completion of new concrete lined reservoir adjoining old one. This new reservoir has a capacity of ten million gallons of water which with the old one of six million gallons capacity gives the city about eight days storage of water close by.

Issue of \$300,000 of Extension and Improvement Bonds.

1927

Steam pump connected with Cobbossee overhauled and placed in condition for emergency use in case of necessity.

New electrically driven pump of a capacity of four million gallons per day contracted for to be installed in the Spring.

Start of work of laying permanent mains and service pipes in Western avenue in advance of permanent paving.

CONDITION OF THE PROPERTY OF THE DISTRICT CARLETON POND

During the year there were set out about 5000 three-year-old Norway Spruce transplants in the former pastures about the water shed. It is planned to set out the same number of spruce this year and in addition about 5000 white pine transplants. This policy if continued will soon complete the work and there will be growing timber on the entire water shed of the pond. This will tend to prevent pollution and conserve water, giving a more even runoff of rainfall. The dam and gate house are in good condition and will require no attention of consequence this year.

PUMPING STATION

The building is in good condition after minor repairs and painting which has been done during the past summer. A new and larger pump will be installed in the Spring which will give a good reserve pumping capacity and allow the rapid refilling of either reservoir after cleaning, and provide for greatly increased consumption for many years to come. The grounds are kept in excellent shape and the addition of a sign of generous proportions lets it be known to the travelling public that the property is owned by the District.

SUPPLY LINE

No leaks or trouble of any sort have developed during the past year on the line of the aqueduct. The brush and small trees were cleared from the right of way during the Fall which minimizes the danger of roots getting under the pipe and throwing it out of line. This should be done at least every five years.

RESERVOIRS

The old reservoir remains faithful to its duty and has given us no trouble. The new one built in the summer of 1926 developed a serious leak during January and was not put into

service until last Fall after extensive repairs and improvements had been made. No future trouble from this source is anticipated.

DISTRIBUTION MAINS

No leaks of consequence have developed during the year. No broken pipes have been discovered and only one or two leaky joints which have been repaired quickly with no damage to the streets or surrounding property. Several needed additions and enlargements have been made and new gates inserted where necessary.

ADMINISTRATION BUILDINGS

The building housing the shop, garage and storeroom is in the best of condition and the equipment therein is in good working order. A good stock of supplies and repair parts is kept on hand for emergencies which enables us to assist neighboring water districts in case of trouble, in addition to caring for our own needs. The five automobiles and trucks owned by the District are kept in good order and ready to respond to any call for service.

The office building adjoining the shop is in good shape and provokes much favorable comment due to its unusual design and to the appearance of the surrounding grounds which are kept trimmed neatly. Some shrubbery has been set out and climbing vines started on the walls of both buildings which in later years will add to their appearance.

Preparations have been made to strengthen and renew the service pipes on Western Avenue. This work will be done to obviate the necessity of digging up the permanent paving which it is expected will be laid there during the coming summer. All services will be relaid from the main to the street line with copper or brass pipe, depending on the size necessary; new services will be laid to the street line at vacant lots for future building operations, 6" cast iron pipe will replace all 2" iron pipe now within the limits of Western Avenue and gate

valve boxes will be raised to conform with the grading of the new pavement. All this will be done in advance of the paving operations and it is hoped that no digging will have to be done on the avenue for many years, thus preserving the surface unbroken and smooth.

Respectfully submitted,

SIDNEY S. ANTHONY,

Superintendent.