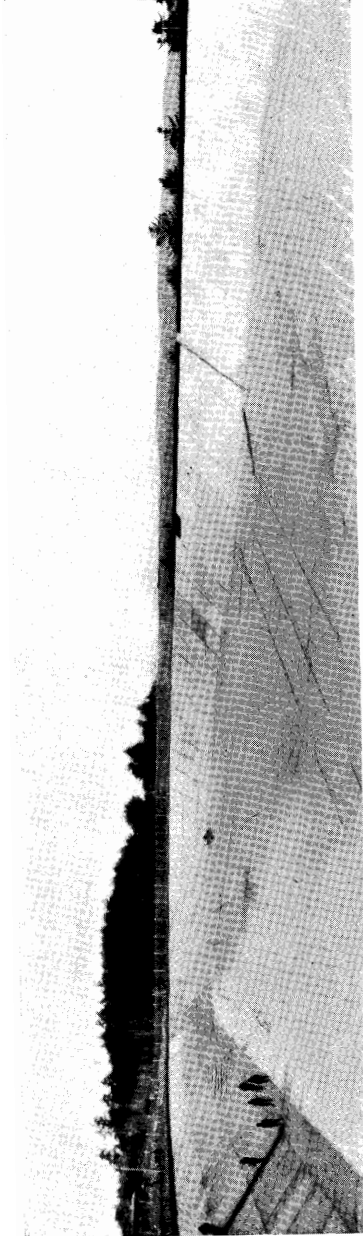


CONSTRUCTION OF NEW RESERVOIR BEGUN MAY 26, 1926



RESERVOIR NEARLY COMPLETED NOVEMBER 28, 1926

Twenty-second Annual Report

of the

Trustees and Officers

of the

Augusta Water District

for the

Year Ending December 31, 1926

Printed by
The Augusta Press
Augusta, Maine

OFFICERS
AUGUSTA WATER DISTRICT

Trustees

WILLIAM D. HUTCHINS	Term expires 1927
WALTER S. WYMAN	Term expires 1928
ELMER E. NEWBERT	Term expires 1929

President

ELMER E. NEWBERT

Treasurer

WILLIAM D. HUTCHINS

Clerk

WALTER S. WYMAN

Superintendent and Engineer

SIDNEY S. ANTHONY

Foreman

JOHN H. ELLIS, Jr.

Trustees of the
Augusta Water District
since Organization

George E. Macomber	1903 to 1924 (Resigned)
John F. Hill	1903 to 1912 (Died Mar. 16, 1912)
Thomas J. Lynch	1903 to 1916 (Died April 16, 1916)
Robert Morang	1912 to 1919
Percy V. Hill	1916 to 1924 (Resigned)
Frederick W. Plaisted	1919 to 1923 (Resigned)
Robert Morang	1923 to 1924 (Resigned)
Walter S. Wyman	1924—
Elmer E. Newbert	1924—
William D. Hutchins	1924—

Trustees' Report

The Trustees of the Augusta Water District herewith submit their 22nd annual report, covering the fiscal year ending December 31, 1926.

No community enjoys a greater benefit than the sufficiency and purity of its water supply. Nor is any other necessity of life so cheaply brought to the consumer as the water which flows through the water tap in a well maintained system.

PROGRAM OF EXTENSION AND REENFORCEMENT

During the year Augusta's excellent water system has been further strengthened and improved to meet the increasing demands upon it.

In addition to the regular work of maintenance, the District undertook the completion of the plan of extension and reenforcement outlined in a survey by Metcalf & Eddy in 1925, the larger part of such improvement having been made in that year.

This work was earnestly prosecuted during the summer and was ended only by the approach of winter. The few remaining items in the general plan left unfinished will be taken up early next summer. When completed, the distribution system of the Augusta Water District will be in a condition to meet every requirement upon its service.

NEW RESERVOIR

The outstanding accomplishment of the year was the building of the new 10,000,000 gallon reservoir. The description of the reservoir and its construction is fully covered in the report of Superintendent Anthony and need not be restated.

The reservoir was built after plans and specifications by Metcalf & Eddy of Boston and the supervision of the work was under the direction of this well known firm of Hydraulic Engineers. Bids for the construction of the reservoir were called for by public notice early in May, and the contract was let to Wyman & Simpson, of Augusta and Waterville, June 3, 1926, for \$114,528.00, this Company being the low bidder in a list of seven. Construction was begun prior to the execution of the contract May 25th, and was practically finished when work was suspended December 4th. Some grading and the seeding of the slopes will be done in the spring. Water was let into the big bowl for the first time November 28th.

The illustrated pages give some idea of the magnitude of the undertaking which transformed a pasture hillside into a big storage reservoir.

The District now has a storage reservoir capacity of 16,000,000 gallons. This is a supply for at least six days which is a necessary margin of safety against a possible break in the pipe line from Carleton Pond or a serious damage to the pumps at the East Winthrop Pumping Station.

BOND ISSUE

The cost of the program of extension and reenforcement of the distribution system, the erection of new buildings and the construction of the new reservoir has been financed by an issue of \$300,000 Extension and Improvement Bonds, dated October 1, 1926, and payable \$10,000 on October 1st in each of the years 1927 to 1956, both inclusive. These Bonds are in coupon form in denomination of \$1,000 each, bearing interest at the rate of 4% per annum, payable semi-annually on the first days of April and October, both principal and interest payable at the Old Colony Trust Company in Boston, Massachusetts. Bids were called for under date of October 11, 1926, and the whole issue was sold to Harris, Forbes & Company for 98.321 and accrued interest, acceptance of this bid being of October 25, 1926. October 26th, Harris, Forbes & Company

sold back to the Augusta Water District \$38,000 of these Bonds for our Sinking Fund at the bid price for the whole issue of 98.321.

WESTERN AVENUE

The long discussed question of getting water to Western Avenue has been seriously faced and progress has been made.

In addition to the outline plan of Metcalf & Eddy, 1130 feet of 6" main was laid on Western Avenue west of the new 16" main put in in 1925. This extension cost \$3,197.75 or \$2.83 a foot.

SINKING FUND

The Sinking Fund of the District now stands at \$244,326.20. With the exception of cash on deposit in Augusta Banks amounting to \$19,588.02 the Sinking Fund is invested entirely in Bonds of the District, \$29,000 par value of miscellaneous securities having been sold to Harris, Forbes & Company October 27, 1926.

SECURITIES SOLD TO HARRIS, FORBES & COMPANY ACCOUNT SINKING FUND

- \$10,000 New York, New Haven & Hartford R.R. Co. 3½'s due April 1, 1954, at 65 and interest
- 5,000 American Tel. & Tel. Co. Bol. Trust 5's due December 1, 1946, at 101¾ and interest
- 5,000 City of Toronto 6's due July 1, 1935, at 104½ and interest
- 5,000 United States Fourth Liberty Loan 4¼% due 1938, at 102 14-32
- 1,000 City of Augusta refunding 4's, due February 15, 1939, at 98¾ and interest
- 3,000 City of Beverly 4% Sewerage Bonds, due April 1, 1931, at 98½ and interest

NEW SUPERINTENDENT

Wesley W. Albee after a long service as Superintendent, resigned November 20, 1926, his connection with the District ending on that date.

Sidney S. Anthony of Manchester, N. H. for several months resident engineer in Augusta for Metcalf & Eddy of Boston, and representing their interest in the construction of the new reservoir, was appointed Superintendent to succeed Mr. Albee, for six months ending May 1, 1927.

Mr. Anthony has enjoyed a varied engineering experience since his graduation from the Engineering Department of Northeastern University in 1925.

During the World War he served in the Navy for about two and a half years. He is a member of Theta Chi fraternity, the Boston Society of Civil Engineers, the American Society of Civil Engineers and the American Legion. He is 28 years of age, was born in Providence, Rhode Island, and attended New Hampshire University prior to entering Northeastern University.

METERS

During the year all public and commercial buildings and industrial plants heretofore paying a flat water rate were ordered metered. This is in line with the best practice and a further step in the direction of conserving our water supply.

The Trustees are not disposed at the present time to attempt to meter domestic services. This is the tendency, however, among water Companies and water Districts, for it is well known that the flat rate encourages enormous waste.

SAVING TO WATER CUSTOMERS

Reduction in water rates effective March 1, 1926, reduced the annual water revenue of the District a number of thousand dollars. The customer, however, profits and this is as it should be. It will continue to be the policy of the Trustees to cut

water rates whenever this can be done without impairing a high standard of service.

In October the Trustees voted another saving to water takers. This relates to the cost of putting in service pipes. Formerly the customer paid the whole cost of the service entering his premises from the street main. The action of the Trustees limits this cost to that portion of the service between the premises served and the street line. This means a positive saving to the customer who puts in a new service or relays an old one, and a consequent loss to the District of several thousand dollars annually.

TREE PLANTING

Continuing the policy of planting the watershed of Carleton Pond to trees, the District set out 10,000 white pine and spruce this year. If this plan of planting 10,000 trees yearly is persisted in, the time is sure to come when that part of the watershed owned by the District and now consisting of about 900 acres will be entirely covered with growing spruce and pine—certainly an ideal setting for our water supply.

THE MERROW FARM

As a further protection to Carlton Pond, the District has acquired by deed, dated July 3, 1926, the George W. Merrow farm of about 136 acres, situated in East Readfield and long believed to be a possible source of pollution of our supply. The cost of the farm and buildings was \$4,500.

Respectfully submitted,

ELMER E. NEWBERT
WILLIAM D. HUTCHINS
WALTER S. WYMAN

Trustees

Auditor's Report

Augusta, Maine, January 26, 1927.

The Board of Trustees,
Augusta Water District,
Augusta, Maine.

Gentlemen:

I have made an examination of the accounts of the Augusta Water District for the calendar year ending December 31, 1926 and present herewith the following statements:

- Schedule 1. Statement of Assets and Liabilities as of December 31, 1926.
- Schedule 2. Detail of Assets and Liabilities as of December 31, 1926.
- Schedule 3. Statement of Income and Expense for year 1926.
- Schedule 4. Statement of Cash Receipts and Cash Expenditures for the year 1926.
- Schedule 5. Comparative Statement of Assets and Liabilities December 31, 1925 and December 31, 1926.

CERTIFICATE

I certify that I have made an examination of all accounts representing cash and securities as of December 31, 1926, either by physical examination of such assets or by obtaining certifications of depositaries as to their custody, and in my opinion the accompanying Balance Sheet is correct and in accordance with the books of accounts.

Respectfully submitted,

WALTER B. FRASER

Public Accountant

AUGUSTA WATER DISTRICT

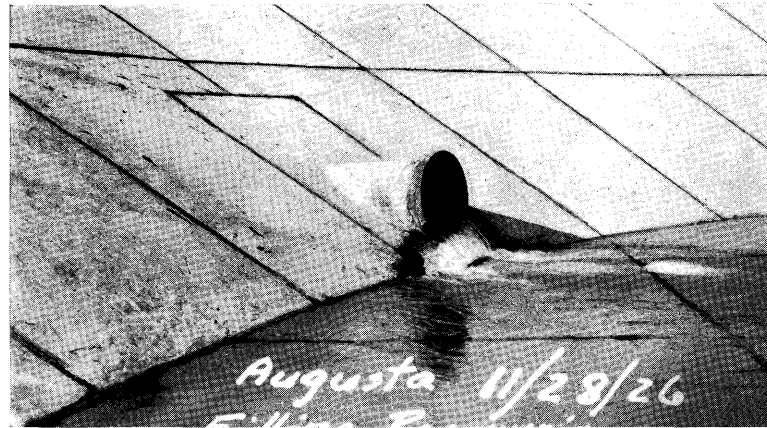
SCHEDULE No. 1.

Statement of Assets and Liabilities for Year Ending December 31, 1926.

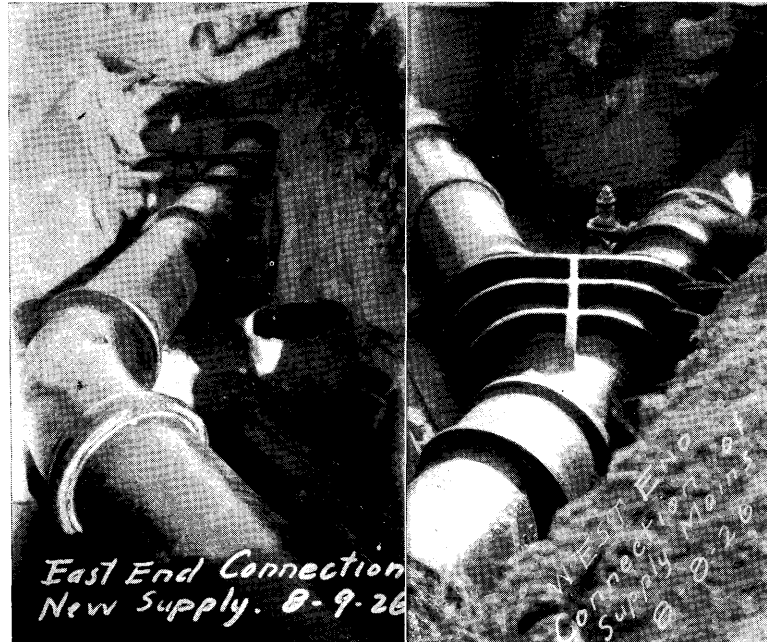
<i>Current Assets</i>		<i>Current Liabilities</i>	
Cash in General Fund		Accrued Interest Long Term Debt	
Detail No. 1	\$43,518 06	Detail No. 8	\$20,666 66
Accounts Receivable			
Detail No. 2	6,760 20		
Materials and Supplies		Surplus General Fund	
Detail No. 3	6,302 11	Detail No. 10	40,908 74
Bond Discount & Expense			
Detail No. 5	4,995 03		
	\$61,575 40		\$61,575 40
 <i>Sinking Funds Invested</i>		 <i>Sinking Funds</i>	
Cash in State Trust Co.		Sinking Fund Reserves	
Detail No. 5	\$7,029 50	Detail No. 5	\$244,326 20
Cash in Augusta Trust Co.			
Detail No. 5.	9,244 36		
Cash in First Nat'l Granite			
Detail No. 5	3,312 16		
Bonds, Detail No. 5	224,740 18		
	\$244,326 20		\$244,326 20
 <i>Capital Assets</i>		 <i>Capital Liabilities</i>	
Plant Value or Fixed Capital		Bonded Debt	
Detail No. 6	\$1,300,795 86	Detail No. 9	\$1,000,000 00
Less			
Reserve for Depreciation		Capital Surplus	
Detail No. 7	100,546 54	Detail No. 10	200,249 32
	\$1,200,249 32		\$1,200,249 32

SCHEDULE No. 2.

<i>Detail No. 1</i>			
<i>Cash General Fund</i>			
Balance as per bank			\$52,479 37
Less			
Checks Drawn and Outstanding			
Check No. 8298		\$	5 00
8373			141 00
8387			100 00
8388			100 00
8392			40 00
8394			75 31
8404			6,500 00
8405			2,000 00
			8,961 31
Balance as per statement			\$43,518 06



FIRST WATER FROM CARLETON POND FLOWING INTO
NEW RESERVOIR NOVEMBER 28, 1926



SOME HEAVY UNDER GROUND CONNECTIONS,
NEW RESERVOIR

REPORT OF AUDITOR

11

Detail No. 2

Accounts Receivable		
Due on Water Rents	\$6,457 80	
Due on Services	302 40	
	<hr/>	\$6,760 20

Detail No. 3

Materials and Supplies		
Pipe and fittings on hand		6,302 11

Detail No. 4

Sinking Fund Investments		
Cash in State Trust Company		
Book No. 16402	\$7,029 50	
Cash in Augusta Trust Company		
Book No. 13138	9,244 36	
Cash in First National Granite Bank		
Book No. 852	3,312 16	
Bonds		
Augusta Water District Bonds		
Par Value \$231,500 00	224,740 18	
	<hr/>	\$244,326 20

Detail No. 5

Bond Discount and Expense		
This is the net amount to be prorated over the life of the issue of the bonds		4,995 03

Detail No. 6

Plant or Fixed Capital Account		
Balance June 30, 1915		\$827,488 11
Additions to Plant since June 30, 1915		
Land Devoted to Water operations	\$ 8,098 00	
General Structures	35,022 95	
Works and Station Structures	31,653 77	
Purification System	13,108 12	
Reservoirs and Standpipes	123,138 10	
Distribution Mains	240,995 36	
Services	1,523 90	
Meters	6,910 02	
Customers' Installations	431 70	
General Office Equipment	1,395 38	
Stable and Garage Equipment	1,677 97	
Other Equipment	7,453 78	
Engineering & Superintendence	592 47	
Law Expenditures	1,305 43	
	<hr/>	473,307 75
		<hr/>
		\$1,300,795 86

Detail No. 7

Reserve for Depreciation		
Balance January 1, 1926	\$87,538 59	
Additions for year 1926	13,007 95	
	<hr/>	\$100,546 54

Detail No. 8

Accrued Interest on Bonded Debt		
To Interest accrued on Long Term Bonds but coupons not yet matured		20,666 66

Detail No. 9

Long Term Debt		
Bonds due August 1, 1934	\$700,000 00	
Bonds due October 1, 1956	300,000 00	
	<hr/>	\$1,000,000 00

Detail No. 10

Surplus and How Employed		
Assets Increased		
Cash General	\$34,194 19	
Cash Sinking Fund	1,642 11	
Bond Discount & Expense	4,995 03	
Sinking Fund Bonds	8,844 57	
Fixed Capital	190,653 71	
Liabilities Decreased		
Notes Payable	100,000 00	
	<hr/>	340,329 61
Less		
Assets Decreased		
Accounts Receivable	6,893 91	
Materials Supplies	1,180 82	
Liabilities Increased		
Accrued Interest	9,000 00	
Long Term Debt	300,000 00	
Sinking Fund Reserve	10,486 68	
Depreciation Reserve	13,007 95	
	<hr/>	\$340,571 36
Net decrease for year 1926	239 75	
	<hr/>	\$241,397 81
Surplus December 31, 1925		
Less Decrease	239 75	
	<hr/>	\$241,158 06

SCHEDULE NO. 3

Statement of Income and Expense for Year Ending December 31, 1926

	<i>Income</i>	
Commercial Revenues	\$78,404 82	
Hydrant Revenue	5,875 84	
Street Sprinkling	376 00	
Fountains	45 00	
Profit on Jobbing Accounts	279 50	
Other Utilities	1,033 76	
Interest and Dividends	4,385 79	
Non-operating Revenue	223 00	
	<hr/>	\$90,623 71

Expenses

General Office Supplies & Expenses	\$1,362 67	
Insurance	1,353 33	
Stable and Garage Expense	2,236 24	
Storeroom Expense	669 27	
Maintenance Reservoirs & Standpipes	272 77	
Maintenance of Hydrants	695 90	
Maintenance of Dams and Wells	58 73	
General Expense	261 67	
Other Supplies and Expenses	195 87	
Taxes	560 53	
Maintenance of Services	1,219 49	
Distribution Supplies and Expenses	526 84	
Distribution Labor	3,310 30	
Commercial, Salaries and Expenses	2,134 54	
Maintenance Pumping Station Equipment	58 40	
Interest	6,006 16	
Power	3,983 20	
Maintenance Purification System	681 40	
Maintenance of Meters	374 79	
Purification Supplies and Expenses	696 33	
Salaries & Expenses of General Officers	4,831 71	
Interest Deductions	31,000 00	
Deductions Sinking Fund	10,486 68	
Maintenance Distribution Structures	252 61	
Maintenance Pumping Station Structures	8 13	
Pumping Labor	1,774 40	
Maintenance Distribution Mains	1,333 54	
Commercial Office Supplies & Expenses	43 00	
Purification Labor	1,425 04	
Extinguishment of Discount on Debt	41 97	
Depreciation	13,007 95	90,863 46
	<hr/>	
Loss for year		239 75
		<hr/>
		\$90,623 71

SCHEDULE NO. 4.

Statement of Cash Receipts and Expenditures Year Ending Dec. 31, 1926

Bank Balance January 1, 1926		\$9,323 87
	<i>Receipts</i>	
Water Rents	\$92,516 15	
Services	6,953 75	
Notes Payable	396,094 88	
Sale of Bonds	294,963 00	
Interest and Dividends	5,305 94	
Insurance	222 87	
Distribution Mains	13 27	
Stable and Garage Expense	19 25	
Reservoirs & Standpipes	1 33	
Rentals	120 00	
Sale of Building	100 00	

AUGUSTA WATER DISTRICT

Sale of Gravel	3 00	
Purification Supplies	584 50	
Sinking Fund	71,283 30	
Miscellaneous Refunds	62 49	
Total Cash Receipts		\$868,243 73
		\$877,567 60

Disbursements

Works and Station Structures	1,422 73
Land Devoted Water Operations	5,083 80
General Structures	34,836 88
Purification System	239 90
Reservoirs & Standpipes	121,244 63
Distribution Mains	22,602 03
Services	1,279 09
Meters	1,167 60
Customers Installations	127 03
Other Equipment	584 86
Law Expenditures	1,015 89
Taxes	560 53
Materials and Supplies	5,603 28
Pumping Labor	1,774 40
Power	3,983 20
Other Supplies and Expenses	195 87
Maintenance Pumping Station Structures	8 13
Maintenance of Dams and Wells	58 73
Maintenance Pumping Station Equipment	58 40
Purification Labor	1,425 04
Purification Supplies and Expenses	1,280 83
Maintenance Purification System	681 40
Distribution Labor	3,310 30
Distribution Supplies and Expense	526 84
Maintenance Distribution Structures	252 61
Maintenance Reservoirs & Standpipes	272 77
Maintenance Distribution Mains	1,333 54
Maintenance Meters	374 79
Maintenance of Hydrants	695 90
Commercial Salaries and Expenses	2,134 54
Commercial Office Supplies and Expenses	43 00
Salaries and Expenses of General Officers	4,831 71
General Office Equipment	754 70
Stable & Garage Equipment	83 61
Maintenance of Services	1,219 49
General Office Supplies and Expenses	1,362 67
General Expenses	261 67
Insurance	1,576 20
Stable and Garage Expense	2,236 24
Storeroom Expense	669 27
Interest on Bonds	22,000 00
Commercial Revenue	21 78
Notes Payable	500,000 00

REPORT OF AUDITOR

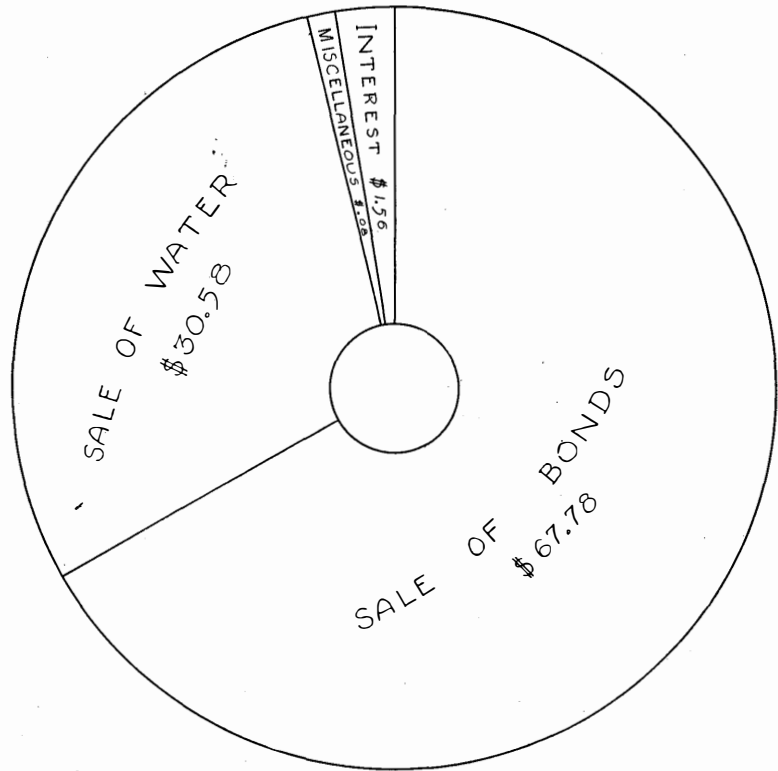
Interest on Notes Payable	2,163 53	
Interest	157 50	
Sinking Funds	82,532 63	
Total Cash Disbursements		\$834,049 54
Bank Balance December 31, 1926		43,518 06
		\$877,567 60

SCHEDULE NO. 5

*Comparative Statement of Assets and Liabilities and Surplus
December 31, 1925—December 31, 1926*

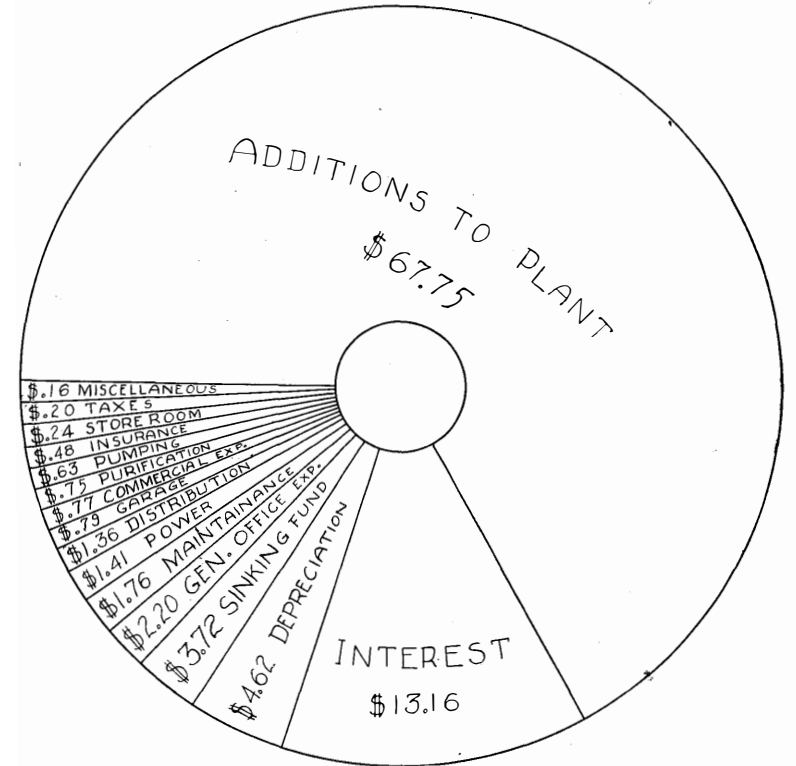
	<i>Assets</i>		<i>Increase or Decrease†</i>
	<i>Dec. 31 1926</i>	<i>Dec. 31 1925</i>	
Cash General Fund	\$ 43,518 06	\$ 9,323 87	\$ 34,194 19
Cash Sinking Fund	19,586 02	17,943 91	1,642 11
Accounts Receivable	6,760 20	13,654 11	† 6,893 91
Material & Supplies	6,302 11	7,482 93	† 1,180 82
Bond Discount & Expense	4,995 03		4,995 03
Sinking Fund Bonds	224,740 18	215,895 61	8,844 57
Fixed Capital	1,300,795 86	1,110,142 15	190,653 71
Net Increase			\$232,255 88
Total	\$1,606,697 46	\$1,374,442 58	
	<i>Liabilities and Surplus</i>		
Accrued Interest	\$ 20,666 66	\$ 11,666 66	\$ 9,000 00
Notes Payable		100,000 00	† 100,000 00
Long Term Debt	1,000,000 00	700,000 00	300,000 00
Sinking Fund Reserve	244,326 20	233,839 52	10,486 68
Depreciation Reserve	100,546 54	87,538 59	13,007 95
Surplus	241,158 06	241,397 81	
Net Decrease			\$ 239 75
Total	\$1,606,697 46	\$1,374,442 58	

INCOME CHART



HOW THE DISTRICT DERIVES EACH \$100 OF INCOME

EXPENSE CHART



HOW THE DISTRICT SPENDS EACH \$100 OF INCOME

Treasurer's Report

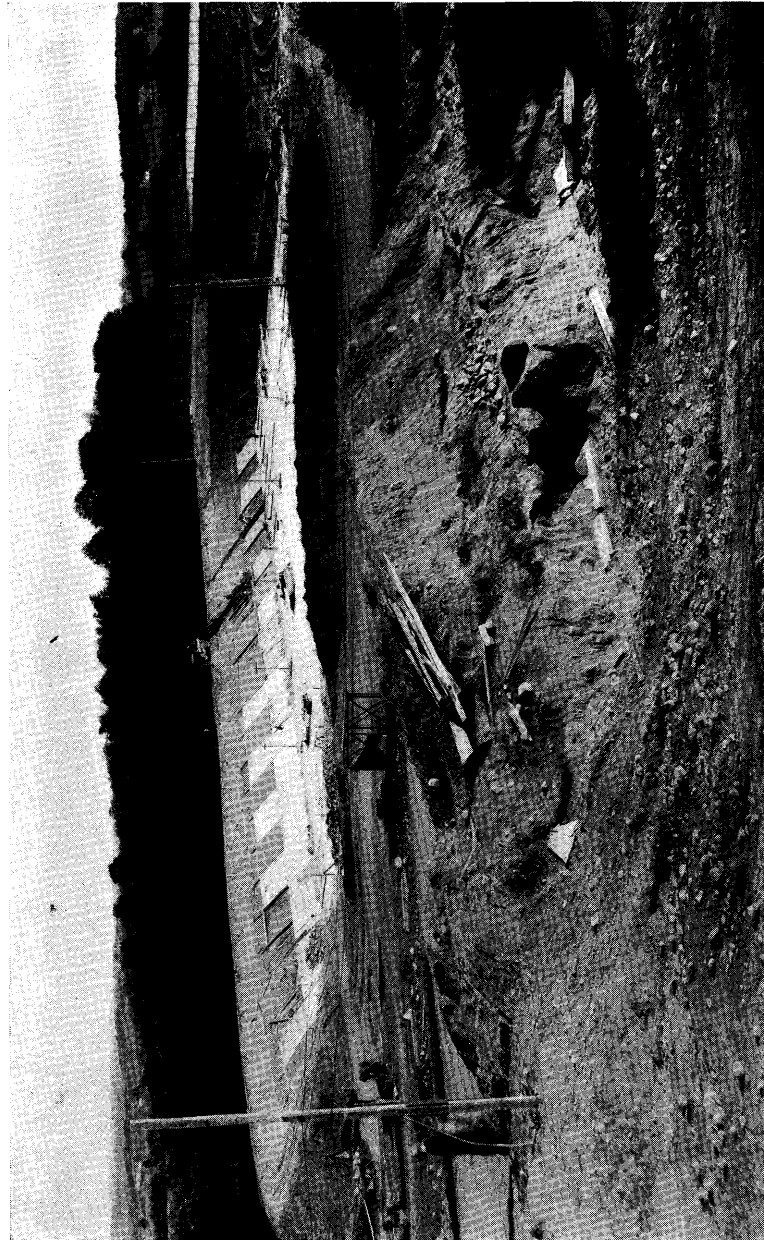
The following itemized account of the receipts and disbursements of the Augusta Water District for the fiscal year ending December 31, 1926, are herewith submitted classified under the following schedules:

Receipts from Operations	Schedule A
Receipts from Sinking Fund	Schedule B
Disbursements of receipts from Operations	Schedule C
Disbursements of receipts from Sinking Fund	Schedule D
Statement of Sinking Fund	Schedule E
Additions to Sinking Fund	Schedule F

SCHEDULE A

Receipts from Operations

1926		
Jan.	31	Water Collections
		\$10,342 13
		291 52
		16 92
		175 54
		40 95
Feb.	28	Water Collections
		3,817 37
		25 20
		9 00
		2 67
		48 98
Mar.	31	Water Collections
		5,470 22
		20 92
		36 76
April	30	Water Collections
		1,915 75
		36 83
		50 00
		116 73
		25 31
May	31	Water Collections
		2,157 15
		257 53
		18 93
		99 25
		62 49



WORK ON NEW RESERVOIR UNDERWAY

REPORT OF TREASURER

June	30	Water Collections	23,863	78
	30	Service Collections	661	30
	30	Interest on Deposits	7	43
July	31	Water Collections	6,909	57
	31	Service Collections	882	51
	31	Interest on Deposits	22	58
	31	Rebate on Cylinders	116	98
Aug.	31	Water Collections	3,010	40
	31	Service Collections	653	45
	31	Interest on Deposits	38	52
Sept.	30	Water Collections	8,289	83
	30	Service Collections	1,316	04
	30	Interest on Deposits	74	95
Oct.	31	Water Collections	1,306	84
	31	Service Collections	1,194	89
	31	Interest on Deposits	31	91
Nov.	30	Water Collections	1,016	50
	30	Service Collections	209	04
	30	Interest on Deposits	84	89
	30	Sale of Buildings	100	00
Dec.	31	Water Collections	25,437	25
	31	Service Collections	1,404	52
	31	Interest on Deposits	49	54
	31	Rebate on Cylinders	175	25
	31	Gravel	3	00
	31	Sale of Hay	70	00
	31	Rebate on Freight	13	27
	31	Rebate on Insurance	80	00

Total receipts from Operations \$102,062 39

Jan.	1	Cash on hand	\$	9,323	87
	23	Loan First Natl. Bank, Boston	\$125,000	00	
		Less discount	1,906	25	123,093 75
July	9	Loan First Natl. Granite Bank			25,000 00
Aug.	7	Loan Old Colony Trust Co.	75,000	00	
		Less discount	735	59	74,264 41
Sept.	20	Loan Old Colony Trust Co.	175,000	00	
		Less discount	1,263	28	173,736 72
Oct.	30	Proceeds Sale of Bonds			295,896 33

Total receipts for year \$803,377 47

SCHEDULE B

Receipts from Sinking Fund

Jan.	4	Cash for \$1,000 Augusta Water District 1934 Bonds	\$1,017	00
Feb.	28	Coupons Augusta Water District	840	00
	28	Coupons City of Augusta	20	00
	28	Coupons City of Toronto	150	00
	28	Coupons American Tel. & Tel. Co.	125	00
	28	Coupons Gannett Building Co.	110	00
	28	Interest Deposit First National Granite Bank	146	51
	28	Interest Deposit Augusta Trust Co.	104	43

AUGUSTA WATER DISTRICT

April 30	Coupons City of Beverly	60 00
May 30	Cash for \$1,500 Augusta Water District 1934 Bonds	1,513 83
30	Interest Deposit Augusta Trust Co.	115 95
30	Coupons New York, New Haven & Hartford	175 00
Aug. 30	Coupons Augusta Water District	870 00
30	Coupons American Tel. & Tel. Co.	125 00
	Coupons Liberty Bonds	106 25
	Coupons City of Augusta	20 00
	Coupons Gannett Building Co.	110 00
	Coupons City of Toronto	150 00
Sept. 30	Coupons City of Beverly	60 00
	Interest Deposit Augusta Trust Co.	121 14
	Interest First National Granite Bank	97 27
Oct. 31	Interest Deposit Augusta Trust Co.	5 45
	Coupons New York, New Haven & Hartford	175 00
	Coupons Liberty Bonds	106 25
	Sale of Bonds	
	\$1,000 City of Augusta Bonds	995 72
	\$5,000 City of Toronto Bonds	5,305 83
	\$10,000 New York, New Haven & Hartford Bonds	6,526 25
	\$5,000 Liberty Bonds	5,129 55
	\$5,000 American Tel. & Tel.	5,189 58
Nov. 10	\$3,000 City of Beverly Bonds	2,967 33
	\$4,000 Gannett Building Bonds	4,140 50
12	Interest Deposit Augusta Trust Co.	122 64
29	Cash for \$38,000 Augusta Water District 1953-54-55-56 Bonds	37,488 65
		<u>\$74,190 13</u>

SCHEDULE C

Disbursements of Receipts from Operations

Jan. 4	Cash for Pay Roll Dec. 28-Jan. 3	\$ 388 70
4	O. B. Frost Co. a-c Garage and Office Building	4,173 42
6	W. S. Wyman Salary for 1925	100 00
6	E. E. Newbert Salary for 1925	100 00
6	W. D. Hutchins Salary for 1925	100 00
6	John H. Ellis, Jr. Telephone Service	18 00
11	Cash for Pay Roll Jan. 4-10	396 00
11	J. H. Cogan Co. a-c Heater Garage and Office	2,605 20
18	Cash for Pay Roll Jan. 11-17	394 40
19	R. H. Jackson Land near Fuller's Crossing	1,000 00
23	Chadwick-Boston Lead Co. Solder	21 07

REPORT OF TREASURER

Jan. 23	Macomber, Farr & Whitten Insurance	151 60
23	Old Colony Trust Co. Note	50,058 33
25	National Shawmut Bank Coupons due Feb. 1, 1926	11,000 00
25	Cash for Pay Roll Jan. 18-23	385 05
Feb. 1	Cash for Pay Roll Jan. 25-31	398 25
2	First National Bank of Boston Note	50,000 00
2	O. B. Frost Co. a-c Office and Garage Buildings	5,145 20
8	Cash for Pay Roll Feb. 1-7	398 25
15	Cash for Pay Roll Feb. 8-14	398 25
15	Central Maine Power Co. Lighting & Power Service	779 76
16	Maine Central Railroad Co. Freight	10 07
16	New England Tel. & Tel. Co. Telephone Service	33 80
17	Red Hed Mfg. Co. Solder Nipples	6 09
17	Hussey Hardware Co. Sundry Expense and Supplies	104 57
17	Fifield Brothers Co. Automobile Supplies	21 25
17	Augusta Machine Shop Labor and Material	66
17	Trouant and Bates Co. Shades	41 10
17	Malcolm & Dyer Co. Brass Wire Cloth	2 50
17	Taber & Reid Material	2 05
17	Nichols Garage Co. Automobile Supplies	9 35
17	J. G. Cushman Gravel and Cedar Poles	5 90
17	Charles E. Nash & Son Printing Water Bills	13 75
17	Augusta Lumber Co. Lumber	18 70
17	Buffalo Forge Co. Sundries	3 22
17	Braman-Dow & Co. Material and Supplies	9 63
17	Electro Bleaching Gas Co. Inc. Liquid Chlorine	162 00
17	National Electric Mfg. Co. Inc. Drill	81

Feb. 17	George W. Merrill Office Supplies	16 20
17	National Meter Co. Meter Parts	4 90
17	Wallace Tiernan Co. Inc. Repairing Meter	8 91
17	Harry T. Jose Labor & Material	1 65
17	Purinton Bros. Coal	70 00
17	Brooks Hardware Co. Sundries	16 85
17	Macomber, Farr & Whitten Insurance	129 65
23	Walter B. Fraser Auditing Books	75 00
23	Cash for Pay Roll Feb. 15-20	384 75
Mar. 1	Cash for Pay Roll Feb. 22-28	404 25
1	C. E. Hoxie a-c House at East Winthrop	800 00
5	O. B. Frost Co. a-c Office and Garage Building	4,007 39
9	Cash for Pay Roll Mar. 7-9	398 25
15	J. H. Cogan & Co. a-c Heater, Garage & Office Building	877 35
15	Cash for Pay Roll Mar. 8-14	397 90
20	Augusta Trust Co. Draft for Compressor parts	17 25
20	Hersey's Shoe Store Rubber Boots	11 00
20	Central Maine Power Co. Lighting & Power Service	712 58
20	Rensselaer Valve Co. Tapping Sleeves & Valves	201 80
20	Wallace & Tiernan Co. Inc. Repairing Venturi Meter	31 73
20	Malcolm & Dyer Saw Set	2 00
20	Fifield Brothers Co. Sundries	7 19
20	Brooks Hardware Co. Sundries	25 85
20	Purinton Brothers Co. Coal and Cement	98 85
20	Harry T. Jose Automobile Supplies	34 20
20	Hussey Hardware Co. Gasoline and Supplies	49 88
20	J. H. Cogan & Co. Labor and Material	24 33

20	Tracy & Metcalf Labor and Lumber	8 30
20	National Meter Co. Meter and parts	26 46
20	Maine Central Railroad Co. Freight	2 92
20	Kennebec Oil Co. Kerosene	3 25
22	Cash for Pay Roll Mar. 15-21	387 85
24	Capital City Motor Co. Supplies	57 43
24	Eagle Oil & Supply Co. Sundries	83 85
24	Addressograph Co. Inspection	6 93
24	Braman, Dow & Co. Automobile Washer	8 55
24	New England Tel. & Tel. Co. Telephone Service	18 45
24	Maine Central Railroad Co. Freight	10 19
24	Central Maine Power Co. Installing Lights	24 96
24	George W. Merrill Office Supplies	102 00
24	Macomber, Farr & Whitten Insurance	775 57
29	Cash for Pay Roll March 22-28	410 50
April 5	Cash for Pay Roll March 29-April 4	442 45
12	Cash for Pay Roll April 5-11	390 75
12	O. B. Frost Co. Lumber	7 35
12	Central Maine Power Co. Lighting and Power Service	351 07
12	Maine Central Railroad Co. Freight	22 51
14	O. B. Frost Co. a-c Garage and Office Buildings	1,997 49
17	Augusta Press Printing	55 00
17	Central Maine Power Co. Lighting	8 97
20	Cash for Pay Roll April 12-19	387 30
24	Bunker & Savage Plans and Specifications on Office and Garage Buildings	425 73
26	Cash for Pay Roll April 19-25	403 55

May 1	J. H. Cogan Co. a-c Heater, Garage & Office Buildings	614 45
3	Cash for Pay Roll April 26- May 2	401 80
8	B. F. Goodrich Rubber Co. Tires and Tubes	169 74
10	O. B. Frost Co. Labor and Material	16 13
10	Petty Cash Express and Sundries	18 67
10	Cash for Pay Roll May 3-9	511 41
10	J. C. Arnold, P. M. Stamps	60 18
13	O. B. Frost Co. a-c Garage and Office Buildings	4,085 38
15	H. F. Chute Socket Set	7 68
15	Electro Bleaching Gas Co. Liquid Chlorine	162 00
15	Geo. Fuller's Sons Inc. Labor and Material	23 70
15	New England Tel. & Tel. Co. Telephone Service	54 70
15	Maine Central Railroad Co. Freight	16 05
15	Fifield Brothers Co. Automobile Supplies	56 61
15	Geo. W. Quimby Co. Lettering Brush	75
15	Clark Bros. Mfg. Co. Inc. Bale King Wipers	17 60
15	Braman Dow Co. Pipe and Fittings	243 75
15	Crosby Steam Gage and Valve Co. Repairing Steam Gage	3 05
15	Art Metal Construction Co. Shelving Equipment	228 40
15	Eagle Oil and Supply Co. Material and Supplies	119 35
15	Wallace & Tiernan Co. Inc. Repairing Gage	2 65
15	Central Maine Power Co. Sundry Expense	38 72
15	Nichols Garage Supplies	7 00
15	Kennebec Oil Co. Kerosene	3 25
15	Tracy & Metcalf Labor and Material	4 99
15	Augusta Machine Shop Inc. Material	19 42
15	Darling Automobile Co. Inc. Automobile Supplies	13 55

May 15	Red Hed Mfg. Co. Stop and Wastes	210 00
15	Harry T. Jose Labor and Supplies	47 10
15	Metcalf & Eddy a-c Plans and Specifications for Reservoir	1,750 00
15	Pierce-Perry Co. Pig Lead	203 30
15	Swift & Turner Co. Sundries	2 61
15	Brooks Hardware Co. Hardware as per contract	299 05
15	Hussey Hardware Co. Sundry Expenses and Supplies	124 57
15	Capital City Motor Co. Automobile Supplies	38 09
15	Capital City Motor Co. Supplies	10 27
15	Purinton Bros. Co. Coal	69 30
15	Augusta Trust Co. Deposit Box Rental	20 00
15	National Shawmut Bank of Boston Service rendered on Coupons	55 00
15	Chas. E. Nash Co. Printing	43 25
15	R. W. Soule Emporium Co. Shades	28 00
15	The Forest Nursery Pine and Spruce Trees	120 00
15	Macomber, Farr & Whitten Insurance	44 50
15	George W. Merrill Office Supplies	1 85
15	Burroughs Adding Machine Co. Supplies	2 33
15	W. T. Mace, Collector Tax Pinney farm, Readfield	13 20
17	Cash for Pay Roll May 10-16	557 25
24	First National Bank of Boston Interest on Note	1,984 37
24	Cash for Pay Roll May 16-23	698 85
June 1	Cash for Pay Roll May 24-30	672 05
3	Chas E. Hoxie Repairing Chimney at Pumping Station	225 80
8	Cash for Pay Roll May 31-June 6	620 90
9	Maine Central Railroad Co. Freight	37 40
14	Cash for Pay Roll June 7-14	672 50

June 18	New England Tel. & Tel. Co. Telephone Service	28 60
18	Chadwick-Boston Lead Co. Sheet Lead	8 01
21	Cash for Pay Roll June 13-20	666 70
21	L. Sonneborn & Sons Inc. Lapidolith	55 50
22	W. G. Boothby Rebate on Water	3 00
23	Roy Flynt Service 10,000 Transo Envelopes	40 00
24	Burroughs Adding Machine Co. Care of Machine	5 55
28	Cash for Pay Roll June 21-27	726 40
July 3	Cash for Pay Roll June 28-July 2	637 90
3	George W. Merrow Farm and Buildings at East Readfield	4,500 00
3	Maine Central Railroad Co. Freight	210 87
3	J. A. Folsom Sundries	10 30
6	Wallace & Tiernan Co. Inc. Valve and Gaskets	32 60
6	Kennebec Oil Co. Kerosene	8 50
6	Capital City Motor Co. Automobile Supplies	15 44
6	Fifield Brothers Co. Sundries	1 87
6	Addressograph Co. Plates and Frames	12 83
6	Malcolm & Dyer Co. Labor and Supplies	1 17
6	George Fullers Sons Inc. Andirons and Labor	19 00
6	R. W. Soule Emporium Co. Office Supplies	90 50
6	Purinton Brothers Co. Coal	41 10
6	Engineering and Publishing Co. Advertising for Bids on Reservoir	19 50
6	George W. Merrill Office Supplies	3 30
6	Meuller Co. Inc. Sundry Expense	39 85
6	Portland Water District Pipe	280 98
6	Becker & Co. Chair Cushions	19 55
6	E. T. Burrowes Co. Screens	28 40

July 6	Stone and Cooper Coal Co. Coal	20 00
6	J. H. Cogan Co. Sundry Expense	7 78
6	Augusta Machine Shop Inc. Labor and Material	1 21
6	Harry T. Jose Automobile Supplies	19 55
6	The Bond Co. Asbestos Jointers	48 06
6	Eagle Oil & Supply Co. Oil	61 60
6	Grinnell Co. Bends, Bell & Spigot	33 95
6	E. Corey & Co. Steel	11 13
6	Builders Iron Foundry Reducer	10 20
6	Kennebec Journal Co. Advertising for bids on Reservoir	8 40
6	Ingersoll-Rand Co. Sundries	21 50
6	W. L. Blake & Co. Jute and pipe fittings	13 43
6	Brooks Hardware Co. Material and Supplies	80 25
6	Electro Bleaching Gas Co. Liquid Chlorine	162 00
6	Hussey Hardware Co. Gasoline and Supplies	141 73
6	Portland Maine Publishing Co. Advertising bids for Reservoir	17 44
6	Engineering News Record Advertising bids for Reservoir	15 60
6	J. B. Bass Publishing Co. Advertising bids for Reservoir	12 54
6	City of Augusta Office Rental and Repairing Street	225 00
6	Tracy & Metcalf Labor and Material	11 85
6	Braman Dow & Co. Pipe and Fittings	242 50
6	Augusta Lumber Co. Lumber	29 25
6	Town of Winthrop Taxes	95 00
6	Walter Fraser Examining Accounts	25 00
6	Hydraulic Development Co. Lead Hydro-Tite	455 00
6	Central Maine Power Co. Lighting and Power Service	629 73
6	Water Works Engineering Subscription for Fire Engineering Magazine ..	4 00

July	6	Macomber, Farr & Whitten Insurance	76 25
	9	Wyman & Simpson a-c New Reservoir	12,223 35
	12	Cash for Pay Roll July 3-10	686 10
	12	Addressograph Co. Inspection	6 93
	12	Maine Central Railroad Co. Freight	365 24
	14	Metcalf & Eddy a-c Plans and Specifications for Reservoir	590 00
	19	Cash for Pay Roll July 12-18	628 05
	19	Central Maine Power Co. Lighting and Power Service	258 25
	19	New England Tel. & Tel. Co. Telephone Service	29 91
	19	Z. E. Bolduc Tracing Carload Pipe	100 00
	19	Wesley W. Albee Wood	33 60
	26	Cash for Pay Roll July 19-25	703 60
	21	National Shawmut Bank Coupons due Aug. 1, 1926	11,000 00
	27	H. H. Cushman Services as Patrolman at Carleton Pond	100 00
Aug.	2	Roy Flynt Service Printing Annual Reports	276 77
	3	Cash for Pay Roll July 26—Aug. 1	702 10
	7	First National Granite Bank Note and Interest	25,120 83
	9	New England Tel. & Tel. Co. Telephone Service	46 38
	9	Maine Central Railroad Co. Freight	476 42
	9	Central Maine Power Co. Lighting and Power Service	394 70
	9	B. F. Goodrich Rubber Co. Tubes and Tires	68 51
	9	National Meter Co. Meters	808 50
	9	Rensselaer Valve Co. Hydrants, Valves, Etc.	2,507 25
	9	Metcalf & Eddy a-c Plans and Specification for Reservoir	705 00
	9	E. Corey & Co. Sundry Supplies	17 55
	9	George Fuller's Sons Inc. Steps and Manhole	32 44
	9	Braman Dow & Co. Pipe Fittings	160 60

Aug.	9	The Bond Co. Sundry Supplies	132 50
	9	Cash for Pay Roll Aug. 2-8	782 50
	9	Petty Cash Express and Sundries	23 80
	10	Wyman and Simpson a-c New Reservoir	14,422 34
	10	O. B. Frost Co. a-c Garage and Office Buildings	1,500 00
	10	Aaron B. Ripley Right of Way	500 00
	10	C. E. Hoxie a-c House at East Winthrop	185 05
	11	Maine Water Utilities Association Dues	10 00
	13	O. B. Frost Co. a-c Garage and Office Buildings	591 90
	13	E. S. Marden Rebate on Water Bill	12 25
	16	Cash for Pay Roll Aug. 9-15	714 68
	19	Hussey Hardware Co. Gasoline and Supplies	137 72
	23	Cash for Pay Roll Aug. 16-22	943 13
	25	Bunker & Savage a-c Architect	164 18
	25	Bunker & Savage a-c Architect	655 68
	30	Cash for Pay Roll Aug. 17-29	706 45
Sept.	7	Cash for Pay Roll Aug. 30-Sept. 5	821 10
	7	Maine Central Railroad Co. Freight	705 62
	9	Wyman & Simpson a-c New Reservoir	18,541 61
	9	Metcalf & Eddy a-c Plans and Specifications New Reservoir ..	895 00
	9	Brooks E. Carter Office Furniture	570 25
	11	Purinton Brothers Co. Coal and Cement	7 36
	11	George W. Merrill Office Supplies	10 70
	11	Charles E. Nash & Son Meter Slips	10 25
	13	E. Burnham Co. Inc. Pipe	9,685 72
	13	Nichols Garage Labor and Linings	2 50
	13	W. L. Blake & Co. Fittings	17 53

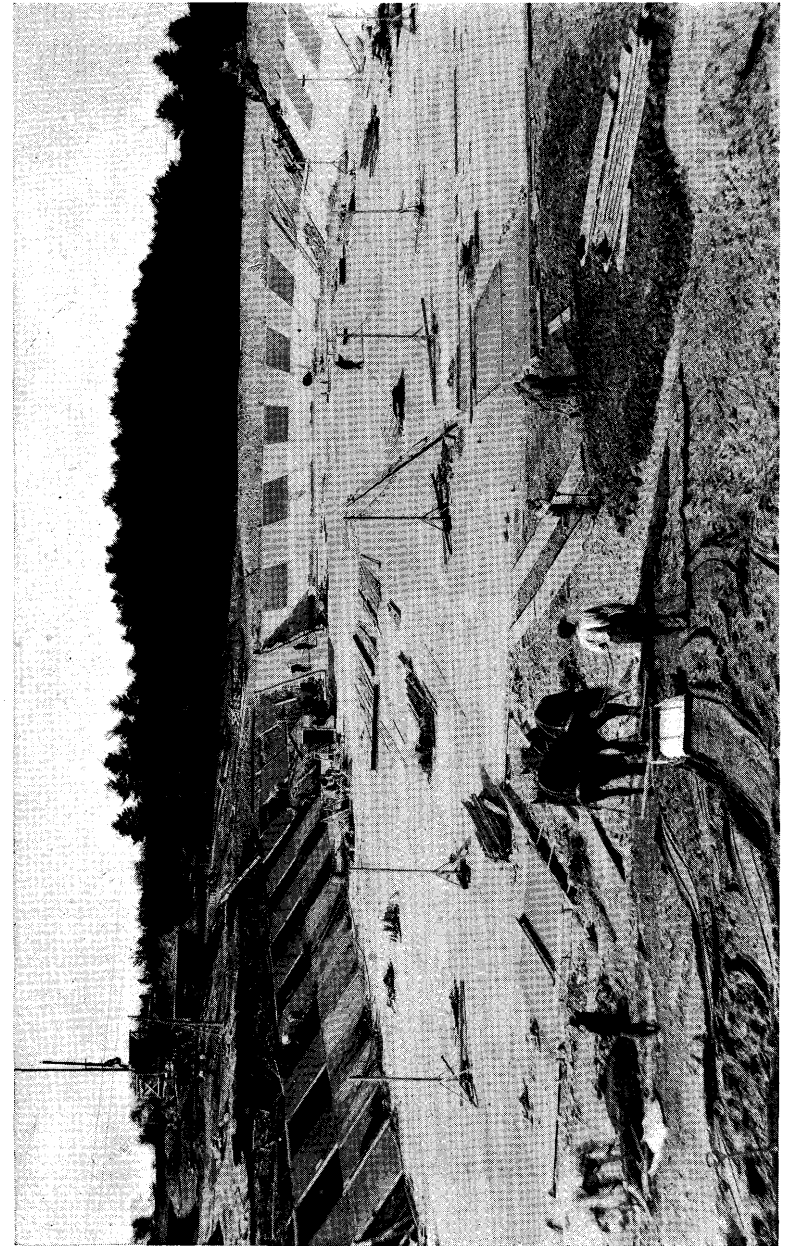
Sept. 13	National Meter Co.	
	Meters	628 48
13	Ingersoll-Rand Co.	
	Compressor Fittings	33 60
17	National Shawmut Bank	
	Services rendered on Coupons	55 00
13	E. T. Burrowes Co.	
	Wire Screens	17 60
13	Cement lined Pipe Co.	
	Pipe and Fittings	737 51
13	E. J. Crosby	
	Recording Deed	77
13	Darling Automobile Co. Inc.	
	Automobile Supplies	6 80
13	J. J. Bidden Cordage Co.	
	Sundry Supplies	30 80
13	Taber & Reid	
	Sundry Supplies	4 10
13	Mansur Photo Laboratory	
	Negatives and Prints of Garage and Office Buildings	10 00
13	E. Corey & Co.	
	Vise	15 15
13	Fifield Brothers Co.	
	Automobile Supplies	21 16
13	Ropes, Grey, Boyden & Perkins	
	Legal advise on Bonds	100 00
13	Braman Dow & Co.	
	Pipe	295 93
13	Tracy & Metcalf	
	Labor and Lumber	2 60
13	Merrill Brothers	
	Lawn Seed	4 80
13	Augusta Lumber Co.	
	Lumber	25 60
13	A. P. Smith Mfg. Co.	
	Fittings	35 63
13	Cash for Pay Roll	
	Sept. 6-12	637 65
13	Brooks Hardware Co.	
	Material and Supplies	56 21
13	Wesley W. Albee	
	Wood	75 00
13	Builders Iron Foundry	
	Increases B. & S.	45 90
13	Eagle Oil & Supply Co.	
	Motor Oil	42 19
13	Capital City Motor Co.	
	Automobile Supplies	6 85
13	Maine Central Railroad Co.	
	Freight	89 89
16	New England Tel. & Tel. Co.	
	Telephone Service	22 93
16	Central Maine Power Co.	
	Lighting and Power Service	385 12

Sept. 20	Cash for Pay Roll	
	Sept. 13-19	678 45
21	First National Bank of Boston	
	Note	125,000 00
21	Augusta Auto Supply Co.	
	Automobile Accessories	34 30
21	Hussey Hardware Co.	
	Gasoline and Supplies	114 55
21	Rensselaer Valve Co.	
	Tapping Sleeves and Valves	1,503 71
21	The Bond Co.	
	Dynamite, Exploders and Barrows	124 00
21	Brooks Hardware Co.	
	Sundries	53 65
21	Fifield Brothers Co.	
	Search Light	1 62
21	Burroughs Adding Machine Co.	
	Adding Machine Paper	7 20
21	Harry T. Jose	
	Labor and Material	28 82
21	J. H. Cogan Co.	
	Labor and Material	4 08
21	Red Hed Mfg. Co.	
	Tapping Machine	130 00
21	Cement Lined Pipe Co.	
	Pipe and Fittings	187 81
21	Darling Automobile Co.	
	Automobile Supplies	17 10
21	Capitol City Motor Co.	
	Automobile Supplies	6 75
21	E. Corey & Co.	
	Steel	6 63
21	Macomber, Farr & Whitten	
	Insurance	31 65
21	Braman Dow & Co.	
	Pipe and Fittings	134 73
21	R. W. Soule Emporium	
	Rubber Mat	8 50
21	Kennebec Oil Co.	
	Kerosene	8 50
24	Maine Central Railroad Co.	
	Freight	27 43
27	Cash for Pay Roll	
	Sept. 20-26	677 15
30	Petty Cash	
	Express and Sundries	22 83
Oct. 4	Cash for Pay Roll	
	Sept. 27-Oct. 3	577 10
6	McLean, Fogg & Southard	
	Legal Services	211 80
9	Wyman & Simpson	
	a-c New Reservoir	25,142 94
11	Cash for Pay Roll	
	Oct. 4-10	500 50

Oct. 18	Cash for Pay Roll Oct. 11-16	510 25
25	Cash for Pay Roll Oct. 18-25	606 20
27	Central Maine Power Co. Lighting and Power Service	378 23
28	New England Tel. & Tel. Co. Telephone Service	29 46
28	Metcalf & Eddy a-c Plans and Specifications New Reservoir....	1,220 00
28	Kennebec Oil Co. Kerosene	26 00
28	Mansur Photo Laboratory Framing Pictures for Office	10 50
28	Braman Dow & Co. Pipe and Fittings	452 09
28	Crosby Steam Gage and Valve Co. Repairing Steam Gage	19 50
28	H. B. Martin & Son Vise Stand and Pipe Bender	45 00
28	Electro Bleaching Gas Co. Liquid Chlorine	108 00
28	Eagle Oil & Supply Co. Sundries	92 41
28	Rensselaer Valve Co. Tapping Sleeves and Valves	142 44
28	Fifield Brothers Co. Automobile Supplies	1 20
28	E. E. Burnham Co. Inc. Pipe	1,535 59
28	Malcolm & Dyer Wire Fencing	5 20
28	Lizotte & Son Labor and Material	17 39
28	Augusta Lumber Co. Lumber	23 50
28	Kennebec Journal Co. Advertisement	7 30
28	Maine Central Railroad Co. Freight	17 19
28	Darling Automobile Co. Truck Body	85 00
28	W. L. Blake & Co. Sundries	7 20
28	Wallace & Tiernan Co. Inc. Triplex Pump and Injector	460 08
28	The Emery-Waterhouse Co. Oil and Turpentine	67 60
28	National Meter Co. Meters and Parts	308 00
28	Harry T. Jose Automobile Supplies	10 67
28	Purinton Bros. Co. Coal	3 70

Oct. 28	Hussey Hardware Co. Gasoline and Sundries	113 86
28	W. F. Hewett Gravel	5 00
28	Meuller Co. Inc. Gaskets	1 25
28	Capital City Motor Co. Automobile Parts	17 90
28	Maine Central Railroad Co. Freight	194 82
28	Macomber, Farr & Whitten Insurance	22 00
28	Walter B. Fraser Preparing Financial Statement	10 00
28	Darling Automobile Co. Automobile Supplies	2 05
28	Kennebec Journal Co. Kennebec Journal	70
30	Old Colony Trust Co. Legal Services	630 00
30	J. C. Arnold, P. M. Stamps	70 21
Nov. 1	Cash for Pay Roll Oct. 25-31	594 40
3	Old Colony Trust Co. Note	75,000 00
8	B. F. Goodrich Rubber Co. Tires and Tubes	22 15
8	Metcalf & Eddy a-c Plans and Specifications New Reservoir ..	1,332 00
8	Cash for Pay Roll Nov. 1-7	491 70
8	Wyman & Simpson a-c New Reservoir	25,921 66
15	Cash for Pay Roll Nov. 8-14	377 85
17	Old Colony Trust Co. Note	175,000 00
18	Maine Central Railroad Co. Freight	15 46
20	Wesley W. Albee Salary	750 00
23	Augusta Trust Co. Postage and Insurance on Bonds	1 67
23	Rensselaer Valve Co. Tapping Sleeve and Valves	308 89
23	Harry T. Jose Labor	1 00
23	Mansur Photo Laboratory Negatives and Prints for New Reservoir	9 00
23	Braman, Dow & Co. Fittings	190 53
23	E. E. Burnham Co. Inc. Pipe	1,500 98

Nov. 23	George Fuller's Sons Inc.	
	Labor	
23	Chas. E. Nash & Son	
	Water Bills and Pay Envelopes	32 75
23	Macomber, Farr & Whitten	
	Insurance	80 00
23	Electro Bleaching Gas Co.	
	Liquid Chlorine	162 00
23	Builder's Iron Foundry	
	Charts and Postage	25 48
23	Burrough's Adding Machine Co.	
	Care of Machine	5 55
23	Central Maine Power Co.	
	Lighting and Power Service	387 48
23	New England Tel & Tel Co.	
	Telephone Service	23 12
23	Union Water Meter Co.	
	Sundries	2 90
23	Fifield Brothers Co.	
	Automobile Supplies	2 10
23	Hersey's Shoe Store	
	Rubber Boots	35 00
23	George W. Merrill	
	Office Supplies	2 11
23	Red Hed Mfg. Co.	
	Pipe Fittings	960 00
23	Purinton Bros. Co.	
	Coal	74 38
23	City of Augusta	
	Repairing Streets	30 00
23	Augusta Machine Shop Inc.	
	Labor and Material	4 40
23	Brooks Hardware Co.	
	Sundry Expenses	23 64
23	Hussey Hardware Co.	
	Gasoline and Supplies	119 92
23	Capital City Motor Co.	
	Automobile Supplies	4 65
23	National Meter Co.	
	Meter Parts and Meter	579 74
23	Grinnell Co.	
	Sundry Expense	17 30
23	Wallace & Tiernan Co.	
	Chlorinator Parts	23 36
23	Frank E. Fitts Mfg. & Supply Co.	
	Material and Supplies	52 96
23	Town of Readfield	
	Taxes	452 33
23	Stone & Cooper Coal Co.	
	Coal	175 00
23	Cash for Pay Roll	
	Nov. 15-21	413 10
29	Cash for Pay Roll	
	Nov. 22-28	323 32
29	Petty Cash	
	Express and Sundries	22 67



MARKED PROGRESS IN CONSTRUCTION OF RESERVOIR

REPORT OF TREASURER

35

Dec. 3	E. Corey & Co. Steel	5 92
4	Braman, Dow & Co. Pipe and Fittings	60 84
4	Chadwick-Boston Lead Co. Sheet Lead	27 05
6	Cash for Pay Roll Nov. 28-Dec. 4	379 97
11	Maine Central Railroad Co. Freight	31 52
11	Braman, Dow & Co. Fittings	12 73
11	The Augusta Press Printing	37 24
11	Eagle Oil & Supply Co. Material and Supplies	66 68
13	Cash for Pay Roll Dec. 6-11	383 17
13	Kennebec Oil Co. Kerosene	9 00
15	New England Tel. & Tel. Co. Telephone Service	27 73
15	Central Maine Power Co. Lighting and Power Service	339 57
15	George E. Frye Repairing Clock	2 50
15	Grinnell Co. Pipe and Fittings	144 20
15	Darling Automobile Co. Automobile Supplies	9 20
15	W. S. Wyman Telephone Service	1 55
15	Maine Central Railroad Co. Freight	310 06
15	Taber & Reid Pipe and Fittings	8 52
16	Central Maine Power Co. Sundries	18 36
16	Wallace & Tiernan Co. Triplex Pump Parts	141 00
16	Rensselaer Valve Co. Tapping Sleeve and Valves	141 80
16	Brooks Hardware Co. Material and Supplies	11 21
16	Worthington Pump and Machinery Co. Inc. Pump Fittings	55 00
16	A. F. Pierce Rubber Coat and Hat	9 90
16	Purinton Bros. Co. Coal	140 00
16	Fifield Bros. Co. Automobile Supplies	2 79
16	Augusta Machine Shop Inc. Steel	2 28

Dec. 16	Waterville Motor Co. Recharging Battery	3 50
16	Taber & Reid Pipe and Bushing	3 09
16	Hussey Hardware Co. Gasoline and Supplies	61 29
20	Cash for Pay Roll Dec. 13-18	374 37
20	McLean, Fogg & Southard Law Expenditures	308 50
20	Maine Central Railroad Co. Freight	9 68
20	W. S. Wyman Salary for 1926	100 00
20	W. D. Hutchins Salary for 1926	100 00
20	E. E. Newbert Salary for 1926	100 00
24	Mansur Photo Laboratory Negatives and Prints	4 00
24	National Meter Co. Meters and Parts	139 50
24	Darling Automobile Co. Automobile Supplies	40 00
24	The Augusta Press Requisition Books	16 17
24	Harry T. Jose Labor and Material	75 31
24	Crosby Steam Gage & Valve Co. Repairing Steam Gage	2 35
24	Addressograph Co. Inspection	7 00
24	Electro Bleaching Gas Co. Liquid Chlorine	165 78
24	George Fuller's Sons Inc. Labor	2 50
24	American Brass Co. Brass Pipe	157 68
24	Macomber, Farr & Whitten Insurance	264 98
24	Titcomb Real Est. Ass'n. Land Rent	100 00
27	Cash for Pay Roll Dec. 20-25	294 52
27	Wyman & Simpson a-c New Reservoir	15,289 87
31	Augusta Trust Co. Contributed to Sinking Fund from Income Earnings	6,500 00
30	State Trust Co. Contributed to Sinking Fund from Income Earnings	2,000 00
30	Cash on Hand	\$759,859 41 43,518 06
	Total Disbursements for the year	\$803,377 47

SCHEDULE D

Disbursements of Receipts from Sinking Fund

Jan. 4	Augusta Trust Co. Augusta Water District Bonds and Interest....	\$1,017 00
Feb. 1	Deposit First National Granite Bank	146 51
	Deposit Augusta Trust Co.	1,349 43
April 24	Coffin & Burr Inc. Augusta Water District Bonds and Interest	1,513 83
30	Deposit Augusta Trust Co.	60 00
May 24	Deposit Augusta Trust Co.	290 95
Aug. 27	Deposit State Trust Co.	1,381 25
Sept. 30	Deposit Augusta Trust Co.	121 14
	Deposit First National Granite Bank	97 27
	Deposit State Trust Co.	60 00
Oct. 29	Deposit State Trust Co.	286 70
	Deposit State Trust Co.	6,301 55
	Harris, Forbes & Co. Inc. Augusta Water District Bonds & Interest	37,488 65
Nov. 10	Deposit First National Granite Bank (Sale of Bonds)	23,953 21
	Deposit Augusta Trust Co.	122 64
		<u>\$74,190 13</u>

SCHEDULE E

Statement of Sinking Fund, December 31, 1926

	Par Value	Book Value	Market Value
Augusta Water District 1934 Bonds	\$193,500 00	\$184,378 20	\$193,500 00
Augusta Water District 1953-54- 55-56 Bonds	38,000 00	37,361 98	38,000 00
Cash in First National Granite Bank		3,312 16	3,312 16
Cash in Augusta Trust Co.		9,244 36	9,244 36
Cash in State Trust Co.		7,029 50	7,029 50
		<u>\$244,326 20</u>	<u>\$251,086 02</u>

SCHEDULE F

Additions to Sinking Fund

Dec. 30	Paid from Receipts from Operations	\$8,500 00
---------	------------------------------------	------------

Respectfully submitted,

W. D. HUTCHINS,
Treasurer.

Report of Superintendent

Augusta, Maine, January 1, 1927.

To the Trustees of the Augusta Water District:

Gentlemen:

As Superintendent of the Augusta Water District, I herewith submit my report for the year ending Dec. 31st, 1926.

TABLE SHOWING THE HEIGHT OF WATER IN CARLETON POND WITH REFERENCE TO THE TOP OF THE OLD SPILLWAY

Month	1916	1917	1922	1923	1924	1925	1926
Jan. 1	-1' 7"	+1' 0"	-5' 0"	-0' 10"	-3' 2"	-4' 6"	-1' 6"
Feb. 1	-1' 11"	+1' 4"	-5' 6"	-0' 6"	-3' 1"	-5' 10"	-1' 9"
Mar. 1	-1' 1"	+0' 10"	-5' 11"	0' 0"	-2' 8"	-4' 4"	-2' 0"
April 1	-1' 4"	+2' 2"	-1' 6"	+1' 3"	-1' 0"	-1' 0"	-2' 2"
May 1	+2' 2"	+2' 0"	+0' 2"	+2' 9"	+2' 2"	0' 0"	+0' 10"
June 1	+2' 1"	+1' 11"	+1' 4"	+1' 8"	+1' 11"	-1' 0"	+0' 7"
July 1	+1' 10"	+2' 0"	+2' 0"	+1' 0"	+1' 0"	-1' 0"	0' 0"
Aug. 1	+1' 2"	+0' 11"	+1' 5"	+0' 2"	+0' 1"	-2' 0"	-1' 3"
Sept. 1	+0' 7"	+0' 6"	+1' 0"	-1' 3"	-1' 7"	-3' 4"	-2' 8"
Oct. 1	-0' 2"	-0' 4"	-0' 2"	-3' 0"	-2' 6"	-4' 4"	-3' 9"
Nov. 1	-0' 8"	0' 0"	-0' 8"	-3' 1"	-3' 5"	-3' 2"	-4' 3"
Dec. 1	+0' 3"	-0' 6"	-0' 9"	-2' 10"	-4' 0"	-2' 2"	-2' 6"
Dec. 31							-3' 0"

(Note: See 1916 report for previous records).

During the year 46 new service pipes were laid making a total of 2,785 services of all sizes now connected to the system. 62 services have been relayed, some due to worn out pipes and some to the fact that the previous pipe was too small for the present users' purposes.

SERVICES ADDED BY YEARS

To May 1, 1904	1,486
June 1, 1905	55
June 1, 1906	43
June 1, 1907	94
June 1, 1908	61
June 1, 1909	69

June 1, 1910	81
June 1, 1911	61
June 1, 1912	73
June 1, 1913	67
June 1, 1914	61
June 1, 1915	37
July 1, 1916	62
July 1, 1917	52
Dec. 31, 1917	16
Dec. 31, 1918	23
Dec. 31, 1919	18
Dec. 31, 1920	34
Dec. 31, 1921	62
Dec. 31, 1922	66
Dec. 31, 1923	97
Dec. 31, 1924	56
Dec. 31, 1925	65
Dec. 31, 1926	46

Total 2,785

FIRE HYDRANTS

One new hydrant has been set on Howard Street.

Eight Hydrants have been reset as follows:

One on North Chestnut Street

Two on Arsenal Street

One on Eastern Avenue

One on Front Street

One on Hichborn Street

One on Northern Avenue

One on Western Avenue

Total now connected with the system:

Public Hydrants, (west side) 88

Public Hydrants, (east side) 69

Private Hydrants 60

Total 217

LOCATION OF ALL FIRE HYDRANTS

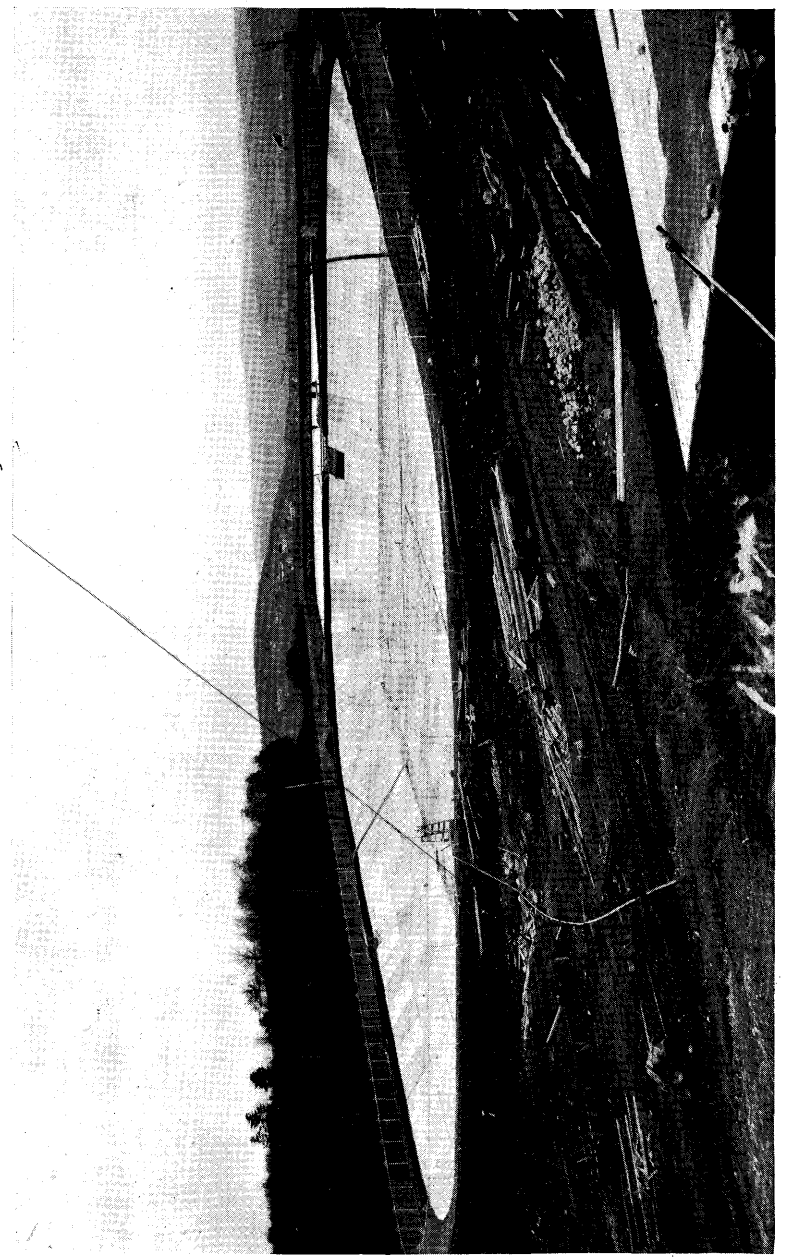
To December 31, 1926

West Side

Chapman (2)	No. 1	Northern Ave., opp. Franklin St.	4.2	O.K.	- P + G
Corey (2)	2	Franklin St., cor. Oxford St.	2.8	O.K.	- "
"	3	Washington St., cor. Franklin St.	7.1	O.K.	- "
Chap (2)	4	Northern Ave., cor. Jefferson St.	7.1	O.K.	- 11.4
"	5	Northern Ave., cor. Oxford St.	9.8	O.K.	- "
Corey (2)	6	Jefferson St., opp. Kendall St.	8.2	O.K.	- "
Chap. (2)	7	Washington St., cor. Waldo St.	8.	O.K.	- "
Chap. (2)	8	Northern Ave., cor. York St.	11.4	O.K.	Corey 3 way 14 ft
Corey (2)	9	Northern Ave., cor. Mill St.	14.8	O.K.	- "
"	10	Canal St., opp. Edwards Mfg. Co.	Removed.		
Corey (2)	11	Canal St., opp. Ice-house.	Gate on Washington St		
Corey (2)	12	Mill St., cor. Mt. Vernon Ave.	9.8	O.K.	- "
Corey (2)	13	Mt. Vernon Ave., 1000' north of Mill St.	4.8	O.K.	4.1
"	14	Mt. Vernon Ave., south of Mill St.	Removed		
Corey (3)	15	Bond St., halfway Water St. to Mt. Vernon Ave.	5.3	O.K.	- "
Corey (2)	16	Royal Park.	10.9	O.K.	- "
Corey (2)	17	State St., cor. Laurel St.	4.7	O.K.	- "
Corey (3)	18	Water St., opp. Laurel St.	6.3	O.K.	- "
Corey (3)	19	Water St., at Railroad Bridge	6.5	O.K.	- "
Corey (3)	20	Water St., nearly opp. City Hotel	4.	O.K.	- "
Corey (2)	21	Water St., cor. Bridge St.	Removed		
Corey (3)	22	Commercial St., cor. Bridge St.	10.2		
Corey (3)	23	Crosby St., opp. Crosby Place.	5.7		
Corey (2)	24	Bridge St., cor. State St.	3.		
Corey (2)	25	Bridge St., opp. Summer St.	4.		
Corey (3)	26	Bridge St., opp. Winter St.	2.7		
Corey (3)	27	North St., cor. Bridge St.	20.8		
Corey (2)	28	North St., near City Farm.	7.9		
Corey (2)	29	N. Chestnut St., halfway Bridge St., to Winthrop St.	4.2		
Corey (2)	30	Spring St., halfway Bridge St. to Winthrop St.	4.7		
Chap. (2)	31	Elm St., halfway Bridge St. to Winthrop St.	4.5		
Corey (3)	32	State St., cor. Oak St.	7.6		
Corey (2)	33	Church St., cor. Flagg St.	3.		
"	10	Winthrop St.	6.5		
Eddy - 2	1A	Cushman High + Waterward	3.4		
Corey (2)		Manual opp. Canal	2.2		

Math (4)	34	Water St., front of No. 211.			
Corey (3)	35	Front St., rear of No. 211.	4.2		
Corey (2)	36	Oak St., halfway Water St., to Commercial St.	on Commercial St		
Eddy (3)	37	Water St., cor. Winthrop St.	Gate in Car Barn 39.6		
Corey (2)	38	Dickman St., cor. Oak St.	18.3		
Corey (3)	39	Winthrop St., cor. Commercial St.	On Lot Box		
Corey (3)	40	Water St., at Augusta Steam Laundry.	10.9		
Chap. (2)	41	Court St., cor. Perham St.	4.9		
Corey (2)	42	Winthrop St., cor. State St.	6.9		
Eddy (3)	43	Chapel St., cor. Winthrop St.	2.1		
Corey (2)	44	Sewall St., cor. Winthrop St.	4.9		
Corey (2)	45	Sewall St., opp. Weston St.	5.6		
Corey (2)	46	South Chestnut St., opp. Court St.	0.8		
Corey (2)	47	Green St., opp. Cushman St.	5.7		
Chap. (2)	48	South Chestnut St., cor. Green St.	5.3		
Corey (2)	49	Western Ave., cor. South Chestnut St.	14.2		
Math (2)	50	Sewall St., cor. Lincoln St.	4.2		
Corey (2)	51	Lincoln St., cor. Drew St.	4.8		
Corey (2)	52	Melville St., halfway Green St., to Western Ave.	6.		
Chap. (2)	53	Chapel St., cor. Green St.	7.2		
Corey (2)	54	Chapel St., cor. Western Ave.	8.1		
Corey (2)	55	State St., near cor. Green St.	4.3		
Chap. (2)	56	State St., opp. Chandler St.	3rd - Refuse		
Corey (2)	57	Grove St., opp. East Crescent St.	6.4		
Corey (2)	58	Green St., cor. Grove St.	2.8		
Eddy (3)	59	Gage St., cor. Swan St.	4.6		
Math (2)	60	Gage St., at Shoe Factory.	14.2		
Corey (2)	61	Gage St., south of Shoe Factory.	3.8		
Math (2)	62	Child St., cor. Center St.	4.5		
Math (2)	63	Capitol St., halfway State St., to Gage St.	2.6		
Corey (2)	64	State St., nearly opp. Child St.	7.1		
" (2)	65	State St., at Augusta House.	9.7		
Chap. (2)	66	Grove St., opp. Chapel St.	6.6		
Math (2)	67	Sewall St., cor. Capitol St.	5.2		
" (2)	68	Sewall St., south of Capitol St.	7.8		
Corey (3)	69	State St., cor. Scott St.	20.7		
" (2)	70	State St., north of Car Barn.	8.1		

<i>Cony</i>	2	71	State St., opp. Glenwood St.	22.2
<i>AA</i>	2	72	Columbia St., opp. No. 12	7.5
<i>AA</i>	3	73	Chapel St., cor. Weston St.	4.6
<i>AM</i>	3	74	Higgins St., at Augusta House.	7.6
<i>AM</i>	2	75	Western Ave., cor. Florence St.	24.2
<i>AM</i>	2	76	Western Ave., near Gannett's.	5.1
<i>AM</i>	"	77	Prospect St., cor. Winthrop St.	18.6
<i>AM</i>	2	78	Prospect St., cor. Bennett St.	2.7
<i>AM</i>	2	79	Commercial St., rear of Cony House.	37.5 <i>not gone on gate</i>
<i>AM</i>	2	80	Front St., cor. Bridge St.	9.5
<i>AM</i>	"	81	Front St., at Augusta Yacht Club.	32.7 <i>west</i>
<i>AM</i>	3	82	Front St., rear of Masonic Temple.	4.
<i>Cony</i>	3	83	Front St., rear of Augusta Steam Laundry.	4.8 <i>32.9</i>
<i>Cony</i>	3	84	Sewall St., 800' south of hyd. No. 68.	6.
<i>AM</i>	3	85	Sewall St., 1600' south of hyd. no. 68.	24.6
<i>AM</i>	2	86	Winthrop Road, near Macomber Farm.	3.
<i>AM</i>	2	87	Orchard St., cor. Western Ave.	7.
<i>AM</i>	2	88	Sewall St., cor. Wade St.	2.3
<i>AM</i>	3	89	Sewall St., halfway from Western Ave. to Capitol St.	<i>Laughlin 2.2</i>
<i>Eddy</i>	3	90	Sewall St., halfway from Jackson St. to Glenwood.	<i>14.</i>
<i>Cony</i>	2	91	Sewall St., south of Glenwood.	<i>Stat @ Taylor 6.5</i>
<i>AM</i>	3	92	<i>Hillcrest St</i>	<i>4.8</i>
		93	<i>Grove St East Side</i>	<i>4.</i>
<i>AM</i>	2	101	Hospital St., cor. Gowell St.	7.8
<i>AM</i>	2	102	Hospital St., south of Arsenal Grounds.	7.3
<i>AM</i>	2	103	Stone St., cor. Eastern Ave.	19.8
<i>AM</i>	2	104	Davenport St., halfway Arsenal St. to Ballard St.	6.3
<i>AM</i>	2	105	Ballard St., cor. Eastern Ave.	2.6
<i>AM</i>	2	106	Eastern Ave., halfway Arsenal St. to Middle St.	7.8
<i>AM</i>	2	107	Arsenal St., opp. Augusta Lumber Co.	2.5
<i>AM</i>	2	108	Arsenal St., cor. Eastern Ave.	5.6
<i>AM</i>	2	109	Arsenal St., cor. Cedar St.	3.3
<i>AM</i>	2	110	Middle St., cor. Cedar St.	2.5
<i>AM</i>	2	111	Brooks St., cor. St. Catherine St.	5.8
<i>AM</i>	2	112	Arsenal St., cor. East Chestnut St.	3.4
<i>AM</i>	2	113	Middle St., cor. East Chestnut St.	4.7



SHOWING NEW RESERVOIR AND OLD ADJOINING

<i>Conroy</i> 2	114	Stone St., cor. East Chestnut St.	5.2
<i>Conroy</i>	115	Stone St., cor. Middle St.	2.5
<i>Conroy</i> 3	116	Arsenal St., south of Williams St.	6.3
<i>Conroy</i> 2	117	Williams St., cor. Howard St.	4.
<i>Conroy</i> 5	118	Bowman St., cor. Williams St.	7.5
<i>Conroy</i>	119	Cony St., cor. Bowman St.	8.8
<i>Conroy</i>	120	Willow St., 150 ft. north of Cony St.	
<i>Conroy</i>	121	Willow St., opp. Gannett's Publishing House.	
<i>Conroy</i>	122	Willow St., opp. Maple St.	
<i>Conroy</i>	123	Maple St., just south of Hume-Newhall Co.	12-2 ft
<i>Conroy</i>	1 24	Maple St., at Railroad Crossing.	3.8
<i>Conroy</i>	125	Bangor St., cor. Myrtle St.	7.6
<i>Conroy</i> 2	126	Cony St., cor. Arsenal St.	4.8
<i>Conroy</i> 2	127	Cony St., cor. Gannett St.	6.
<i>Conroy</i>	128	Cony St., cor. Stone St.	4.
<i>Conroy</i>	129	Cony St., cor. Pearl St.	5.3
<i>Conroy</i>	130	Cony St., cor. Pine St.	3.7
<i>Conroy</i>	131	Patterson St., cor. South Belfast Ave.	7.1
<i>Conroy</i>	132	Patterson St., cor. Pearl St.	13.4
<i>Conroy</i>	133	Petterson St., cor. Gannett St.	4.2
<i>Conroy</i>	134	School St., halfway Pearl St. to Gannett St.	4.2
<i>Conroy</i>	135	School St., 500' east of Pearl St.	3.2
<i>Conroy</i>	136	Bangor St., opp. School St.	4.6
<i>Conroy</i>	137	Pearl St., halfway Quimby St. to Murray St.	13.4
<i>Conroy</i>	138	Murray St., east of Pearl St.	6.
<i>Conroy</i>	139	South Belfast Ave., cor. Murray St.	3.2
<i>Conroy</i>	140	Bangor St., cor. Quimby St.	7.8
<i>Conroy</i>	141	Fowler St., cor. Pearl St. Ext.	4.9
<i>Conroy</i>	142	Bangor St., cor. North Belfast Ave.	3.5
<i>Conroy</i>	143	North Belfast Ave., opp. Ruel St.	10.4
<i>Conroy</i>	144	North Belfast Ave., west of James St.	3.
<i>Conroy</i>	145	Lock St., opp. Allen St.	11.
<i>Conroy</i> 2	146	Bangor St., cor. Prince St.	15.1
<i>Conroy</i>	147	Longwood Ave., cor. White St.	4.2
<i>Conroy</i>	148	Eastern Ave. Cushing	4.2
<i>Conroy</i>	149	Eastern Ave. Cushing	11.2
<i>Conroy</i>	150	Cony Road (20.5)	45° N.E.

151	Riverside Drive, cor. Clark St.	2.3
152	Riverside Drive, 1000' north of Clark St.	6.7
153	" " opp. Cheney's.	5.7
154	" " near Parker Savage's Res.	4.8
155	" " near Arthur Handy's.	4.7
156	" " "	
157	" " "	
158	" " "	
159	" " "	
160	" " "	
161	" " "	
162	" " "	
163	" " "	
164	" " "	
165	" " "	
166	" " "	
167	" " south of Crossman's.	4.2
168	" " " " McCone's.	4.6 12.4 4.5
169	" " " " rd. above McCone's.	7.6
170	" " " " Geo. L. Weeks.	4.6
171	" " " " E. Donovan's.	3.6
172-178	incl. not set	Comp S.E. Ave. 3.5
179	Howard St., 400 ft. south of Williams.	7.
Private Hydrants		
501	State St., at Car Barn.	
502	State House—west side.	2.8
503	State House—south side.	37.7 East
504	Pumping Station Yard (East Winthrop).	42.2 (East corner of Mill)
505	East Winthrop near Sub-station.	19.5
506	East Winthrop opp. Thurber's.	12.4
507	Edwards Mfg. Co.'s Yard.	
508	" " " "	
509	" " " "	
510	" " " "	
511	" " " "	
512	" " " "	
513	" " " "	
174	Hicks Road.	9.8
175	Learwitts Landing.	
213	East Winthrop.	12.5
212	" " "	Pumping Station
210	" " "	3.6
209	" " "	4.7 Country Club

514	Maple St., rear of Cushnoc Paper Co.	
515	Maple St., at Office of Cushnoc Paper Co.	7
516	Maple St., north of Paper Mill.	3.7
517	Augusta Lumber Co.'s yard.	
1-518	Arsenal grounds near Criminal Insane Building.	
2-519	Arsenal grounds just off 10" main.	
3-520	Arsenal grounds south of Burleigh Pavilion.	
4-521	Arsenal grounds north of Burleigh Pavilion.	
1-523	Maine Insane Hospital grounds.	
2-524	" " " "	
3-525	" " " "	
4-526	" " " "	
5-527	" " " "	
6-528	" " " "	
7-529	" " " "	
8-530	" " " "	
9-531	" " " "	
10-532	" " " "	
11-533	" " " "	
12-534	" " " "	
13-535	" " " "	
14-536	" " " "	
1-539	National Soldiers Home grounds.	
2-540	" " " "	
3-541	" " " "	
4-542	" " " "	
5-543	" " " "	
6-544	" " " "	
7-545	" " " "	
8-546	" " " "	
9-547	" " " "	
10-548	" " " "	
11-549	" " " "	
12-550	" " " "	
13-551	" " " "	
14-552	" " " "	
15-553	" " " "	

16-554	National Soldiers Home grounds.
17-555	" " " "
18-556	" " " "
19-557	" " " "
20-558	" " " "
21-559	" " " "
22-560	" " " "
23-561	" " " "
24-562	" " " "
25-563	" " " "

PUMPING STATION

The steam pump connected with Lake Cobbosseecontee has not been run since March 31st, 1912. All the water used since this date has been drawn from Carleton Pond.

TABLE SHOWING THE AVERAGE DAILY CONSUMPTION

Feb. 15, 1910 to Dec. 31, 1926

*Feb.	15, 1910	to	June 1, 1910	2,035,755 gallons
June	1, 1910	to	June 1, 1911	2,287,945 "
June	1, 1911	to	June 1, 1912	2,103,770 "
June	1, 1912	to	June 1, 1913	1,895,315 "
June	1, 1913	to	June 1, 1914	1,992,712 "
June	1, 1914	to	June 1, 1915	1,870,411 "
June	1, 1915	to	July 1, 1916	1,971,262 "
July	1, 1916	to	July 1, 1917	2,052,600 "
July	1, 1917	to	Dec. 31, 1917	1,975,978 "
Jan.	1, 1918	to	Dec. 31, 1918	2,086,301 "
Jan.	1, 1919	to	Dec. 31, 1919	2,066,600 "
Jan.	1, 1920	to	Dec. 31, 1920	2,245,000 "
Jan.	1, 1921	to	Dec. 31, 1921	2,299,780 "
Jan.	1, 1922	to	Dec. 31, 1922	2,200,932 "
Jan.	1, 1923	to	Dec. 31, 1923	2,339,940 "
Jan.	1, 1924	to	Dec. 31, 1924	2,409,864 "
Jan.	1, 1925	to	Dec. 31, 1925	2,388,801 "
Jan.	1, 1926	to	Dec. 31, 1926	2,951,150 "

*(Feb. 15, 1910: date of installation of Venturi Meter.)

24" x 9" VENTURI METER RECORD

Dec.	31, 1925	Reading of meter	545,800,000
Dec.	31, 1926	Reading of meter	1,623,070,000

Consumption for twelve months	1,077,270,000 gallons
Daily average for the year	2,951,150 "

RECORD OF MONTHLY CONSUMPTION OF WATER

Month 1926	Pumping Record Hours	Current Used Kw. Hours	Total Consumption Gallons	Daily Consumption Gallons
January	730½	19,160	87,590,000	2,825,484
February	655	17,070	84,290,000	3,010,356
March	712½	17,210	90,210,000	2,910,000
April	703½	15,650	87,230,000	2,907,666
May	402	12,750	85,220,000	2,749,032
June	378½	12,240	85,010,000	2,833,666
July	579½	19,070	100,390,000	*3,238,387
August	618¾	18,320	96,420,000	*3,110,322
September	546½	17,970	86,910,000	2,897,000
October	556½	17,960	88,220,000	2,845,806
November	518	16,660	90,760,000	3,025,333
December	681	21,740	98,430,000	†3,175,161
Total	7,082¼	205,800	1,077,270,000	2,951,150

*During July and August the Contractor building the new Distributing Reservoir used a large amount of water in sprinkling the earth embankment (allowed by contract).

†Filling new Reservoir raised the daily average consumption in December.

DISTRIBUTION PIPES AND GATES LAID TO DEC. 31, 1926.

Size of Pipe	Cast Iron Pipe		Galvanized Iron Pipe		Gates	
	1926	Total	1926	Total	1926	Total
24"	1046	34,901			3	8
20"	28	12,224			1	6
16"		15,252			0	17
12"	177	14,350			1	17
10"		14,177			0	15
8"	4,033	42,570			4	19
6"	4,013	117,008			24	193
4"		2,402			0	3
2"			1126	55,209	7	127
1¼"				1,187	0	4
1"				1,781	0	1
¾"				377	0	1
6" Hydrant Valves					1	157
Pipe Laid						
1926	9,297	252,884	1126	58,554	41	568
Total pipe						
Cast Iron		252,884 feet or 47.89 Miles				
Galvanized		58,554 feet or 11.09 Miles				
Total		58.98				

Of the above scheduled pipe all the new 24", 20", and 12" was laid in connection with the new Distributing Reservoir. About 400 feet of 24" pipe was removed and relaid in another location.

Street	Length and Size of Pipe Laid			Gates Set		Hyd Set	Total Cost	Cost per ft.
	2"	6"	8"	2"	6"			
Charles		131				1	\$ 252 37	\$1 92
Congress		390				4	1,052 24	2 69
Court St. Place	281					1	232 17	83
First Ave		90				2	211 76	2 35
George		84					239 14	2 85
Greene			635			1 1	1,587 89	2 50
Grove St. Ext.		266				1	541 00	2 03
Howard		382				2	712 53	1 86
Lower Sewall		110				1	258 39	2 35
Mount Vernon Ave. .	560					2	481 32	86
Murray	67					1	126 94	1 89
Myrtle			839			1 1	2,047 00	2 44
North Belfast Ave. .		610				1	1,195 03	1 96
Northern Ave.			900			1 1	2,884 51	2 87
Pearl		60	428			2	1,472 91	3 02
Royal Park		310				1	597 58	1 92
Second Ave.		450				3	1,498 45	3 33
State St.			640			1	1,576 89	2 46
Swan			591			1 1	1,801 98	3 05
Western Ave.		1,130				1	3,197 75	2 83
Wyman Court	218					3	301 70	1 38
	1,126	4,013	4,033	7	24	4	1	\$21,969 54

REVIEW OF OPERATIONS FOR 1926

During the past year much has been done to improve the system of the District. Many extensions of mains have been made, the major works as follows:—1130 feet of 6" pipe on Western Avenue, 900 feet of 8" pipe on Northern Avenue, 839 feet of 8" pipe on Myrtle Street, 635 feet of 8" pipe on Greene Street, 610 feet of 6" pipe on North Belfast Avenue, 640 feet of 8" pipe on State Street, 560 feet of 2" pipe on Mount Vernon Avenue, 591 feet of 8" pipe on Swan Street, 450 feet of 6" pipe on Second Avenue, and 428 feet of 8" pipe on Pearl Street.

Also, this past year there was built a ten million gallon distributing reservoir adjacent to the old one of six million gallon capacity which was built in 1886. The two together hold sufficient water to supply the city for about 6 days in case of damage to the pumps or pipe line between the reservoir and Carleton Pond.

This new reservoir was built under contract with Wyman and Simpson of Augusta and Waterville under the supervision and from the designs of Metcalf and Eddy, Consulting Engineers, of Boston. Work was commenced on May 25th when the Contractor began to clear the site of trees, brush, and boulders. All stumps, sod, loam and topsoil were removed and the loam saved for future dressing of the slopes of the embankment. Excavation was then started, the material removed being carried to the North side of the site and deposited in six inch layers and rolled with a heavy tractor to form the North side of the reservoir. This work was carried on until the old 24" supply pipe from Carleton pond was uncovered. It was found that this pipe was higher than the proposed bottom of the new reservoir and a new line had to be laid beneath the floor. This new pipe was laid and tested under a pressure of 150 pounds per square inch in order to be certain that there were no defective pipes in the line. This new pipe was connected to the old outside of the limits of the new reservoir, the work being done August 7th and the water turned on again. The old pipe was then removed from the East end of the new reservoir as far as the inside of the West end. From there to the connection between the two lines the old pipe was left in place to become the inlet supply for the new Reservoir.

At the East end of the reservoir an outlet pipe was placed with a gate. This pipe was carried nearly level around the South and East sides of the old reservoir to a point near the outlet where the two were connected together and the water then carried to the city thru the original mains.

Work was completed on December 4th except for slight amount of grading of slopes, grassing of surfaces, and cleaning up, which work will be completed by the Contractor after the frost is out of the ground in the spring.

The earth embankment is formed from material excavated to make the South inside lining slope and thoroughly rolled and compacted. The entire inside of the bowl was then covered with an 8 inch layer of blue clay rolled and compacted in place, except for the top six feet around the edge which was

covered with a similar layer of screened gravel to provide drainage and protect the lining from displacement due to frost action. The clay and gravel blanket were then covered with a reinforced concrete lining six inches thick formed in squares about 12 feet on each side. Across the joints between squares was placed a steel plate eight inches wide and three sixteenths of an inch thick. Below this plate was a half inch thickness of an asphaltic material in sheets. Above, a V-shaped groove around each square was filled with hot asphalt. The purpose of this construction was to provide an expansion joint to prevent breakage of the lining due to temperature changes and at the same time prevent water from leaking through.

Between the two reservoirs a concrete spillway was constructed so that neither could become dangerously full. When both are full to this spillway the excess water will flow over a second spillway which is situated in the North embankment. This is a concrete lined gutter down the slope leading to a gulley through the woods and so to Bond Brook.

Around the top is placed a hurricane type of fence topped with barbed wire designed to keep animals and trespassers from contaminating the water supply. Two surface ditches run the whole length of the South side which will collect surface water and lead it beyond the limits of the reservoir and tend to keep the water pure.

Running through the bottom is a gutter built into the lining toward which the whole lining slopes. This gutter slopes gradually to its end at a 12 inch pipe through the North embankment allowing every drop of water to be drained out for cleaning purposes.

Two flights of stairs are also built into the lining, one on each side. These are for the purpose of descending to the bottom for cleaning and also have figures painted on the risers in order to determine the amount of water in the reservoir at any time without going inside the fence.

The following quantities of materials were used in the construction:

34,490	c. y. Earth Excavation for Reservoir.
1,213	c. y. Earth Excavation for Trenches less than 9 feet deep.
395	c. y. Earth Excavation for Trenches below 9 foot depth.
569	c. y. Rock Excavation.
8,470	sq. y. Grassed surface.
2,147	c. y. Clay blanket.
256	c. y. Screened gravel.
2,163	c. y. Concrete lining in Reservoir.
279	c. y. Concrete masonry.
169,200	pounds steel reinforcing.
16,158	lineal feet of expansion joint.
366	feet of 24" cast iron pipe removed, cleaned and recoated.
64	feet of 12" cast iron pipe removed, cleaned and recoated.
665	feet new 24" cast iron pipe laid.
28.5	feet new 20" cast iron pipe laid.
177	feet new 12" cast iron pipe laid.
381.4	feet salvaged 24" cast iron pipe laid.
51.5	sq. y. stone paving.
1,160	feet of cyclone fence.

CONDITION OF THE PROPERTY OF THE DISTRICT

Carleton Pond: There is at present about four months supply of water in the pond. The dam and gate house are in good condition. It is planned to set out about ten thousand more pine and spruce trees on the shores this spring.

Pumping Station: The station structure is in good condition. The pumps are working satisfactorily, those driven by electricity at present doing all the pumping necessary, but will soon have to be replaced by a larger size. They at present are pumping nearly to capacity. The steam pump connected to Cobbosseecontee has not been run since March 31st, 1912, but is still in good condition and could be used in case of

emergency. All water used since that date has come from Carleton Pond.

Pipe line: No leaks or trouble of any sort have been detected during the past year.

Reservoir: The old reservoir is in excellent condition. The new one is complete and ready for service after a thorough cleaning out in the spring.

Distribution Mains: The mains in the city are all in good condition and water tight. A few leaks have been discovered and immediately repaired during the year. None of any serious nature occurred. Many major additions have been made, carrying out the recommendations of Metcalf & Eddy.

Administration Buildings: The new building housing the garage, shop and store room is now occupied and equipped. The new office building containing the accounting room, superintendent's office and Trustees' room was finished and occupied in the spring.

In closing this, the twenty-second annual report of the Augusta Water District and the first of my administration, I wish to express my appreciation for their many courtesies and hearty cooperation to the Trustees; to Mr. Wesley W. Albee, resigned; to Mr. Ellis, foreman; and all of the employees of the District.

Respectfully submitted,

SIDNEY S. ANTHONY

Superintendent



SUPT. SIDNEY S. ANTHONY

AUGUSTA WATER DISTRICT
AUGUSTA, MAINE

APRIL 7, 1950

RIVERSIDE DRIVE HYDRANT
RELOCATIONS

HYDR. NOW LOCATED
NO.

MOVE TO

4.9.35.2 + 20 OKO North of CocaCola

West 30 feet *33" Pipe 1-6' gate*

x 60 OKO Lee's

West and connect to new 10"

+ 98 OKO Savage 20.7

West 15 ft

x 136 OK Handy ✓ 7.9 7.9

to North side Brookside Ave

x 174 OK Wyman 9.

North 60 ft and connect to new 10"

x 216 Radsky 3.8

to Webster's new street, East side

? 234 254 OKO Catland ✓ 14.6 *gate*

West 10 feet

x 298 ~~Daggett~~ *Moore* 9.5 *gate*

South to Riverside Market

x 330 OK Colburn 4.2

South 20 feet

x 374 Aug. Prov. Co.

to Blair Road, East side

406 OKO Gingras 11.1 *to gate*

West 7 feet

OK 4-11-51 448 Lajole 2.9

No change

OK 4-17-51 490 OKO Pinette -16-2 *gate*

West 8 feet *9" 6" pipe*

OK 4-11-51 532 OKO Maxim 17.5 *gate*

West 15 feet - *OK 8" pipe*

OK 4-11-51 x 568 Robbins ✓ 3.2

West 5 feet

OK 4-11-51 610 OKO Trask ✓ 21.2 *gate*

West 15 feet - *OK 8" pipe*

OK 4-10-51 656 McCone 12.5

West 10 feet

698 Stevens Rd

No change

OK 4-10-51 734 Weeks 4.8

No change

2 way Pipe 786 OKO, Bachelder 14.4

West 10 feet *Gate Pipe Top 12" pipe 2 feet*

MEMORANDUM

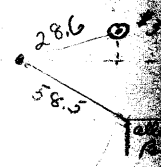
193

To _____

FROM _____

WEST SIDE HYDRANTS** GATE LOCATIONS MISSING

- 21 Water & Bridge ft. 23
- 36 Oak & Water ft. N.W.
- 37 Water & Winthrop ft. N.E.
- 34 Water @ # 211 ft
- 39 Winthrop & Commercial ft. South 28.6 →
- 56 State & Chandler ft.
- 60 Gage @ Shoe Fact. ft.
- 69 State & Scott 20.7 ft.
- 82 Front, @ Masonic Bldg 7. ft.
- 84 Sewall @ 143 6. ft.
- 93 Grove, between Manley & Glenwood 4.3 ft.
- 90 State @ Hallowell Line 14 ft.
- 91 State & Taylor ft.



IN REPLY TO ABOVE:

MEMORANDUM

193

To _____

FROM _____

- 148 N. Belfast & Pinehurst 4.2 ft.
- 173 Togus Rd. @ Leavitts Crossing
- 174 Hicks Road 5.8
- 200 Augusta Country Club
- 210 North Shore
- 211 Pumping Station
- 212 Case Road
- 213 Old Parsonage
- 502 State House, West Side
- 503 " " East Side
- 515 Cushnoc Office
- 516 Cishnoc New Mill 3.7
- 517 Augusta Lumber Co.

IN REPLY TO ABOVE:



MEMORANDUM

4-21

1936

TO Locate Hydrant Gages

FROM

Dist

Direction

Northern Ave @ Mrs Lacombes Eddy 3.4
 Water & Bridge - 23.

Eddy Water @ # 211 5.8

Oak & Water 15.1 From cor. of Grant National Bank (Book Page 33)

→ Winthrop & Commercial 28.6

State & Chandler Creek 42.7

IN REPLY TO ABOVE: Gage @ Shoe Factory 3.8

State & Scott 20.7

Front-Rear of Steam Laundry 32.9 S.W.

Small @ #143

State @ Hollowell Line 14.

State @ Taylor 6.5

Grove & Bet. Manley & Glenwood 4.

FORM NO. 9, N. L. FOLGER CO., 61 WHITEHALL ST., NEW YORK.

MEMORANDUM

4-21

1936

TO

FROM

N. Belfast & Pinehurst 4.2

Togus Road @ Leavitts Crossing 7.3

Hicks Road 5.8

Augusta Country Club 4.7

Winthrop - No. Shore 3.6

" Pump. Sta. 42.8 in line with S. cor. of Building

IN REPLY TO ABOVE:

" Case Road 19.5

" Harry Cushman's 12.4

State House - West 2.8

- East 37.7 East

FORM NO. 9, N. L. FOLGER CO., 61 WHITEHALL ST., NEW YORK.