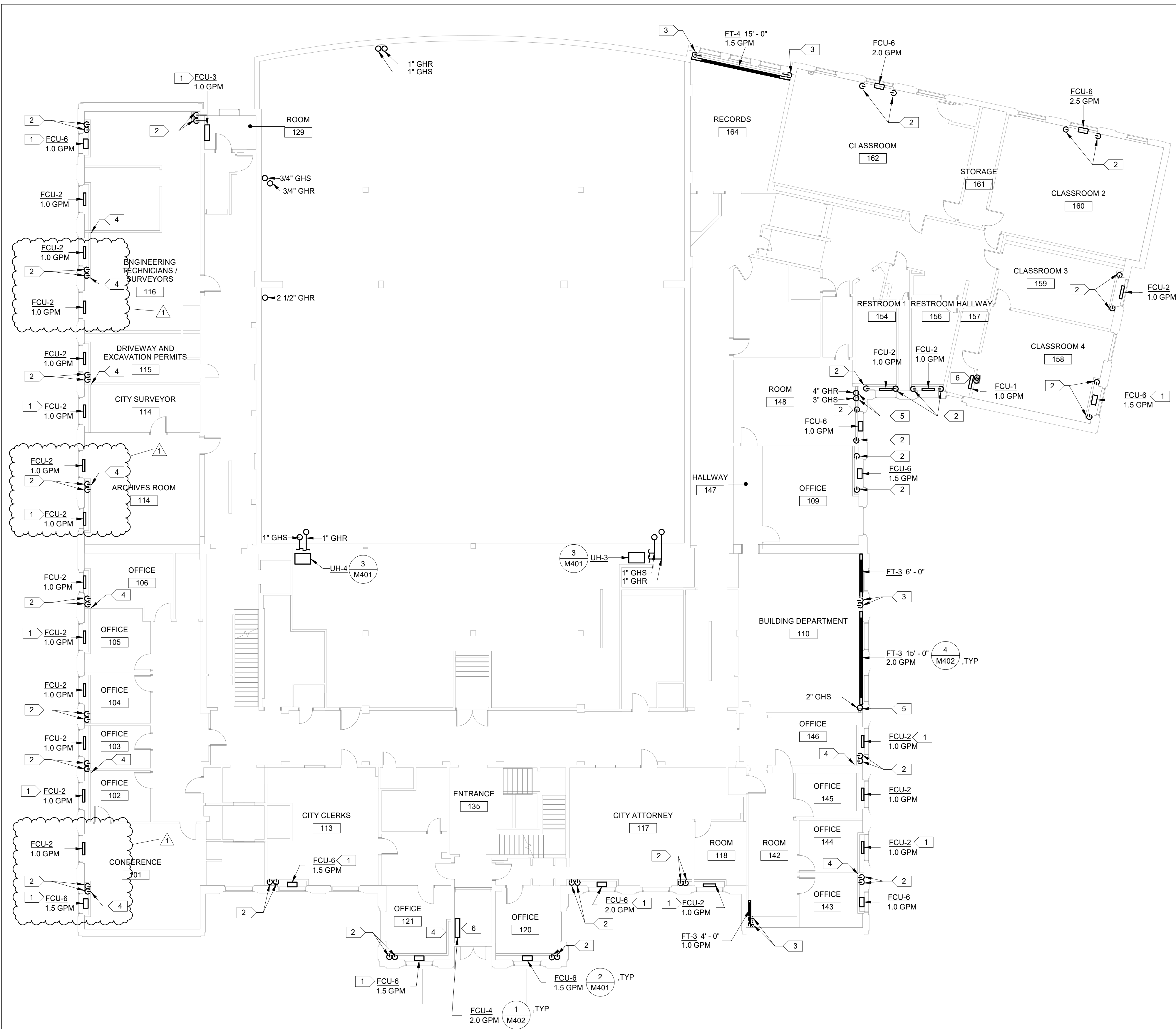


GENERAL NOTES

1. SIZE GHS&R PIPING TO HEATING TERMINAL UNITS IN ACCORDANCE W/ GHS&R PIPE SCHEDULE ON M001 UNLESS OTHERWISE NOTED.
2. PIPE ROUTING TO HEATING TERMINAL UNITS IS SHOWN DIAGRAMMATICALLY AND OFFSET FOR CLARITY. COORDINATE BRANCH PIPING IN CHASES AND WALL FURRING ACCORDING TO ARCHITECTURE.
3. PAINT EXPOSED PIPE INSULATION AND JACKETING TO MATCH ADJACENT FINISH.
4. BUILDING CONTAINS HAZARDOUS MATERIALS THAT WILL BE IMPACTED BY NEW WORK. SEE H SHEET SERIES FOR HAZARDOUS MATERIAL REQUIREMENTS.

SPECIFIC NOTES

1. RIGHT HAND COIL CONNECTION.
2. REUSE EXISTING FIRST FLOOR PENETRATION. ROUTE 3/4" GHS&R WITHIN CHASE TO HEATING TERMINAL UNIT. SEE ARCHITECTURE FOR CHASE.
3. REUSE EXISTING FIRST FLOOR PENETRATION. ROUTE 3/4" GHS&R UP INTO FINNED TUBE CABINET.
4. TWO HEATING TERMINAL UNITS SERVED BY ONE FLOOR PENETRATION. ROUTE 3/4" GHS&R WITHIN CHASE AND THROUGH WALL TO HEATING TERMINAL UNIT. PROVIDE ISOLATION VALVES, BALANCE VALVE, CONTROL VALVE, AND ASSOCIATED APPURTENANCES WITHIN CHASE. PROVIDE ACCESS PANEL IN CHASE FOR MAINTENANCE ACCESS TO VALVES.
5. CORE DRILL NEW FLOOR PENETRATION IN FIRST FLOOR. REFER TO H SHEET SERIES FOR HAZARDOUS MATERIAL REQUIREMENTS.
6. PROVIDE FAN COIL UNIT WITHOUT HYDRONIC CONTROL VALVE (WILD FLOW) AT BUILDING ENTRANCES.



1 FIRST FLOOR MECHANICAL PLAN
M210 3/32" = 1'-0"

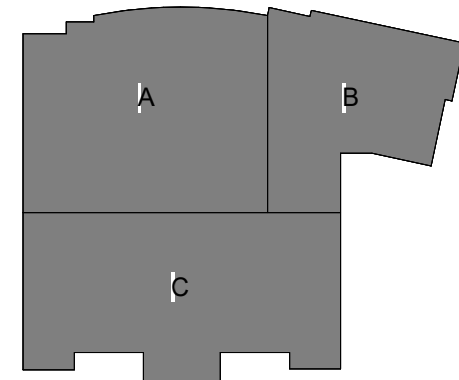


1 ADDENDUM 1 12 MAY 2026

CITY HALL HEATING SYSTEM REPLACEMENT

ISSUE DATE 21 AUG 2025
COMM. NUMBER 202401
DESIGNED BY BAB
DRAWN BY MJA
SCALE 0" = 1"

FIRST FLOOR MECHANICAL PLAN



KEYPLAN

M210