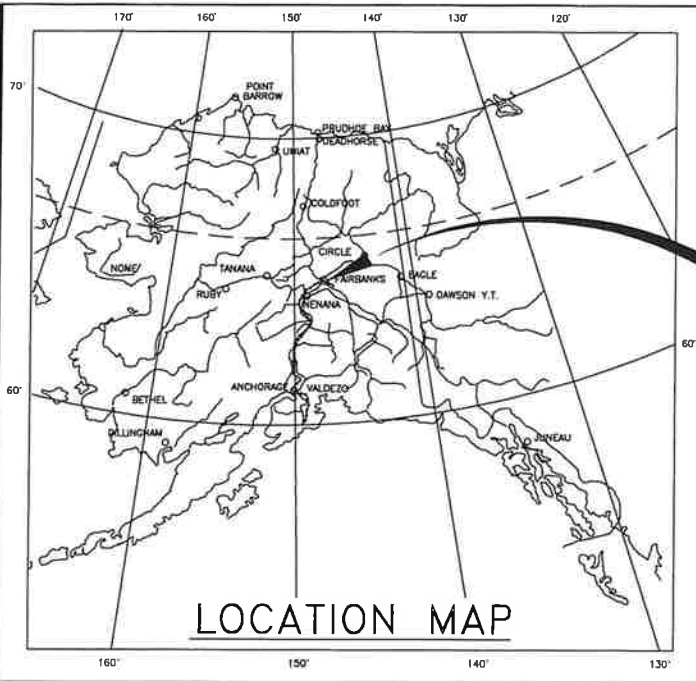




CITY OF FAIRBANKS

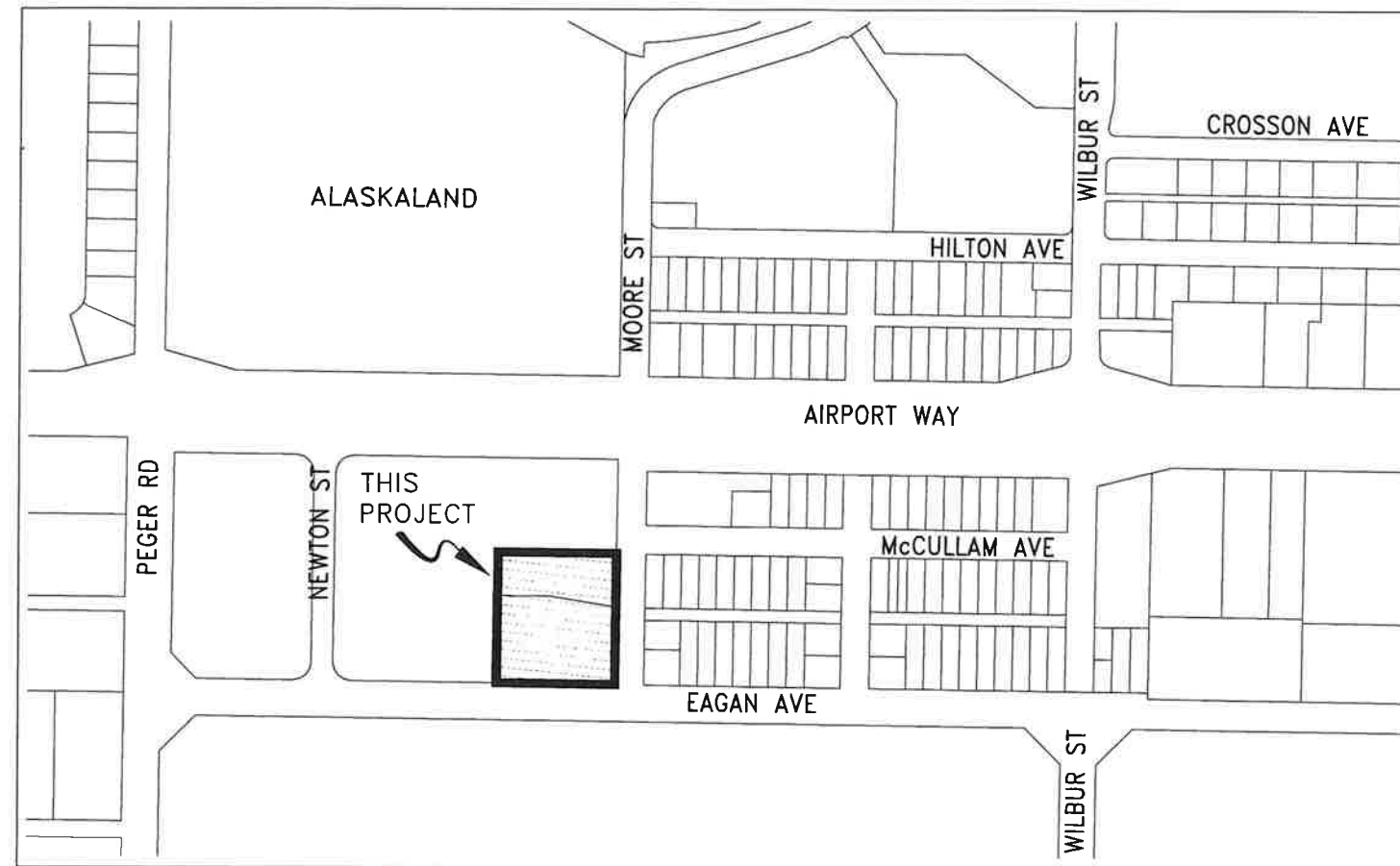
PROJECT #: ITB-26-15

MOORE ST. SENIOR APARTMENTS
PARKING LOT IMPROVEMENTS



PROJECT
LOCATION

INDEX OF SHEETS	
SHEET NO.	DESCRIPTION
A1	TITLE SHEET
A2	LEGEND
A3	GENERAL NOTES & ABBREVIATIONS
B1	TYPICAL SECTIONS
C1	ESTIMATE OF QUANTITIES
G1 - G4	GRADING
H1	SIGNING & STRIPING
CD1 - CD2	CITY OF FAIRBANKS STANDARD DETAILS - CONCRETE
SD1 - SD2	CITY OF FAIRBANKS STANDARD DETAILS - STORM DRAIN



VICINTY MAP

P:\Senior Center & Moore Street Apartments\ASPHALT PARKING LOT\Civil3D Dwg Files\3 Production\Title Sheet-Title Sheet Mon, Jun/22/26 02:15pm

DATE	REVISION	BY

SCALE:

DESIGNED: WKR/KLL
DRAWN: WKR
CHECKED: KLL
DATE:

APPROVED

CITY ENGINEER
DATE



**MOORE ST. SENIOR APARTMENTS
PARKING LOT IMPROVEMENTS**

**CITY OF FAIRBANKS, ALASKA
Engineering Department
Project ITB-26-15**

A1
OF
SHEETS

P:\Senior Center & Moore Street Senior Apartments\ASPHALT PARKING LOT\Civil3D Dwg Files\3 Production\Legend-LEGEND Mon, Jun/22/25 02:18pm

	RECOVERED	SET		EXISTING	PROPOSED		EXISTING	PROPOSED		EXISTING	PROPOSED
PRIMARY MONUMENT			SANITARY SEWER			ROADWAY/PAVEMENT EDGE			JUNCTION BOX, TYPE IA		
CENTERLINE MONUMENT IN CASING			FUEL LINE			FENCE			JUNCTION BOX, TYPE II		
PRIMARY R.O.W. MONUMENT			GAS LINE			CURB AND GUTTER			JUNCTION BOX, TYPE III		
BEARING OBJECT			WATER LINE			DETECTABLE WARNINGS			SIGNAL FACE, VEHICULAR		
MISCELLANEOUS MONUMENT			METER, VALVE, FIRE HYDRANT			GUARDRAIL			SIGNAL FACE, BACKPLATE		
LINE OF SIGHT MONUMENT			EXISTING STORM DRAIN (FLOW DIRECTION →)			CULVERT PIPE			SIGNAL FACE, LEFT TURN, BACKPLATE		
CONCRETE R.O.W. MONUMENT			PROPOSED STORM DRAIN			SIGN			SIGNAL FACE, PEDESTRIAN		
BENCHMARK			FIBER OPTIC LINE			MAILBOX			LOOP DETECTOR		
REBAR AND CAP			DIRECT BURIAL TELEPHONE CABLE			RAILROAD TRACKS			VIDEO DETECTOR		
REBAR			ELECTRIC DUCT			RAILROAD DEVICES			RADAR DETECTOR		
IRON PIPE			ELECTRIC LINE (OVERHEAD)			TREE LINE			OPTICOM DETECTOR		
PK NAIL			POWER POLE LINE			WATER BOUNDARY			PEDESTRIAN PUSH BUTTON		
SPIKE			JOINT USE POWER & TELEPHONE			ORDINARY HIGH WATER LINE			SIGNAL POST W/O MAST ARM		
HUB AND TACK			TELEPHONE POLE LINE			FLOW CENTERLINE			SIGNAL POLE W/MAST ARM		
CONSTRUCTION CENTERLINE			POLE ANCHOR			FLOW DIRECTION			SIGNAL CONTROLLER		
MISCELLANEOUS CENTERLINE			STUB POLE (POWER OR TELEPHONE)			WETLANDS			LOAD CENTER		
STATION EQUATION	$\frac{L^2 48+97.23 \text{ POT BK} =}{O^2 48+97.23 \text{ PC AHD}}$		ACS TELEPHONE DUCT			EXISTING BUILDINGS			LUMINAIRE		
PROJECT RIGHT-OF-WAY LINE			GCI TELEPHONE DUCT			POST OR BOLLARD			RIGID METAL CONDUIT		
EXISTING RIGHT-OF-WAY LINE			TELEPHONE PEDESTAL			WELL OR MONITORING WELL					
EXISTING PROPERTY LINE			BURIED CABLE MARKER			SEPTIC PIPE					
CONTROLLED ACCESS LINE			PIPELINE MARKER OR VALVE			FUEL TANK FILL PIPE/VENT					
UTILITY EASEMENT LINE			CATCH BASIN OR DROP INLET			SATELLITE DISH					
TEMPORARY EASEMENT LINE (TCP OR TCE)			MANHOLE			TEST HOLE					
ACCESS OR SECTION LINE EASEMENT			SANITARY SEWER CLEAN OUT			CONIFER TREE					
PROPOSED CUT SLOPE LIMIT						DECIDUOUS TREE					
PROPOSED FILL SLOPE LIMIT						PARKING METER					
SECTION LINE						VEHICLE PLUG-IN					
1/4 SECTION LINE						SHRUB					
1/16 SECTION LINE											
TOWNSHIP & RANGE LINE	$\frac{T. 2 N.}{T. 1 N.} \quad \frac{R. 2 E.}{R. 1 E.}$										

H = HOUSE
 G = GARAGE
 M = MERCHANT/STORE
 B = BARN
 S = SHED
 P = PRIVY
 SS = SERVICE STATION
 W = WAREHOUSE

LEGEND



			SCALE:	DESIGNED: COF STAFF	APPROVED	 MOORE ST. SENIOR APARTMENTS PARKING LOT IMPROVEMENTS	CITY OF FAIRBANKS, ALASKA Engineering Department Project ITB-26-15	A2 OF SHEETS
				DRAWN: COF STAFF	_____			
				CHECKED: COF STAFF	CITY ENGINEER			
DATE	REVISION	BY		DATE:	DATE			

ABBREVIATIONS

ABD - ABANDONED
 AC - ASPHALT CONCRETE
 AP - ANGLE POINT
 ABC - AGGREGATE
 BASE COURSE
 BK SDWK - BACK OF SIDEWALK
 BLDG - BUILDING
 BL - BASELINE
 BOP - BEGINNING OF PROJECT
 BV - BUTTERFLY VALVE
 C - CONDENSATE CB - CATCH BASIN
 CC - CURB CUT
 CI - CAST IRON
 CL - CENTER LINE
 CONC - CONCRETE
 CS - CONDENSATE SERVICE
 CSP - CORRUGATED STEEL PIPE
 D - DUCT BANK
 DIP - DUCTILE IRON PIPE
 DL - DITCH LINE
 DG - DOWN GUY
 DW - DRIVEWAY
 E - EAST
 e - SUPERELEVATION
 EA - EACH
 ELEV - ELEVATION
 EOP - END OF PROJECT
 EP - EDGE OF PAVEMENT
 ES - END SECTION
 EXIST - EXISTING
 FG - FINISH GRADE
 FH - FIRE HYDRANT
 FL - FLOW LINE
 FLG - FLANGE
 FOC - FACE OF CURB
 FRM - FRAME
 FW - FLUSHWELL
 G - GUTTER
 GP - GRADE POINT
 GRP - GUARD POST
 GR - GRADE
 GRT - GRATE
 GV - GATE VALVE
 HB - HORIZONTAL BEND
 HDPE - HIGH DENSITY POLYETHYLENE
 HPS - HIGH PRESSURE SODIUM LUMINAIRE
 HWR - HOT WATER RETURN
 HWS - HOT WATER SUPPLY
 HWSS - HOT WATER SERVICE SUPPLY
 ID - INSIDE DIAMETER
 IE - INVERT ELEVATION
 INS - INSULATION
 L - LENGTH OF CURVE
 LTDL - LEFT DITCH LINE
 LT - LEFT
 LF - LINEAL FEET
 MAX - MAXIMUM
 MB - MAILBOX
 MH - MANHOLE
 MIN - MINIMUM
 MON - MONUMENT
 MV - MERCURY VAPOR LUMINAIRE
 NC - NORMALLY CLOSED
 NE - NORTHEAST
 NW - NORTHWEST
 N - NORTH
 N.I.C. - NOT IN CONTRACT
 OD - OUTSIDE DIAMETER
 OG - ORIGINAL GROUND
 PC - POINT OF CURVATURE
 PCC - POINT OF COMPOUND CURVE
 PI - POINT OF INTERSECTION
 PIV - POST INDICATOR VALVE
 PL - PROPERTY LINE
 POT - POINT ON TANGENT
 PRC - PROPERTY CORNER
 PP - POWER POLE
 PT - POINT OF TANGENCY
 PLVC - POLYVINYL CHLORIDE
 PUE - PERMANENT UTILITY EASEMENT
 PVC - POINT OF VERTICAL CURVATURE
 PVI - POINT OF VERTICAL INTERSECTION
 PVMT - PAVEMENT
 PVT - POINT OF VERTICAL TANGENCY
 R - RADIUS
 RTDL - RIGHT DITCH LINE
 RMC - RIGID METAL CONDUIT
 ROW - RIGHT OF WAY
 R&R - REMOVE AND REPLACE
 RT - RIGHT
 RPM - REINFORCED PLASTIC MORTAR
 SMTA - SELECTED MATERIAL TYPE A
 s - SLOPE
 S - SOUTH
 SE - SOUTHEAST
 SM - SEWER MAIN
 SMH - SEWER MANHOLE
 SMHS - SEWER MANHOLES
 SCH - SCHEDULE
 SD - STORM DRAIN
 SI - STREET INTERSECTION
 SL - STREET LIGHT
 SP - STEEL PIPE
 SS - SEWER SERVICE
 ST - STEAM
 STA - STATION
 STS - STEAM SERVICE
 SW - SOUTHWEST
 T - TELEPHONE
 TC - TOP OF CURB
 TCP - TEMP. CONSTRUCTION PERMIT
 TOC - TOP OF CONDUIT
 TOP - TOP OF PIPE
 TYP - TYPICAL
 UG - UNDERGROUND
 VB - VALVE BOX
 W - WEST
 WM - WATER MAIN
 WS - WATER SERVICE
 WSP - WOOD STAVE PIPE

GENERAL NOTES


- GRADES, ALIGNMENTS, APPROACH LOCATIONS, LENGTHS AND LOCATIONS OF CONDUIT RUNS SHOWN ON THESE PLANS ARE SUBJECT TO MINOR REVISIONS BY THE ENGINEER. ALL DISTANCES SHOWN IN THE PLANS ARE HORIZONTAL MEASUREMENTS.
- SAWCUT ALL MATCH LINES WHERE NEW CONSTRUCTION OF PAVEMENT, SIDEWALK OR CURBING ABUTS EXISTING. SAWCUTS SUBSIDIARY TO RESPECTIVE PAY ITEMS.
- APPLY WATER FOR DUST CONTROL DAILY OR AS DIRECTED BY THE ENGINEER. PAY SUBSIDIARY TO PAY ITEM 643.0002.0000 TRAFFIC MAINTENANCE.
- PAYMENT FOR PAY ITEM 202.0001.0000 REMOVAL OF STRUCTURES AND OBSTRUCTIONS SHALL BE A LUMP SUM PAYMENT FOR REMOVING ALL ITEMS IN CONFLICT WITH THE IMPROVEMENTS. THESE ITEMS ARE NOT LISTED. IT IS THE CONTRACTORS RESPONSIBILITY TO FIELD VERIFY THE NATURE OF THIS WORK BEFORE BIDDING.
- ALL PAYMENTS REQUESTED BY THE CONTRACTOR SHALL BE DEVELOPED BY THE CONTRACTOR IN A FORM ACCEPTABLE TO THE ENGINEER. PAY ESTIMATES SHALL BE SUBMITTED BY THE CONTRACTOR AND APPROVED BY THE ENGINEER.
- CONTRACTOR IS RESPONSIBLE FOR PROVIDING THEIR OWN STAGING AREA.
- NUMEROUS UNDERGROUND UTILITIES EXIST WITHIN THE PROJECT CORRIDOR. THE CONTRACTOR SHALL CONTACT UTILITY OWNERS AND GET LOCATES PRIOR TO EXCAVATION.
- PRESERVE AND PROTECT EXISTING LANDSCAPE AND FENCING IN PLACE. SUBSIDIARY TO PAY ITEM 202.0001.0000.
- CONTRACTOR TO REMOVE EXISTING ASPHALT PAVEMENT AS SHOWN ON PLAN. CONTRACTOR TO DELIVER ASPHALT PAVEMENT TO THE CITY OF FAIRBANKS PUBLIC WORKS YARD AT 2121 PEGER ROAD. PAY SUBSIDIARY TO ITEM 202.0001.0000.

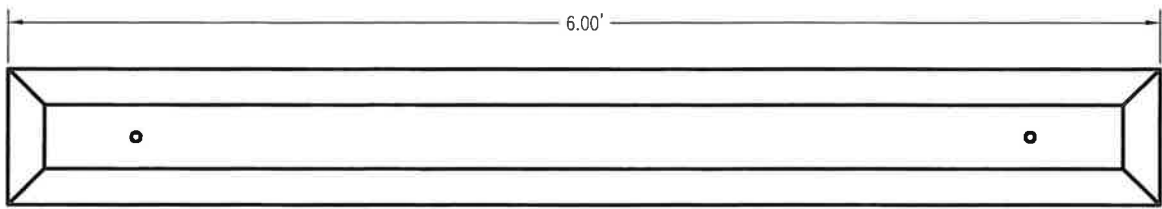
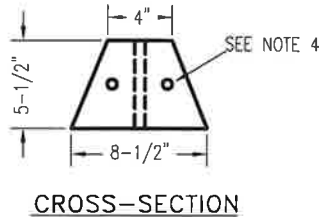
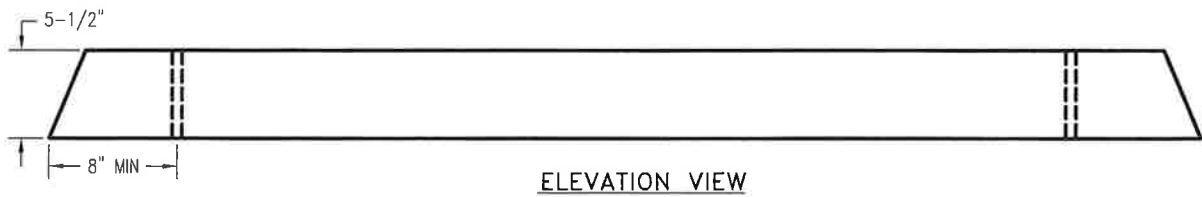
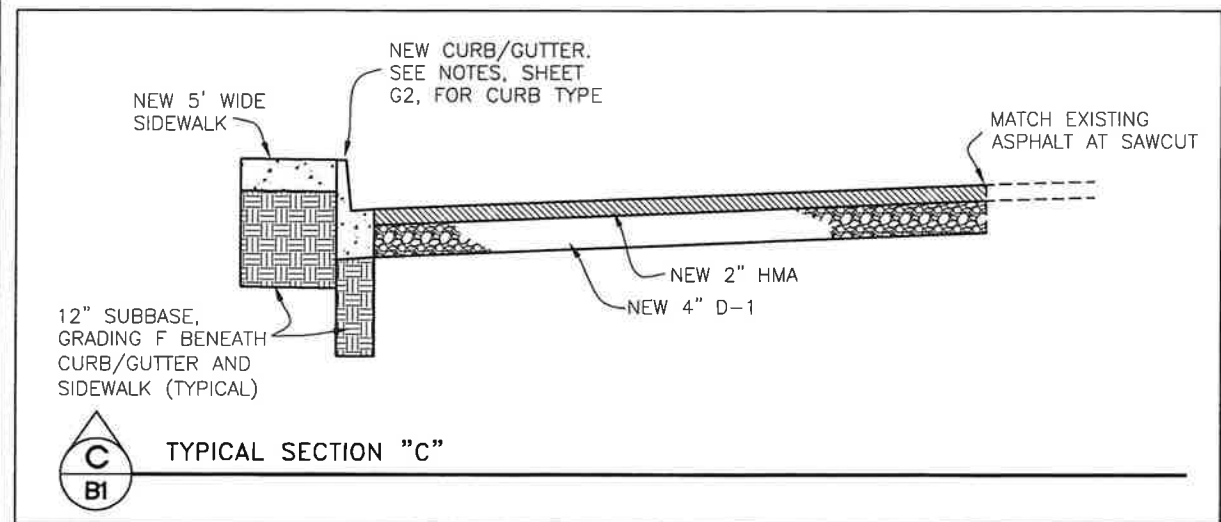
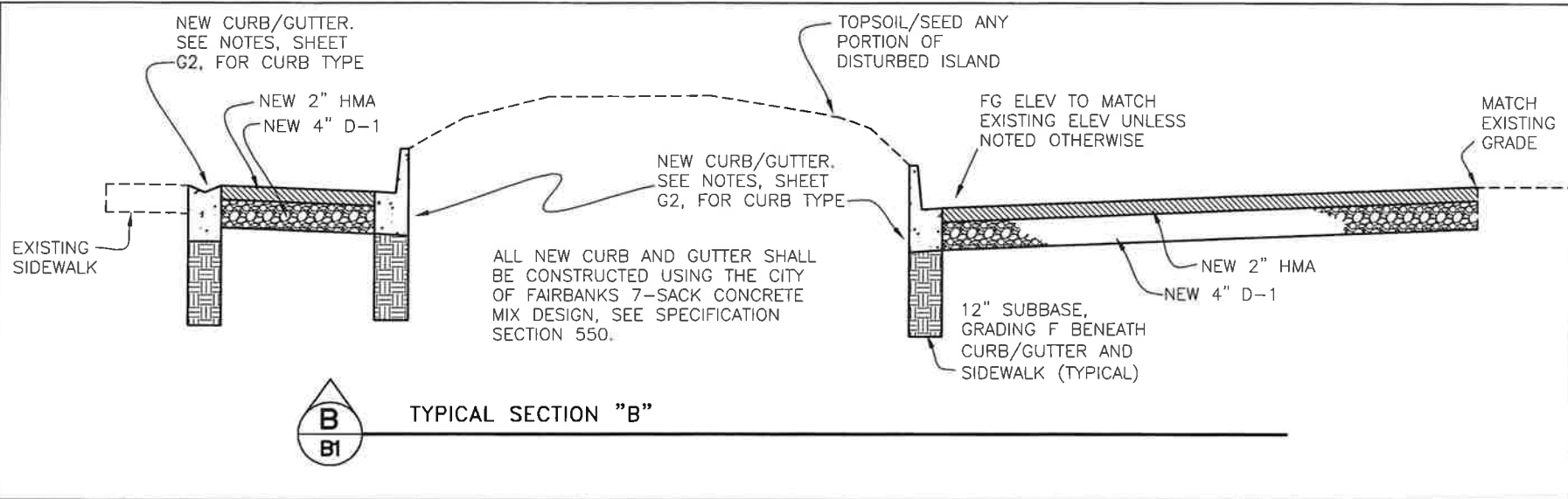
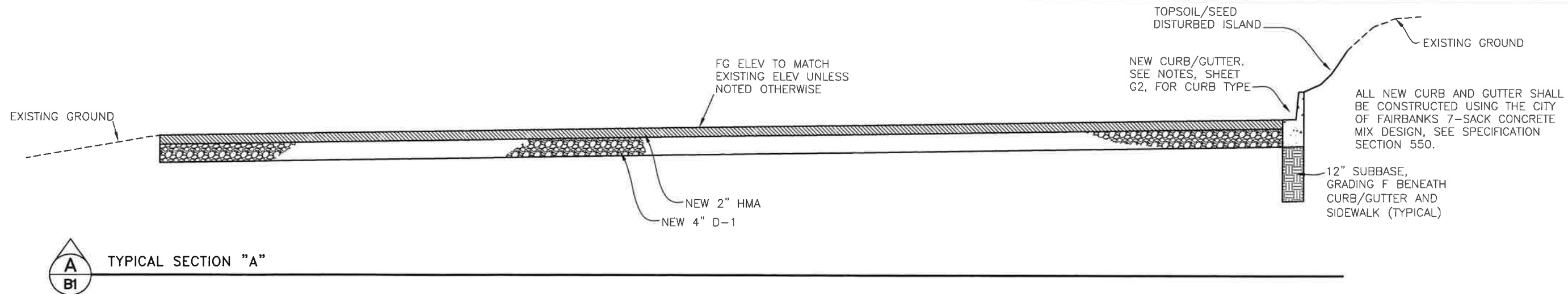
P:\Senior Center & Moore Street Senior Apartments\ASPHALT PARKING LOT\Civil3D Dwg Files\13 - Production\Quantities-Notes-ABBREVIATIONS Mon, Jun/22/26 02:18pm

ABBREVIATIONS
AND GENERAL NOTES



06/26/26

DATE		REVISION		BY		SCALE:	DESIGNED: COF STAFF	APPROVED	 MOORE ST. SENIOR APARTMENTS PARKING LOT IMPROVEMENTS	CITY OF FAIRBANKS, ALASKA Engineering Department Project ITB-26-15	A3 OF SHEETS
							DRAWN: COF STAFF	CITY ENGINEER			
							CHECKED: COF STAFF	DATE			



PRECAST CONCRETE PARKING BUMPER DETAIL
SCALE: 1" = 0.5'

NOTES

- 1) LENGTH OF THE PRECAST CONCRETE PARKING BUMPER SHALL BE 6 FT FOR EACH OF THE 9 FT WIDE PARKING SPACES.
- 2) STAKE PRECAST CONCRETE PARKING BUMPERS USING 5/8" DIA ANCHOR PINS VERTICALLY THROUGH THE BODY OF THE CURB SECTIONS. TWO PINS ARE REQUIRED PER CURB SECTION. ANCHOR PINS SHALL BE EMBEDDED AT LEAST 18" BELOW THE PARKING AREA PAVED SURFACE. ANCHOR PINS SHALL BE BETWEEN ZERO AND ONE INCH INSET TO THE TOP OF THE PRECAST CONCRETE PARKING BUMPER SECTIONS AND SHALL NOT PROJECT ABOVE THE CONCRETE SURFACE.
- 3) CONSTRUCT AND INSTALL PRECAST PARKING BUMPER AS SHOWN OR APPROVED EQUAL. IF OTHER IS USED, PROVIDE DETAILS TO ENGINEER FOR APPROVAL.
- 4) INSTALL TWO (2) #4 REBAR REINFORCEMENTS THE ENTIRE LENGTH OF THE PARKING BUMPER. TERMINAE REBAR 3" FROM FACE OF CONCRETE AT EACH END OF PARKING BUMPER.

P:\Senior Center & Moore Street Apartments\ASPHALT PARKING LOT\Civil3D Draw Files\1.3 Production\Typical Sections-TYPICAL SECTIONS Mon, Jun 22/26 02:19pm

DATE	REVISION	BY

SCALE:
1"=5' HORIZ., 1"=2' VERT. (FULL SIZE)
1"=10' HORIZ., 1"=2' VERT. (HALF SIZE)

DESIGNED: WKR/KLL
DRAWN: WKR
CHECKED: KLL
DATE:

APPROVED

CITY ENGINEER
DATE



MOORE ST. SENIOR APARTMENTS
PARKING LOT IMPROVEMENTS

CITY OF FAIRBANKS, ALASKA
Engineering Department
Project ITB-26-15



TYPICAL
SECTIONS

B1
OF 1
SHEETS

ESTIMATE OF QUANTITIES – BASE BID

ITEM NO.	PAY ITEM	PAY UNIT	QUANTITY
202.0001.0000	REMOVAL OF STRUCTURES AND OBSTRUCTIONS	LUMP SUM	ALL REQUIRED
301.0001.00D1	AGGREGATE BASE COURSE, GRADING D-1	TON	907
303.2003.0000	DITCH RECONDITIONING	LINEAR FOOT	330
304.0001.000F	SUBBASE, GRADING F	TON	126
401.0001.002B	HMA, TYPE II; CLASS B	TON	470
401.0004.5228	ASPHALT BINDER, GRADE 52-28	TON	28
603.2025.0000	TRENCH DRAIN	LINEAR FOOT	6
608.0001.0004	CONCRETE SIDEWALK, 4 INCH THICK	SQUARE YARD	82
608.0006.0000	CURB RAMP	EACH	1
609.0002.0001	CURB AND GUTTER, TYPE 1	LINEAR FOOT	484
609.2003.0000	CONCRETE PARKING BUMPER	EACH	6
615.0002.0000	REMOVE AND RELOCATE SIGN	EACH	2
618.0004.0000	SEEDING	SY	666
620.0001.0000	TOP SOIL	SY	666
641.0001.0000	MOBILIZATION AND DEMOBILIZATION	LUMP SUM	ALL REQUIRED
641.0001.0000	EROSION, SEDIMENT AND POLLUTION CONTROL	LUMP SUM	ALL REQUIRED
642.0001.0000	CONSTRUCTION SURVEYING	LUMP SUM	ALL REQUIRED
643.0002.0000	TRAFFIC MAINTENANCE	LUMP SUM	ALL REQUIRED
670.0001.0000	PAINTED TRAFFIC MARKINGS	LUMP SUM	ALL REQUIRED

ESTIMATING FACTORS


ITEM NO.	PAY ITEM	FACTOR
301.0001.00D1	AGGREGATE BASE COURSE GRADING D-1	145 LB / CF
401.0001.002B	HMA, TYPE II; CLASS B	150 LB / CF
401.0004.0000	ASPHALT BINDER, GRADE PG 52-28	5.5% WEIGHT OF 401.0001.002B

ESTIMATE OF QUANTITIES

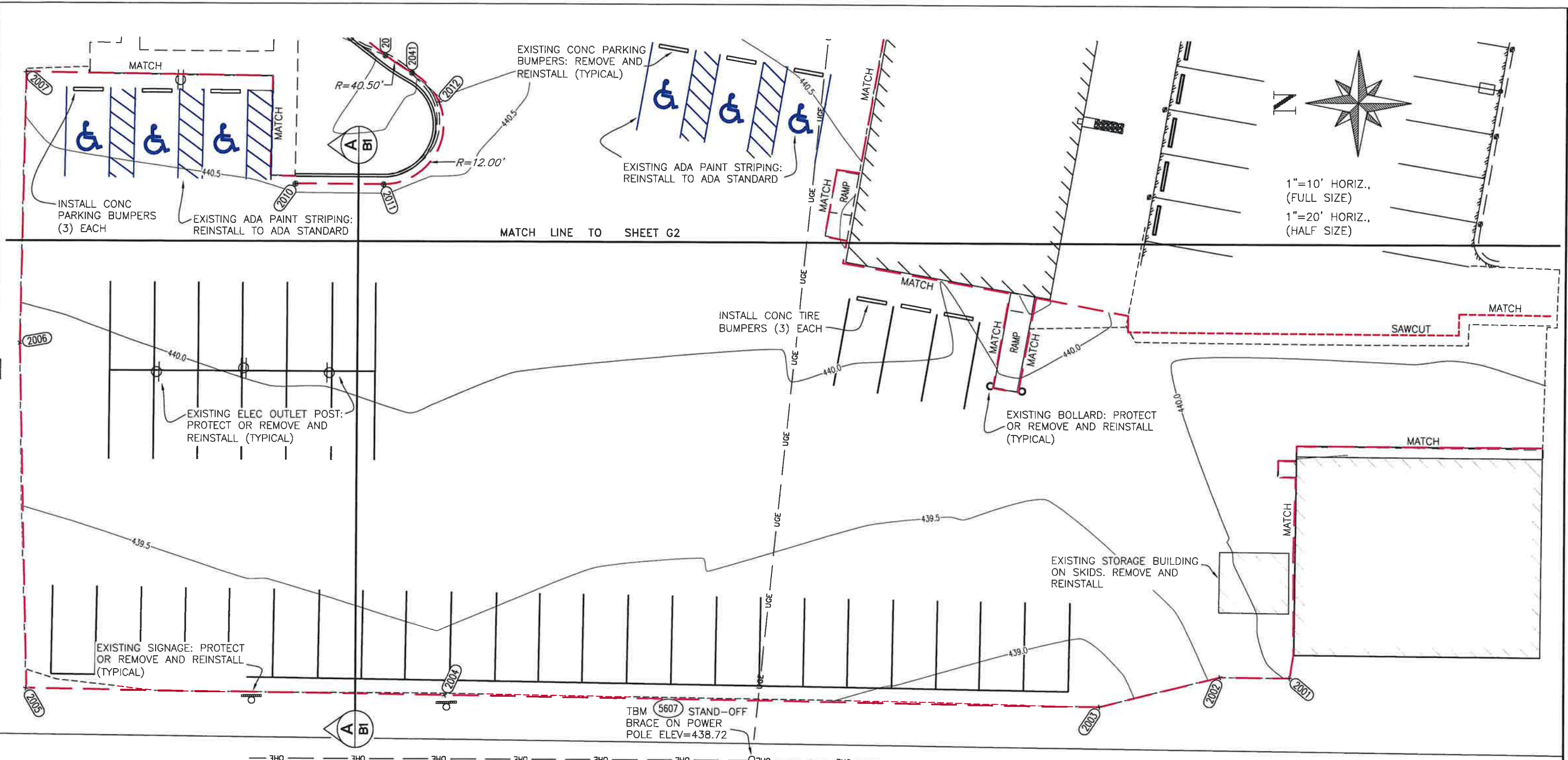


06/26/26

P:\Senior Center & Moore Street Senior Apartments\ASPHALT PARKING LOT\Civil3D Dwg Files\L3 Production\Quantities-Notes-QUANTITIES.Tue, Jun/23/26 10:23am

DATE	REVISION	BY	SCALE:	DESIGNED: COF STAFF	APPROVED	 MOORE ST. SENIOR APARTMENTS PARKING LOT IMPROVEMENTS	CITY OF FAIRBANKS, ALASKA Engineering Department Project ITB-26-15	C1 OF SHEETS
				DRAWN: COF STAFF	_____			
				CHECKED: COF STAFF	CITY ENGINEER			
				DATE:	DATE			

P:\Senior Center & Moore Street Senior Apartments\ASPHALT PARKING LOT\Civil3D Dwg Files\L3 Production\GRADING_ParkLot-CRUNDING01 Mon, Jun/22/26 02:20pm



Point #	Elevation	Northing	Easting	Description
5	438.10	195227.98	669742.80	SPIKE
6	438.61	195677.23	669710.10	TBM CURB
7	439.29	195345.99	669643.70	MAG NAIL
2001	440.04	195360.73	669366.03	FG
2002	439.58	195374.91	669366.18	FG
2003	438.75	195399.61	669360.07	FG
2004	439.35	195532.89	669362.00	FG
2005	439.06	195617.89	669363.24	FG
2006	439.89	195619.68	669433.27	FG
2007	440.62	195618.85	669487.98	FG

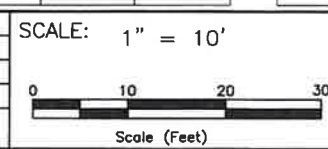
Point #	Elevation	Northing	Easting	Description
2008	440.23	195500.08	669529.99	FG
2009	440.13	195496.98	669547.98	FG
2010	440.52	195563.94	669465.44	EG MATCH
2011	440.52	195545.90	669465.36	FG PC
2012	440.53	195534.65	669482.05	FG POC
2013	440.38	195561.57	669507.25	FG
2014	440.26	195561.30	669525.32	FG
2015	440.00	195561.04	669543.40	FG PC
2016	439.21	195525.87	669580.31	FG PC
2017	437.90	195500.24	669686.04	FG PC

Point #	Elevation	Northing	Easting	Description
2018	438.09	195522.47	669708.70	FG PT
2019	438.01	195532.75	669708.91	EG MATCH
2020	438.24	195466.82	669687.34	MATCH
2021	438.54	195467.02	669655.47	MATCH
2022	438.43	195470.99	669654.94	MATCH
2023	439.47	195485.76	669600.70	MATCH
2024	440.26	195494.74	669547.59	MATCH
2025	439.82	195524.49	669510.78	FG PT
2026	439.34	195515.64	669546.52	FG PC
2027	439.11	195521.98	669561.65	FG POC

Point #	Elevation	Northing	Easting	Description
2028	439.46	195538.30	669559.94	FG PT
2029	439.64	195545.12	669553.65	FG PC
2030	439.83	195550.59	669546.02	FG POC
2031	440.02	195552.63	669536.77	FG PT
2032	440.18	195552.75	669528.72	FG PC
2033	440.20	195551.60	669519.81	FG POC
2034	440.14	195547.98	669511.58	FG PT
2035	440.10	195545.41	669507.46	FG PC
2036	440.00	195533.85	669502.19	FG POC
2041	0.00	195540.20	669487.95	GP PRC

Point #	Elevation	Northing	Easting	Description
2042	0.00	195545.69	669491.47	GP PT
2043	0.00	195554.31	669498.04	GP PC
2044	0.00	195554.71	669556.84	GP PT
2045	0.00	195501.48	669624.73	GP PCC
2046	0.00	195498.79	669662.70	GP PCC
2047	0.00	195499.26	669675.93	GP PT

DATE	REVISION	BY



DESIGNED: WKR/KLL
 DRAWN: WKR
 CHECKED: KLL
 DATE: _____

APPROVED _____
 CITY ENGINEER
 DATE _____



**MOORE ST. SENIOR APARTMENTS
 PARKING LOT IMPROVEMENTS**

GRADING

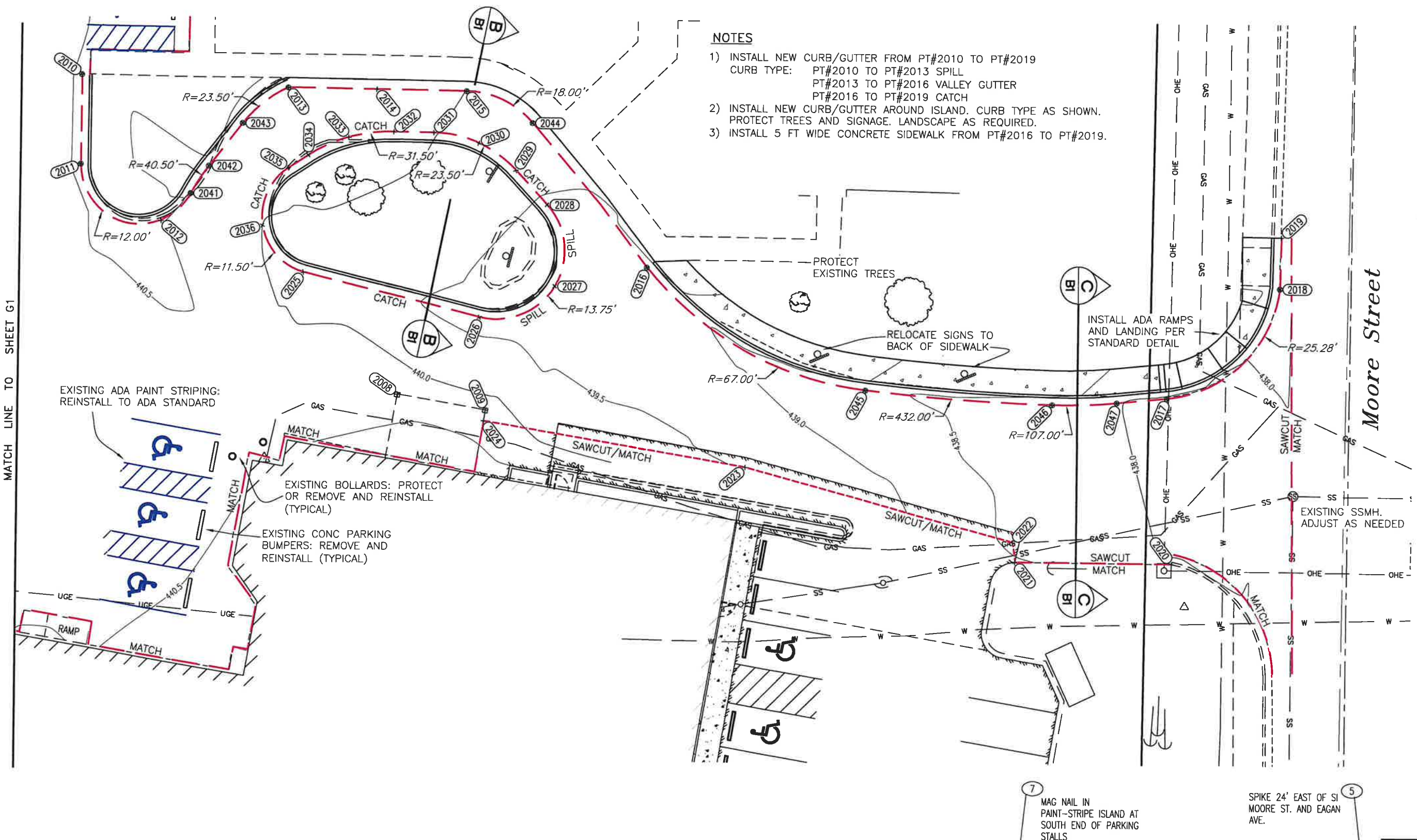
06/26/26

CITY OF FAIRBANKS, ALASKA
 Engineering Department

Project ITB-26-15

G1
OF 4 SHEETS

P:\Senior Center & Moore Street Senior Apartments\SPHALT PARKING LOT\Civil3D Dwg Files\13 Production\GRADING_Perklat-GRADING02 Mon, Jun/22/26 02:21pm



- NOTES**
- INSTALL NEW CURB/GUTTER FROM PT#2010 TO PT#2019
 CURB TYPE: PT#2010 TO PT#2013 SPILL
 PT#2013 TO PT#2016 VALLEY GUTTER
 PT#2016 TO PT#2019 CATCH
 - INSTALL NEW CURB/GUTTER AROUND ISLAND. CURB TYPE AS SHOWN.
 PROTECT TREES AND SIGNAGE. LANDSCAPE AS REQUIRED.
 - INSTALL 5 FT WIDE CONCRETE SIDEWALK FROM PT#2016 TO PT#2019.

1"=10' HORIZ.,
 (FULL SIZE)
 1"=20' HORIZ.,
 (HALF SIZE)



Moore Street

EXISTING ADA PAINT STRIPING:
REINSTALL TO ADA STANDARD

EXISTING BOLLARDS: PROTECT
OR REMOVE AND REINSTALL
(TYPICAL)

EXISTING CONC PARKING
BUMPERS: REMOVE AND
REINSTALL (TYPICAL)

PROTECT
EXISTING TREES

RELOCATE SIGNS TO
BACK OF SIDEWALK

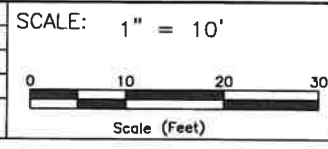
INSTALL ADA RAMP
AND LANDING PER
STANDARD DETAIL

EXISTING SSMH.
ADJUST AS NEEDED

7
MAG NAIL IN
PAINT-STRIPES ISLAND AT
SOUTH END OF PARKING
STALLS

5
SPIKE 24' EAST OF SI
MOORE ST. AND EAGAN
AVE.

DATE	REVISION	BY



DESIGNED: WKR/KLL
 DRAWN: WKR
 CHECKED: KLL
 DATE:

APPROVED

 CITY ENGINEER
 DATE



**MOORE ST. SENIOR APARTMENTS
PARKING LOT IMPROVEMENTS**

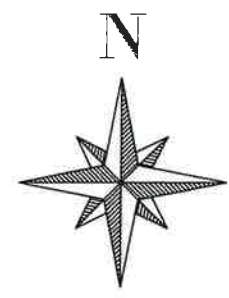
GRADING
 06/26/26

CITY OF FAIRBANKS, ALASKA
 Engineering Department
 Project ITB-26-15



G2
 OF 4
 SHEETS

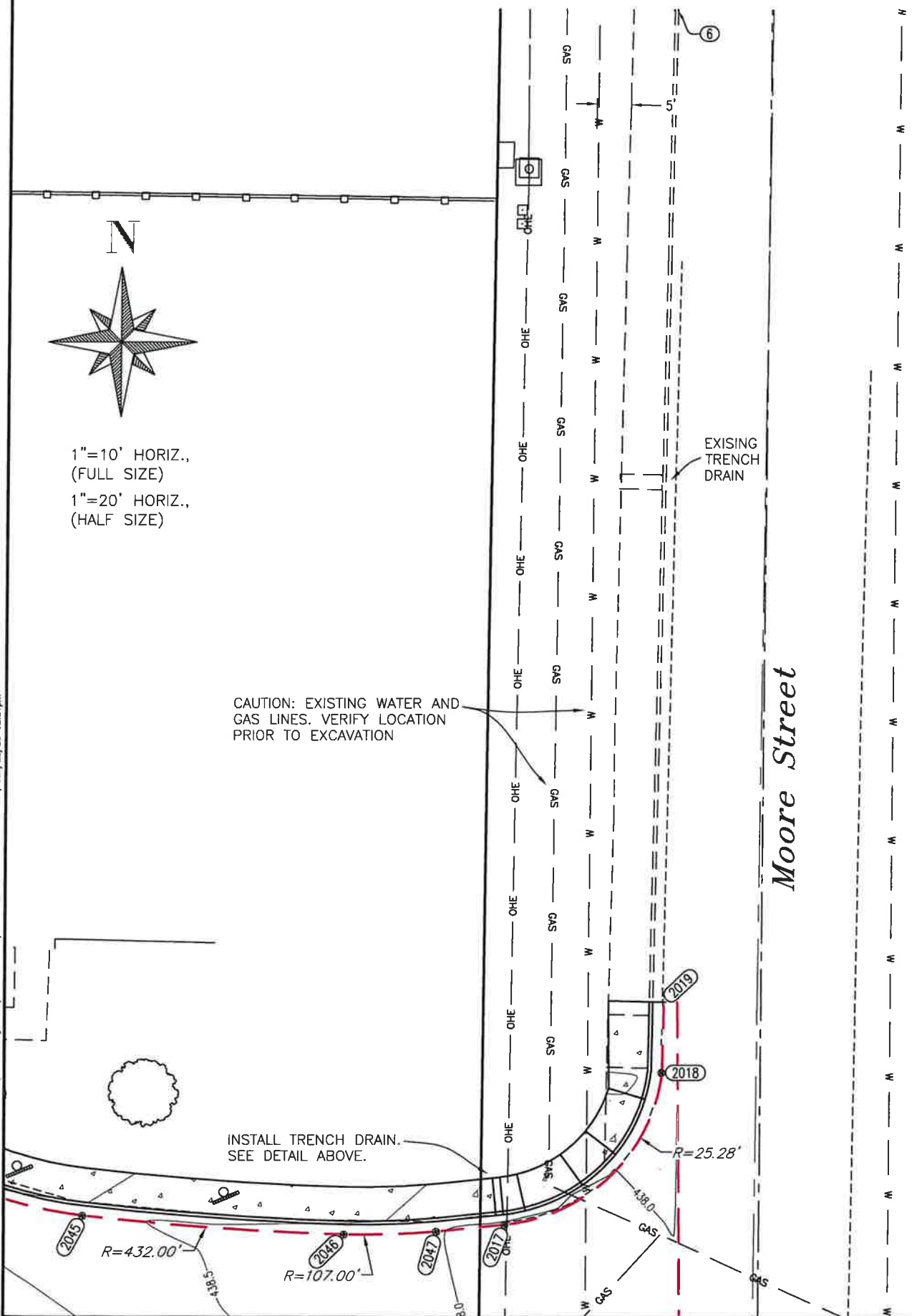
P:\Senior Center & Moore Street Senior Apartments\ASPHALT PARKING LOT\Civil3D Dwg Files\3 Production\GRADING_ParkLot-GRADING03 Mon, Jun/22/26 02:21:11pm



1"=10' HORIZ.,
(FULL SIZE)
1"=20' HORIZ.,
(HALF SIZE)

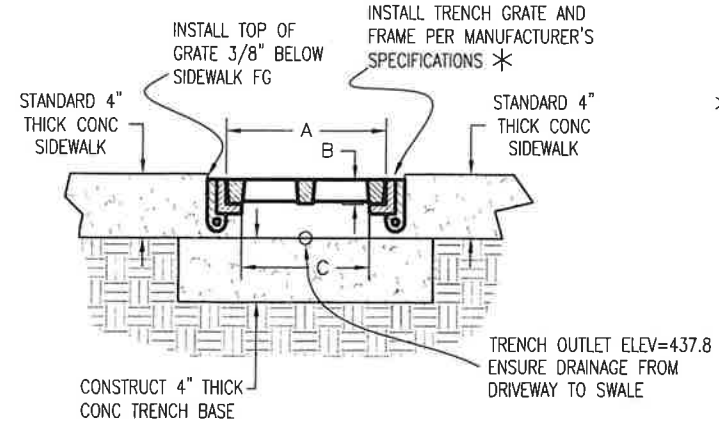
CAUTION: EXISTING WATER AND
GAS LINES. VERIFY LOCATION
PRIOR TO EXCAVATION

INSTALL TRENCH DRAIN.
SEE DETAIL ABOVE.



McCullam
Avenue

Moore Street

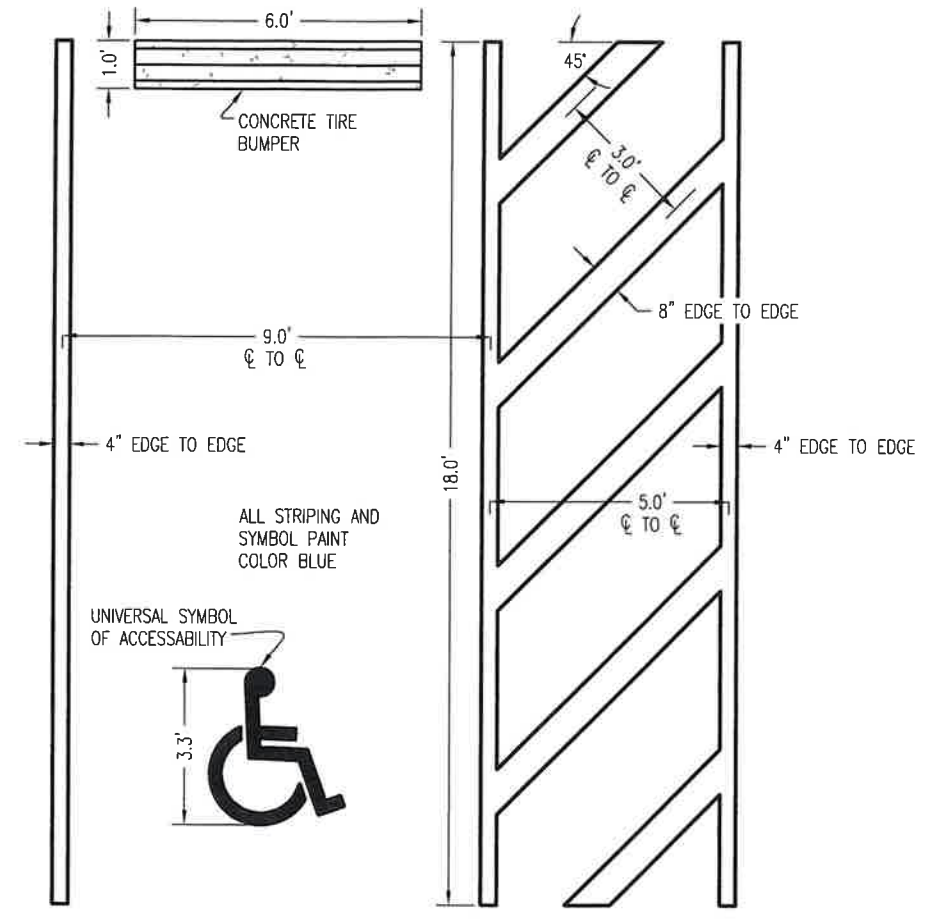


TRENCH DRAIN THROUGH SIDEWALK DETAIL
CROSS-SECTION

SCALE: 1" = 0.5'

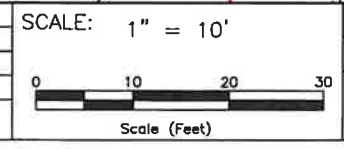
* ILLUSTRATION SHOWS EAST JORDAN
IRON WORK GRATE AND FRAME MODEL
"V-7382-20"

- 1) WIDTH OF TRENCH OPENING, DIMENSION "A": 10"
- 2) SEAT DEPTH, DIMENSION "B": 1-1/2"
- 3) CLEAR OPENING OF TRENCH, DIMENSION "C": 8"
- 4) LENGTH OF TRENCH INSTALLATION: 5.5'
- 5) SIDE FRAMES REQUIRED: YES
- 6) GRATES/COVERS BOLTED TO THE FRAMES: YES
- 7) LOAD REQUIREMENT: AASHTO H-20



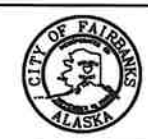
ADA PARKING SPACE PAINT STRIPING
DETAIL

SCALE: 1" = 2'



DESIGNED: WKR/KLL
DRAWN: WKR
CHECKED: KLL
DATE:

APPROVED
CITY ENGINEER
DATE



MOORE ST. SENIOR APARTMENTS
PARKING LOT IMPROVEMENTS

CITY OF FAIRBANKS, ALASKA
Engineering Department
Project ITB-26-15



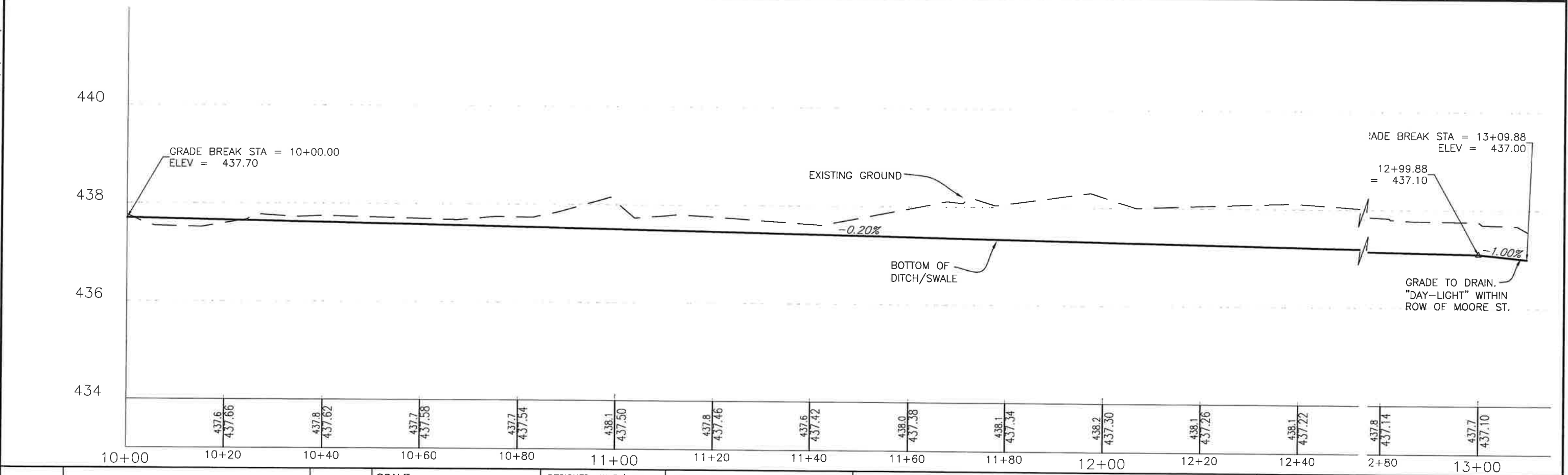
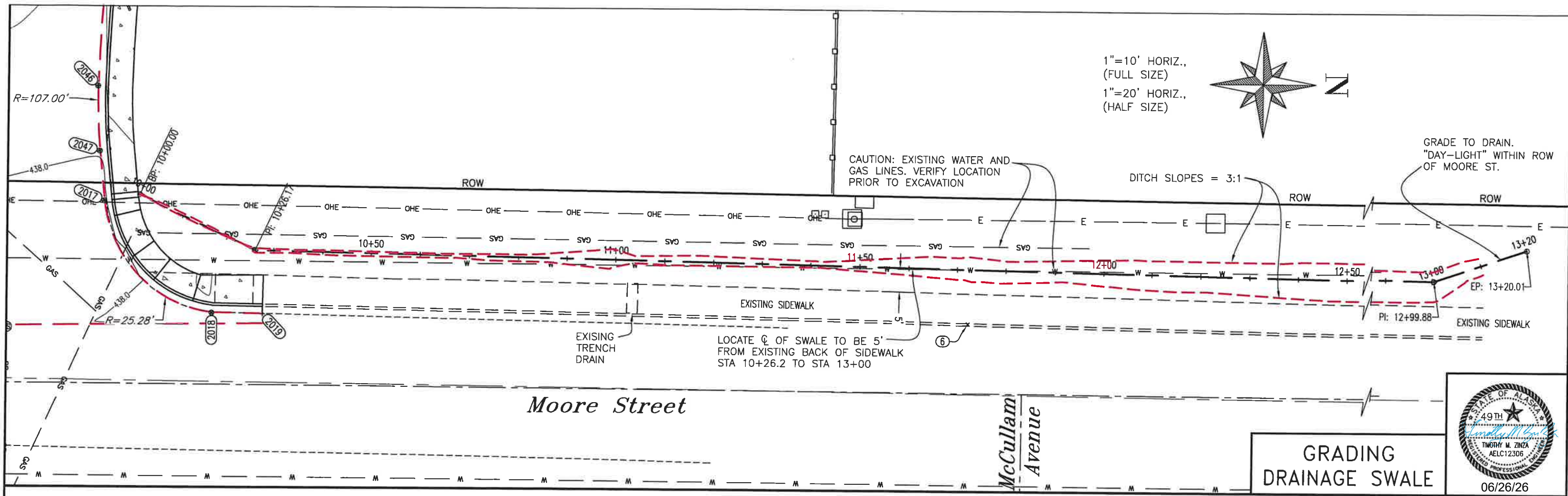
G3
OF 4 SHEETS

GRADING

06/26/26

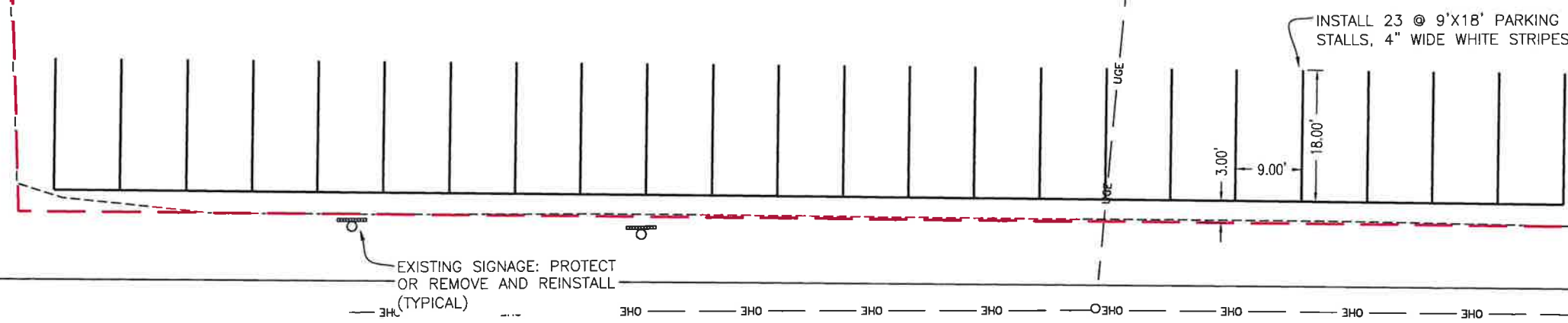
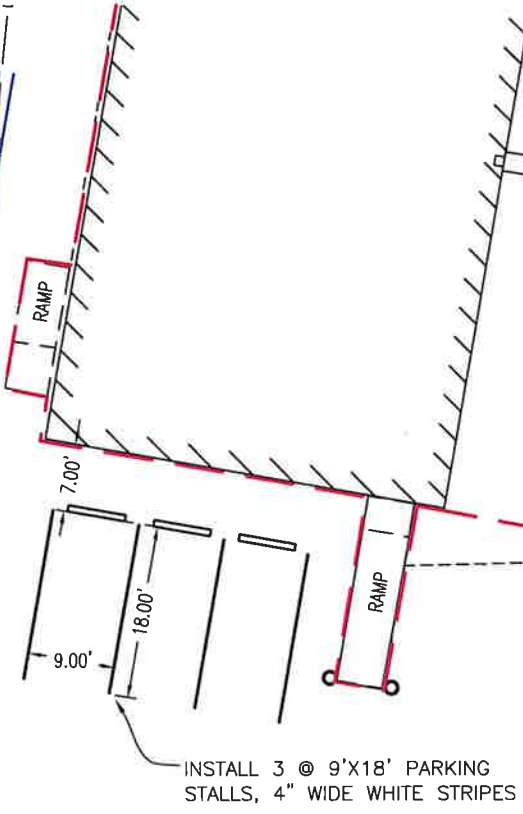
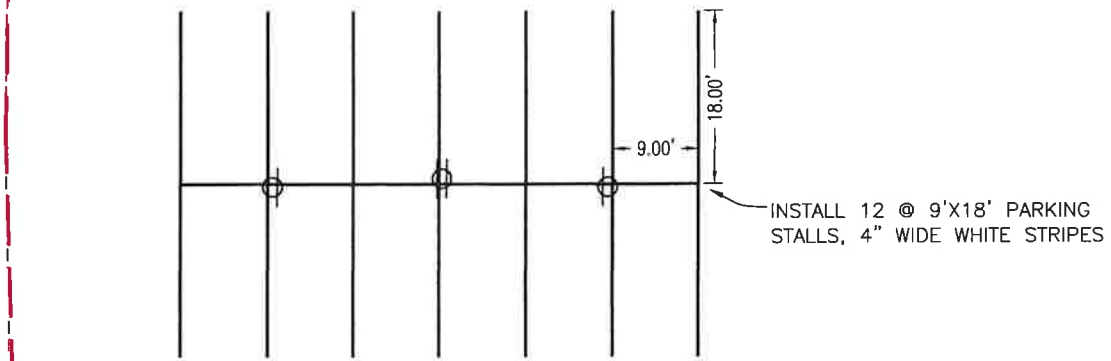
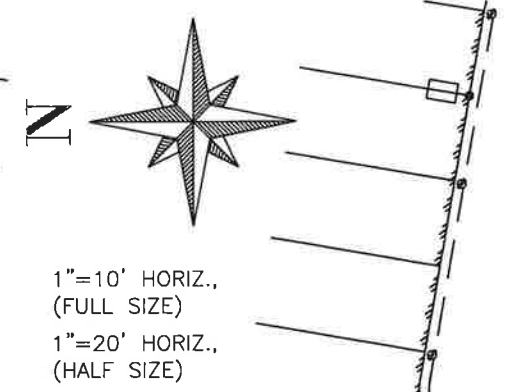
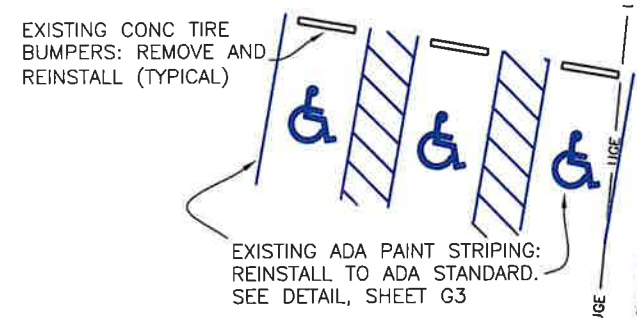
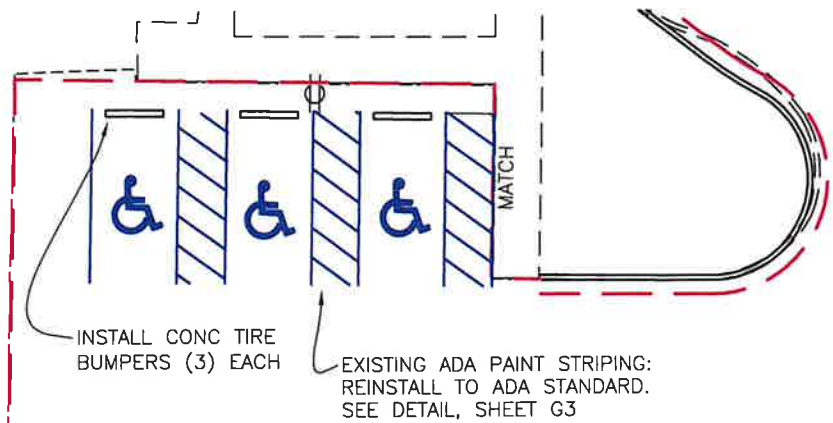
DATE	REVISION	BY

P:\Senior Center & Moore Street Senior Apartments\ASPHALT PARKING LOT\Civil3D Dwg Files\13 Production\GRADING_PerkLot-GRADING04 Mon, Jun/22/26 02:22pm



DATE	REVISION	BY	SCALE: 1" = 10'	DESIGNED: WKR/KLL	APPROVED	MOORE ST. SENIOR APARTMENTS PARKING LOT IMPROVEMENTS	CITY OF FAIRBANKS, ALASKA Engineering Department Project ITB-26-15	G4 OF 4 SHEETS
			Scale (Feet)	DRAWN: WKR	CITY ENGINEER			
				CHECKED: KLL	DATE			

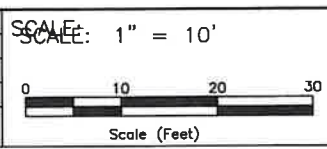
P:\Senior Center & Moore Street Senior Apartments\ASPHALT PARKING LOT\Civil3D Dwg Files\13 Production\STRIPING LAYOUT-STRIPING01.dwg, Jun/22/26 02:23pm



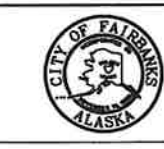
STRIPING

CITY OF FAIRBANKS, ALASKA
Engineering Department
Project ITB-26-15

H1
OF 1 SHEETS

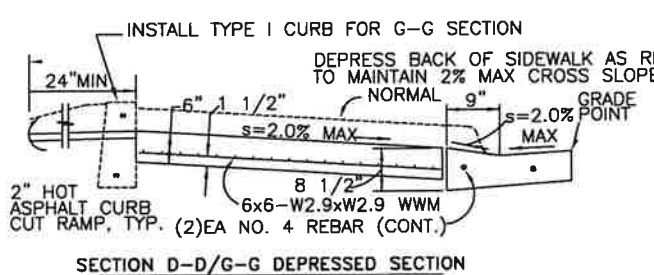
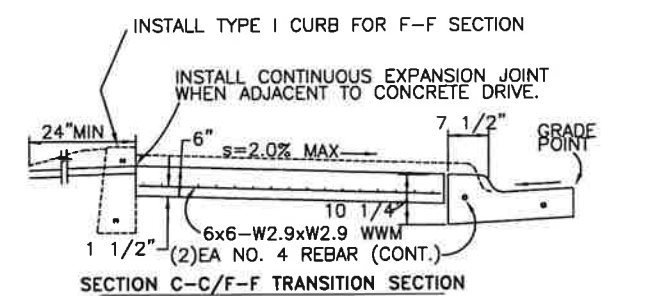
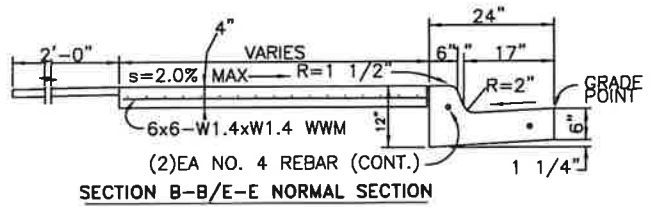
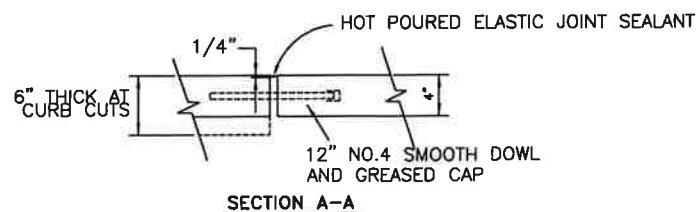
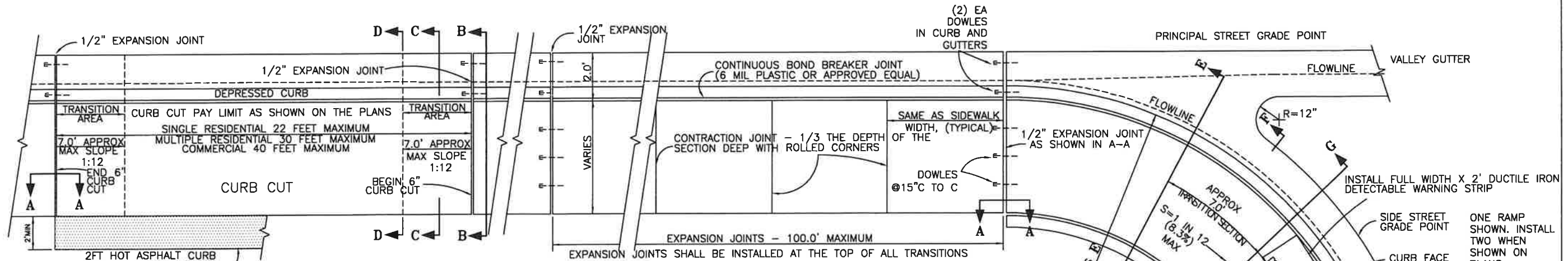


DESIGNED: WKR/KLL	APPROVED
DRAWN: WKR	_____
CHECKED: KLL	CITY ENGINEER
DATE:	DATE



**MOORE ST. SENIOR APARTMENTS
PARKING LOT IMPROVEMENTS**

DATE	REVISION	BY

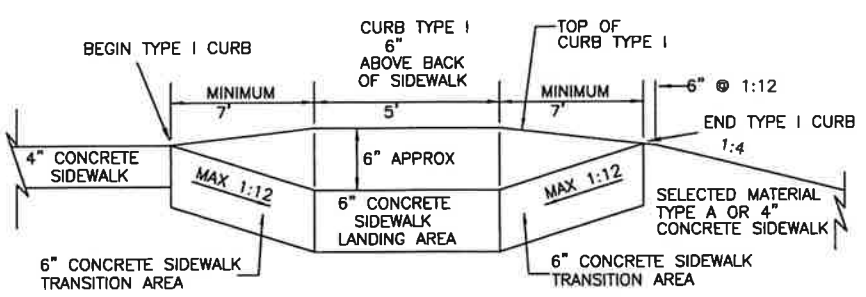


TYPICAL SIDEWALK PLAN

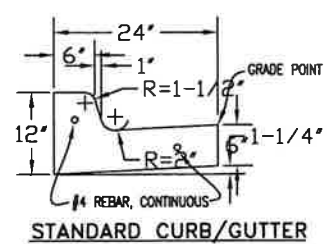
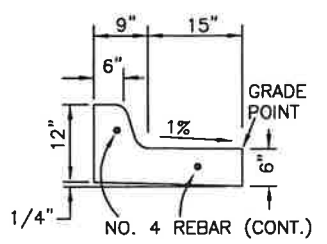
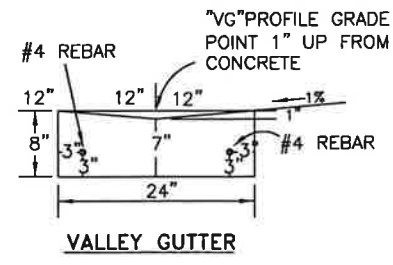
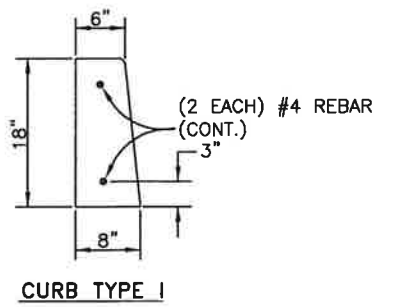
(VARIES WITH NO VALLEY GUTTER OR WITH SIDEWALK SEPARATED FROM CURB AS SHOWN ON PLANS)

GENERAL NOTES:

1. CURB CUT SECTIONS SHALL BE 6" THICK TO INCLUDE TRANSITIONS.
2. CURB RAMP SECTIONS SHALL BE 6" THICK TO INCLUDE TRANSITIONS.
3. INSTALL CONTINUOUS FULL DEPTH 1/2" CONSTRUCTION JOINT AT ALL LOCATIONS WHERE SIDEWALK AND CURB (ANY TYPE) MEET.
4. PROTECT CONCRETE DURING CURE.
5. SIDEWALK - BROOM FINISH (MEDIUM)
6. SEAL ALL EXPANSION JOINTS WITH HOT POURED ELASTIC TYPE JOINT SEAL CONFORMING TO ASTM D6690
7. FOR SIDEWALKS LARGER OR DIFFERENTLY CONFIGURED THAN SHOWN PLACE EXPANSION AND CONTRACTION JOINTS AS ENGINEER DIRECTS.
8. INSTALL 1/2" CONSTRUCTION JOINT MATERIAL BETWEEN NEW CONCRETE AND ADJACENT BUILDINGS, POLES AND HYDRANTS.
9. ALL CURB RAMPS SHALL HAVE A DETECTABLE WARNING STRIP PER ADA REQUIREMENTS.
10. WWM STEEL REINFORCEMENT FOR PEDESTRIAN RAMPS AND CURB CUTS SHALL BE 6"x6"- W2.9 X W2.9 WWM. FOR NORMAL SIDEWALK REINFORCEMENT SHALL BE 6"x6"- W1.4 X W1.4 ALL STEEL SHALL BE SET ON SPACERS AND PULLED UP AS REQUIRED TO POSITION STEEL 1 1/2" UP FROM BOTTOM OF SIDEWALK.
11. EXPANSION AND CONTRACTION JOINTS IN THE SIDEWALK SHALL LINE UP WITH EXPANSION AND CONTRACTION JOINTS IN THE CURB.



WWM REINFORCEMENT NOT SHOWN FOR CLARITY SEE SECTION E-E, F-F, AND G-G THIS SHEET



06/26/26

3/31/21	UPDATE DEP. SECTION DETAIL/DEL. RED DYE NOTE	RHP/KLL
9/26/17	UPDATE CURB CUT & ADA DETAILS	RHP
7/26/17	DELETE AASHTO AND REPLACE WITH ASTM D 6690	RHP
2/1/10	NEW CD1	RHP,GSC
DATE	REVISION	BY

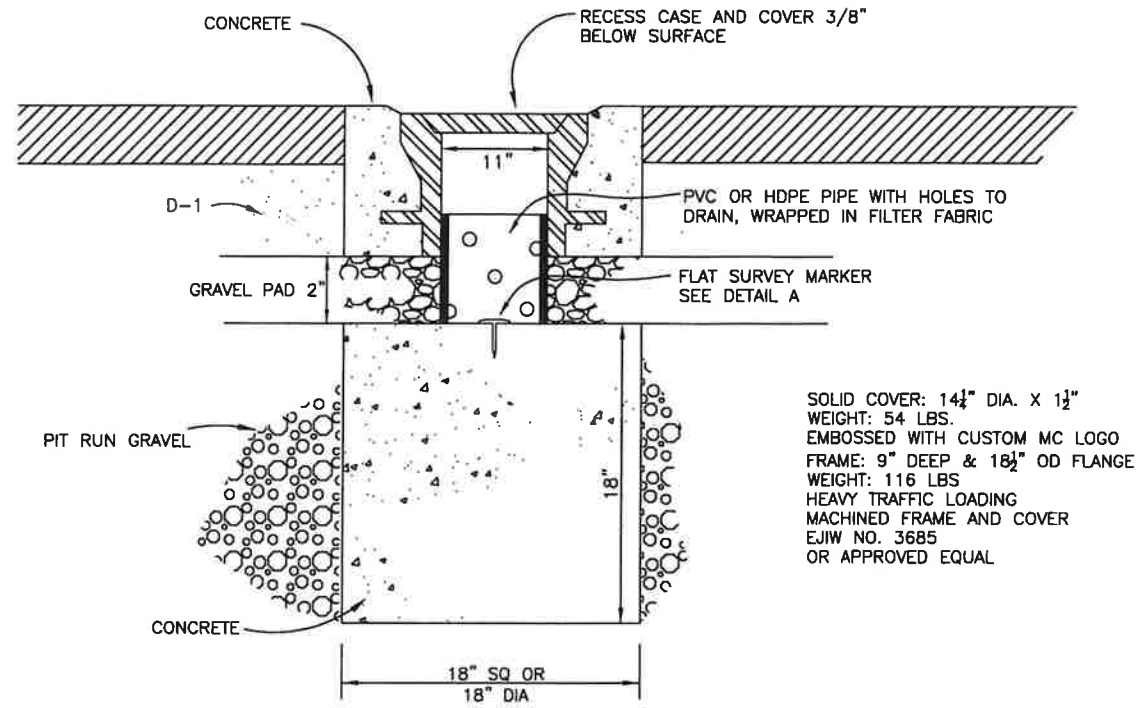
NOT TO SCALE

DESIGNED:	
DRAWN:	STAFF
CHECKED:	RHP,GSC
DATE:	3/23/07

CITY OF FAIRBANKS, ALASKA
ENGINEERING DIVISION

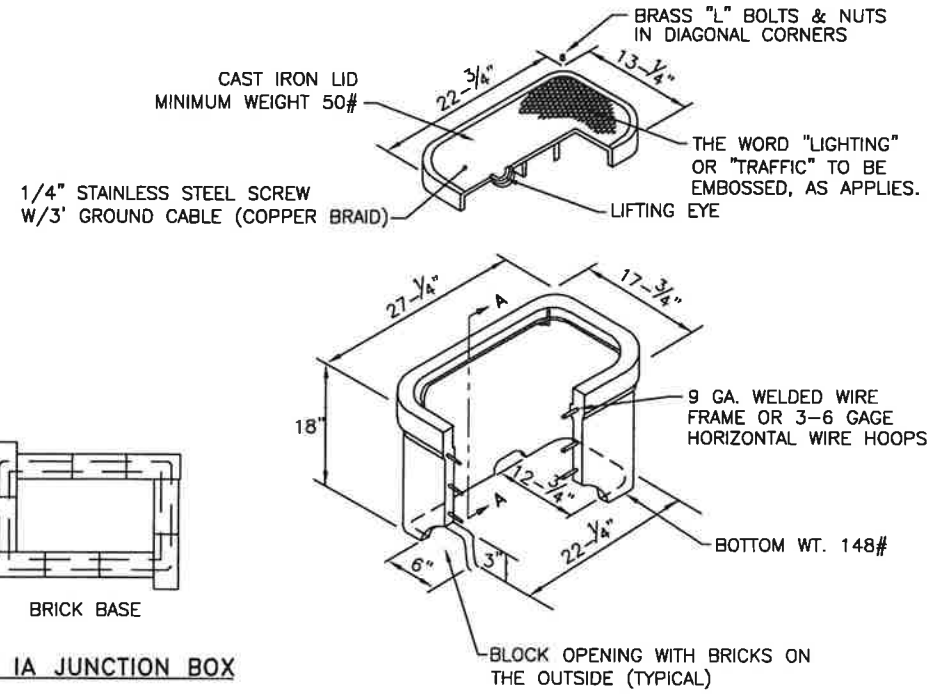
STANDARD CONCRETE DETAILS

CD1



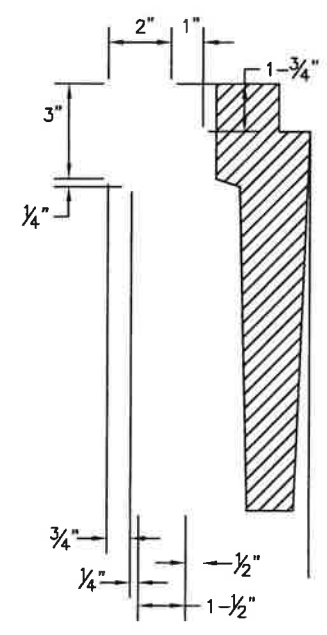
SOLID COVER: 14 1/4" DIA. X 1 1/2" WEIGHT: 54 LBS. EMBOSSED WITH CUSTOM MC LOGO
 FRAME: 9" DEEP & 18 1/2" OD FLANGE WEIGHT: 116 LBS
 HEAVY TRAFFIC LOADING MACHINED FRAME AND COVER EJIW NO. 3685 OR APPROVED EQUAL

MONUMENT BASE AND CASE DETAIL

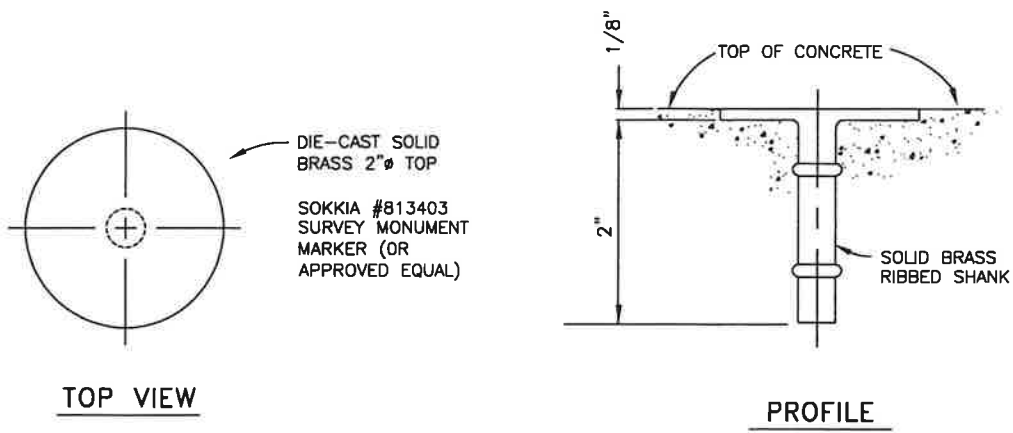


TYPE IA JUNCTION BOX

TYPE IA JUNCTION BOX DETAIL



SECTION A-A



FLAT SURVEY MARKER DETAIL A



06/26/26

4/19/22	UPDATED MON. CASE, DEL. STEEL, ADDED PVC/HDPE	RHP,KLL
11/19/14	JUNCTION BOX ADDED	RHP,STC
2/1/10	NEW CD2	RHP,GSC
10/27/08		RHP
DATE	REVISION	BY

NOT TO SCALE

DESIGNED:	
DRAWN:	STAFF
CHECKED:	RHP,GSC
DATE:	3/23/07

CITY OF FAIRBANKS, ALASKA
 ENGINEERING DIVISION

STANDARD CONCRETE DETAILS
 MONUMENT BASE, CASE AND MARKER

CD2