



800 Cushman Street
Fairbanks, AK 99701

Telephone (907)459-6747
Fax (907)452-5913

GOLDEN HEART PLAZA RESTROOM FACILITY ITB-25-04
ADDENDUM NO. 1

March 24, 2025

Invitation to Bid No.: ITB-25-04
Proposal Submittal Date and Time: 2:00 P.M., April 1, 2025

**The following changes, clarifications, and/or additions are hereby made to the
GOLDEN HEART PLAZA RESTROOM FACILITY, PROJECT NO. ITB-25-04**

Clarification of Pre-bid Meeting Questions:

- 1. Is PVC or plastic-coated Rigid Metal Conduit (RMC) required for buried electrical?**
Not required.
- 2. Plumbing - P-trap Primers /Floor & Handwash Drains / Vents / Heat Trace**
 - a) P-Trap Primers – Required for Floor Drain but not Handwash Drain.**
 - b) Floor Drain – Must be vented.**
 - c) Handwash Drain - Must be vented.**
 - d) Heat Trace – Shall be provided with both conduit and conductor.**

Change / Clarification to ITB-25-04 Bid Documents

- 3. Page 12, Bid Schedule: Change /Clarification – Delete Item No 203.0019.0**
UNCLASSIFIED EXCAVATION from Bid Schedule (Work completed in October 2024).
- 4. Page 39, SECTION 622 REST AREA FACILITIES, SECTION 622-501 BASIS OF PAYMENT**
states: Payment will be for all work, materials, labor, appurtenances, equipment, supervision, coordination, and incidentals, that are necessary for a complete and functioning Portland Loo Facility, PCC foundation repair, utility connections, as shown in the plans and described in the specifications is subsidiary. Any temporary structures, scaffoldings, special equipment, shoring, or bracings required by the Contractor will be subsidiary.
Change /Clarification – Delete “utility connections.” (Utility connections shall be paid under Water, Sewer and Electrical Bid Items.)

5. **Page 40, SECTION 626 SANITARY SEWER SYSTEM, SECTION 626-501 BASIS OF PAYMENT, 2nd Paragraph states:** Payment will be for all work, materials, labor, appurtenances, equipment, supervision, coordination, and incidentals that are necessary for a complete and functioning road, curb and gutter, and sidewalk is subsidiary. Sawcut at 15 degrees shall be from curb grade point full width across road to curb grade point. **Change /Clarification – Delete** “Road structure as follows: 2” HMA, Type II Class B, 6” Aggregate Base Course, Grading D-1, and 18” Subbase, Grading F is subsidiary.” PCC curb and gutter, 6” sidewalk, and 12” Subbase, Grading F, is subsidiary.” **Change /Clarification – Add Statement –** Payment includes installation of trench floor drain plumbing with vent and P-Trap Primer and handwash drain basin with vent and plumbing. Connect Portland Loo facility to Sanitary Sewer Service Line.
6. **Page 41, SECTION 627 WATER SYSTEM, SECTION 627-501 BASIS OF PAYMENT states:** Payment will be for all work, materials, labor, appurtenances, equipment, supervision, coordination, permits, and incidentals that are necessary for a complete and functioning water service connection with heat trace is subsidiary. **Change /Clarification – Add Statement** Install the new water supply assembly to the existing system inside the Mechanical Room and connect to the Portland Loo.
7. **Page 44, SECTION 661 ELECTRICAL LOAD CENTERS, SECTION 661-501 BASIS OF PAYMENT states:** Payment will be for all work, materials, labor, appurtenances, equipment, supervision, coordination, permits, and incidentals that are necessary for a complete and functioning electrical circuit connections to the Portland Loo is subsidiary. **Change /Clarification – Add Statement** Install (3) conduit and conductor circuits from the existing panel in the Mechanical Room to the Portland Loo.
8. **APPENDIX A, ITEM 4, PORTLAND LOO PLANS, DRW. NO. P1.0, PLUMBING DETAIL, Floor Trench Drain Note states:** **Change /Clarification – Delete Statement** FLOOR TRENCH DRAIN SUPPLIED BY OWNER/CONTRACTOR, SIZE 2” OUTLET WITH P-TRAP. **Change /Clarification – Add Statement** FLOOR TRENCH DRAIN SUPPLIED BY CONTRACTOR, SIZE 2” OUTLET WITH P-TRAP, TRAP PRIMER AND VENT. (See Plans)
9. **APPENDIX A, ITEM 4, PORTLAND LOO PLANS, DRW. NO. P1.0, PLUMBING DETAIL, Bill of Material, Item 4 states:** **Change /Clarification – Delete Statement** 4” DUAL DIRECTION CLEAN-OUT **Change /Clarification – Add Statement** 4” GRADE CLEAN-OUT (See Plans)
10. **APPENDIX A, ITEM 4, PORTLAND LOO PLANS, DRW. NO. P1.0, PLUMBING DETAIL, Bill of Material, Item 9 states:** WASH BASIN FLOOR DRAIN **Change /Clarification – Delete Statement** P-TRAP FROM TRAP PRIMING LOCATED IN PLUMBING CHASE **Change /Clarification – Add Statement** VENTING REQUIRED. (See Plans)

11. **APPENDIX A, ITEM 6, NOTES AND PHOTOS, Item 4 states:** Remaining Sanitary Service Plumbing includes **Change /Clarification – Delete Statement** installation of a floor drain and handwash drain facilities with “Waterless Inline Floor Drain Trap Seals.” **Change /Clarification – Add Statement** contractor acquisition and installation of a trench floor drain with plumbing, vent and P-Trap Primer to Sanitary Sewer Service. Install supplied handwash drain basin, vent and plumbing to Sanitary Sewer Service. (See Plans)
12. **APPENDIX A, PORTLAND LOO PLANS AND SPECIFICATIONS, Change /Clarification – Add ITEM - 7)** FACTORY SUPPLIED PORTLAND LOO INSTALLATION INSTRUCTIONS WITH REFERENCE PICTURES

This amendment must be acknowledged by manually signing this amendment sheet and submitting it with the sealed bid documents.

All other terms, conditions, and specifications of the original Request for Proposal remain unchanged.

CITY OF FAIRBANKS



Robert Pristash, PE
City Engineer

3/24/2025

ACKNOWLEDGMENT

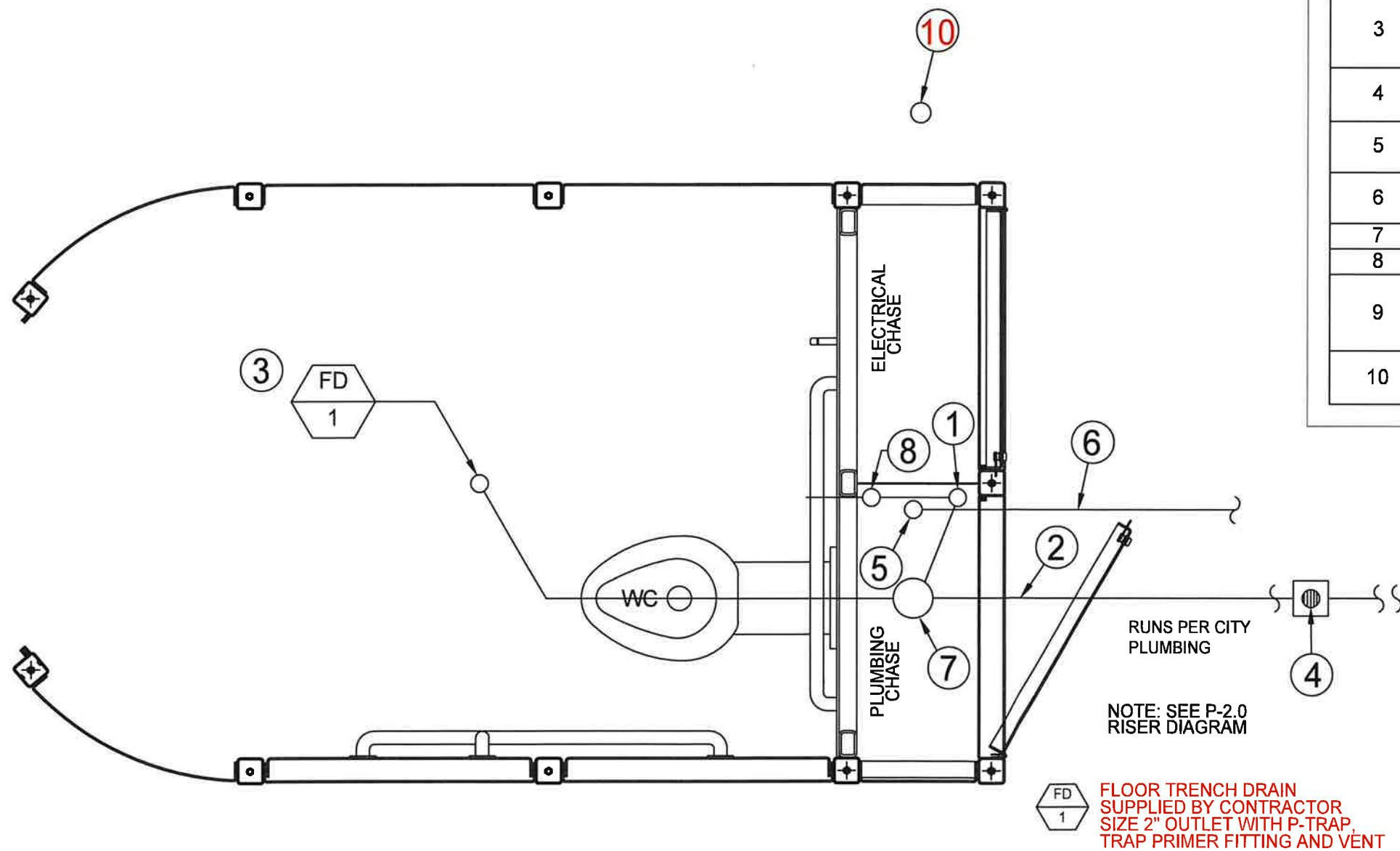
Signature

Date

Company Name

APPENDIX A – PORTLAND LOO PLANS AND SPECIFICATIONS

- 1) CONCRETE DEMO AND NEW PLAN
- 2) SANITARY SEWER PLAN AND PROFILE
- 3) MECHANICAL ROOM PLAN AND PROFILE
- 4) PORTLAND LOO PLANS
- 5) NEW CD1-CONCDETAILS
- 6) NOTES AND PHOTOS
- 7) FACTORY SUPPLIED PORTLAND LOO INSTALLATION INSTRUCTIONS WITH REFERENCE PICTURES



PLUMBING FLOOR PLAN

BILL OF MATERIAL

ITEM	QTY	DESCRIPTION	MFG.
1	ONE	2" VENT PIPE TUBE TO ROOF	VARIOUS
2	ONE	LINE TO P.O.C.	VARIOUS
3	ONE	ROUTE CW SUPPLY TO FLOOR DRAIN P-TRAP FROM TRAP PRIMING LOCATED IN PLUMBING CHASE	JAY R. SMITH
4	ONE	4" GRADE CLEAN-OUT (QTY & LOCATION PER LOCAL CODE)	VARIOUS
5	ONE	WATER INLET 1-1/2" C.W. SUPPLY SHOWN ON SHEET 7	VARIOUS
6	ONE	1-1/2" C.W. SUPPLY TO SOV SHOWN ON SHEET 7	VARIOUS
7	ONE	4" SEWER LINE CARRIER SHOW ON P2.0	VARIOUS
8	ONE	TRAP PRIMER VALVE (PER LOCAL CODE)	PRIME-RIGHT
9	ONE	WASH BASIN FLOOR DRAIN VENTING REQUIRED	VARIOUS
10	ONE	2" SEWER DRAIN FOR RECESSED HAND WASH	VARIOUS

1	07/08/24	INITIAL ISSUE	AYK						
REV	DATE	DESCRIPTION	DRN	APP'D					

MADDEN
FABRICATION

2550 NW 25th Place Portland, OR 97210
Phone: (503) 226-3968 Fax (503) 242-2446

FAIRBANKS, AK

PLUMBING DETAIL

NAME	DATE	SERIAL NO.	DRW. NO.
AYK	06/27/2024		P1.0

PORTLAND LOO PLANS AND SPECIFICATIONS

NOTES AND PHOTOS

- 1) The Portland Loo with lifting eye is fully assembled and weighs 6,013 lbs. The Portland Loo, Template and hardware requires transport from storage at the Dept. of Public Works, 2121 Peger Road, Fairbanks to site at 516 First Avenue. Loading available at storage site. (See Pictures)
- 2) Demolition of concrete sidewalk and area for installation of utilities completed in October 2024 with construction of sanitary sewer service. Concrete demolition for installation of floor drain and handwash drain remain to be completed. (See Pictures)
- 3) Construction of the 4-inch dia. insulated HDPE Sanitary Sewer Service from the proposed Loo site to the First Avenue Sanitary Sewer Main was completed in October 2024. (See Pictures)
- 4) Remaining Sanitary Sewer Service Plumbing includes contractor acquisition and installation of a trench floor drain with plumbing, vent and P-Trap Primer to Sanitary Sewer Service. Install supplied handwash drain basin, vent and plumbing to Sanitary Sewer Service. (See Plans)
- 5) A penetration in the concrete wall of the Mechanical Room with installation of a 1 ½-inch Copper Pipe was completed in October 2024. (See Pictures)
- 6) Existing penetrations in the concrete wall of the Mechanical Room are available for use for the required electrical service. (See Pictures)

Portland Loo Installation Instructions

Supplied:

- (1) Jig
- (11) Titan anchors

Miscellaneous hand/power tools necessary:

Impact with $\frac{3}{4}$ " socket

Two $\frac{3}{4}$ " wrenches

Alignment pin

Crane rigging

Masonry drill with $\frac{1}{2}$ " Masonry bit minimum length

Drill with $\frac{1}{2}$ ", $\frac{9}{16}$ " and $\frac{5}{8}$ " bit

Rotary laser

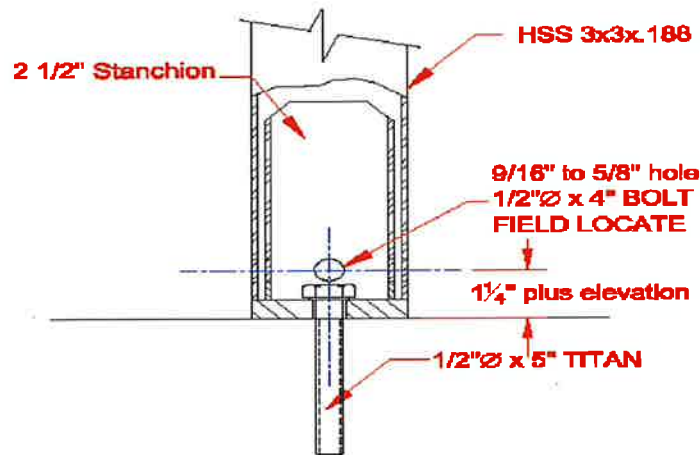
Step ladder

Air Compressor & blow nozzle (or bottle brush)

Installation Procedure:

1. Layout stanchion template per drawing T-1.00 and bolt together using supplied $\frac{3}{8}$ " bolts
2. Locate template on footing pad using main sewer line as an indexing point.-NOTE
IMPORTANT- Square or parallel template to control joints in concrete
3. Place stanchions in rectangular notches in template(careful not to move template)
4. Drill $\frac{1}{2}$ " hole through each stanchion to required 5" depth in locations specified on diagram T-1.00 *do not tighten anchors in stanchions*
5. Drill $\frac{1}{2}$ " hole in one of the front door stanchions
 - (1) Drive Titan anchor in 1"
 - (2) Move to electrical side of LOO and repeat the above
6. Using a laser level or long beam level, mark elevations at each stanchion point
7. Drilling $\frac{9}{16}$ " holes through stanchions.- foundation should be poured flat and level but some adjustment for sloped foundation is possible with laser leveling and drilling bolt holes in stanchions.-

- (1) High point elevation the hole will be drilled 1 1/4" up from the bottom of the stanchion baseplate. Remainder will be 1 1/4" plus the elevation difference.
- (2) Holes go through "ear" sides of stanchions



8. Install Stanchions PLUMB AND LEVEL in designated locations
 - (1) Use 3/4" impact wrench to install Titan masonry anchors.
 - (2) Note direction of 9/16" thru bolt holes all run lengthwise with LOO
 - (3) Stanchions themselves must be installed as plumb as possible. Use washers if necessary.
9. Make sure 4 1/2" sewer line does not exceed more than 1" above the foundation and water line is no more than 12" above foundation
10. Rig eye bolts on top of LOO to one central picking point.
 - (1) *Note* In the width of the LOO, optimum angle between slings/chains is 60 degrees.
 - (2) Make sure sewer line has boot before lowering the LOO
11. Pick Loo and set on stanchions as follows in order
 - (1) Align toilet carrier boot with main sewer line
 - (2) As columns slide onto stanchions, install bolts in holes as they align
 - (3) Once the majority of the bolts are in, it may be necessary to jack certain columns to align holes. DO NOT LIFT AT LOUVERS THEY WILL BEND.
 - (4) The LOO must sit level for the front door to operate properly.
12. Tighten all bolts and sewer line boot
13. Hook up water main
14. Hook up main electrical
15. Adjust front door closer if necessary. Follow provided instructions.
16. Silicone seal between water closet chase and concrete. Use backing rod for large gaps

Technical assistance is available by calling (877)-902-6424





Reference - Existing
Utilities for
Installation of
Clean-Out

Looking
South



Sanitary
Sewer
Service

