



800 Cushman Street
Fairbanks, AK 99701

Telephone (907)459-6745
Fax (907)452-5913

**LATHROP DITCH IMPROVEMENTS
ITB-25-05**

ADDENDUM NO. 3

March 11, 2025

**Invitation for Bid No.: ITB-25-05
Bid Opening Date and Time: 2:30 P.M., March 18, 2025**

The following changes, clarifications, and or additions are hereby made to the City of Fairbanks LATHROP DITCH IMPROVEMENTS, ITB-25-05.

The Contract Documents are Modified as Follows:

Delete the Bid Schedule in its entirety and substitute the revised Bid Schedule.

The Plans are Modified as Follows

Delete Plan Sheet Nos. A2, U3, U4, and U5 and substitute revised Plan Sheets Nos. A2, U3, U4, and U5.

Add new Supplemental Detail – Storm Drain Manhole Detail

All other terms, conditions, and specifications of the original Invitation for Bid remain unchanged.

CITY OF FAIRBANKS

A handwritten signature in cursive script, reading "Robert H. Pristash", is written over a horizontal line.

**Robert H. Pristash, P.E.
City Engineer**

BID SCHEDULE - REVISED PER ADDENDUM #1 & 3

The Bidder shall insert a unit bid price or a lump sum price in figures opposite each pay item and total price for which an estimated quantity appears in the bid schedule. The estimated quantity of work for payment on a lump sum basis will be “all required” and as further specified in the contract.

City of Fairbanks ITB 25-05		LATHROP DITCH IMPROVEMENTS			
BID SCHEDULE		BASE BID			
Item No.	Item Description	Pay Unit	Quantity	Unit Price	Amount Bid
202.0001.0000	REMOVAL OF STRUCTURES AND OBSTRUCTIONS	LUMP SUM	ALL REQUIRED		
203.0006.0000	BORROW, SELECTED MATERIAL TYPE A	TON	2565		
603.0020.0012	END SECTION FOR 12 INCH	EACH	1		
603.0020.0048	END SECTION FOR 48 INCH	EACH	1		
603.0021.0012	CORRUGATED POLYETHYLENE PIPE 12 INCH	LINEAR FOOT	30		
603.0021.0048	CORRUGATED POLYETHYLENE PIPE 48 INCH	LINEAR FOOT	1195		
604.0001.0000	STORM SEWER MANHOLE, 72 INCH	EACH	5		
640.0001.0000	MOBILIZATION AND DEMOBILIZATION	ALL REQUIRED	LUMP SUM		
642.0001.0000	CONSTRUCTION SURVEYING	ALL REQUIRED	LUMP SUM		
643.0002.0000	TRAFFIC MAINTENANCE	ALL REQUIRED	LUMP SUM		
A: Total Base Bid:					
B: Local Bidders Preference (5%), \$50,000 max.					
(A – B): Adjusted Base Bid Amount:					

P:\Lathrop Ditch\23rd - Lathrop Storm Drainage 2023\Civil3D Drawing Files\L3 Production\QUANTITIES-NOTES-ABBREVIATIONS Tue, Mar/11/25 01:04pm

ESTIMATE OF QUANTITIES

ITEM NO.	PAY ITEM	PAY UNIT	QUANTITY
202.0001.0000	REMOVAL OF STRUCTURES AND OBSTRUCTIONS	LUMP SUM	ALL REQUIRED
203.0006.0000	BORROW, SELECTED MATERIAL TYPE A	TON	2565
603.0020.0012	END SECTION FOR 12 INCH	EACH	1
603.0020.0018	END SECTION FOR 18 INCH	EACH	2
603.0020.0048	END SECTION FOR 48 INCH	EACH	1
603.0021.0012	CORRUGATED POLYETHYLENE PIPE 12 INCH	LINEAR FOOT	30
603.0021.0018	CORRUGATED POLYETHYLENE PIPE 18 INCH	LINEAR FOOT	50
603.0021.0048	CORRUGATED POLYETHYLENE PIPE 48 INCH	LINEAR FOOT	1195
604.0001.0000	STORM SEWER MANHOLE, 72 INCH	EACH	5
640.0001.0000	MOBILIZATION AND DEMOBILIZATION	LUMP SUM	ALL REQUIRED
642.0001.0000	CONSTRUCTION SURVEYING	LUMP SUM	ALL REQUIRED
643.0002.0000	TRAFFIC MAINTENANCE	LUMP SUM	ALL REQUIRED

SUBSIDIARY QUANTITY ESTIMATES

ITEM DESCRIPTION	UNIT	QUANTITY
PIPE BEDDING	CUBIC YARD	1,505
BACKFILL	CUBIC YARD	1310
SEEDING	SQUARE YARD	3,200
HMA, TYPE II; CLASS B	TON	11
ASPHALT BINDER, GRADE 52-28	TON	0.6

ESTIMATING FACTORS

ITEM NO.	PAY ITEM	FACTOR
203.0006.0000	BORROW, SELECTED MATERIAL TYPE A	145 LB / CF
401.0001.002B	HMA, TYPE II; CLASS B	150 LB / CF
401.0004.0000	ASPHALT BINDER, GRADE PG 52-28	5.5% WEIGHT OF 401.0001.002B

GENERAL NOTES

- GRADES, ALIGNMENTS, APPROACH LOCATIONS, LENGTHS AND LOCATIONS OF CONDUIT RUNS SHOWN ON THESE PLANS ARE SUBJECT TO MINOR REVISIONS BY THE ENGINEER. ALL DISTANCES SHOWN IN THE PLANS ARE HORIZONTAL MEASUREMENTS.
- SAWCUT ALL MATCH LINES WHERE NEW CONSTRUCTION OF PAVEMENT, SIDEWALK OR CURBING ABUTS EXISTING. SAWCUTS SUBSIDIARY TO RESPECTIVE PAY ITEMS.
- APPLY WATER FOR DUST CONTROL DAILY OR AS DIRECTED BY THE ENGINEER. PAY SUBSIDIARY TO PAY ITEM 643.0002.0000 TRAFFIC MAINTENANCE.
- PAYMENT FOR PAY ITEM 202.0001.0000 REMOVAL OF STRUCTURES AND OBSTRUCTIONS SHALL BE A LUMP SUM PAYMENT FOR REMOVING ALL ITEMS IN CONFLICT WITH THE IMPROVEMENTS. THESE ITEMS ARE NOT LISTED. IT IS THE CONTRACTORS RESPONSIBILITY TO FIELD VERIFY THE NATURE OF THIS WORK BEFORE BIDDING.
- ALL PAYMENTS REQUESTED BY THE CONTRACTOR SHALL BE DEVELOPED BY THE CONTRACTOR IN A FORM ACCEPTABLE TO THE ENGINEER. PAY ESTIMATES SHALL BE SUBMITTED BY THE CONTRACTOR AND APPROVED BY THE ENGINEER.
- CONTRACTOR IS RESPONSIBLE FOR PROVIDING THEIR OWN STAGING AREA.
- NUMEROUS UNDERGROUND UTILITIES EXIST WITHIN THE PROJECT CORRIDOR. THE CONTRACTOR SHALL CONTACT UTILITY OWNERS AND GET LOCATES PRIOR TO EXCAVATION.

ABBREVIATIONS

ABD - ABANDONED
AC - ASPHALT CONCRETE
AP - ANGLE POINT
ABC - AGGREGATE

BASE COURSE
BK SDWK - BACK OF SIDEWALK
BLDG - BUILDING
BL - BASELINE
BOP - BEGINNING OF PROJECT
BV - BUTTERFLY VALVE

C - CONDENSATE CB - CATCH BASIN
CC - CURB CUT
CI - CAST IRON
CL - CENTER LINE
CONC - CONCRETE
CS - CONDENSATE SERVICE
CSP - CORRUGATED STEEL PIPE

D - DUCT BANK
DIP - DUCTILE IRON PIPE
DL - DITCH LINE
DG - DOWN GUY
DW - DRIVEWAY

E - EAST
e - SUPERELEVATION
EA - EACH
ELEV - ELEVATION
EOP - END OF PROJECT
EP - EDGE OF PAVEMENT
ES - END SECTION
EXIST - EXISTING

FG - FINISH GRADE
FH - FIRE HYDRANT
FL - FLOW LINE
FLG - FLANGE
FOC - FACE OF CURB
FRM - FRAME
FW - FLUSHWELL

G - GUTTER
GP - GRADE POINT
GRP - GUARD POST
GR - GRADE
GRT - GRATE
GV - GATE VALVE

HB - HORIZONTAL BEND
HDPE - HIGH DENSITY POLYETHYLENE
HPS - HIGH PRESSURE SODIUM LUMINAIRE
HWR - HOT WATER RETURN
HWS - HOT WATER SUPPLY
HWSS - HOT WATER SERVICE SUPPLY

ID - INSIDE DIAMETER
IE - INVERT ELEVATION
INS - INSULATION

L - LENGTH OF CURVE
LTDL - LEFT DITCH LINE
LT - LEFT
LF - LINEAL FEET

MAX - MAXIMUM
MB - MAILBOX
MH - MANHOLE
MIN - MINIMUM
MON - MONUMENT
MV - MERCURY VAPOR LUMINAIRE

NC - NORMALLY CLOSED
NE - NORTHEAST
NW - NORTHWEST
N - NORTH
N.I.C. - NOT IN CONTRACT

OD - OUTSIDE DIAMETER
OG - ORIGINAL GROUND

PC - POINT OF CURVATURE
PCC - POINT OF COMPOUND CURVE
PI - POINT OF INTERSECTION
PIV - POST INDICATOR VALVE
PL - PROPERTY LINE
POT - POINT ON TANGENT
PRC - PROPERTY CORNER
PP - POWER POLE
PT - POINT OF TANGENCY
PLVC - POLYVINYL CHLORIDE
PUE - PERMANENT UTILITY EASEMENT
PVC - POINT OF VERTICAL CURVATURE
PVI - POINT OF VERTICAL INTERSECTION
PVMT - PAVEMENT
PVT - POINT OF VERTICAL TANGENCY

R - RADIUS
RTDL - RIGHT DITCH LINE
RMC - RIGID METAL CONDUIT
ROW - RIGHT OF WAY
R&R - REMOVE AND REPLACE
RT - RIGHT
RPM - REINFORCED PLASTIC MORTAR

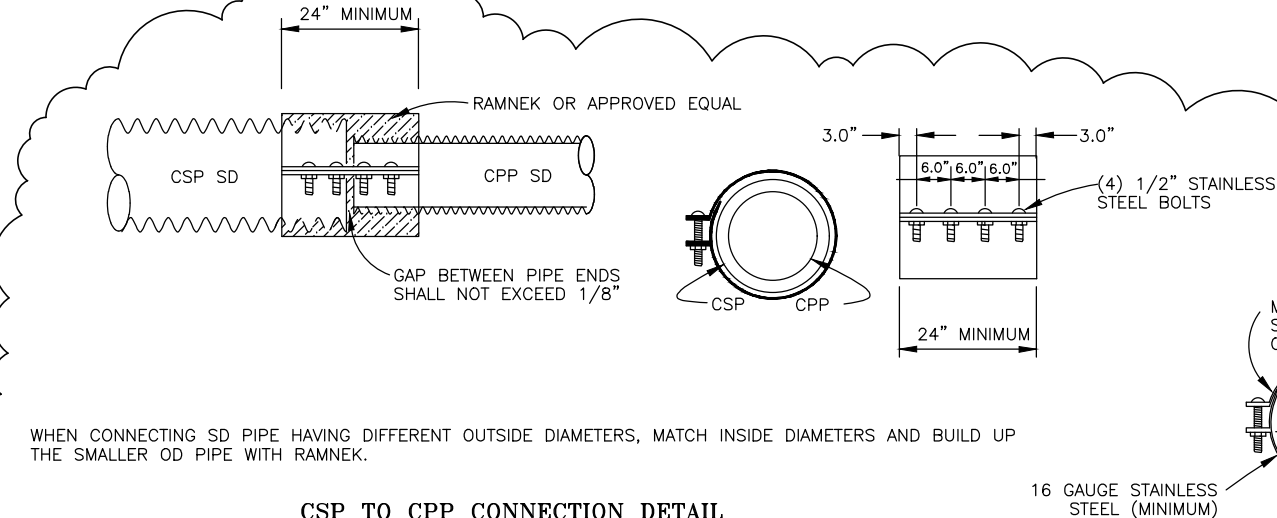
SMTA - SELECTED MATERIAL TYPE A
s - SLOPE
S - SOUTH
SE - SOUTHEAST
SM - SEWER MAIN
SMH - SEWER MANHOLE
SMHS - SEWER MANHOLES
SCH - SCHEDULE
SD - STORM DRAIN
SI - STREET INTERSECTION
SL - STREET LIGHT
SP - STEEL PIPE
SS - SEWER SERVICE
ST - STEAM
STA - STATION
STS - STEAM SERVICE
SW - SOUTHWEST

T - TELEPHONE
TC - TOP OF CURB
TCP - TEMP. CONSTRUCTION PERMIT
TOC - TOP OF CONDUIT
TOP - TOP OF PIPE
TYP - TYPICAL

UG - UNDERGROUND

VB - VALVE BOX

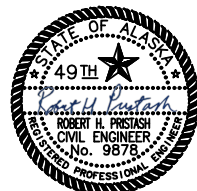
W - WEST
WM - WATER MAIN
WS - WATER SERVICE
WSP - WOOD STAVE PIPE



CSP TO CPP CONNECTION DETAIL

NOT TO SCALE

GENERAL NOTES, ABBREVIATIONS, AND ESTIMATE OF QUANTITIES



03/11/2025

02/26/2025	ADDENDUM #1	RHP / KLL
03/11/2025	ADDENDUM #3	RHP / KLL
DATE	REVISION	BY

SCALE: NONE

DESIGNED: RHP/KLL
DRAWN:
CHECKED: RHP
DATE: 01/24/2025

APPROVED

CITY ENGINEER

DATE



LATHROP DITCH IMPROVEMENTS

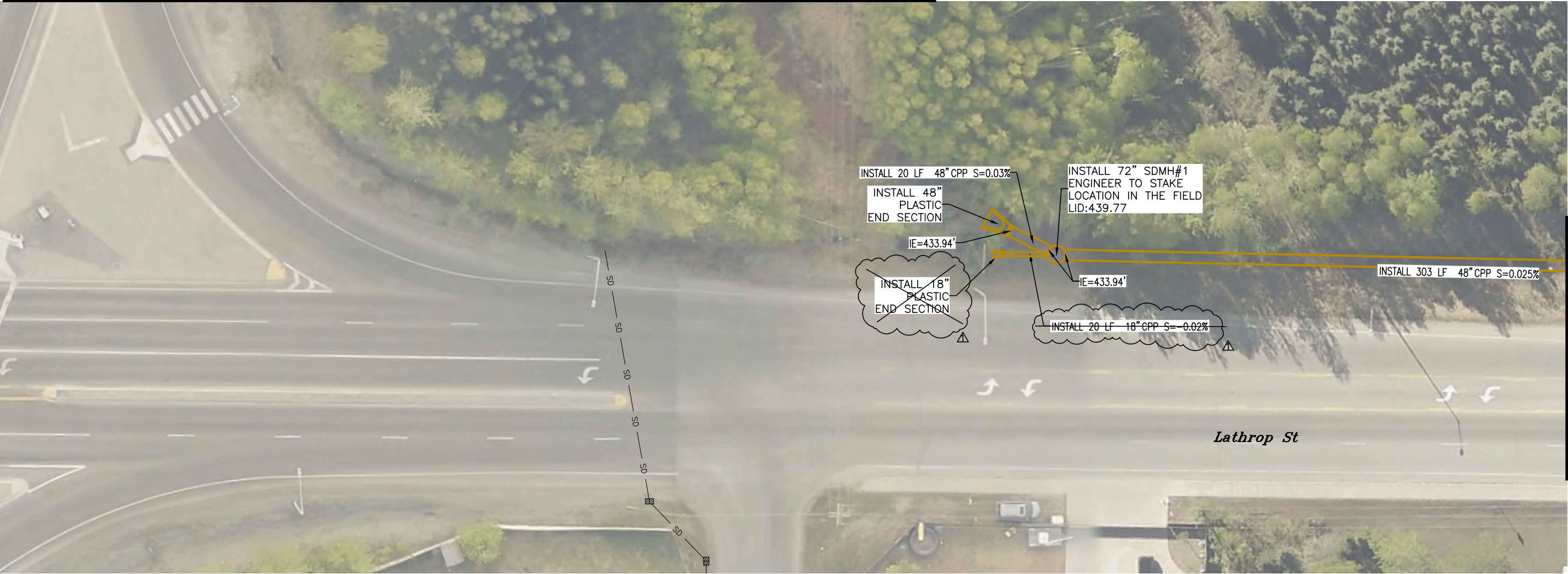
CITY OF FAIRBANKS, ALASKA
Engineering Department
Project ITB-25-05

A2

OF 10
SHEETS



MATCH SHEET U2 LINE




STORM DRAIN NOTES:

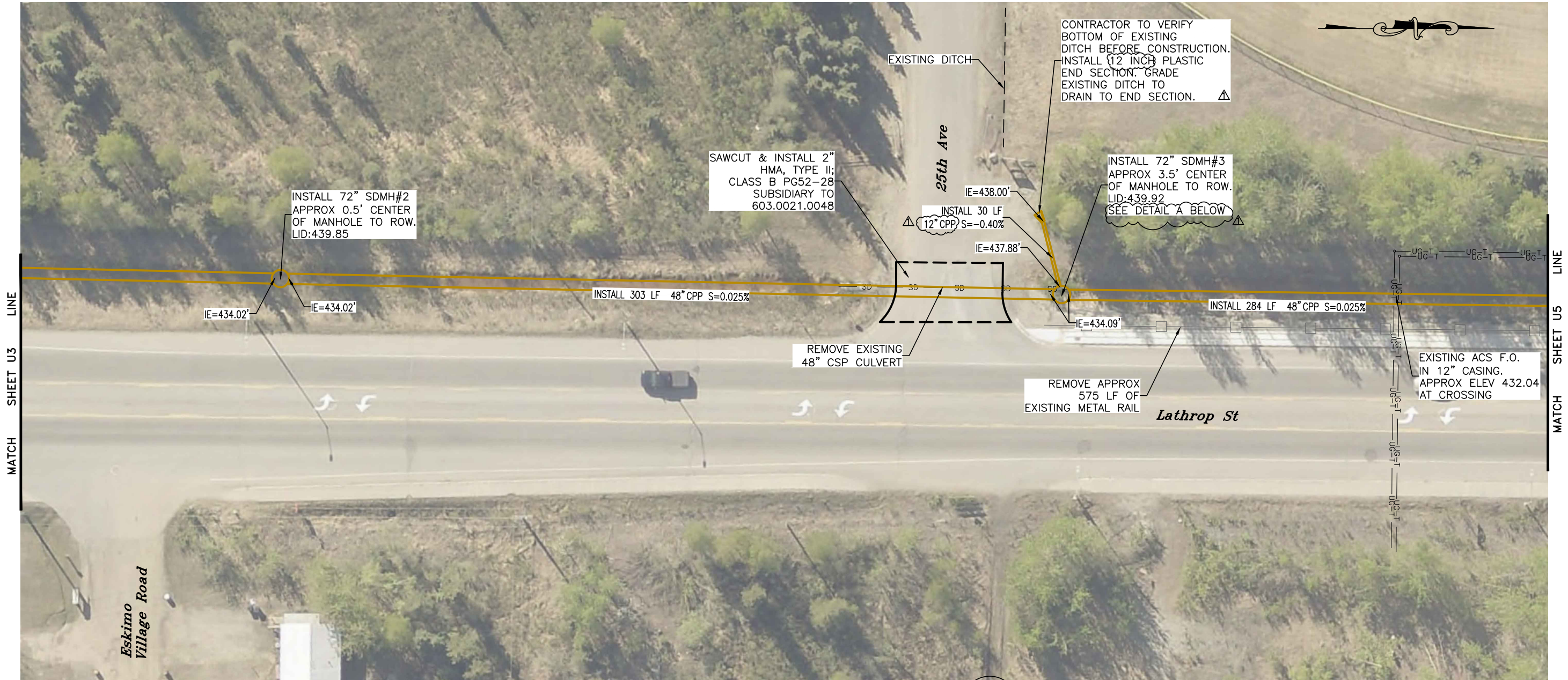
1. INSTALL NEW 48" CPP STORM DRAIN PIPE IN EXISTING DITCH.
2. ENGINEER WILL PROVIDE TMBs AND STAKE ROW FOR OFFSET TO PIPE AND MANHOLES.
3. CONTRACTOR TO USE LOW PROFILE STORM DRAIN MANHOLE FRAMES (BASIS OF DESIGN: D&L PART # A-2107
4. 48-INCH CPP PIPE OPENINGS IN MANHOLES SHALL BE 1" LARGER THAN THE O.D. OF PIPE.

STORM DRAIN



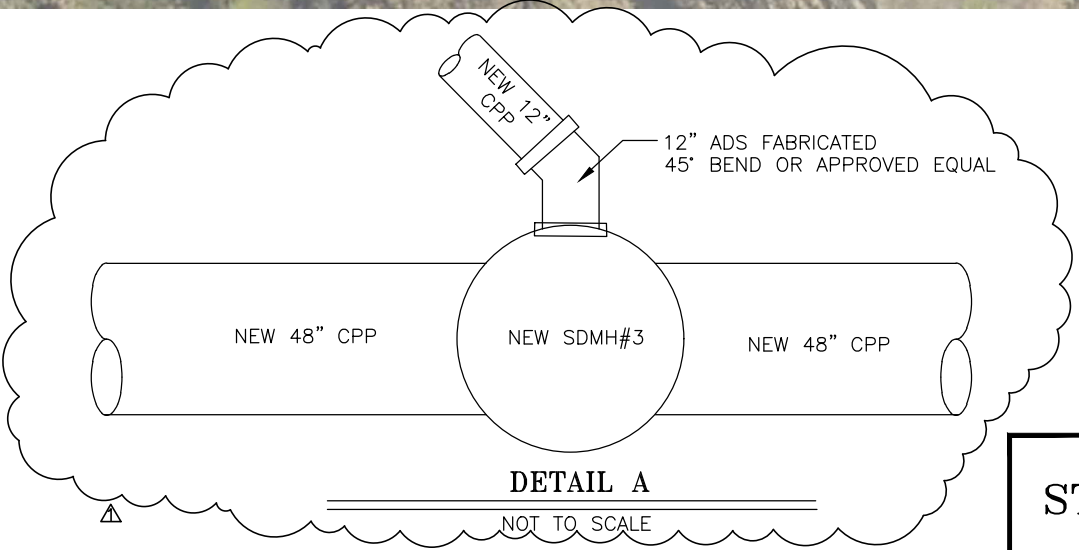
03/10/2025	ADDENDUM #3	RHP / KLL	SCALE:	DESIGNED: RHP/KLL	APPROVED	 LATHROP DITCH IMPROVEMENTS	CITY OF FAIRBANKS, ALASKA Engineering Department Project ITB-25-05	U3 OF 10 SHEETS
			1"=20' HORIZ., 1"=2' VERT. (FULL SIZE)	DRAWN:				
			1"=40' HORIZ., 1"=4' VERT. (HALF SIZE)	CHECKED: RHP	CITY ENGINEER			
DATE	REVISION	BY		DATE: 01/24/2025	DATE			


P:\Lathrop Ditch\23rd - Lathrop Storm Drainage 2023\Civil3D Drawing Files\L3 Production\P-P Storm Drain-GRADING04 Tue, Mar/11/25 01:12pm

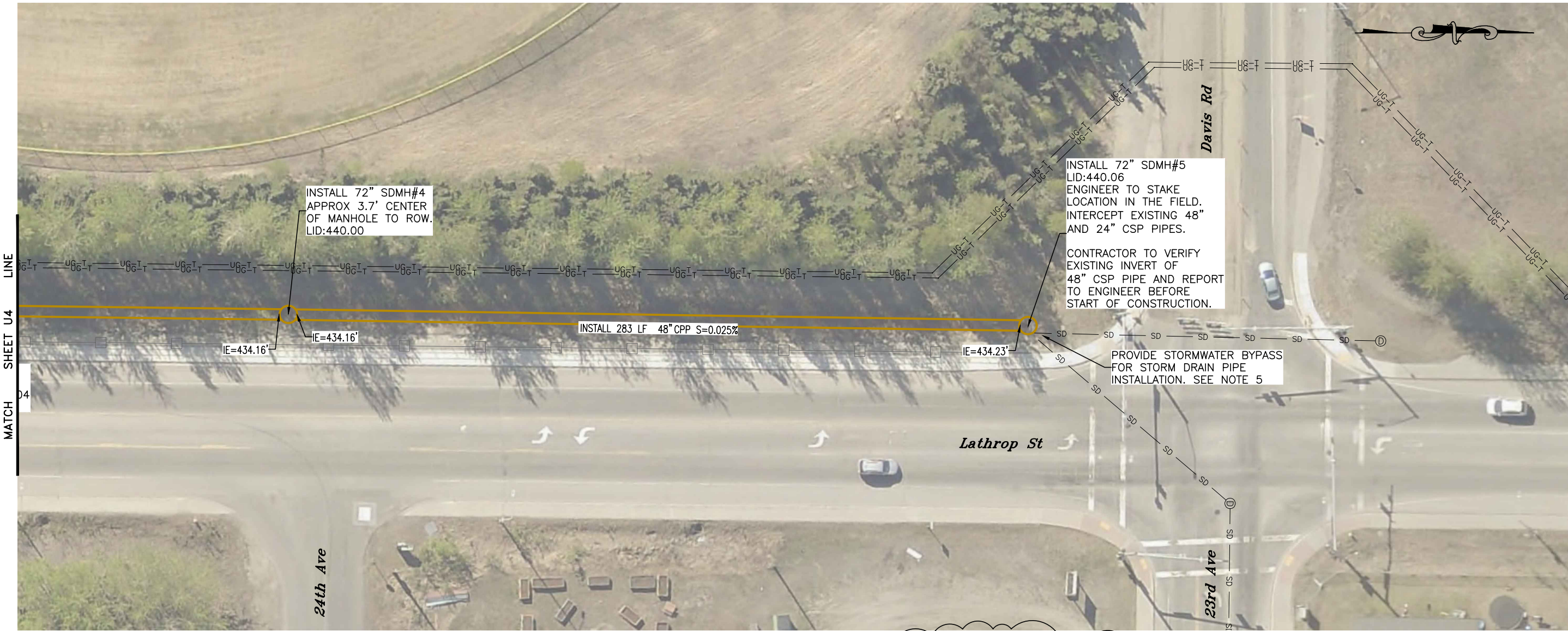


STORM DRAIN NOTES:

1. INSTALL NEW 48" CPP STORM DRAIN PIPE IN EXISTING DITCH.
2. ENGINEER WILL PROVIDE TMBs AND STAKE ROW FOR OFFSET TO PIPE AND MANHOLES.
3. CONTRACTOR TO USE LOW PROFILE STORM DRAIN MANHOLE FRAMES (BASIS OF DESIGN: D&L PART # A-2107
4. 48-INCH CPP PIPE OPENINGS IN MANHOLES SHALL BE 1" LARGER THAN THE O.D. OF PIPE.

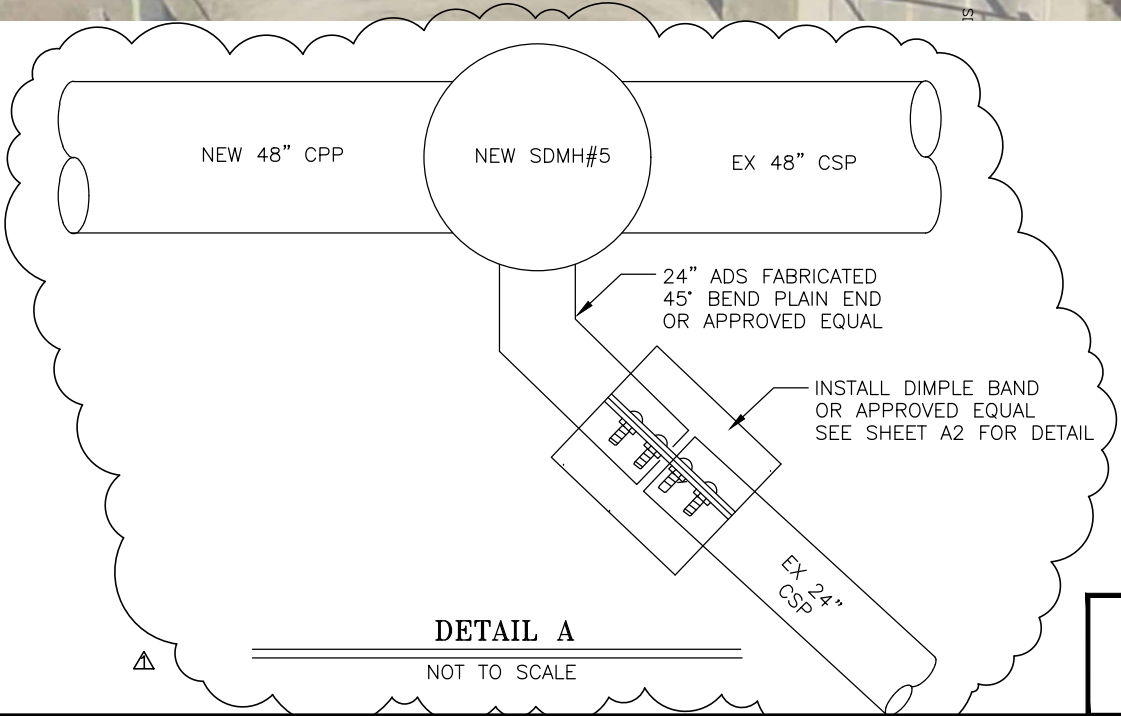



03/10/2025	ADDENDUM #3	RHP / KLL	SCALE:	DESIGNED: RHP/KLL	APPROVED	 LATHROP DITCH IMPROVEMENTS	CITY OF FAIRBANKS, ALASKA Engineering Department Project ITB-25-05	U4
			1"=20' HORIZ., 1"=2' VERT. (FULL SIZE)	DRAWN: CHECKED: RHP DATE: 01/24/2025	CITY ENGINEER			
			1"=40' HORIZ., 1"=4' VERT. (HALF SIZE)					
DATE	REVISION	BY			DATE			



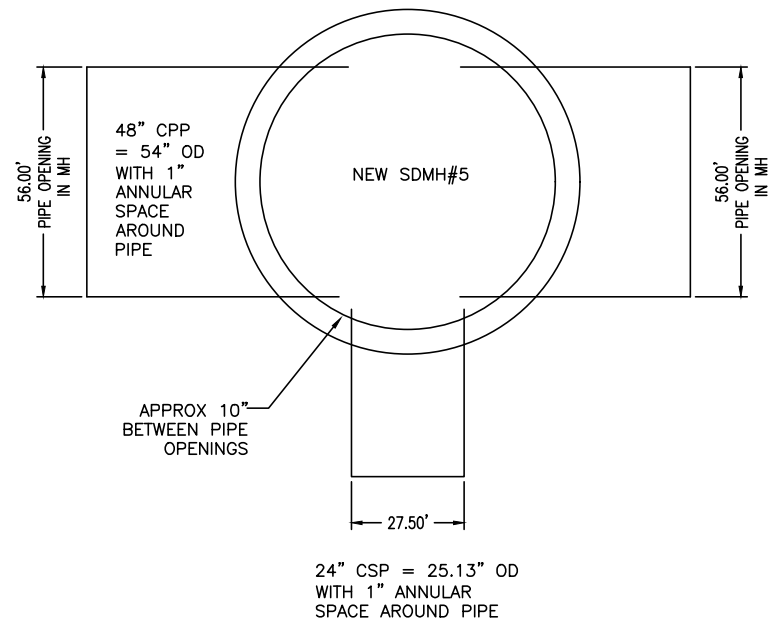
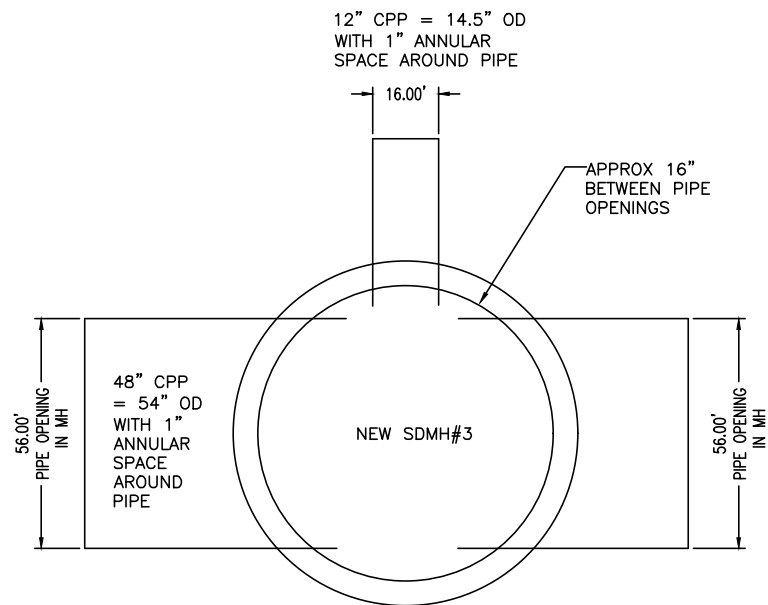
STORM DRAIN NOTES:

1. CONTRACTOR TO VERIFY EXISTING DITCH ELEVATION AS SHOWN ON SHEET U1 AND EXISTING 48" CSP INVERT AS SHOWN ON SHEET U5 AND REPORT TO ENGINEER BEFORE INSTALLATION OF NEW 48-INCH CPP STORM DRAIN PIPE.
2. INSTALL NEW 48" CPP STORM DRAIN PIPE IN EXISTING DITCH.
3. ENGINEER WILL PROVIDE TMBs AND STAKE ROW FOR OFFSET TO PIPE AND MANHOLES.
4. CONTRACTOR TO USE LOW PROFILE STORM DRAIN MANHOLE FRAMES (BASIS OF DESIGN: D&L PART #A-2107).
5. CONTRACTOR TO PROVIDE STORMWATER BYPASS DURING STORM DRAIN INSTALLATION. ESTIMATED FLOW 561 GPM (MEASURED ON 2/14/2025) AND 552 GPM (MEASURED ON 2/18/2025). THIS WORK IS SUBSIDIARY TO PAY ITEM 603.0021.0048.
5. 48-INCH CPP PIPE OPENINGS IN MANHOLES SHALL BE 1" LARGER THAN THE O.D. OF PIPE.



03/10/2025	ADDENDUM #3	RHP / KLL	SCALE:	DESIGNED: RHP/KLL	APPROVED	 <div>LATHROP DITCH IMPROVEMENTS</div>	CITY OF FAIRBANKS, ALASKA Engineering Department Project ITB-25-05	U5
			1"=20' HORIZ., 1"=2' VERT. (FULL SIZE)	DRAWN:	CITY ENGINEER			OF 10
			1"=40' HORIZ., 1"=4' VERT. (HALF SIZE)	CHECKED: RHP				SHEETS
DATE	REVISION	BY		DATE: 01/24/2025	DATE			

P:\Lathrop Ditch\23rd - Lathrop Storm Drainage 2023\Civil3D Drawing Files\U3 Production\P-P Storm Drain-GRADING05 Tue, Mar/11/25 01:28pm



STORM DRAIN MANHOLE DETAILS SUPPLEMENTAL DETAIL