



MEPHC Newsletter

Workforce Standards

The Special Commission on Local and Regional Public Health established a [Blueprint for Public Health Excellence](#) that outlined a set of [workforce standards](#) for public health professionals.

The Public Health Excellence Grant aims to support staff in achieving these standards by paying for training, certifications and credentialing.

The MEPHC can help you achieve your Certified Health Officer, Registered Sanitarian or equivalent or Certified in Public Health credentials. If you're interested in learning more, e-mail Annette for more information!

Massachusetts Local Public Health Training Program Tier II

Deadline to apply: September 16 at 11 pm

The Local Public Health Training Program - [Housing and Food Tier 2](#), formerly known as MA PHIT Housing and MA PHIT Food, are designed for local public health professionals charged with enforcing housing and food-related laws and regulations. This 4-day hybrid training program prepares public health professionals with in-depth knowledge of the food and housing inspection process before their Tier 3 - Applied Practice led by HUB trainers.

- Please ensure you have completed Tier I coursework in advance of registering for these sessions: [Food](#) TRAIN MA Learning Plan and/or [Housing](#) TRAIN MA Learning Plan.

Boston University will be providing Tier 2 Training Opportunities

Housing

Total Learning Time: 18 hours

In Person Date & Time: (6 hours + Lunch)

Tuesday, Nov. 12th, 2024 at 8am-3:30pm

Location: Marriott Hotel in Springfield, MA

Virtual Dates: (4 hrs/each)

Nov. 20th, Nov. 21st, and Dec. 4th at 8:30am-12:30pm

Food

Total Learning Time: 24 hours

Virtual Dates and Times: (4 hrs/each)

Oct. 15th, 16th, 17th at 8:30am-12:30pm

In Person Dates: (6 hrs/each + Lunch)

Wednesday, Oct. 23rd at 8am-3:30pm

Thursday, Oct. 24th at 8am-3:30pm

Location: New Bedford Health Department

Upcoming Events

MEPHC Nurses Meeting
September 5 | Virtual

[MHOA Quarterly Meeting](#)
September 19 | Stow

[Yankee Conference*](#)
October 16-18 | Mystic, CT

[MHOA Annual Conference](#)
November 13 - 15 | Springfield

[NEFD OA Food Protection Seminar*](#)
November 13-14 | Burlington, VT

Interested in attending one of these events? E-mail Annette at agarcia@northandoverma.gov



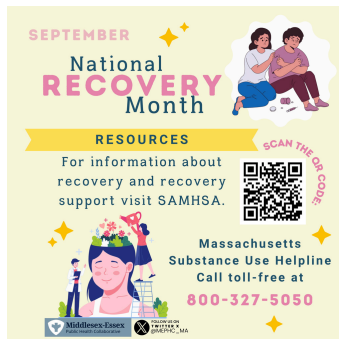
We're Hiring!

The MEPHC is hiring a Regional Health Communication Specialist. Share the **job posting** with your network!

* PHE Funds can only cover registration fees for this event. Travel & lodging must be covered by local budgets.

Resource Center

September Health Topic

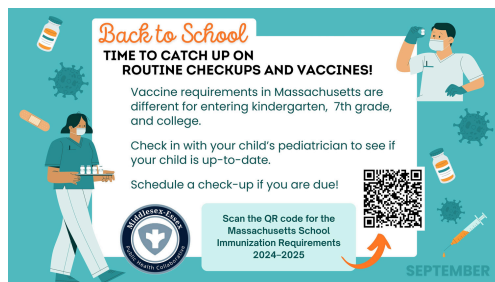


Each month, Lea Anne puts together a graphic for a specific health topic. During the month of September she focused on National Recovery Month and Back-to-School vaccines.

Use this and other graphics created to help promote prevention through flyers, social media and email communications!

[Access Resources Here](#)

Back to School



Lea Anne has created social media images to encourage residents to access back-to-school vaccines for children.

[Access Resources Here](#)

On-Site Food Labeling

All packaged foods must be labeled in accordance with the Massachusetts and federal labeling regulations, including all foods intended for retail sale that are manufactured in licensed residential kitchens. **What are you required to do?**

Raw Meats and poultry that are packaged on-site for customers must always contain the safe handling label.



Prepared foods that you make on-site and pre-package must contain a label with the following:



- Product Name (common name)
- Business name & address
- Ingredient list (from most to least by weight)
- Product net weight in ounces or pounds AND grams or liters
- Allergens must appear in one of three ways:
 - List in name or ingredient list
 - List in the ingredient list if it does not clearly identify the allergen. Example: Flour (wheat)
 - List after the word "contains". Example: Contains eggs

Food Safety Manual

Share this manual with your food establishments to provide guidance on basic food safety principles. We are currently working on translated versions as well!

[Access Resources Here](#)

Technical Support

The Office of Local and Regional Health (OLRH) supports local public health in improving health for all by providing local public health with the resources, tools, and support needed to promote and protect the health of their communities. We offer training and technical support for local public health's unique challenges and needs.

Technical support can be provided to municipalities in the following areas:

- Performance Standards
- Workforce Development
- Data Support
- Local Political Support

[Learn More & Request Support](#)