



MEPHC Newsletter

Summer Public Health Nurse Updates

Please be aware of a change in Lea Anne's schedule starting the week of June 16th. She will be working a summer schedule from Monday through Wednesday, 7:00 AM to 3:30 PM. While this will be her primary schedule, she is flexible and available for additional coverage if needed, provided with appropriate notice. Lea Anne will return to her regular schedule in September.

In addition to her adjusted hours, Lea Anne will also be working remotely for an extra four hours each week to accommodate increased responsibilities. This will include handling communication needs, providing MAVEN coverage, and monthly reportable disease reporting.

Henry will remain on-board as a regional epidemiologist and provide MAVEN coverage as needed for an additional 6-8 months! The current SOP will not be updated at this time.

Fall Conference Registration

MEPHC will be submitting a group registration for any staff interested in attending the 2025 Yankee Environmental Health Conference and the 2025 MHOA Annual Conference.

Complete the registration form by June 4th to guarantee your registration!

[Click here to register](#)

Upcoming Events

Check out the training calendar!

MEPHC Nurses Meeting
June 5 | Virtual

MEPHC Strategic Planning
June 11 | Virtual

Substance Use Workgroup
July 24 | NA Fire Department

SAVE THE DATE!
Special Processes Training
October 15

SAVE THE DATE!
Stop The Bleed ToT
November 18



Resource Center



National Safety Month

Workplace safety

Proper Safety Gear Training
Emergency Procedures Hazard Prevention

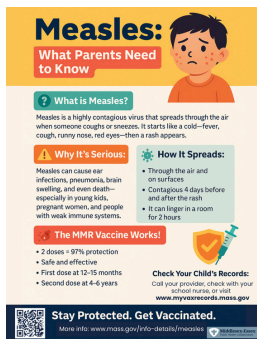
Middlesex-Essex Public Health Collaborative www.mephc.org

Monthly Health Topic

June is National Safety Month!

Lea Anne is highlighting five key safety topics: workplace, road, fire, home safety, and mental health. Check out our June blog post for social media images you can share and links to helpful local resources.

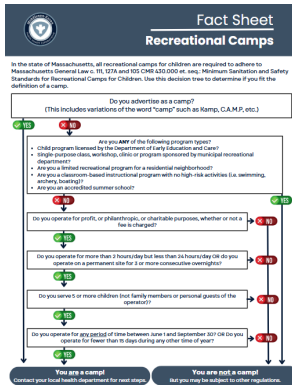
[Access Resources Here](#)



Updated Measles Health Education

The Measles PSA has been updated based on current case numbers. This along with a measles health education flyer for parents have been added to the website resources.

[Access Resources Here](#)



Am I a camp?

MEPHC developed a guidance document to assist with determining if summer programming is considered a camp.

[Access Document Here](#)



MEPHC Lending Library

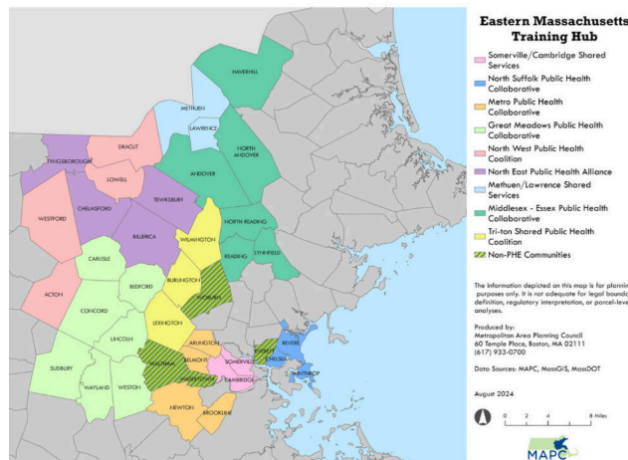
MEPHC has started a lending library of resources and study guides. E-mail agarcia@northandoverma.gov to request a book to borrow. Our current inventory includes:

- HACCP Verification Guide
- CHO Study Guide
- REHS Study Guide

Looking for other materials? Let us know!

Partner Highlight

EASTERN MASSACHUSETTS TRAINING HUB



Eastern Massachusetts Public Health (EMPH) Training Hub is one of nine training hubs throughout the state, funded by the Massachusetts Department of Public Health (DPH) and coordinated by the Office of Local and Regional Health (OLRH). Our hub covers nine Shared Services Arrangements, with 35 municipalities and three non-PHE municipalities.

The Training Hub program is part of the cornerstone of the Workforce Development initiatives to strengthen the competencies and capacity of the local public health workforce to not only meet the current Workforce Standards, aligned in the Blueprint for Public Health, but to develop leaders in transforming the local public health system. The Training Hub Program is part of a 3-tiered model that includes basic self-paced on-line training modules, in-depth knowledge-based competency development in the classroom, and hands on, competency and skills development in applied practice.

These different levels of training act as learning building blocks and help create a comprehensive training infrastructure with the goal of increasing the pool of trained local public health professionals, increasing the capacity for local and regional public health (LPH) to meet the standards. Our program is designed to provide uniform and standardized training for the Local Public Health workforce

Hub Trainers conduct hands-on competency training in various areas such as housing, food, camps, pools, and Title 5 to local public health workforce in their coverage area. In addition to the Training Hub Program, the workforce in our coverage area could contact us for mentoring or assistance regarding these various local public health topics.

Elsa Zhao (ezhao@mapc.org, 617-894-1114) is the Lead Public Health Trainer and Felix Garcia (fgarcia@mapc.org, 617-837-2161) is the Regional Public Health Trainer for the Eastern MA Hub. We both come from many years of experience working as inspectors in Local Public Health. Please don't hesitate to reach out to either of us!

[Learn More](#)

Middlesex-Essex Public Health Collaborative

mephc@northandoverma.gov
www.mephg.org