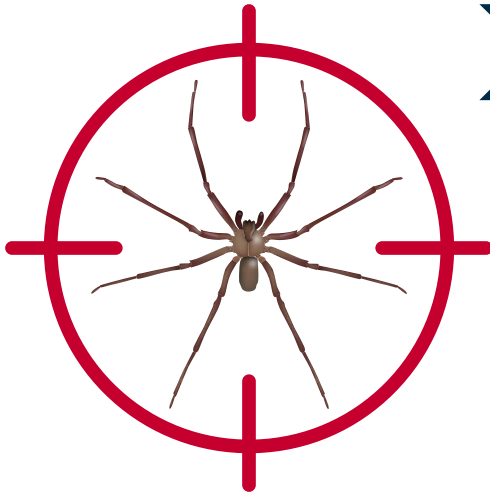


Brown recluse spiders are not aggressive and most bites occur in response to pressure when a spider becomes trapped against bare skin. For this reason, bites are rare, even in homes with severe infestations.



## WHAT CAN I DO TO AVOID BEING BITTEN?

1. Keep items such as clothing, bedding, etc. off the floor.
2. Shake out shoes and clothing before getting dressed.
3. Remove bed skirts and inspect bedding before going to bed.
4. If you store clothing, shoes, papers etc. use airtight containers and seal them with tape.
5. Reduce clutter and vacuum regularly under furniture.
6. Inspect and clean children's rooms often and keep toys in airtight storage containers.
7. Don't handle live spiders (not even on glue board monitors).
8. Don't miss any of your scheduled services.
9. If you purchase a large item, inspect it as carefully as possible before bringing it into the home.
10. If you purchase items from antique sales, garage sales or consignment sales try to remove it from the packaging before bringing it into the home.
11. If you will be using a storage facility, try to have it treated before moving your items in.



## WHAT ARE THE SYMPTOMS OF A BROWN RECLUSE BITE?



The initial bite is generally painless. Findings of a raised, hardened area and associated redness may not be seen for 6 to 12 hours. Bites that progress to necrosis tend to show progression in 48 to 72 hours. Central blistering with surrounding gray to purple discoloration may appear. The site is surrounded by a ring of blanched skin and a large area of redness, producing the “red, white and blue” sign typical of a brown recluse bite. Only approximately 1 in 10 bites result in necrosis. The physical reaction depends on the amount of venom injected, bite location and individual sensitivity to the bite. Most Brown Recluse bites heal without severe scarring.



## WHAT SHOULD I DO IF BITTEN?



Remain calm. Apply an ice pack directly to the bite and immediately seek medical attention. It is important to collect the spider for a positive identification.



## THINGS TO KEEP IN MIND



This Brown Recluse Reduction program is designed to minimize the Brown Recluse spider population. Brown Recluse spider reduction is best achieved through a combination of efforts including monitoring, inspection, pest control material application, spider habitat reduction and at times alterations of the structure and/or landscape. However, it is important to understand that some level of Brown Recluse infestation will be present at all times during the life of the service whether or not the occupant sees them.

Customer Signature

Date