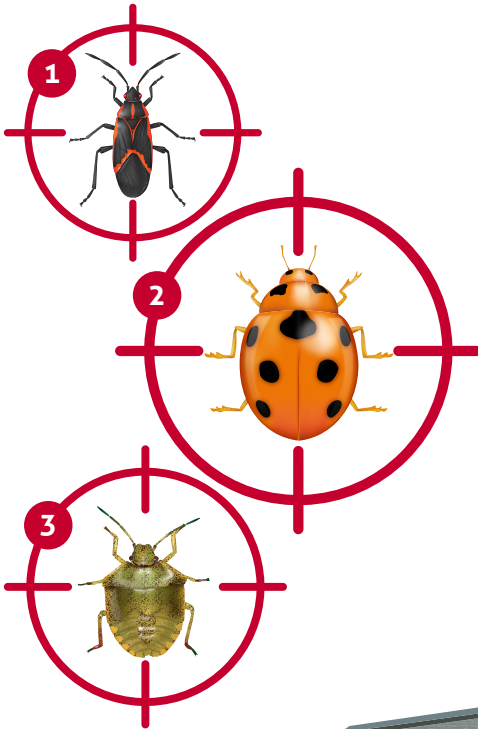


FALL PESTS



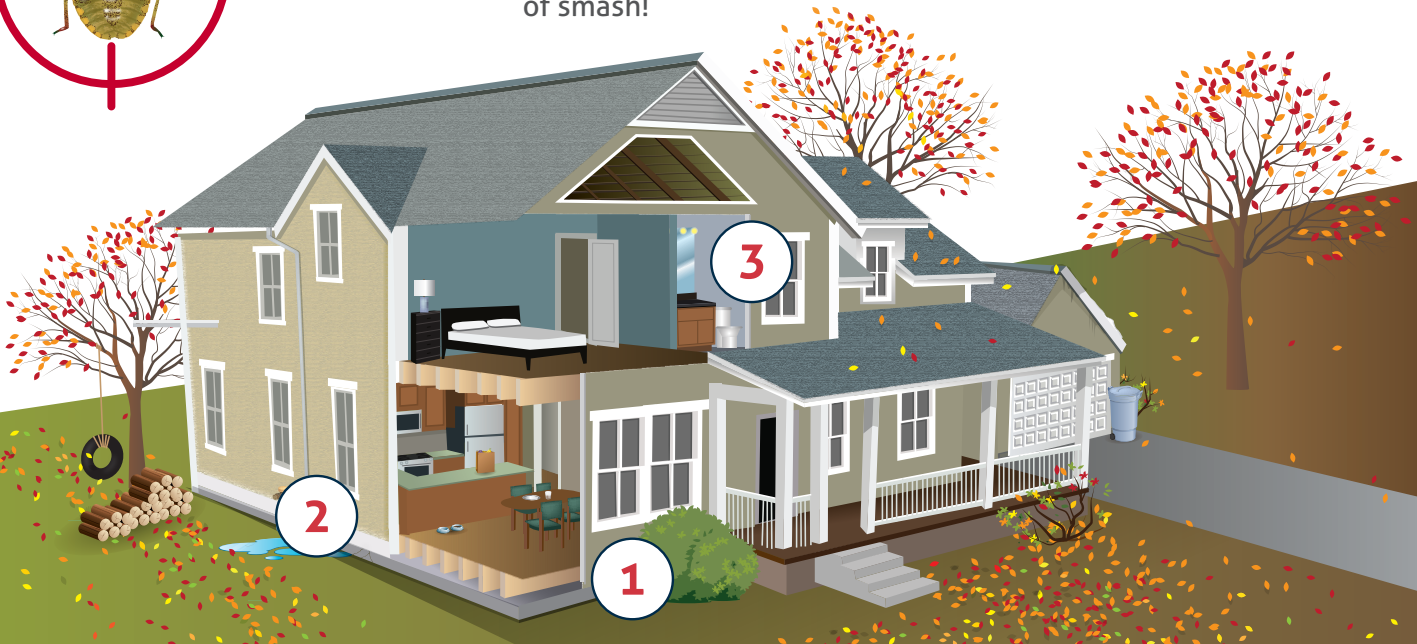
Thank you for trusting All American to handle your pest control needs. **We appreciate your business!** To ensure you get the best results possible from our service the following information is provided.

BOXELDER BUGS, ASIAN LADY BEETLES AND STINK BUGS



Who are these guys? These are fall pest that can show up in huge numbers at your home. Mostly on the outside, but, occasionally you will find them in large numbers inside. You can quickly identify them by checking for these characteristics.

1. **Box Elder Bugs** – You are most likely seeing the adults. They are black in color and have a distinct red line that extends down the center of their backs and along the edge of their wings.
2. **Asian Lady Beetles (Halloween Beetles)** – Usually appear in October, sometimes around Halloween, thus the name. They are more light orange in color with black dots.
3. **Stink Bugs** – These guys are light gray in color and if you look close, their body resemble the shape of a shield. Rumor has it, if you smash one...it stinks, really bad! Might want to flush instead of smash!



FALL PESTS

PROACTIVE STEPS TO HELP REDUCE THE POPULATION...



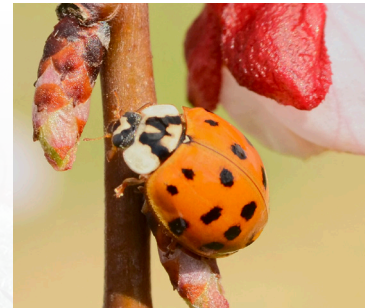
1. These fall pests are a nuisance but are generally harmless. We can help you manage these pests by sharing recommendations and by providing pest control services to help "reduce" the number of pests you encounter. Total elimination is not likely.



2. For "immediate" relief from these fall pests inside your home, we recommend you "vacuum or sweep" to remove them. Dispose of contained pest by tightly sealing in a bag and putting in the trash. Don't release them outside. They may find their way back in. This technique can also be used outside on decks, porches, walkways, and sides of the home to reduce the population. We recommended the use of a shop-vacuum as these pests can leave a lingering odor in your central vacuum or portable in-home vacuum system.



3. Typically, these fall pests are looking for a place to over winter. You may want to implement the following suggestions:
 - ★ Look for possible entry points for pests to get inside. Sealing around windows, door openings, cracks and crevices will help to eliminate access to the inside of your home.
 - ★ Remove leaf debris from around the perimeter of your home. These fall pests love to overwinter in this debris. Removing it will help to reduce populations now and in the spring.



Taking proactive steps will go a long way in reducing the population of these fall pests!

Customer Signature

Date