



MORTAR BREAK®

Mortar Deflection System

Specification Bulletin
No. 310-350
Mortar Break®
Mortar Break® II

Mortar Break® | Mortar Deflection System

DESCRIPTION

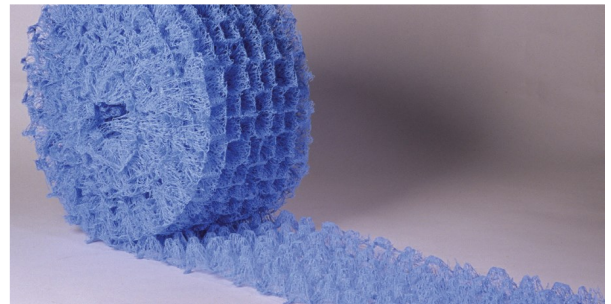
The Mortar Break® mortar deflection is a blue entangled matrix that works in conjunction with masonry flashing and weep vents as a complete and effective moisture management system. Mortar Break® is designed to prevent mortar droppings from blocking and clogging head joint drainage channels for masonry cavity wall applications. Mortar Break® suspends excess mortar droppings above the weep holes and allows moisture within the cavity to drain down the flashing and out of the wall. The system also helps to maintain an airspace for ventilation and drying of the wall cavity.

APPLICATIONS

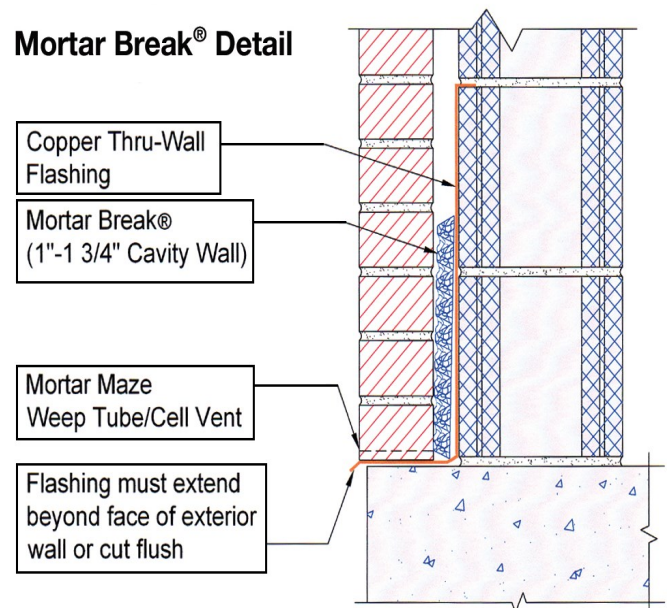
- For all cavity wall flashing locations including the base of the wall, above windows and doors, steel lintels, spandrels and shelf angles, or at any other penetrations or obstructions.
- Mortar Break® should be used with masonry through-wall flashing and Mortar Maze® Weep Vents from Advanced Building Products to provide a complete masonry moisture management system.

BENEFITS

- Polypropylene matrix deflects and suspends mortar droppings allowing moisture to drain from the wall assembly.
- Dimple design helps break up mortar droppings.
- Anti-wicking material promotes enhanced drainage performance.
- Lightweight & easy to install. No mechanical fastening required.
- Able to withstand extreme temperatures.
- 90% open mesh allows for proper drainage and air movement.



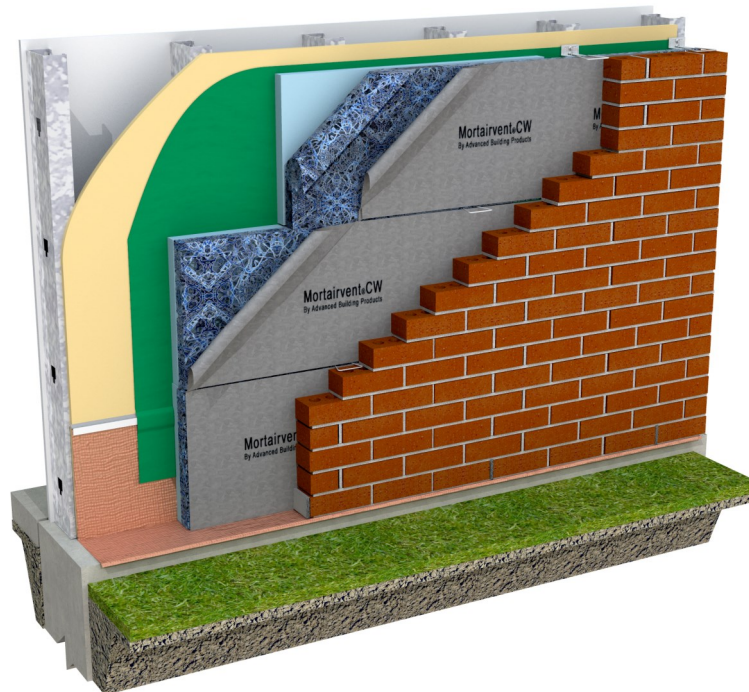
Mortar Break® Detail



PHYSICAL DATA	Mortar Break® 310	Mortar Break® 313	Mortar Break® 316	Mortar Break® 339	Mortar Break® II
Core Material	Polypropylene	Polypropylene	Polypropylene	Polypropylene	Polypropylene
Thickness	0.80 in. (20.32 mm)	0.80 in. (20.32 mm)	0.80 in. (20.32mm)	0.80 in. (20.32 mm)	1.60 in. (40.64 mm)
Roll Weight	4.50 lbs. (2.04 kg)	5.86 lbs. (2.66 kg)	7.22 lbs. (3.27 kg)	17.60 lbs. (7.98 kg)	4.0 lbs. (1.81 kg)
Length	50 ft. (15.24 m)	50 ft. (15.24 m)	50 ft. (15.24 m)	50 ft. (15.24 m)	35 ft. (10.67 m)
Width	10 in. (25.40 cm)	13 in. (33.02 cm)	16 in. (40.64 cm)	39 in. (99.06 cm)	10 in. (25.40 cm)
Rolls/Box	4	3	2	1	4
Boxes/Pallet	8	8	8	8	8
UV Exposure	30 days	30 days	30 days	30 days	30 days

For an all-wall mortar deflection, consider:

 **MORTAIRVENT® CW**
Masonry Cavity Wall Drainage and Ventilation



ADVANCED BUILDING PRODUCTS, INC.
Phone: 800-252-2306 Fax: 207-490-2998
info@abp-1.com
www.advancedbuildingproducts.com
www.mortarbreak.com

