



R-VENT®

Roof Ventilation Mat

Specification Bulletin
No. 600
R-Vent®

R-Vent® | Roof Ventilation Mat

DESCRIPTION

R-Vent® is a roof ventilation mat designed for use with standing seam metal roofing. R-Vent® is used to create an airspace to promote air flow in all directions between the underside of the metal roofing material and the roofing deck.

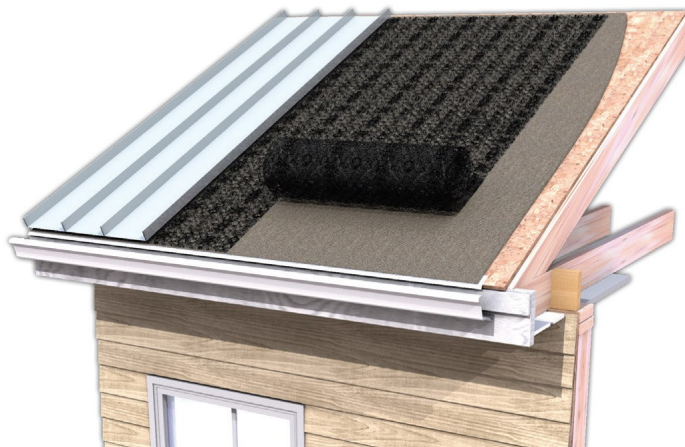
Using a thin nylon matrix profile, R-Vent® prolongs the life of the roof structure and membrane by reducing the adverse effects associated with moisture damage including mold, mildew, corrosion or deterioration of the roofing material itself. R-Vent® is extremely flexible and conforms to any contoured surface or roofing material (cedar, metal, tile, etc.) and is perfect for residential and commercial roof applications.

BENEFITS

- * Gives backup protection from water infiltration.
- * Creates an open structure for heat reduction and ventilation.
- * Prolongs the life of the roofing membrane and roof structure.
- * Reduces sound transmission caused by rain, hail, wind, environmental sounds (i.e. airplanes).
- * Lightweight and easy for installers to handle.
- * Bends and conforms to any type of contoured roof.
- * Maintains a thermal break between roofing & sheathing.

INSTALLATION INSTRUCTIONS

- * Install plywood roof sheathing onto rafters. Install roofing felt or ice dam protection membrane over sheathing. Check local codes and manufacturer's recommendations for specific requirements.
- * Install R-Vent® over roofing felt, ice protection membrane, and metal edge flashing or drip edge. Ensure R-Vent® material is installed flush against edge of the flashing or drip edge. Carefully trim the R-Vent® material at all penetrations with a utility knife or scissors.
- * When installing metal or alternate material shingles, unroll R-Vent® horizontally just ahead of the shingles as they are installed. Tack or nail R-Vent® in place every three square feet. Do not overlap the R-Vent® material. Butt each course tightly against the previous course and at vertical seams.
- * When installing vertical metal roofing panels, unroll R-Vent® vertically from ridge to eave just ahead of the metal panels as they are installed. Tack or nail R-Vent® in place every three square feet. Do not overlap the R-Vent® material. Butt each course tightly against the previous course and at vertical seams.
- * At ridge locations, extend R-Vent® material over the ridge and butt against the material on the opposite side of the roof. If a ridge vent is utilized, follow the ridge vent manufacturer's recommendations for underlayment material installation.
- * Apply roofing materials using manufacturer's recommended fasteners and instructions, allowing for the additional thickness of the R-Vent® material.



ADVANCED BUILDING PRODUCTS, INC.

Phone: 800-252-2306 Fax: 207-490-2998

info@abp-1.com www.advancedbuildingproducts.com

PHYSICAL DATA		R-Vent®
Core Material	Nylon 6	
Thickness	0.361 in. (9.16 mm)	
Roll Weight	12.0 lbs. (5.44 kg)	
Length	61.5 ft. (18.75 m)	
Width	39.0 in. (99.06 cm)	
Coverage Area	200 sq. ft. (18.58 sq. m)	
Rolls per Pallet	18	

TECHNICAL DATA		
Mass / Unit Area	ASTM D 5261	8.66 oz / sq. yd.
Tensile Strength	ASTM 5035 mod.	MD 100.0 lbs. / sq. ft.
		TD 68.8 lbs. / sq. ft.
Elongation	ASTM 5035 mod.	MD 60%
		TD 53%

MD = Machine Direction / TD = Transverse Direction

For a complete AIA accredited presentation on the benefits of entangled net technology in metal roof construction, please click on the QR Code below.



ADVANCED BUILDING PRODUCTS, INC.
 Phone: 800-252-2306 Fax: 207-490-2998
 info@abp-1.com
 www.advancedbuildingproducts.com

