

learn a living

FOSTER CTE CENTER

SSSSSSSSSS

Our Apprenticeship Navigator and Cooperative Education Instructor have been supporting students as they work towards their Maine Career Exploration Badge. 33 students have completed a 40 hour workforce experience and have earned a \$500 check directly from JMG. Our goal is 50 students by the end of the school year.

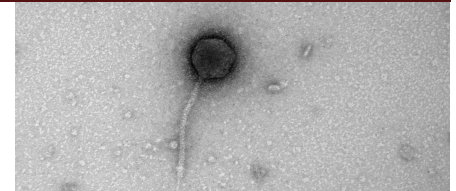
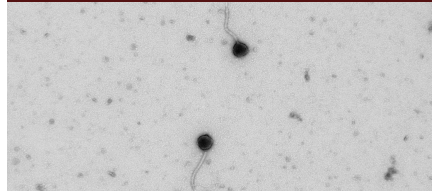


THE GOOD STUFF

- 405 ACCEPTED FULL PROGRAM STUDENTS... AND COUNTING
- \$16,500 IN MAINE CAREER EXPLORATION BADGES EARNED BY STUDENTS...AND COUNTING
- 32 NATIONAL TECHNICAL HONOR SOCIETY INDUCTEES FOR 2024
- BUSINESS ACADEMY STUDENTS & FBLA BRING HOME MULTIPLE AWARDS FROM THE STATE LEADERSHIP CONFERENCE
- ALL EMPLOYABILITY SKILLS STUDENTS PASSED THEIR SERVSAFE CERTIFICATION
- 50% OF ALL STUDENTS, 9-12 APPLIED FOR A CTE PROGRAM
- OUR 7TH PLUMBING STUDENT PASSED AND RECEIVED THEIR JIT LICENSE
- DIGITAL MEDIA STUDENTS ARE COLLABORATING WITH THE WESTERN MAINE EDUCATION CONSORTIUM TO CREATE A VIDEO CELEBRATING 20YRS OF SERVICE.

A closer look at a Virus

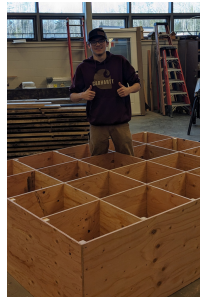
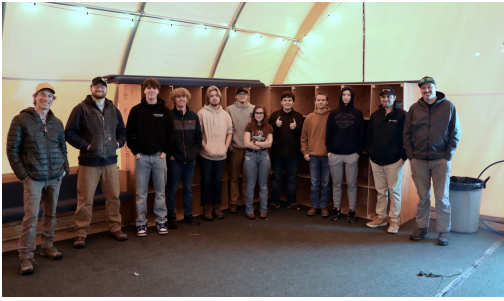
Biotechnology students discovered a virus that attacks bacteria in Clearwater Pond. They have purified a strain of the virus and isolated high concentration high purity DNA from the virus. They have found 3 restriction enzymes that are able to cut the virus DNA so that the fragments can be genetically engineered into a Phage DNA Library that can be read by a DNA sequencer. We are waiting on results to see if the library has been successfully created. Meanwhile a picture of the virus was taken by Anja Nordstrom a Mt. Blue alum who works with electron microscopes at Harvard Medical School in Boston.



BENCHED

Our Career Exploration students crafted reading benches and delivered them to RSU 9 elementary libraries. During delivery the Career Exploration students spoke to the elementary students about CTE and how the benches were made.





Community Cubbies

Building Construction and Composites Manufacturing worked in tandem to design and build 5 sets of storage cubbies for Titcomb Mtn. Ski slope.



The cubbies are located in the quonset hut and are accessible to racers and recreational skier/boarders. They will provide storage during races and provide some organization in the racers lodge. Materials were donated by Pleasant River Lumber Co.

Critical Bends

Students from our Electrical Technology and Plumbing/HVAC programs learned the method of cutting and bending EMT from our community partner, Sean Cavanaugh of IEC Inc. Sean shared his expertise as a Master Electrician and demonstrated the nuances of conduit bending. As our Electrical Technology students prepare to undergo their lab experience, with several community electrical contractors, they will continue to learn similar skills. Thanks again to IEC, who provided the EMT conduit materials for student practice.



Ice, Ice, Baby...



After a unit of study on Maine Fish ID, Cold Water Immersion, Ice Safety, and Fishing Knots, the Outdoor Leadership Program hit the hard water. Special thanks to Backwoods Bait and Tackle for shiners.

