

FOSTER CTE CENTER

DECEMBER, 2022

THE GOOD STUFF

- BASE PLATFORM ON THE OUTDOOR LEADERSHIP YURT HAS BEGUN CONSTRUCTION
- 50% OF OUR PROGRAMS HAVE PARTICIPATED IN CAREER RELATED FIELD TRIPS
- BUILDING CONSTRUCTION HAS COMPLETED FRAMING ON THE NEW FCTEC STORAGE BUILDING
- SOCIAL MEDIA PRESENCE ON INSTAGRAM HAS INCREASED 34% SINCE SEPTEMBER
- CULINARY ARTS HOSTED THE FRANKLIN COUNTY RETIRED TEACHERS ASSOCIATION
- FCTEC STUDENT AMBASSADORS ATTENDED THE HYDE SCHOOL YOUTH LEADERSHIP CONFERENCE
- ALL FCTEC STUDENTS PARTICIPATED IN OUR CAMPUS WIDE CAREER FAIR
- FCTEC CAREER EXPLORATION HAS OPENED ITS "POP UP SHOP"
- FCTEC IS MODIFYING A PERMANENT SHOP AT DAY MT. MS AND PROVIDING CTE INSTRUCTION
- FORESTRY FRIDAY'S AT MBMS ARE BACK!
- YEAR 2 OF TRUNK OR TREAT SERVED AREA CHILDREN WITH A SAFE HALLOWEEN EXPERIENCE



GIVING BACK

Our Exploratory Class built a set of corn hole boards designed with a firefighters appreciation flag. The Boards were donated to the Farmington Fire Department. The class has been discussing the importance of community involvement

Message from Melissa Williams

FCTEC has been bustling and booming this fall! We have many activities, much assessment, and training happening in every corner of the Campus as well as outside the walls. We have many moving parts one being our state requirement to administer 3rd party pre and post assessments to our students. Because all of our programs require program specific assessments, it takes a lot of coordination of the purchasing and the administering of the exams. We use these assessments to inform student learning and to inform curricular needs/changes, as well as informing us as to what is needed to provide up-to-date training. In addition, many students have been working on certifications in CPR/First Aid, ServSafe, SP/2, Hunter's Safety, Firearms Safety. These certifications meet the industry standards and allow students more opportunities in the field. The standards are not only approved by the MDOE, but are also reviewed annually during our Program Advisory Committees to ensure that we are meeting current industry demands. Our PACs met in November and will meet again in the Spring. Instructors and business and industry partners meet/consult informally often- some on a daily basis. Our instructors rely on these partners to let them know what is most relevant to teach for our locales, the state, and beyond our borders.

OUTDOOR EDUCATION/LEADERSHIP



Our new Outdoor Leadership program is off and tying, paddling and exploring. The program prepares individuals to work as educators, instructors, or facilitators in parks, recreational facilities, camps, and other outdoor settings. Instruction will include leadership skills, wilderness survival skills, and first aid, as well as instruction in recreational activities.



The program is in the midst of constructing a Yurt that will be used as an outdoor classroom and a base of operation for outdoor activities.



CHECK US OUT ON INSTAGRAM

BUILDING CONSTRUCTION



BUILDING CONSTRUCTION/METAL FABRICATION/PRE ENGINEERING/CADD

The storage building is finally under construction! We started planning and writing grants for this project 3 years ago. As has been mentioned, our storage needs are great. With the programs we offer comes large equipment and many supplies! This building will be used by several programs which will allow some supplies and equipment to be off the shop floors and under cover. The project has involved several programs and many instructors and students. Having a live project on site is a huge advantage for many reasons. Please feel free to drive around the backside of the Campus and take a peek at the great work our Building Construction students are currently doing on this building.

FCTEC and the Day Mt. Middle School are working together to bring CTE to students who previously didn't have the opportunity. We are offering weekly instruction in many of our program areas, including Commercial Arts, Culinary Arts, Building Construction, Pre-Engineering, Automotives and Digital Media. Day Mt has dedicated a space that is currently being modified as a CTE shop.

MIDDLE SCHOOL CTE



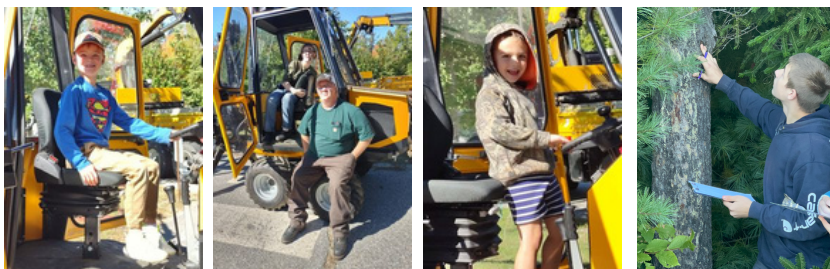
YURTS SO GOOD

Our Pre-Engineering, Outdoor Leadership, Building Construction & Career Exploration Programs have been working together to map out and construct the support foundation for our new yurt. Students have been involved in the process from the placement of supports to the installation of the floor. Next steps will lead to the installation of the canopy.



K-8 CONNECTIONS

Our continued mission reaches beyond our full time CTE students. We work to connect with all students from K-12 throughout our catchment area. This fall Cape Cod Hill School hosted a Touch-A-Truck day allowing elementary students the opportunity to see and learn about heavy machinery. Our Forestry program was there presenting their Mini Forwarder. Additionally, we have begun year 2 of "Forestry Friday's" where MBMS students have an opportunity to experience Forestry from CTE perspective. We are looking to add additional programs to this Friday opportunity.



"TEACHERS OPEN THE DOOR, BUT YOU MUST ENTER BY YOURSELF. DON'T BE AFRAID TO EXPLORE."