

# Mt.Blue Middle School Career and Technology Education (CTE) Proposed Expansion

## Donation Details

Mr. Bjorn and his foundation see a critical need in our community to give young people greater opportunities to engage their hearts, minds, and hands in learning. They are willing to entertain supporting this need through a building expansion at Mt. Blue Middle School (MBMS). RSU 9 is excited to partner with the Bjorn Foundation and make this dream a reality.

This donation comes at an ideal time as feedback from our Strategic Planning shows a strong need to increase offerings to students that focus on real-life skills, workforce readiness, and hands-on learning. This donation will also allow us to build on our current exploratory programs at MBMS allowing students to learn crucial workforce readiness skills.

---

## Proposed Building and Costs

- 5,000 square foot learning space for all Mt. Blue Middle School Students.
- Three large learning spaces for hands-on learning with one shared classroom for group instruction
- All construction costs covered by a generous donation from the Bjorn Foundation (2.5 million)

## Proposed Programming Options

Potential programming options include:

- Architecture, Construction, and Manufacturing
- Medical and Public Safety
- Audio and Visual Technology and Communication
- Hospitality and Tourism

---

## Strategic Planning Alignment

CTE Middle School Programming is one of the Action Steps which supports many of our Strategic Planning Goals.

## Staffing

One new professional staffing position salary and benefits increase (up to three teachers will be needed) with two present MBMS teaching positions adjusted or integrated into the new program

---

## Potential Budget Increase

Item	Estimated Annual Cost
Utility Services, Repair/Maintenance, Disposal	\$2,690.31
Electricity, Propane, Oil	\$8,378.97
Insurance and Purchased Services	\$10,512.90
Supplies and Communication	\$1,956.46
CTE Teacher (salaries and benefits)	\$62,808.28
Total	\$86,346.92

## Next Steps

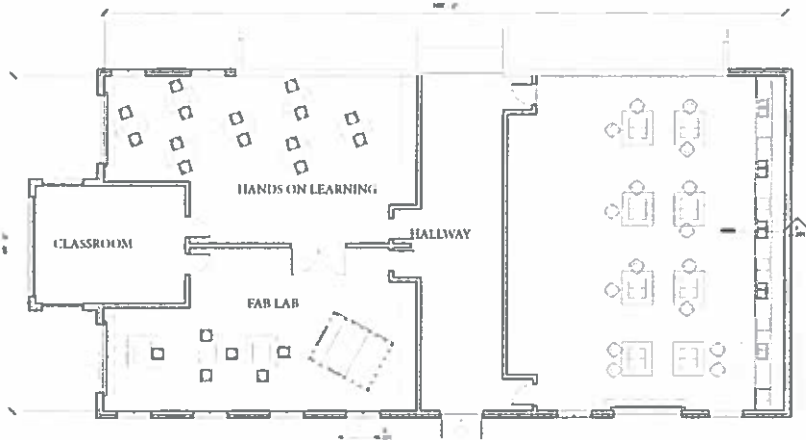
- Approval by Voters: Tuesday, November 8, 2022 by referendum (we hope)
- Architect Design Submission: Tuesday, December 20th, 2022
- Design Final Review: Tuesday, January 18th, 2023
- Documents Available for Bidders: Friday, January 27th, 2023
- Bid Opening: Friday, February 24th, 2023
- Notice to Proceed: Friday, March 3, 2023
- Ceremonial Groundbreaking: April 14th, 2023

---

*Please vote in your town referendums to let us know if you want us to proceed with this opportunity. 10/26/22*

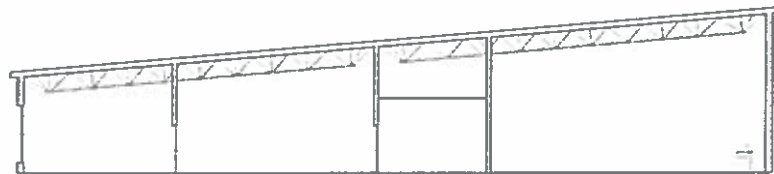
# Mt. Blue Middle School CTE Expansion

The three large learning spaces will be multi use areas for hands on learning opportunities.



FLOOR PLAN

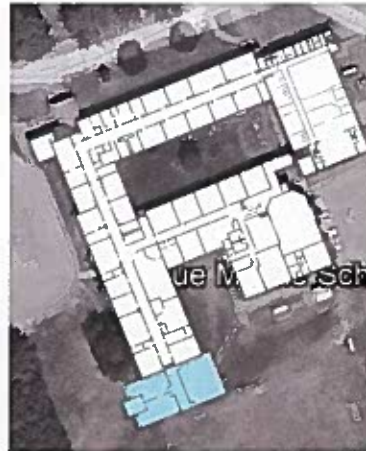
Current school utilities are able to support the expansion with minor upgrades.



SOUTH ELEVATION



BUILDING SECTION



SITE LOCATION

Programming will be performed by adjusting current MBMS staff members schedules along with the addition of another through the local budget.



EXTERIOR VIEW